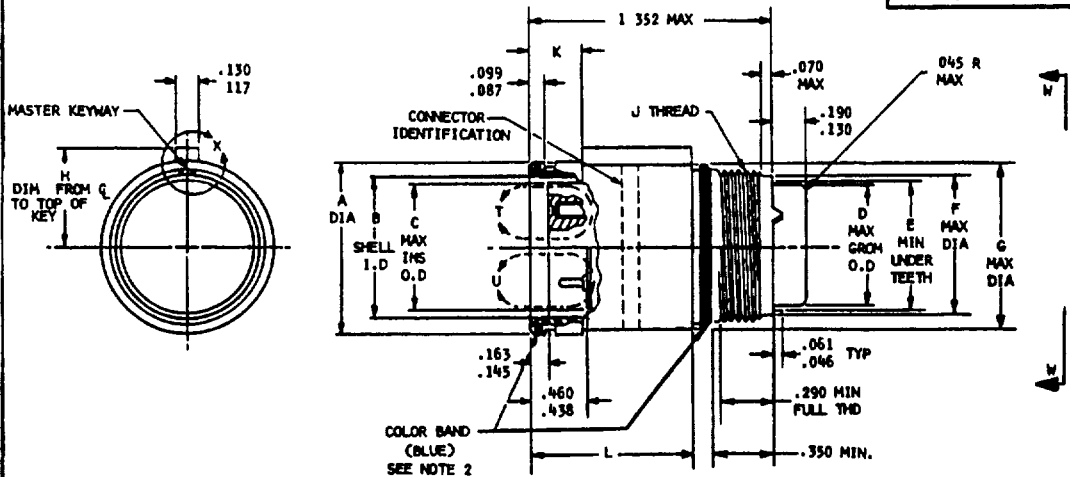
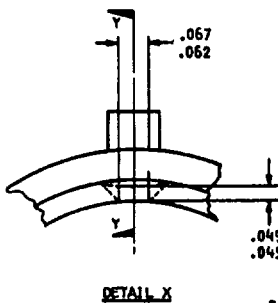
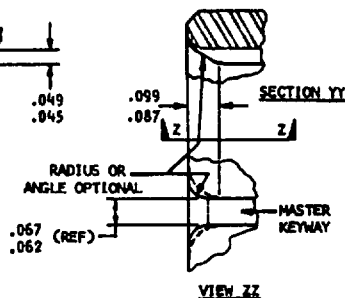
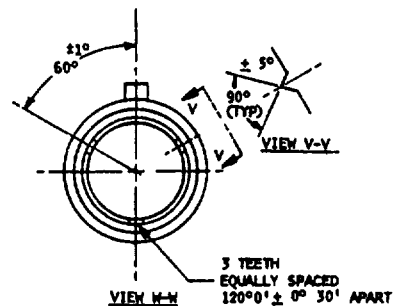


FED SUP CLASS
5935FIGURE 1
CONNECTOR VIEW

DETAIL X



VIEW ZZ

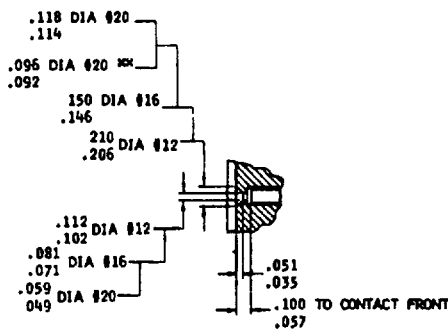


VIEW V-V

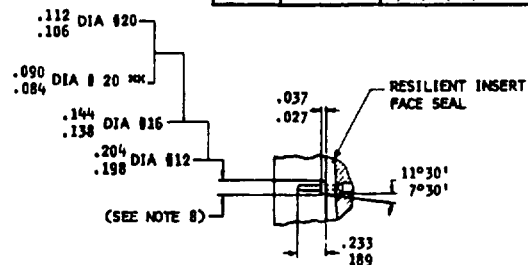
INSERT ARRANGEMENTS REQUIRING REDUCED DIAMETERS FOR SOCKET CONTACT CHAMFER LEAD-INS AND PIN CONTACT RAISED SEAL BARRIERS.

SHELL SIZE	INSERT ARRANGEMENTS	CONTACT CAVITIES
12	12-50	5, 6, 8, 9, 11 AND 12

NON OUTER ROW CONTACTS OF INSERT ARRANGEMENTS INDICATED IN CHART



DETAIL Y



DETAIL U

P A NAVY-AS Other Cust	International interest	TITLE CONNECTOR, PLUG, ELECTRIC, CRIMP TYPE, RACK AND PANEL, SERIES 3 (CLASS L AND E)	MILITARY STANDARD
			MS 3446(NAVY)
Procurement Specification MIL-C-81703		SUPERSEDES	SHEET 1 OF 3

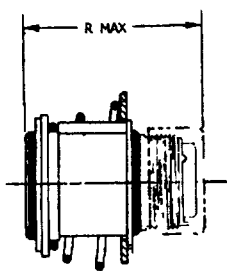
DD FORM 10 APR 64 672

PREVIOUS EDITIONS OF THIS FORM ARE OBSOLETE

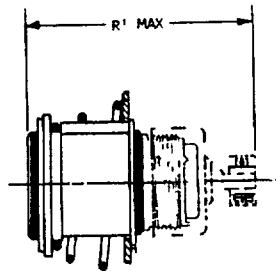
5935-N668-6

(Limited Coordination)

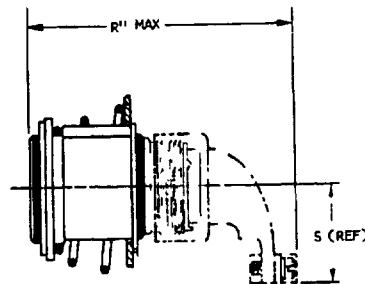
APPROVED 21 July 1971 REVISED

FED SUP CLASS
5935

ASSEMBLED TO STRAIGHT BACKSHELL
LESS STRAIN RELIEF
(SEE NOTE 3)

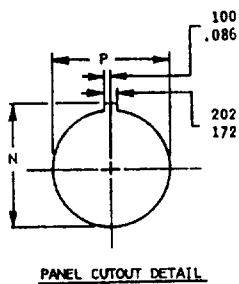


ASSEMBLED TO STRAIGHT BACKSHELL
WITH STRAIN RELIEF
(SEE NOTE 3)

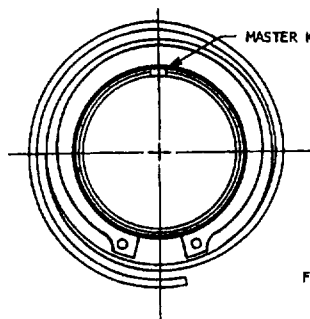


ASSEMBLED TO 90° BACKSHELL
WITH STRAIN RELIEF
(SEE NOTE 3)

FIGURE II
BACKSHELL ACCESSORIES



PANEL CUTOUT DETAIL



CONNECTOR TRAVEL = 531
469
MINUS PANEL THICKNESS

MASTER KEYWAY

FRONT SNAP RING
SEE MS 3445
TABLE III

BACKING WASHER
MS 3445 L

REAR SNAP RING
SEE MS 3145
TABLE III

SPRING
MS 3445

FIGURE III
CONNECTOR ASSEMBLY
VIEW

PART NUMBER EXAMPLE MS 3446 E 19-50 S Y

MS NUMBER
CLASS
SHELL SIZE
INSERT
ARRANGEMENT

ALTERNATE
INSERT
POSITION
CONTACT
STYLE

APPROVED 21 July 1971 REVISED

P A NAVY-AS Other Cust	International Interest	TITLE CONNECTOR, PLUG, ELECTRIC, CRIMP TYPE, RACK AND PANEL, SERIES 3 (CLASS L AND E)	MILITARY STANDARD
			MS 3446(NAVY)
Procurement Specification MIL-C-81703		SUPERSEDES:	SHEET 2

DD FORM 672
10 APR 64

PREVIOUS EDITIONS OF THIS FORM ARE OBSOLETE

(Limited Coordination)

FED SUP CLASS
5935

TABLE 1
CONNECTOR & PANEL
CUTOUT DIMENSIONS AND WEIGHTS

SHELL SIZE	A	B	C	D	E	F	G	H	J THREAD
3	641/ 628	454/ .446	330	351	441	509	615	442/ 422	9/16-24 UNEF-2A
7	797/ 784	589/ 581	451	531	613	687	760	504/ 484	3/4-20 UNEF-2A
12	920/ 907	723/ .715	553	.665	731	812	867	567/ 547	7/8-20 UNEF-2A
19	1 048/1 035	862/ .854	738	790	861	937	1 010	.639/ 619	1-20 UNEF-2A
27	1 189/1 176	1.017/1 009	854	869	919	992	1 150	709/ 689	1 1/16-18 UNEF-2A
37	1 356/1 343	1.139/1 131	978	994	1 044	1 117	1 322	796/ 776	1 3/16-18 UNEF-2A
61	1 673/1 660	1 427/1 419	1 271	1 280	1 361	1 427	1 635	951/ 931	1 1/2-18 UNEF-2A

SHELL SIZE	K	L	N	P	R	R'	R''	S
3	283/ 253	824/ 804	858/ 828	686/ .656	1 660	2 010	2 218	850
7	332/ 302	817/ 797	999/ 969	.827/ .797	1 660	2 010	2 420	950
12	337/ 307	817/797	1.124/1.094	.968/ .938	1 660	2 240	2 510	1 010
19	335/ 305	817/797	1 249/1 219	1.077/1.047	1 660	2 240	2 640	1 070
27	334/ 304	805/ 785	1 390/1 360	1.218/1.188	1 660	2 240	2 740	1 130
37	343/ 313	805/ 785	1 546/1 516	1.390/1 360	1 660	2 240	2 870	1 190
61	382/ 352	.793/ 773	1 874/1.844	1 702/1 672	1.660	2,240	3 132	1 335

SHELL SIZE	WEIGHT MAX (LBS)	
	PIN INSERT	SOC INSERT
3		
7		
12	WEIGHTS WILL BE SUPPLIED IN LATER REVISION	
19		
27		
37		
61		

1 WEIGHT LISTED IS FOR CONNECTOR WITH SNAP RINGS, BACKING WASHER SPRING
AND MAX DENSITY INSERT ARRANGEMENT LESS CONTACTS AND BACKSHELL ACCESSORIES

- 1 THE COMPLETE REQUIREMENTS FOR PROCURING THE CONNECTOR DESCRIBED
HEREIN SHALL CONSIST OF THIS DOCUMENT AND THE ISSUE IN EFFECT OF MIL-C-81703
- 2 COLOR BAND .100 WIDE MAX BAND LOCATION MUST BE SUCH THAT IS IS VISIBLE WHEN
THE CONNECTOR IS MOUNTED
- 3 CONNECTOR ASSEMBLY MUST INCLUDE A BACKSHELL TO MEET THE MOISTURE SEALING REQUIREMENTS OF THE PROCUREMENT
DOCUMENT SEE MS 3416 , MS 3417 AND MS 3418 FOR APPLICABLE BACKSHELL ACCESSORIES
- 4 MATERIALS SHELLS ALUM ALLOY QQ-A-591 COMP 13, 218, 380 OR 384
- 5 THE FINISH ON THE SHELL SHALL BE ELECTROLESS NICKEL
- 6 FOR MATING INFORMATION REFER TO MS3445 SHEET 5
- 7 DIMENSIONS IN INCHES UNLESS OTHERWISE SPECIFIED TOLERANCES SHALL BE
XX' =± .01 AND .XXX =±.005, ANGULAR, X°=±1°0' AND X°X' =±30'
- 8 DIAMETERS SHOWN ARE AT BASE OF BARRIERS

APPROVED 21 July 1971 REVISED

P A NAVY-AS Other Cust	International Interest	TITLE CONNECTOR, PLUG, ELECTRIC, CRIMP TYPE, RACK AND PANEL, SERIES 3 (CLASS L AND E)	MILITARY STANDARD
			MS 3446(NAVY)
Procurement Specification MIL-C-81703		SUPERSEDES:	SHEET 3

DD FORM 672
10 APR 64

PREVIOUS EDITIONS OF THIS FORM ARE OBSOLETE

(Limited Coordination)