

INCH-POUND

MS3443C  
 14 January 2011  
 SUPERSEDING  
 MS3443B  
 1 March 2007

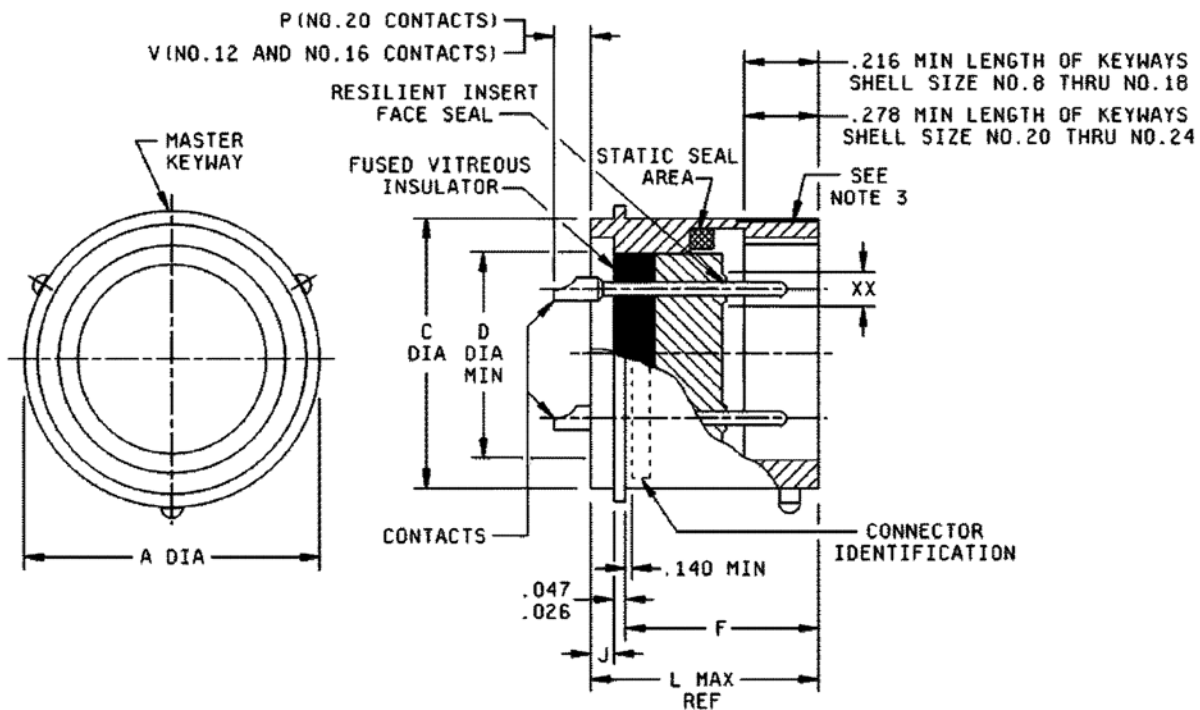
## DETAIL SPECIFICATION SHEET

CONNECTORS, RECEPTACLE, ELECTRICAL, SOLDER OR WELDED FLANGE MOUNT,  
 BAYONET COUPLING, SOLDER PIN CONTACT, CLASS H, SERIES 2

Inactive for new design after 15 December 1998.

This specification is approved for use by all Departments and  
 Agencies of the Department of Defense.

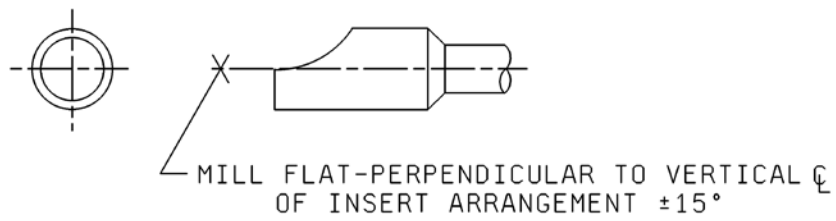
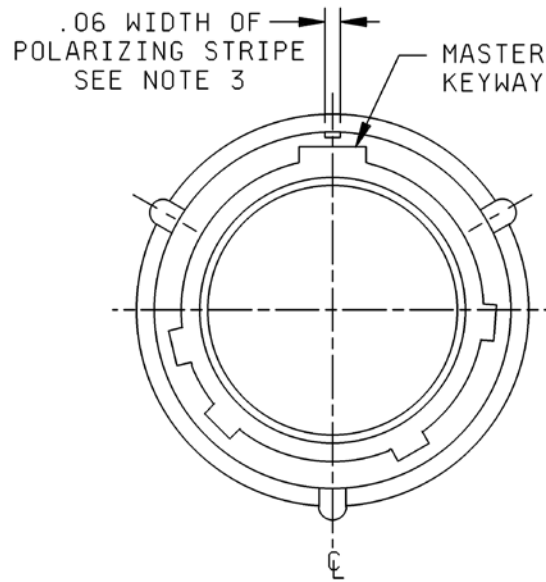
The requirements for acquiring the product described herein  
 shall consist of this specification sheet and MIL-DTL-26482.



NOTE: For "XX", see note 4 and table I for contact cavities requiring reduced dimensions.

FIGURE 1. Receptacle, class H, dimensions and configurations.

MS3443C

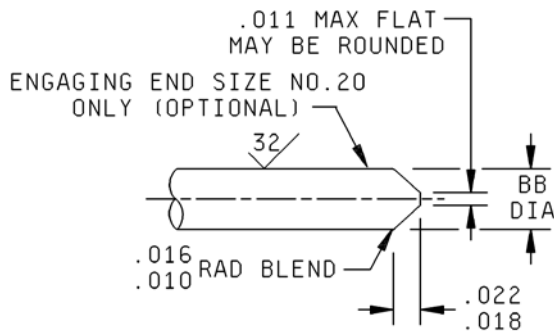
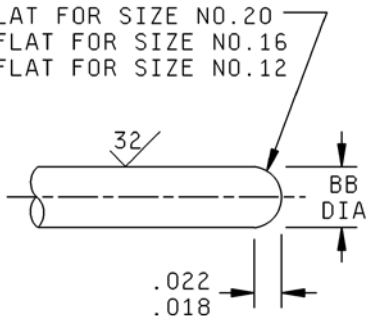


SOLDER POT ORIENTATION

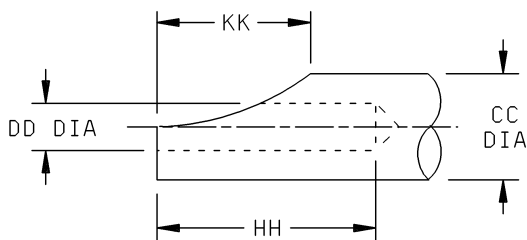
FIGURE 1. Receptacle, class H, dimensions and configurations - Continued.

MS3443C

ENGAGING END APPROXIMATELY  
SPHERICAL WITH  
.011 MAX FLAT FOR SIZE NO.20  
.020 ±.005 FLAT FOR SIZE NO.16  
.057 ±.005 FLAT FOR SIZE NO.12

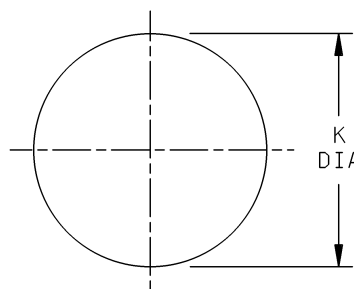


ENGAGING END OF CONTACT



TERMINATION END OF CONTACTS

SOLDER POT



PANEL CUTOUT

Contact size	BB	CC	DD	HH	KK
20	.041 (1.04)	.088 (2.24)	.048 (1.22)	.188 (4.78)	.110 (2.79)
	.039 (0.99)	.061 (1.55)	.042 (1.07)	.109 (2.77)	.068 (1.73)
16	.0635 (1.61)	.116 (2.95)	.075 (1.91)	.251 (6.38)	.141 (3.58)
	.0615 (1.56)	.096 (2.44)	.069 (1.75)	.172 (4.37)	.109 (2.77)
12	.095 (2.41)	.150 (3.81)	.122 (3.10)	.251 (6.38)	.141 (3.58)
	.093 (2.36)	.130 (3.30)	.112 (2.84)	.172 (4.37)	.109 (2.77)

FIGURE 1. Receptacle, class H, dimensions and configurations - Continued.

## MS3443C

Shell size	A	C	D dia (min ID)	F
8	.635 (16.13)	.563 (14.30)	.361 (9.17)	.598 (15.19) .578 (14.68)
	.615 (15.62)	.557 (14.15)		
10	.760 (19.30)	.673 (17.09)	.489 (12.42)	
	.740 (18.80)	.667 (16.94)		
12	.854 (21.69)	.782 (19.86)	.606 (15.39)	
	.834 (21.18)	.776 (19.71)		
14	.979 (24.87)	.907 (23.04)	.731 (18.57)	
	.959 (24.36)	.901 (22.89)		
16	1.104 (28.04)	1.032 (26.21)	.856 (21.74)	
	1.084 (27.53)	1.026 (26.06)		
18	1.228 (31.19)	1.157 (29.39)	.961 (24.41)	
	1.208 (30.68)	1.151 (29.24)		
20	1.322 (33.58)	1.251 (31.78)	1.086 (27.58)	.660 (16.76) .640 (16.26)
	1.302 (33.07)	1.245 (31.62)		
22	1.448 (36.78)	1.376 (34.95)	1.211 (30.76)	
	1.428 (36.27)	1.370 (34.80)		
24	1.574 (39.98)	1.501 (38.13)	1.336 (33.93)	
	1.554 (39.47)	1.495 (37.97)		

Shell size	J	K	L	P	V	Max weight lbs (grams)
8	.156 (3.96) .116 (2.95)	.570 (14.48)	.801 (20.35)	.178 (4.52) .118 (3.00)	.248 (6.30) .188 (4.78)	.0310 (14.06)
10		.680 (17.27)				.0340 (15.42)
12		.789 (20.04)				.0400 (18.14)
14		.914 (23.22)				.0510 (23.13)
16		1.039 (26.39)				.0620 (28.12)
18		1.164 (29.57)				.0820 (37.19)
20		1.258 (31.95)				.863 (21.92)
22	.188 (4.78)	1.383 (35.13)	.895 (22.73)	.146 (3.71) .086 (2.18)	.216 (5.49) .156 (3.96)	.1150 (52.25)
24	.148 (3.76)	1.508 (38.30)				.2680 (121.56)

FIGURE 1. Receptacle, class H, dimensions and configurations - Continued.

## MS3443C

Inches	mm
.005	0.13
.010	0.25
.011	0.28
.016	0.41
.020	0.51
.022	0.56
.026	0.66
.047	1.19
.057	1.45
.060	1.50
.088	2.24
.140	3.56
.216	5.49
.278	7.06

## NOTES:

1. Dimensions are in inches. Metric equivalents are given for information only.
2. Dimensional tolerances are  $.XX \pm .01$  inches (0.25 mm) and  $.XXX \pm .005$  inches (0.13 mm). Angular tolerances are  $X^\circ \pm 1^\circ$ .
3. Polarizing stripes, color optional.
4. Insert arrangements requiring reduced diameters for raised seal barrier on outer row of contact cavities as indicated.
5. True position (TP) tolerances specified are in accordance with ASME Y14.5.

FIGURE 1. Receptacle, class H, dimensions and configurations - Continued.

## MS3443C

TABLE I. Contact cavities requiring reduced diameters (XX)  
for pins in outer row of contact cavities. 1/

Shell size	Insert arrangement	Contact cavities
8	-33 and -98	A, B, C
12	-10	C, G
14	-12	A, B, C, D, E, F, G, H
14	-18	A, C, E, G, J, L
14	-19	B, D, F, H, K, M
16	-26	A, B, C, D, E, F, G, H, J, K, L, M, N, P, R
18	-32	A, B, C, D, E, F, G, H, J, K, L, M, N, P, R, S, T
22	-41	A, B, C, D, E, F, G, H, J, K, L, M, N, P, R, S, T, U, V, W, X, Y

1/ The reduced diameter "XX" refers to the diameters of the raised seal barriers (pin barrier rings) to ensure proper sealing of pin and socket after mating. See MIL-DTL-26482, connector intermateability control dimensions (series 1 and series 2) figure for reduced diameter "XX" for contact size 20 only.

## REQUIREMENTS:

Dimensions and configuration: See figure 1 and table I.

Connector mating: This connector mates with MS3475 and MS3476.

For insert arrangement: See MIL-STD-1669.

Intermateability dimensions are in accordance with MIL-DTL-26482.

## Material:

Shell types A and B, 300 series stainless steel in accordance with ASTM A582/A582M and ASTM A276 (weld only, not intended for solder applications).

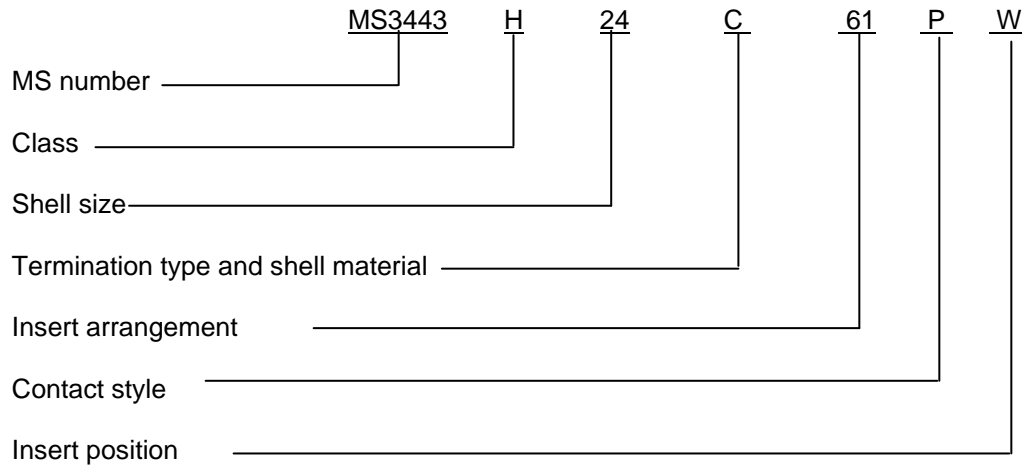
Shell type C, cold rolled steel in accordance with ASTM A108 (intended for solder applications only).

## Finish:

Shell types A and B, passivated in accordance with ASTM A967.

Shell type C, .0001 inch (2.54  $\mu$ m) tin minimum in accordance with ASTM B545 or ASTM B339 over nickel in accordance with SAE AMS-QQ-N-290. The use of pure tin, as an underplate or final finish, is prohibited both internally and externally. Tin content of connectors, their components and solder shall not exceed 97 percent, by mass. Tin shall be alloyed with a minimum of 3 percent lead, by mass.

## MS3443C



Supersession data: PIN MS3443H\*C\*\*\* supersedes PINs MS3443H\*A\*\*\* and MS3443H\*B\*\*\*.

Changes from previous issue. The margins of this specification are marked with vertical lines to indicate where changes from the previous issue were made. This was done as a convenience only and the Government assumes no liability whatsoever for any inaccuracies in these notations. Bidders and contractors are cautioned to evaluate the requirements of this document based on the entire content irrespective of the marginal notations and relationship to the last previous issue.

Referenced documents. In addition to MIL-DTL-26482, this document references the following:

MS3475  
 MS3476  
 MIL-STD-1669  
 ASME Y14.5  
 ASTM A108  
 ASTM A276  
 ASTM A967  
 ASTM A582/A582M  
 ASTM B339  
 ASTM B545  
 SAE AMS-QQ-N-290

MS3443C

CONCLUDING MATERIAL

Custodians:

Army - CR  
Navy - AS  
Air Force – 85  
DLA - CC

Preparing activity:

DLA - CC

(Project 5935-2011-004)

Review activities:

Army - AV  
Navy - EC, SH

NOTE: The activities listed above were interested in this document as of the date of this document. Since organizations and responsibilities can change, you should verify the currency of the information above using the ASSIST Online database at <https://assist.daps.dla.mil>.