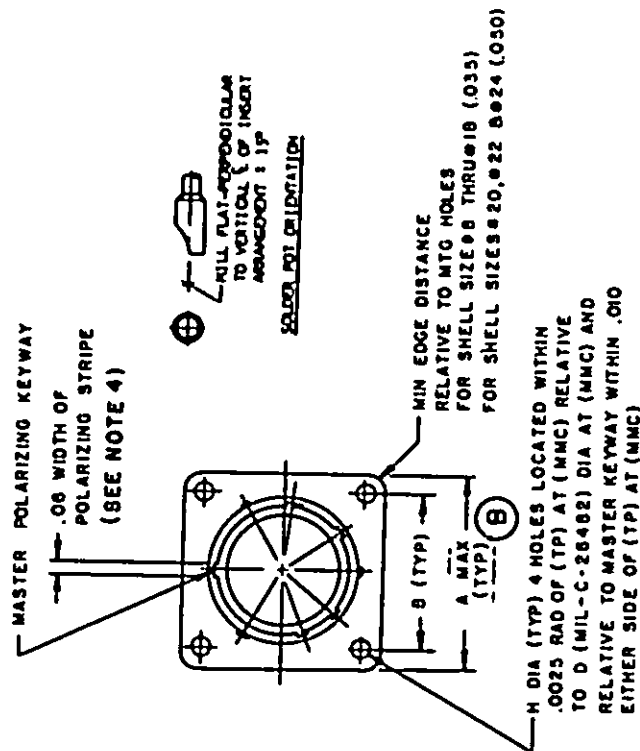


This military standard is approved for use by all Departments and Agencies of the Department of Defense. Selection for all new engineering and design applications and for repetitive use shall be made from this document when applicable.

Review activities: Army - MU EC, SH
Navy -
Air Force - 11,17,99

User activities: Army - AV
Navy -
Air Force -

P.A. Navy-AS		TITLE CONNECTORS, RECEPTACLE, ELECTRIC, SERIES 2, NARROW FLANGE MOUNT, BAYONET COUPLING, SOLDER PIN CONTACT CLASS H		FED. SUP CLASS 5935	
Other Cust Army - EL AF - 85		SUPERSEDES: MS3440 (NAVY)		MILITARY STANDARD MS 3440	
Procurement Specification MIL-C-26482				PAGE 1 OF 4	



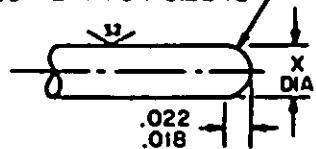
APPROVED 1 Apr 71 REVISED (A) 5 Sep 75 (B) 31 July 1978

FED. SUP CLASS
5935AV
User activities: Army -
Navy -
Air Force -EC, SH
Review activities: Army - MU
Navy -
Air Force - 11,17,99

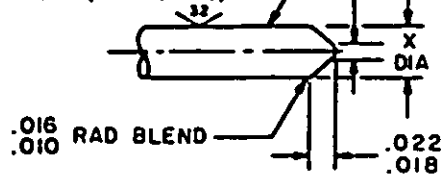
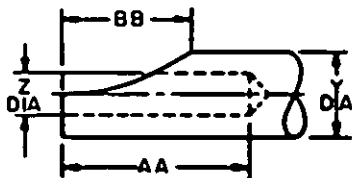
This military standard is approved for use by all Departments and Agencies of the Department of Defense. Selection for all new engineering and design applications and for repetitive use shall be made from this document when applicable.

ENGAGING END OF CONTACTS

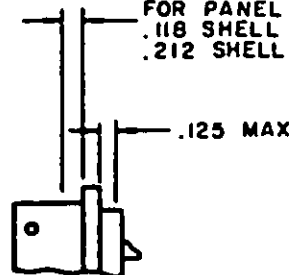
ENGAGING END APPROXIMATELY
SPHERICAL WITH
.011 MAX FLAT FOR SIZE 20
.020 \pm .005 FLAT FOR SIZE 18
.057 \pm .005 FLAT FOR SIZE 12



.011 MAX FLAT
MAY BE ROUNDED
ENGAGING END SIZE 20
ONLY (OPTIONAL)

TERMINATION END
OF CONTACTSMAX PANEL THICKNESS (TYP)

MAX ACCOMMODATION
FOR PANEL AND SCREW HEAD
.118 SHELL SIZES 8 THRU 18
.212 SHELL SIZES 20 THRU 24



APPROVED 1 Apr 71 REVISED (B) For changes see pages 1 & 4

P.A. Navy-AS

Other Cast
Army - EL
AF - 85Programmer Specification
MIL-C-26482International
Interest

TITLE CONNECTORS, RECEPTACLE,
ELECTRIC, SERIES 2, NARROW FLANGE
MOUNT, BAYONET COUPLING, SOLDER
PIN CONTACT CLASS H

SUPERSEDES:
MS3440 (NAVY)

MILITARY STANDARD

MS 3440

PAGE 2 OF 4

DD FORM 672 (Coordinated) PREVIOUS EDITIONS OF THIS FORM ARE OBSOLETE.

5935-3006-11

TABLE I. Reduced diameter (XX).

Shell size	Insert arrangements	Contact cavities
8	-33 & -98	A, B, C.
12	-10	C, G.
14	-12	A, B, C, D, E, F, G, H.
14	-18	A, C, E, G, J, L.
14	-19	B, D, F, H, K, M.
16	-26	A, B, C, D, E, F, G, H, J, K, L, M, N, P, R.
18	-32	A, B, C, D, E, F, G, H, J, K, L, M, N, P, R, S, T.
22	-41	A, B, C, D, E, F, G, H, J, K, L, M, N, P, R, S, T, U, V, W, X, Y.

Connector part numbering:

MS number MS3440
 Class H
 Shell size 24
 Termination type and shell material C
 Insert arrangement 61
 Contact style P
 Insert position W

TABLE II.

Shell size	A	B	C	D	F	G	H	J	L	P	V	Panel cutout dia	Max weight (lbs)
8	.828	.594	.563/.557	.403	.598/.578	.078/.046	.120	.125/.105	.801	.178/.118	.248/.188	.570	.038
10	.854	.719	.673/.667	.515								.580	.044
12	1.047	.812	.782/.776	.630								.789	.052
14	1.141	.906	.907/.901	.755								.914	.070
16	1.234	.969	1.032/1.026	.880								1.039	.085
18	1.328	1.062	1.157/1.151	.990	.598/.578	.078/.046		.125/.105	.801			1.164	.088
20	1.432	1.156	1.251/1.245	1.105	.660/.640	.110/.078		.093/.073	.863	.178/.118	.248/.188	1.358	.110
22	1.578	1.230	1.376/1.370	1.230	.660/.640	.110/.078	.120	.125/.105	.895	.146/.086	.216/.156	1.383	.150
24	1.703	1.375	1.501/1.495	1.385	.660/.640	.110/.078	.147	.125/.105	.895	.146/.086	.216/.156	1.508	.280

P.A. Navy - AS

International Interest

TITLE CONNECTORS, RECEPTACLE,
ELECTRIC, SERIES 2, NARROW FLANGE
MOUNT, BAYONET COUPLING, SOLDER
PIN CONTACT CLASS H

MILITARY STANDARD

MS 3440

Procurement Specification

SUPERSEDES:

MIL-C-26482

MS3440 (NAVY)

PAGE 3 of 4

User activities: Army AV
Navy
Air Force

Reviewer activities: Army MU,
Navy EC, SH
Air Force 11, 17, 99

This military standard is approved for use by all Departments and Agencies of the Department of Defense. Selection for all new engineering and design applications and for repetitive use shall be made from this document when applicable.

Cont size	X	Y	Z	AA	BB
20	.041/.039	.088/.081	.048/.042	.188/.109	.110/.068
16	.0835/.0815	.116/.098	.075/.069	.251/.172	.141/.109
12	.095/.093	.150/.130	.122/.112	.251/.172	.141/.109

INCHES	MM	INCHES	MM	INCHES	MM
.0025	.064	.280	7.11	.980	24.89
.010	.25	.403	10.24	1.026	26.06
.016	.41	.515	13.08	1.032	26.21
.018	.46	.557	14.15	1.039	26.39
.022	.56	.563	14.30	1.047	26.59
.038	.97	.578	14.68	1.062	26.97
.044	1.12	.594	15.09	1.105	28.07
.046	1.17	.598	15.19	1.141	28.98
.070	1.78	.630	16.00	1.151	29.24
.073	1.85	.640	16.26	1.156	29.36
.078	1.98	.660	16.76	1.157	29.39
.085	2.16	.667	16.94	1.164	29.57
.086	2.18	.673	17.09	1.230	31.24
.093	2.36	.680	17.27	1.234	31.34
.098	2.49	.719	18.26	1.245	31.62
.105	2.67	.755	19.18	1.250	31.75
.110	2.79	.776	19.71	1.251	31.78
.118	3.00	.782	19.86	1.258	31.95
.120	3.05	.789	20.04	1.328	33.73
.125	3.18	.801	20.35	1.375	34.92
.146	3.71	.828	21.03	1.376	34.95
.147	3.73	.880	22.35	1.383	35.13
.150	3.81	.901	22.89	1.385	35.18
.156	3.96	.906	23.01	1.453	36.91
.178	4.52	.907	23.04	1.495	37.97
.188	4.78	.914	23.22	1.501	38.13
.216	5.49	.954	24.23	1.578	40.08
.248	6.30	.969	24.61	1.703	43.26

NOTES:

1. Dimensions are in inches.
2. Metric equivalents are given for general information only and are based upon 1.00 inch = 25.4 mm.
3. Tolerances shall be .XX \pm .01, .XXX \pm .005, angular \pm 1° and X°X' \pm 30'.
4. Polarizing stripe, color optional.
5. Insert arrangements requiring reduced diameters for raised seal barriers on outer row of contact cavities as indicated. (See table 1).
6. True position tolerances specified are in accordance with ANSI Y14.5-1973.
7. For insert arrangement see MIL-STD-1669.
8. Interchangeability dimensions shall be in accordance with MIL-C-26482.
9. Shell material: Cold rolled steel per QQ-S-637.
10. Shell finish: .0001 minimum tin per MIL-T-10727 over nickel per QQ-N-290.
11. The complete requirements for procuring this connector described herein shall consist of this document and the issue in effect of MIL-C-26482.
12. For design feature purposes, this standard takes precedence over procurement documents referenced herein.
13. Referenced documents shall be of the issue in effect on date of invitations for bid.

P.A. Navy - AS	International Interest	TITLE CONNECTORS, RECEPTACLE, ELECTRIC, SERIES 2, NARROW FLANGE MOUNT, BAYONET COUPLING, SOLDER PIN CONTACT CLASS H	MILITARY STANDARD
Other Cus: Army - EL AF - 85			MS 3440
Procurement Specification MIL-C-26482		SUPERSEDES: MS3440 (NAVY)	PAGE 4 of 4

DD FORM 672 (Coordinated) 1 SEP 83 (Previous editions of this form are obsolete.)

5935-3006-11

Reviewers activities: Army MU, Navy EC, SH, Air Force 11, 17, 99

User activities: Army AV, Navy, Air Force

This military standard is approved for use by all Departments and Agencies of the Department of Defense. Selection for all new engineering and design applications and for repetitive use shall be made from this document when applicable.

APPROVED 1 Apr 71
REVISED (A) Entire standard revised (B) for changes see pages 1 & 4