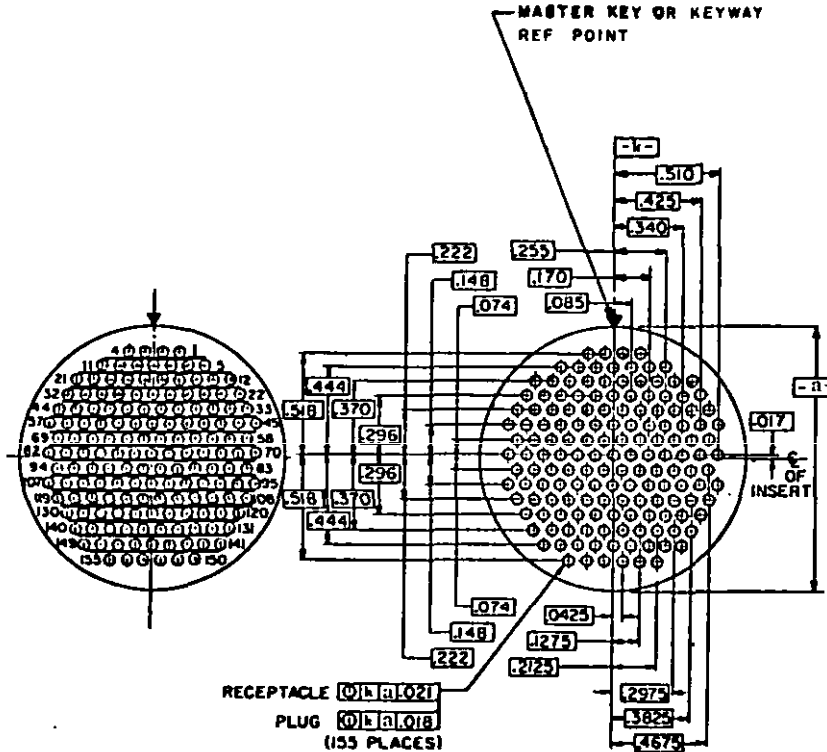


FED. SUP CLASS  
5935

Reviewer activities: Army-MI, MU, AV, WC  
Navy-SH, EC, OS  
Air Force-II, GO  
DGA-ES

User activities: Army-ME, AT  
Navy-MC  
Air Force-



CODE J01 INSERT ARRANGEMENT 24-155. SERVICE RATING 1. 155 SIZE 23-22 CONTACTS

(A) ENTIRE STANDARD REVISED

P.A. NAVY-AB	International Interest	TITLE INSERT ARRANGEMENTS. MIL-C-81511 ELECTRIC CONNECTOR. SIZE 24	MILITARY STANDARD
Other Cust ARMY-EL AF-17			MS 3433
Procurement Specification MIL-C-81011	SUPERSEDES: MIL-C-81511/16		SHEET 1 OF 4

DD FORM 672  
10 APR 64

(Coordinated) PREVIOUS EDITIONS OF THIS FORM ARE OBSOLETE.

PROJECT NO. 5935-1726-10

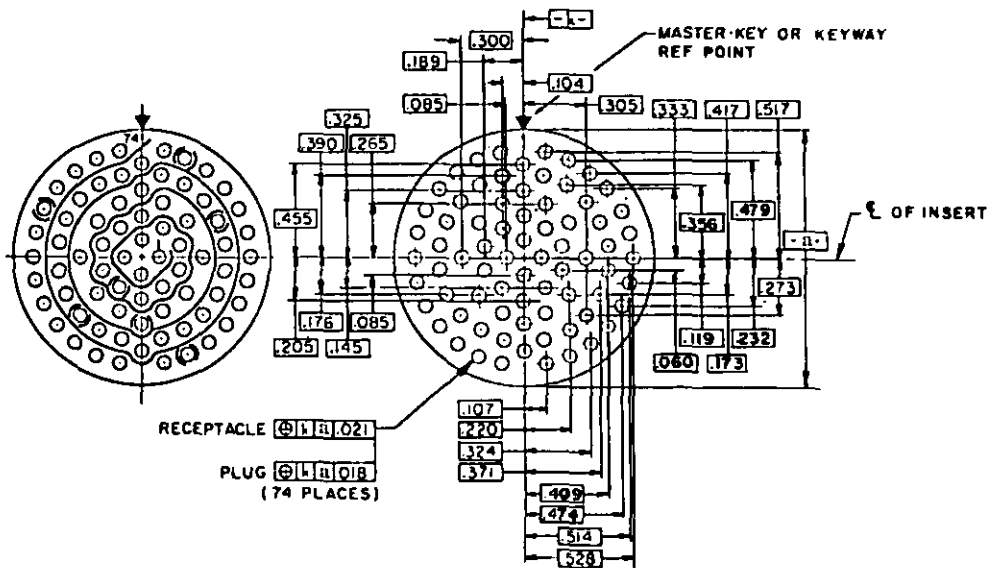
APPROVED 5 JUNE 1970 REVISED (A) 30 OCT 1970

This military standard is mandatory for use by all Departments and Agencies of the Department of Defense. Selection for all new engineering and design applications and for repetitive use shall be made from this document.

FED. SUP CLASS  
6935

Reviewer activities: Army-MI, MU, AV, WC  
 Navy-SH, EC, OS  
 Air Force-II, EO  
 OSA-EB

User activities: Army-ME, AT  
 Navy-MC  
 Air Force-



CODE J02 INSERT ARRANGEMENT 24-74. SERVICE RATING I. 74 SIZE 20-20 CONTACTS

APPROVED 5 JUNE 1970 REVISED (A) FOR CHANGES SEE SHEET 1

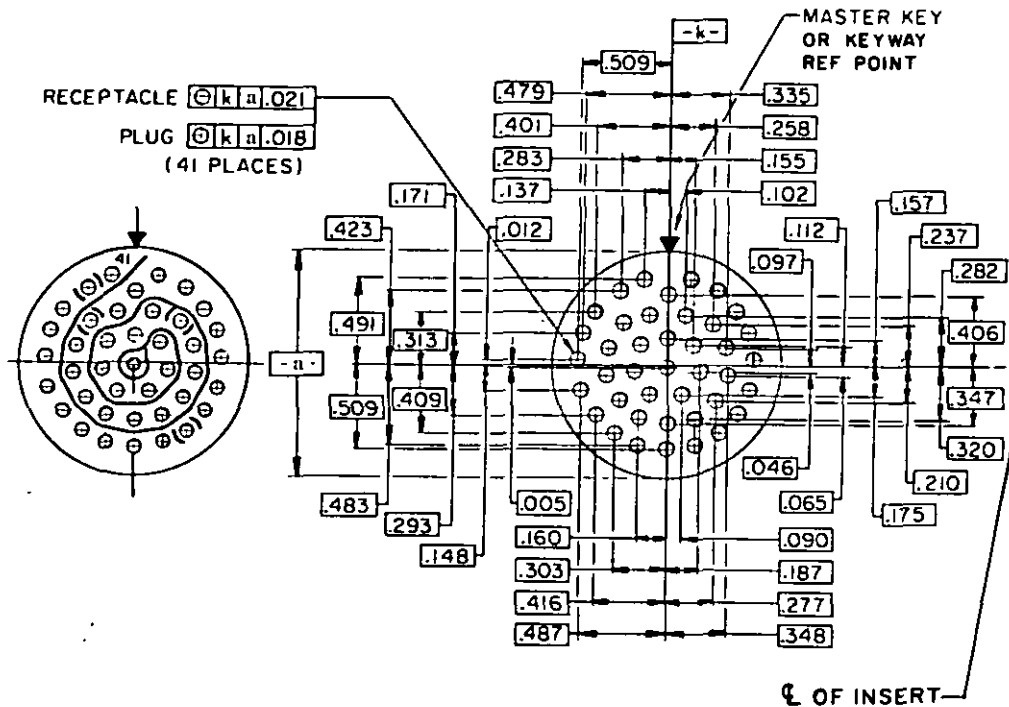
P.A. NAVY-AB	International Interest	TITLE INSERT ARRANGEMENTS. MIL-C-81511 ELECTRIC CONNECTOR. SIZE 24	MILITARY STANDARD
Other Cust ARMY-EL AF-17			MS 3433
Procurement Specification MIL-C-81511	SUPERSEDES:	MIL-C-81511/46	SHEET 2

DD FORM 10 APR 64 672 (Coordinated) PREVIOUS EDITIONS OF THIS FORM ARE OBSOLETE.

This military standard is mandatory for use by all Departments and Agencies of the Department of Defense. Selection for all new engineering and design applications and for repetitive use shall be made from this document.

FED. SUP CLASS  
5935User activities: Army-ME, AT  
Navy-MC  
Air Force -  
DSA-ESDeveloper activities: Army-MI, MU, AV, WC  
Navy-SH, EC, OS  
Air Force-II, 80

This military standard is mandatory for use by all Departments and Agencies of the Department of Defense. Selection for all new engineering and design applications and for repetitive use shall be made from this document.



CODE J03 INSERT ARRANGEMENT 24-41. SERVICE RATING 1. 41 SIZE 16-16 CONTACTS

APPROVED 5 JUNE 1970 REVISED (A) FOR CHANGES SEE SHEET 1

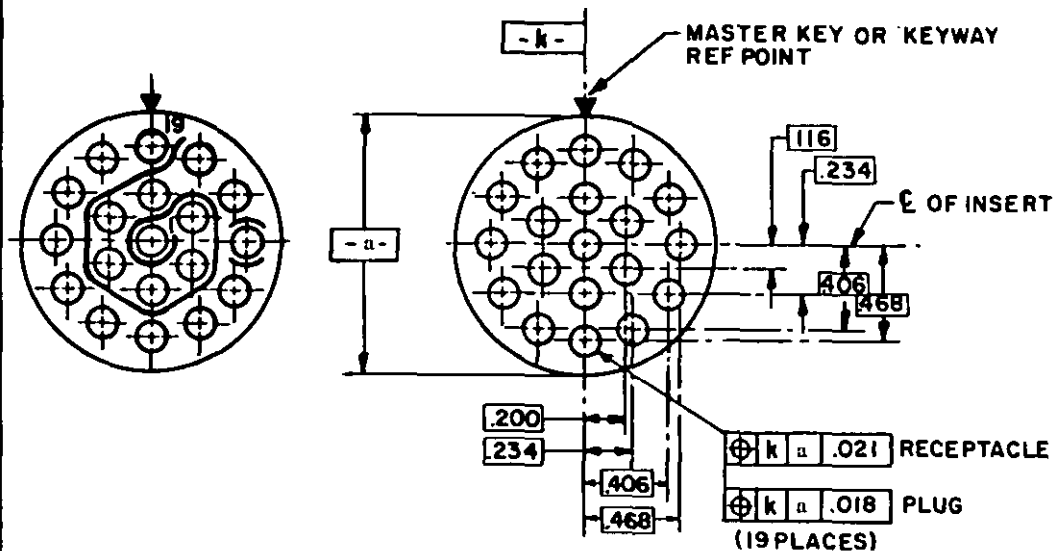
P.A. NAVY-AS	International Interest	TITLE INSERT ARRANGEMENTS, MIL-C-81511 ELECTRIC CONNECTOR, SIZE 24	MILITARY STANDARD
Other Cust ARMY-EL AF-17			MS 3433
Procurement Specification MIL-C-81511		SUPERSEDES: MIL-C-81511/46	SHEET 3

DD FORM 672 (Coordinated) PREVIOUS EDITIONS OF THIS FORM ARE OBSOLETE.  
10 APR 64

FED. SUP CLASS  
5935

Reviewer activities: Army-MI, MU, AV, WC  
Navy-SM, EC, OB  
Air Force-II, SO  
DSA-ES

User activities: Army-ME, AT  
Navy-MC  
Air Force-



CODE J04 . INSERT ARRANGEMENT 21-19. SERVICE RATING 1. 19 SIZE 12-12 CONTACTS

INCHES	MM	INCHES	MM	INCHES	MM	INCHES	MM	INCHES	MM	INCHES	MM	INCHES	MM
.005	.13	.102	2.59	.170	4.32	.232	5.89	.300	7.62	.370	9.40	.4675	11.87
.012	.30	.104	2.64	.171	4.34	.234	5.94	.303	7.70	.371	9.42	.468	11.89
.017	.43	.107	2.72	.173	4.39	.237	6.02	.305	7.75	.3825	9.72	.474	12.04
.018	.46	.112	2.84	.175	4.45	.255	6.48	.313	7.95	.390	9.91	.479	12.17
.021	.53	.116	2.95	.176	4.47	.258	6.55	.320	8.13	.401	10.19	.483	12.27
.0425	1.08	.119	3.02	.187	4.75	.265	6.73	.324	8.23	.406	10.31	.487	12.37
.046	1.17	.1275	3.24	.189	4.80	.273	6.93	.325	8.26	.409	10.39	.491	12.47
.060	1.52	.137	3.48	.200	5.08	.277	7.04	.333	8.46	.416	10.57	.509	12.93
.065	1.65	.145	3.68	.205	5.21	.282	7.16	.335	8.51	.417	10.59	.510	12.95
.074	1.88	.148	3.76	.210	5.33	.283	7.20	.340	8.64	.423	10.74	.514	13.06
.085	2.16	.155	3.94	.2125	5.40	.293	7.44	.347	8.81	.425	10.80	.517	13.13
.090	2.29	.157	3.99	.220	5.59	.296	7.52	.348	8.84	.444	11.28	.518	13.16
.097	2.46	.160	4.06	.222	5.64	.2975	7.56	.356	9.04	.455	11.56	.528	13.41

## NOTES:

1. DIMENSIONS IN INCHES.
2. UNLESS OTHERWISE INDICATED, DIMENSIONS ARE SYMMETRICAL ABOUT CENTERLINES.
3. DIMENSIONS AND MARKINGS SHOWN ARE FOR ENGAGING FACE OF PIN INSERT (SOCKET INSERT OPPOSITE).
4. ♥ INDICATES CENTERLINE OF INSERT ARRANGEMENT AND MASTER KEY OR KEY WAY OF CONNECTOR SHELL.
5. FOR DATUM u (□) REFER TO FIGURES 4 THROUGH 11 OF MIL-C-81511.

THIS IS A DESIGN STANDARD. NOT TO BE USED AS A PART NUMBER.

FOR DESIGN FEATURE PURPOSES, THIS STANDARD TAKES PRECEDENCE OVER PROCUREMENT DOCUMENTS REFERENCED HEREIN  
REFERENCED DOCUMENTS SHALL BE OF THE ISSUE IN EFFECT ON DATE OF INVITATIONS FOR BID

P.A. NAVY-AS	International Interest	TITLE INSERT ARRANGEMENTS. MIL-C-81511 ELECTRIC CONNECTOR. SIZE 24	MILITARY STANDARD
Other Cust ARMY-EL AF-17			MS 3433
Procurement Specification MIL-C-81511	SUPERSEDES: MIL-C-81511/46		SHEET 4

DD FORM 672 (Coordinated) PREVIOUS EDITIONS OF THIS FORM ARE OBSOLETE.

This military standard is mandatory for use by all Departments and Agencies of the Department of Defense. Selection for all new engineering and design applications and for repetitive use shall be made from this document.

APPROVED 5 JUNE 1970 REVISED (A) FOR CHANGES SEE SHEET 1