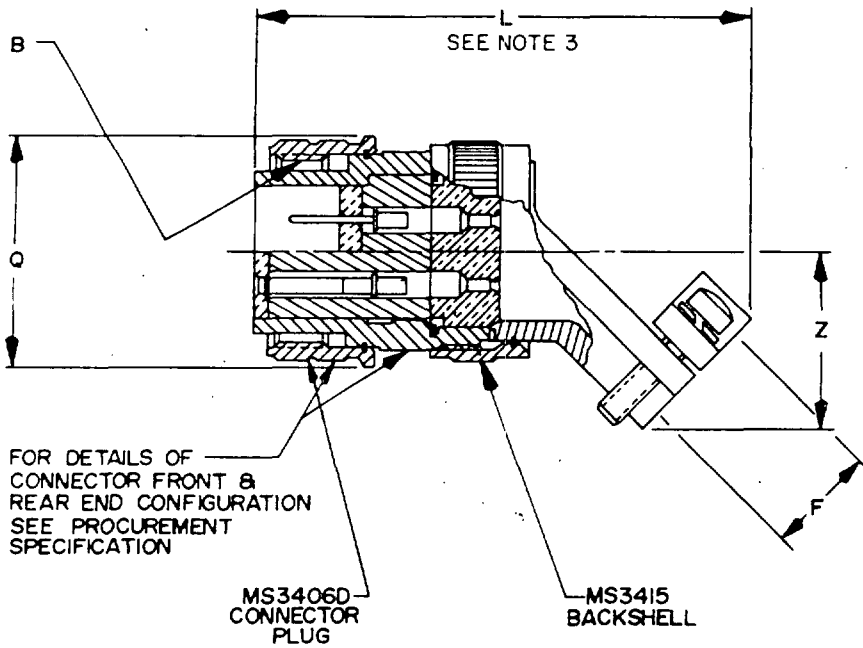


FED. SUP CLASS
5935



CLASS D ENVIRONMENTAL RESISTANT

NOTES:

1. Dimensions are in inches.
2. Unless otherwise specified, tolerance is $\pm .016$.
3. For size 8, 4 and 0 contacts, add .375 to overall length.
4. For insert arrangements see MIL-STD-1651.
5. This assembly is available only with class D or DS connector plug for jacketed cable.
6. Unless otherwise shown, corresponding features of pin and socket contact connectors are identical.
7. MIL-C-5015 crimp contact, front and rear release connectors and solder contact connectors are intermateable.
8. Dimensions and tolerances in accordance with ANSI Y14.5-1973.
9. Referenced documents shall be of the issue in effect on date of invitations for bid.
10. For design feature purposes, this standard takes precedence over procurement documents referenced herein.

(B) DENOTES CHANGES

This military standard is approved for use by Naval Air Systems Command, NAVY AS, Department of the Navy, and is available for use by all Departments and Agencies of the Department of Defense.

User activities:

Review activities:

REVISED (A) 23 MAR 76 (B) 9 APR 1979

APPROVED 17 DEC 75

P.A. Navy - AS Other Cust	International interest	TITLE	CONNECTORS, PLUG, ELECTRIC, 45° ASSEMBLY, CRIMP CONTACT, AN TYPE	MILITARY STANDARD
				MS3409(NAVY)
Procurement Specification MIL-C-5015		SUPERSEDES:		PAGE 1 OF 6

FED. SUP CLASS
5935

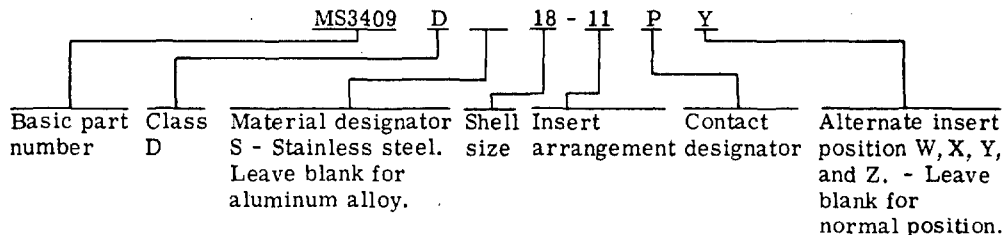
User activities:

Review activities:

This military standard is approved for use by Naval Air Systems Command, NAVY AS, Department of the Navy, and is available for use by all Departments and Agencies of the Department of Defense.

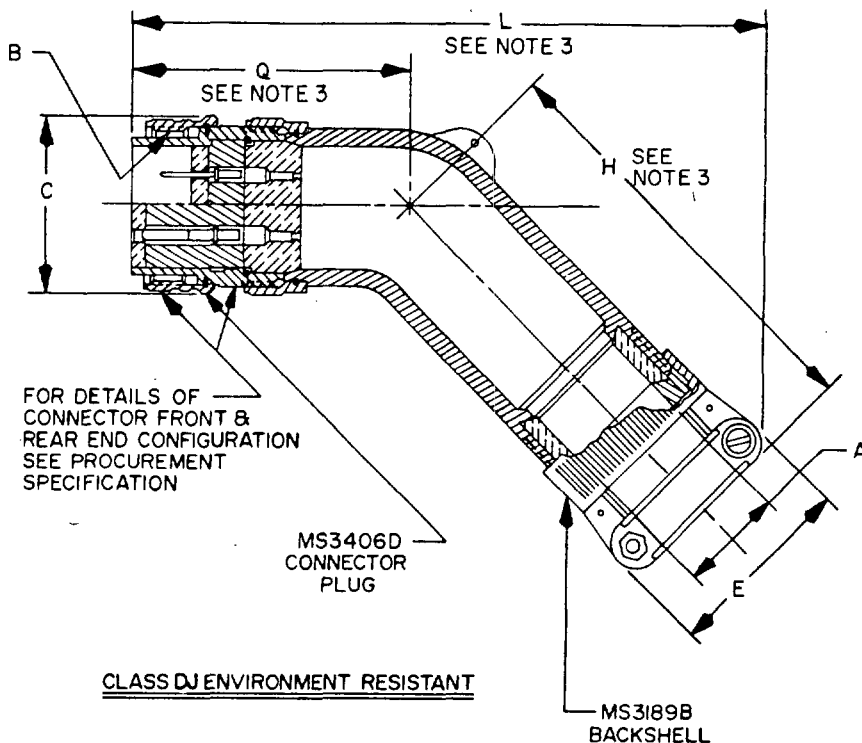
ASSEMBLY NO.	CONNECTOR PLUG NO.	ADAPTER ASSEMBLY NO.	B THREAD CLASS 2B	F CABLE ENTRY		L MAX. CLOSED	Q DIA. MAX.	Z MAX.
				MAX.	MIN.			
MS3409D85-XX	MS3406D-8S-XX	MS3415 -8C	500-28UNEF	.204	.125	3.000	.844	.772
↑ 10S-XX	↑ -10S-XX	↑ -10C	.625-24UNEF	.286	.187	3.062	.969	.803
10SL-XX	-10SL-XX	-10C	.625-24UNEF	.286	.187	3.062	.969	.803
12S-XX	-12S-XX	-12C	.750-20UNEF	.416	.291	3.125	1.062	.866
12-XX	-12-XX	-12C	.750-20UNEF	.416	.291	3.125	1.062	.866
14S-XX	-14S-XX	-14C	.875-20UNEF	.476	.351	3.188	1.156	.928
14-XX	-14-XX	-14C	.875-20UNEF	.476	.351	3.188	1.156	.928
16S-XX	-16S-XX	-16C	1.000-20UNEF	.625	.501	3.250	1.250	.991
16-XX	-16-XX	-16C	1.000-20UNEF	.625	.501	3.250	1.250	.991
18-XX	-18-XX	-18C	1.125-18UNEF	.706	.518	3.375	1.344	1.110
20-XX	-20-XX	-20C	1.250-18UNEF	.831	.581	3.438	1.469	1.172
22-XX	-22-XX	-22C	1.375-18UNEF	.956	.644	3.500	1.594	1.235
24-XX	-24-XX	-24C	1.500-18UNEF	1.081	.706	3.500	1.719	1.297
28-XX	-28-XX	-28C	1.750-18UNS	1.187	.750	3.625	1.969	1.543
32-XX	-32-XX	-32C	2.000-18UNS	1.250	.875	3.750	2.219	1.668
36-XX	-36-XX	-36C	2.250-16UN	1.375	.938	3.812	2.469	1.793
40-XX	-40-XX	-40C	2.500-16UN	1.500	.938	3.812	2.719	1.918
↓ 44-XX	↓ -44-XX	↓ -44C	2.750-16UN	1.750	1.188	4.062	2.969	2.132
MS3409D48-XX	MS3406D-48-XX	MS3415 -48C	3.000-16UN	1.875	1.312	4.125	3.219	2.257

EXAMPLE OF PART NO.: MS3409D 18-11PY



REVISED (D) FOR CHANGES SEE SHEET 3 APPROVED 17 DEC 75

P.A Navy - AS	International interest	TITLE CONNECTORS, PLUG, ELECTRIC, 45° ASSEMBLY, CRIMP CONTACT, AN TYPE	MILITARY STANDARD
Other Cust			MS3409(NAVY)
Procurement Specification MIL-C-5015	SUPERSEDES:		PAGE 2 OF 6



(B) REQUIREMENTS:

1. Connector and backshell shall be of the same material and finish in accordance with MIL-C-5015.
2. Connector, backshell and ancillary hardware shall conform to the dissimilar metal compatibility requirements of MIL-STD-454, Requirement 16.

NOTES:

1. Dimensions are in inches.
2. Unless otherwise specified, tolerance is $\pm .016$.
3. For size 8, 4 and 0 contacts, add .375 to overall length.
4. Unit package shall be marked with class DJ part number only. Connector shall be marked with class D part number.
5. This assembly is available only with class D or DS connector plug for jacketed cable.
6. Unless otherwise shown, corresponding features of pin and socket contact connectors are identical.
7. MIL-C-5015 crimp contact, front and rear release connectors and solder contact connectors are intermateable.
8. Dimensions and tolerances in accordance with ANSI Y14.5-1973.
9. Referenced documents shall be of the issue in effect on date of invitations for bid.
10. For design feature purposes, this standard takes precedence over procurement documents referenced herein.

APPROVED 17 DEC 75 REVISED (B) FOR CHANGES SEE SHEET 3

User activities:

Review activities:

This military standard is approved for use by Naval Air Systems Command, NAVY AS, Department of the Navy, and is available for use by all Departments and Agencies of the Department of Defense.

P.A Navy - AS	International interest	TITLE CONNECTORS, PLUG, ELECTRIC, 45° ASSEMBLY, CRIMP CONTACT, AN TYPE	MILITARY STANDARD
Other Cust			MS3409(NAVY)
Procurement Specification MIL-C-5015	SUPERSEDES:		PAGE 3 OF 6

FED. SUP CLASS
5935

User activities:

Review activities:

This military standard is approved for use by Naval Air Systems Command, NAVY AS, Department of the Navy, and is available for use by all Departments and Agencies of the Department of Defense.

ASSEMBLY NO.	CONNECTOR PLUG NO.	BACKSHELL ASSEMBLY NO.	CABLE MAX.	A ENTRY MIN.	B THREAD CLASS 2	E DIA. MAX.	E MAX.	H MAX.	L MAX.	Q MAX.
MS3409DJ 10AXX	MS3406D -10S-XX	MS3189B-04A	.312	.125	.625-24UNEF	.969	.957	3.062	4.875	2.438
10BXX	-10S-XX	-49A	.437	.250	↑	↑	1.145	3.062	5.812	3.250
10DXX	-10S-XX	-05A	.375	.250	↓	↓	1.145	2.438	4.562	2.438
11AXX	-10SI-XX	-04A	.312	.125	↓	↓	.957	3.062	4.875	2.438
11BXX	-10SI-XX	-49A	.437	.250	↓	↓	1.145	3.062	5.812	3.250
11DXX	-10SI-XX	-05A	.375	.250	.625-24UNEF	.969	1.145	2.438	4.562	2.438
13AXX	-12S-XX	-06A	.312	.125	.750-20UNEF	1.062	.957	3.062	5.000	2.500
13BXX	-12S-XX	-71A	.625	.350	↑	↑	1.332	3.312	6.188	3.375
13DXX	-12S-XX	-08A	.500	.350	↓	↓	1.332	3.062	5.125	2.500
13EXX	-12S-XX	-07A	.437	.250	↓	↓	1.145	3.062	5.062	2.500
12AXX	-12-XX	-06A	.312	.125	↓	↓	.957	3.062	5.000	2.500
12BXX	-12-XX	-71A	.625	.350	↓	↓	1.332	2.938	6.188	3.375
12DXX	-12-XX	-08A	.500	.350	↓	↓	1.332	3.062	5.125	2.500
12EXX	-12-XX	-07A	.437	.250	.750-20UNEF	1.062	1.145	3.062	5.062	2.500
15AXX	-14S-XX	-09A	.437	.250	.375-20UNEF	1.156	1.145	3.188	5.133	2.562
15BXX	-14S-XX	-50A	.750	.500	↑	↑	1.551	3.500	6.625	3.625
15DXX	-14S-XX	-10A	.575	.350	↓	↓	1.332	2.812	5.000	2.562
15EXX	-14S-XX	-74A	.312	.125	↓	↓	.957	3.188	5.125	2.562
14AXX	-14-XX	-09A	.437	.250	↓	↓	1.145	3.188	5.138	2.562
14BXX	-14-XX	-50A	.750	.500	↓	↓	1.551	3.500	6.625	3.625
14DXX	-14-XX	-10A	.575	.350	↓	↓	1.332	2.812	5.000	2.562
14EXX	-14-XX	-74A	.312	.125	.875-20UNEF	1.156	.957	3.188	5.125	2.562
17AXX	-16S-XX	-12A	.700	.500	1.000-20UNEF	1.250	1.551	2.938	5.312	2.625
17BXX	-16S-XX	-51A	.937	.625	↑	↑	1.770	3.750	6.938	3.688
17DXX	-16S-XX	-11A	.437	.250	↓	↓	1.145	3.312	5.375	2.625
17EXX	-16S-XX	-40A	.625	.350	↓	↓	1.332	3.312	5.438	2.625
16AXX	-16-XX	-12A	.700	.500	↓	↓	1.551	2.938	5.312	2.625
16BXX	-16-XX	-51A	.937	.625	↓	↓	1.770	3.750	6.938	3.688
16DXX	-16-XX	-11A	.437	.250	↓	↓	1.145	3.312	5.375	2.625
16EXX	-16-XX	-40A	.625	.350	1.000-20UNEF	1.250	1.332	3.312	5.438	2.625
18AXX	-18-XX	-13A	.625	.350	1.125-13UNEF	1.344	1.332	3.500	5.750	2.312
18BXX	-18-XX	-52A	.750	.500	↑	↑	1.551	3.500	5.375	2.812
18EXX	-18-XX	-41A	.312	.125	↓	↓	.957	3.500	5.625	2.812
18FXX	-18-XX	-42A	.437	.250	1.125-13UNEF	1.344	1.145	3.500	5.688	2.812
20AXX	-20-XX	-15A	.625	.350	1.250-18UNEF	1.469	1.332	3.500	5.750	2.812
20BXX	-20-XX	-54A	.750	.500	↑	↑	1.551	3.500	5.875	2.312
20EXX	-20-XX	-55A	1.250	.875	↓	↓	2.113	4.000	7.375	3.812
20FXX	-20-XX	-43A	.437	.250	↓	↓	1.145	3.500	5.638	2.812
20GXX	-20-XX	-16A	.904	.625	1.250-13UNEF	1.469	1.770	3.250	5.750	2.312
22AXX	-22-XX	-56A	.625	.350	1.375-13UNEF	1.594	1.332	3.625	5.938	2.938
22BXX	-22-XX	-17A	.750	.500	↑	↑	1.551	3.638	6.062	2.938
22DXX	-22-XX	-57A	.937	.625	↓	↓	1.770	3.750	6.133	2.938
22EXX	-22-XX	-58A	1.250	.875	↓	↓	2.113	4.000	7.375	3.812
MS3409DJ 22EXX	MS3406D -22-XX	MS3189B -44A	.312	.125	1.375-13UNEF	1.594	.957	3.625	5.312	2.938

REVISED (B) FOR CHANGES SEE SHEET 3
APPROVED 17 DEC 75

P.A Navy - AS	International interest	TITLE CONNECTORS, PLUG, ELECTRIC, 45° ASSEMBLY, CRIMP CONTACT, AN TYPE	MILITARY STANDARD
Other Cust			MS3409(NAVY)
Procurement Specification MIL-C-5015	SUPERSEDES:		PAGE 4 OF 6

ASSEMBLY NO.	CONNECTOR PLUG NO.	BACKSHELL ASSEMBLY NO.	A CABLE MAX.	A ENTRY MIN.	B. THREAD CLASS 2	C DIA. MAX.	E MAX.	H MAX.	L MAX.	Ø MAX.
MS3409DJ 22GXX	MS3406D -22-XX	MS3189B-45A	.437	.250	1.375-18UNEF	1.594	1.145	3.625	5.875	2.938
↑ 22HXX	↑ -22-XX	↑ -18A	1.029	.375	1.375-18UNEF	1.594	2.113	3.625	6.250	2.938
24AXX	-24-XX	-19A	.750	.500	1.500-18UNEF	1.719	1.551	3.688	6.062	2.938
24DXX	-24-XX	-59A	.937	.625	↑	↑	1.770	3.750	6.138	2.938
24EXX	-24-XX	-73A	1.250	.875	↑	↑	2.113	4.000	7.375	3.812
24FXX	-24-XX	-46A	.625	.350	↓	↓	1.332	3.625	5.938	2.938
24GXX	-24-XX	-20A	1.144	.875	1.500-18UNEF	1.719	2.113	3.625	6.250	2.938
28AXX	-28-XX	-60A	.750	.500	1.750-18UNS	1.969	1.551	3.688	6.250	3.062
28BXX	-28-XX	-21A	.937	.625	↑	↑	1.770	3.812	6.375	3.062
28DXX	-28-XX	-61A	1.250	.875	↓	↓	2.113	4.000	6.625	3.062
28EXX	-28-XX	-22A	1.375	1.000	1.750-18UNS	1.969	2.363	3.612	6.562	3.062
32AXX	-32-XX	-23A	.937	.625	2.000-18UNS	2.219	1.770	3.938	6.500	3.125
32BXX	-32-XX	-24A	1.250	.875	↑	↑	2.113	4.125	6.750	3.125
32DXX	-32-XX	-62A	1.375	1.000	↓	↓	2.363	4.250	6.938	3.125
32EXX	-32-XX	-25A	1.625	1.250	2.000-18UNS	2.219	2.770	4.188	7.062	3.125
36AXX	-36-XX	-63A	1.250	.875	2.250-16UN	2.469	2.113	4.250	6.875	3.125
36BXX	-36-XX	-27A	1.375	1.000	↑	↑	2.363	4.375	7.062	3.125
36DXX	-36-XX	-64A	1.625	1.250	↑	↑	2.770	4.625	7.375	3.125
36EXX	-36-XX	-28A	1.840	1.437	↓	↓	3.020	4.312	7.250	3.125
36FXX	-36-XX	-47A	.750	.500	↓	↓	1.551	3.875	6.438	3.125
36GXX	-36-XX	-26A	.937	.625	2.250-16UN	2.469	1.770	4.000	6.625	3.125
40AXX	-40-XX	-65A	1.250	.875	2.500-16UN	2.719	2.113	4.250	7.625	3.875
40BXX	-40-XX	-30A	1.375	1.000	↑	↑	2.363	4.375	7.812	3.875
40DXX	-40-XX	-66A	1.625	1.250	↑	↑	2.770	4.625	8.125	3.875
40EXX	-40-XX	-31A	1.840	1.437	↓	↓	3.020	4.312	8.000	3.875
40FXX	-40-XX	-48A	.750	.500	2.500-16UN	2.719	1.551	3.675	7.188	3.125
44AXX	-44-XX	-67A	1.250	.875	2.750-16UN	2.969	2.113	4.250	7.625	3.875
44BXX	-44-XX	-33A	1.375	1.000	↑	↑	2.363	4.375	7.812	3.875
44DXX	-44-XX	-68A	1.625	1.250	↑	↑	2.770	4.625	8.125	3.875
44EXX	-44-XX	-34A	1.840	1.437	↓	↓	3.020	4.312	8.000	3.875
44FXX	-44-XX	-32A	.937	.625	2.750-16UN	2.969	1.770	4.000	7.375	3.875
48AXX	-48-XX	-69A	1.250	.875	3.000-16UN	3.219	2.113	4.250	7.625	3.875
48BXX	-48-XX	-36A	1.375	1.000	↑	↑	2.363	4.375	7.812	3.875
48DXX	-48-XX	-70A	1.625	1.250	↓	↓	2.770	4.625	8.125	3.875
MS3409DJ 48EXX	MS3406D -48-XX	MS3189B-37A	1.840	1.437	3.000-16UN	3.219	3.020	4.312	8.000	3.875

REVISED (B) FOR CHANGES SEE SHEET 3
APPROVED 17 DEC 75

User activities:
Review activities:
This military standard is approved for use by Naval Air Systems Command, NAVY AS, Department of the Navy, and is available for use by all Departments and Agencies of the Department of Defense.

P.A Navy - AS	International interest	TITLE CONNECTORS, PLUG, ELECTRIC, 45° ASSEMBLY, CRIMP CONTACT, AN TYPE	MILITARY STANDARD
Other Cust			MS3409(NAVY)
Purchase Specification MIL-C-5015	SUPERSEDES:		PAGE 5 OF 6

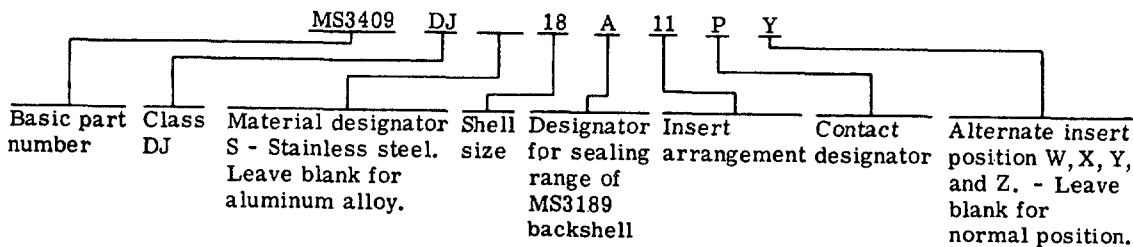
FED. SUP CLASS
5935

SUPERSESION DATA	
Buships Dwg. RE49D2038 Part number	Superseded by Part number
10-214910-**	MS3409DJ10A**
911-**	11A**
912-**	13A**
913-**	12A**
914-**	15A**
915-**	14A**
916-**	17E**
917-**	16E**
918-**	18A**
920-**	20B**
922-**	22B**
924-**	24D**
928-**	28B**
932-**	32B**
936-**	36B**
940-**	40D**
10-214944-**	MS3409DJ44E**

User activities:

Review activities:

EXAMPLE OF PART NO. : MS3409DJ 18A11PY



This military standard is approved for use by Naval Air Systems Command, NAVY AS, Department of the Navy, and is available for use by all Departments and Agencies of the Department of Defense.

REVISED (B) FOR CHANGES SEE SHEET 3
APPROVED 17 DEC 75

P.A Navy - AS	International interest	TITLE CONNECTORS, PLUG, ELECTRIC, 45° ASSEMBLY, CRIMP CONTACT, AN TYPE	MILITARY STANDARD
Other Cust			MS3409(NAVY)
Procurement Specification MIL-C-5015		SUPERSEDES:	PAGE 6 OF 6

DD FORM 672 (Limited coordinated) PREVIOUS EDITIONS OF THIS FORM ARE OBSOLETE.
1 MAY 73