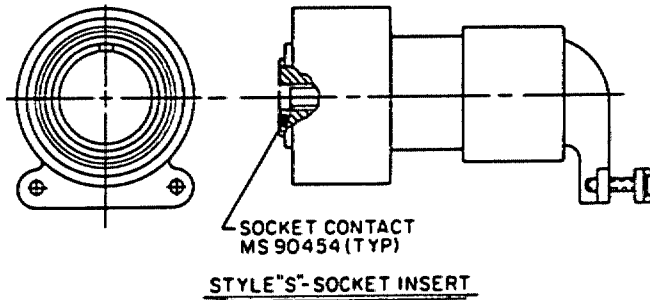
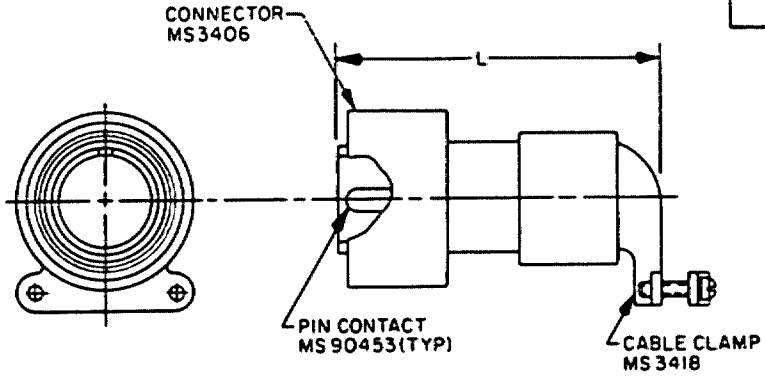


FED. SUP CLASS
5935



Class D & L environment resistant

Class L inactive for design after 23 Mar 76

NOTES:

1. Dimensions are in inches.
2. Unless otherwise specified, tolerance is $\pm .016$.
3. Dimensions and tolerancing in accordance with ANSI Y14.5-1973.
4. MIL-C-5015 crimp contact connectors are interchangeable with corresponding solder contact connectors.
5. Unless otherwise shown, corresponding features of style "S" and "P" are identical.
6. For insert arrangements see MIL-STD-1651.
7. For design feature purposes, this standard takes precedence over procurement documents referenced herein.
8. Referenced documents shall be of the issue in effect on date of invitations for bid.

Ⓓ DENOTES CHANGES

P.A Navy - AS	International Interest	TITLE CONNECTORS, PLUG, ELECTRIC, 90° ASSEMBLY, CRIMP CONTACT, AN TYPE	MILITARY STANDARD
Other Cust			MS3408(NAVY)
Procurement Specification MIL-C-5015		SUPERSEDES	PAGE 1 OF 6

DD FORM 672 (Limited coordinated) PREVIOUS EDITIONS OF THIS FORM ARE OBSOLETE
1 MAY 73

PROJECT NO. 5935-ND66-4

This military standard is approved for use by Naval Air Systems Command,
 NAVY AS, Department of the Navy, and is available for
 use by all Departments and Agencies of the Department of Defense.

User activities:

Review activities:

APPROVED 14 Jun 71 REVISED (A) 31 Oct 72 (B) 17 DEC 75 (C) 23 MAR 76 (D) 9 April 1979

FED. SUP CLASS
5935

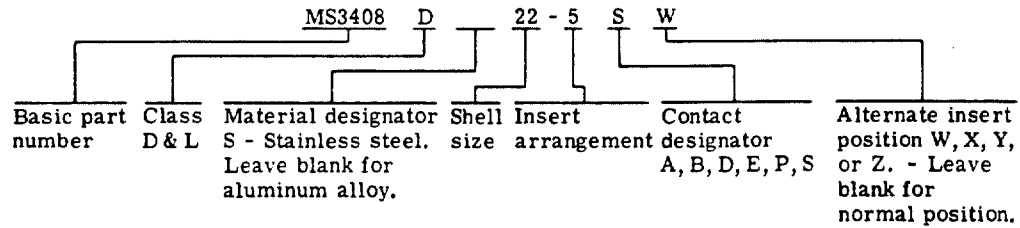
SIZE	L - MAX	
	16 & 12 CONTACTS	8, 4 & 0 CONTACTS
8S	2.475	
10S	2.500	
10SL	2.555	
12S	2.555	
12	2.625	
14S	2.615	
14	2.685	
16S	2.695	
16	2.765	3.165
18	2.810	3.210
20	2.875	3.275
22	2.935	3.335
24	2.995	3.395
28	3.160	3.560
32	3.250	3.650
36	3.375	3.775
40	3.510	3.910
44	3.635	4.035
48	3.760	4.160

User activities:

Review activities:

This military standard is approved for use by Naval Air Systems Command, NAVY AS, Department of the Navy, and is available for use by all Departments and Agencies of the Department of Defense.

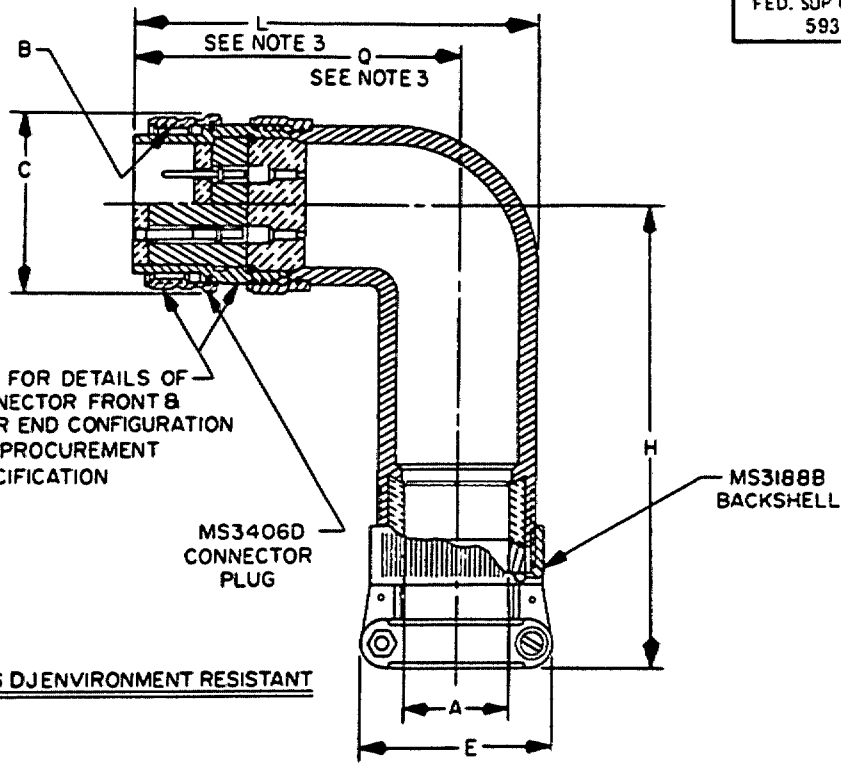
EXAMPLE OF PART NO.: MS3408D 22-5S W



APPROVED 14 Jun 71 REVISED (D) FOR CHANGES SEE SHEET 3

P.A Navy - AS	International interest	TITLE CONNECTORS, PLUG, ELECTRIC, 90° ASSEMBLY, CRIMP CONTACT, AN TYPE	MILITARY STANDARD
Other Cust			MS3408(NAVY)
Procurement Specification MIL-C-5015		SUPERSEDES:	PAGE 2 OF 6

FED. SUP CLASS
5935



User activities:

Review activities:

This military standard is approved for use by Naval Air Systems Command, NAVY AS, Department of the Navy, and is available for use by all Departments and Agencies of the Department of Defense.

- REQUIREMENTS:**
1. Connector and backshell shall be of the same material and finish in accordance with MIL-C-5015.
 2. Connector, backshell and ancillary hardware shall conform to the dissimilar metal compatibility requirements of MIL-STD-454, Requirement 16.

- NOTES:**
1. Dimensions are in inches.
 2. Unless otherwise specified, tolerance is $\pm .016$.
 3. For size 8, 4 and 0 contacts, add .375 to overall length.
 4. Unit package shall be marked with class DJ part number only. Connector shall be marked with class D part number.
 5. This assembly is available only with class D or DS connector plug for jacketed cable.
 6. Unless otherwise shown, corresponding features of pin and socket contact connectors are identical.
 7. MIL-C-5015 crimp contact, front and rear release connectors and solder contact connectors are interchangeable.
 8. Dimensions and tolerances in accordance with ANSI Y14.5-1973.
 9. Referenced documents shall be of the issue in effect on date of invitations for bid.
 10. For design feature purposes, this standard takes precedence over procurement documents referenced herein.

APPROVED 14 Jun 71 REVISED 12 FOR CHANGES SEE SHEET 3

P.A Navy - AS Other Cust	International Interest	TITLE CONNECTORS, PLUG, ELECTRIC, 90° ASSEMBLY, CRIMP CONTACT, AN TYPE	MILITARY STANDARD
Procurement Specification MIL-C-5015		SUPERSEDES.	MS3408(NAVY)
			PAGE 3 OF 6

FED. SUP CLASS
5935

User activities:

Review activities:

This military standard is approved for use by Naval Air Systems Command, Navy, and is available for use by all Departments and Agencies of the Department of Defense.

ASSEMBLY NO.	CONNECTOR PLUG NO.	BACKSHELL ASSEMBLY NO.	A CABLE ENTRY		B THREAD CLASS 2	C DIA. MAX.	E MAX.	H MAX.	L MAX.	Q MAX.
MS3408DJ 10AXX	MS3406D -10S-XX	MS3188B -04A	.312	.125	.625-24UNEF	.969	.957	3.125	3.000	2.500
↑ 10BXX	↑ -10S-XX	↑ -49A	.437	.250	↑	↑	1.145	3.125	3.812	3.250
10DXX	-10S-XX	-05A	.375	.250	↑	↑	1.145	2.500	3.062	2.500
11AXX	-10SI-XX	-04A	.312	.125	↓	↓	.957	3.125	3.000	2.500
11BXX	-10SI-XX	-49A	.437	.250	↓	↓	1.145	3.125	3.812	3.250
11DXX	-10SI-XX	-05A	.375	.250	.625-24UNEF	.969	1.145	2.500	3.062	2.500
13AXX	-12S-XX	-06A	.312	.125	.750-20UNEF	1.062	.957	3.125	3.000	2.500
13BXX	-12S-XX	-71A	.625	.350	↑	↑	1.332	3.312	4.188	3.562
13DXX	-12S-XX	-08A	.500	.350	↑	↑	1.332	2.500	3.188	2.500
13EXX	-12S-XX	-07A	.437	.250	↑	↑	1.145	3.125	3.062	2.500
12AXX	-12-XX	-06A	.312	.125	↓	↓	.957	3.125	3.000	2.500
12BXX	-12-XX	-71A	.625	.350	↓	↓	1.332	3.312	4.188	3.562
12DXX	-12-XX	-08A	.500	.350	↓	↓	1.332	2.500	3.188	2.500
12EXX	-12-XX	-07A	.437	.250	.750-20UNEF	1.062	1.145	3.125	3.062	2.500
15AXX	-14S-XX	-09A	.437	.250	.875-20UNEF	1.156	1.145	3.138	3.188	2.688
15BXX	-14S-XX	-50A	.750	.500	↑	↑	1.551	3.500	4.375	3.625
15DXX	-14S-XX	-10A	.575	.350	↑	↑	1.332	2.312	3.250	2.688
15EXX	-14S-XX	-74A	.312	.125	↑	↑	.957	3.188	3.125	2.625
14AXX	-14-XX	-09A	.437	.250	↑	↑	1.145	3.188	3.188	2.688
14BXX	-14-XX	-50A	.750	.500	↑	↑	1.551	3.500	4.375	3.625
14DXX	-14-XX	-10A	.575	.350	↑	↑	1.332	2.812	3.250	2.688
14EXX	-14-XX	-74A	.312	.125	.875-20UNEF	1.156	.957	3.188	3.125	2.625
17AXX	-16S-XX	-12A	.700	.500	1.000-20UNEF	1.250	1.551	2.938	3.562	2.812
17BXX	-16S-XX	-51A	.937	.625	↑	↑	1.770	3.688	4.688	3.750
17DXX	-16S-XX	-11A	.437	.250	↑	↑	1.145	3.312	3.375	2.812
17EXX	-16S-XX	-40A	.625	.350	↑	↑	1.332	3.312	3.438	2.812
16AXX	-16-XX	-12A	.700	.500	↑	↑	1.551	2.938	3.562	2.812
16BXX	-16-XX	-51A	.937	.625	↑	↑	1.770	3.688	4.688	3.750
16DXX	-16-XX	-11A	.437	.250	↓	↓	1.145	3.312	3.375	2.812
16EXX	-16-XX	-40A	.625	.350	1.000-20UNEF	1.250	1.332	3.312	3.438	2.812
18AXX	-18-XX	-13A	.625	.350	1.125-18UNEF	1.344	1.332	3.438	3.625	2.875
18BXX	-18-XX	-52A	.750	.500	↑	↑	1.551	3.500	3.625	2.875
18DXX	-18-XX	-41A	.312	.125	↑	↑	.957	3.438	3.625	2.875
18EXX	-18-XX	-42A	.437	.250	1.125-18UNEF	1.344	1.145	3.438	3.625	2.875
20AXX	-20-XX	-15A	.625	.350	1.250-18UNEF	1.469	1.332	3.438	3.625	2.875
20BXX	-20-XX	-54A	.750	.500	↑	↑	1.551	3.500	3.625	2.875
20DXX	-20-XX	-55A	1.250	.875	↑	↑	2.113	4.062	4.938	3.875
20EXX	-20-XX	-43A	.437	.250	↓	↓	1.145	3.438	3.625	2.875
20GXX	-20-XX	-16A	.904	.625	1.250-18UNEF	1.469	1.770	3.250	3.750	2.875
22AXX	-22-XX	-56A	.625	.350	1.375-18UNEF	1.594	1.332	3.562	3.875	3.000
22BXX	-22-XX	-17A	.750	.500	↑	↑	1.551	3.625	3.375	3.000
22DXX	-22-XX	-57A	.937	.625	↑	↑	1.770	3.688	3.938	3.000
22EXX	-22-XX	-58A	1.250	.875	↓	↓	2.113	4.062	4.938	3.875
MS3408DJ 22FXX	MS3406D -22-XX	MS3188B -44A	.312	.125	1.375-18UNEF	1.594	.957	3.562	3.875	3.000

APPROVED 14 Jun 71 REVISED (D) FOR CHANGES SEE SHEET 3

P.A Navy - AS Other Cust	International interest	TITLE CONNECTORS, PLUG, ELECTRIC, 90° ASSEMBLY, CRIMP CONTACT, AN TYPE	MILITARY STANDARD
Procurement Specification MIL-C-5015		SUPERSEDES:	MS3408(NAVY)
			PAGE 4 OF 6

FED. SUP CLASS
5935

User activities:

 Review activities:

 This military standard is approved for use by Naval Air Systems Command, NAVY AS, Department of the Navy, and is available for use by all Departments and Agencies of the Department of Defense.

ASSEMBLY NO.	CONNECTOR PLUG NO.	BACKSHELL ASSEMBLY NO.	A		B	C	E	H	L	O
			CABLE MPX.	ENTRY HTH.						
MS3408J 225XX	MS3408J -22-XX	MS3138 -45A	.937	.250	1.375-18UNEF	1.594	1.145	3.562	3.875	3.000
22HXX	-22-XX	-13A	1.029	.975	1.375-18UNEF	1.594	2.113	3.562	4.062	3.000
244XX	-24-XX	-19A	.750	.500	1.500-18UNEF	1.719	1.551	3.625	4.875	3.000
240XX	-24-XX	-59A	.937	.625			1.770	3.684	4.938	3.000
244XX	-24-XX	-73A	1.250	.375			2.113	4.062	4.938	3.875
24FXX	-24-XX	-46A	.625	.350			1.332	3.562	3.875	3.000
24GXX	-24-XX	-20A	1.144	.875	1.500-18UNEF	1.719	2.113	3.562	4.062	3.000
284XX	-28-XX	-60A	.750	.500	1.750-18UNEF	1.969	1.551	3.750	4.125	3.125
282XX	-28-XX	-21A	.937	.625			1.770	3.375	4.125	3.125
28DXX	-28-XX	-61A	1.250	.375			2.113	4.062	4.188	3.125
28EXX	-28-XX	-22A	1.375	1.000	1.750-18UNEF	1.969	2.363	3.875	4.312	3.125
324XX	-32-XX	-23A	.937	.625	2.000-18UNEF	2.219	1.770	4.125	4.625	3.500
322XX	-32-XX	-24A	1.250	.875			2.113	4.312	4.625	3.500
32DXX	-32-XX	-62A	1.375	1.000			2.363	4.438	4.625	3.500
32EXX	-32-XX	-25A	1.625	1.250	2.000-18UNEF	2.219	2.770	4.375	4.375	3.500
364XX	-36-XX	-63A	1.250	.375	2.250-18UNEF	2.469	2.113	4.312	4.938	3.688
36BXX	-36-XX	-27A	1.375	1.000			2.363	4.438	4.938	3.688
36DXX	-36-XX	-64A	1.625	1.250			2.770	4.684	5.062	3.688
36EXX	-36-XX	-28A	1.840	1.437			3.020	4.375	5.188	3.688
36FXX	-36-XX	-47A	.750	.500			1.551	4.000	4.938	3.688
36GXX	-36-XX	-26A	.937	.625	2.250-16UN	2.469	1.770	4.062	4.938	3.688
404XX	-40-XX	-65A	1.250	.375	2.500-16UN	2.719	2.113	4.312	5.688	4.438
402XX	-40-XX	-30A	1.375	1.000			2.363	4.438	5.688	4.438
40DXX	-40-XX	-66A	1.625	1.250			2.770	4.684	5.612	4.438
40EXX	-40-XX	-31A	1.840	1.437			3.020	4.375	5.938	4.438
40FXX	-40-XX	-40A	.750	.500	2.500-16UN	2.719	1.551	4.000	5.688	3.688
40GXX	-40-XX	-67A	1.250	.875	2.750-15UN	2.969	2.113	4.312	5.688	4.438
44BXX	-44-XX	-33A	1.375	1.000			2.363	4.438	5.688	4.438
44DXX	-44-XX	-68A	1.625	1.250			2.770	4.684	5.212	4.438
44EXX	-44-XX	-34A	1.840	1.437			3.020	4.375	5.938	4.438
44CXX	-44-XX	-32A	.937	.625	2.750-16UN	2.969	1.770	4.062	5.688	4.438
484XX	-48-XX	-69A	1.250	.875	3.000-16UN	3.219	2.113	4.312	5.688	4.438
48BXX	-48-XX	-36A	.375	1.000			2.363	4.438	5.688	4.438
48EXX	-48-XX	-70A	1.625	1.250			2.770	4.684	5.812	4.438
MS3408J 48FXX	MS3408J -48-XX	MS3138 -37A	1.840	1.437	2.000-16UN	3.219	3.020	4.375	5.938	4.438

APPROVED 14 Jun 71 REVISED FOR CHANGES SEE SHEET 3

PA Navy - AS Other Cust	Instrument Interiors	TITLE CONNECTORS, PLUG, ELECTRIC, 90° ASSEMBLY, CRIMP CONTACT, AN TYPE	MILITARY STANDARD
			MS3408(NAVY)
Procurement Specification MIL-C-5015		SUPERSEDES	PAGE 5 OF 6

FED. SUP CLASS
5935

SUPERSESION DATA

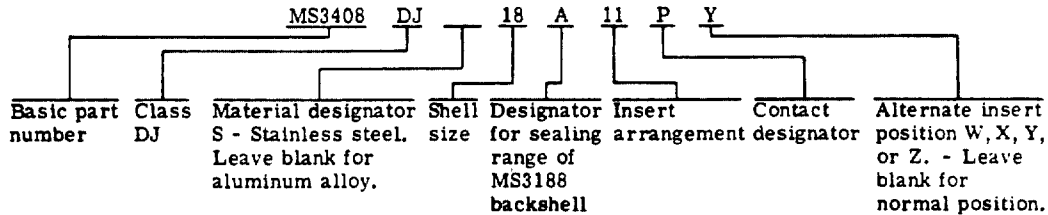
Buships Dwg. RE49D2041 Part number	Superseded by Part number
10-214810-**-	MS3408DJ10A**
811-**-	11A**
812-**-	13A**
813-**-	12A**
814-**-	15A**
815-**-	14A**
816-**-	17E**
817-**-	16E**
818-**-	18A**
820-**-	20B**
822-**-	22B**
824-**-	24D**
828-**-	28B**
832-**-	32B**
836-**-	36B**
840-**-	40D**
10-214844-**-	MS3408DJ44E**

User activities:

Review activities:

This military standard is approved for use by Naval Air Systems Command, NAVY AS, Department of the Navy, and is available for use by all Departments and Agencies of the Department of Defense.

EXAMPLE OF PART NO.: MS3408DJ 18A11PY



APPROVED 14 Jun 71 REVISED (D) FOR CHANGES SEE SHEET 3

P.A Navy - AS Other Cust	International Interest	TITLE CONNECTORS, PLUG, ELECTRIC, 90° ASSEMBLY, CRIMP CONTACT, AN TYPE	MILITARY STANDARD MS3408(NAVY)
Procurement Specification MIL-C-5015	SUPERSEDES:		PAGE 6 OF 6