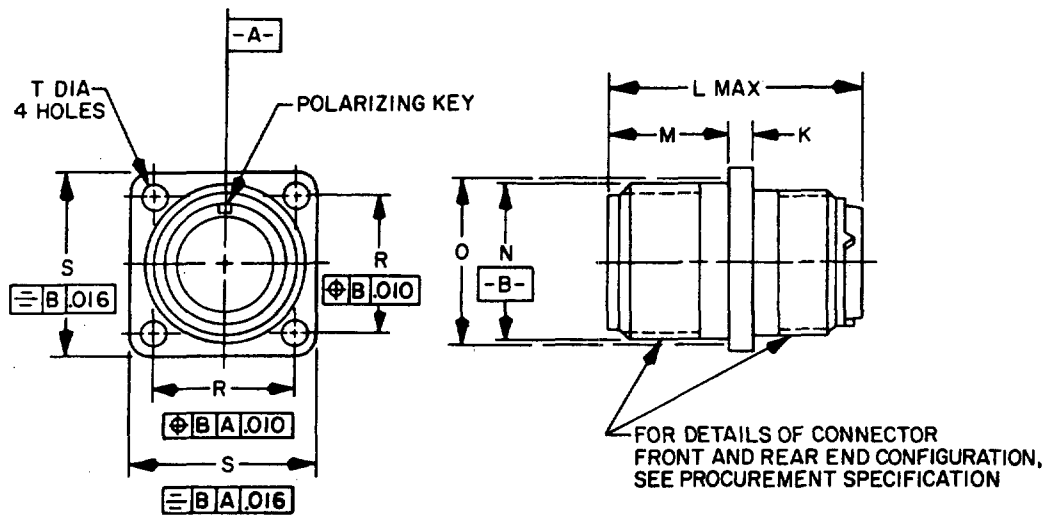


FED. SUP CLASS
5935

User activities:

Review activities:

This military standard is approved for use by Naval Air Systems Command, NAVY AS, Department of the Navy, and is available for use by all Departments and Agencies of the Department of Defense.



CLASSES D, K, L, U, W ENVIRONMENT RESISTANT

Class R cancelled after 18 Oct 71.

Class Y cancelled after 18 Feb 72.

Class K connectors with electroless nickel finish inactive for design after 25 Apr 74.

Classes L, U, and W inactive for design after 23 Mar 76.

NOTES:

1. Dimensions are in inches.
2. Unless otherwise specified, tolerance is $\pm .016$.
3. Dimensions and tolerancing in accordance with ANSI Y14.5-1973.
4. MIL-C-5015 crimp contact, front and rear release connectors and solder contact connectors are interchangeable.
5. Unless otherwise shown, corresponding features of pin and socket contact connectors are identical.
6. For insert arrangements see MIL-STD-1651.
7. Referenced documents shall be of the issue in effect on date of invitations for bid.
8. For design feature purposes, this standard takes precedence over procurement documents referenced herein.

Ⓒ

Ⓒ DENOTES CHANGES

P.A Navy - AS	International Interest	TITLE CONNECTORS, RECEPTACLE, ELECTRIC, WALL MOUNTING, FRONT RELEASE, CRIMP CONTACT, AN TYPE	MILITARY STANDARD
Other Cust			MS3400(NAVY)
Procurement Specification MIL-C-5015	SUPERSEDES:		PAGE 1 OF 6

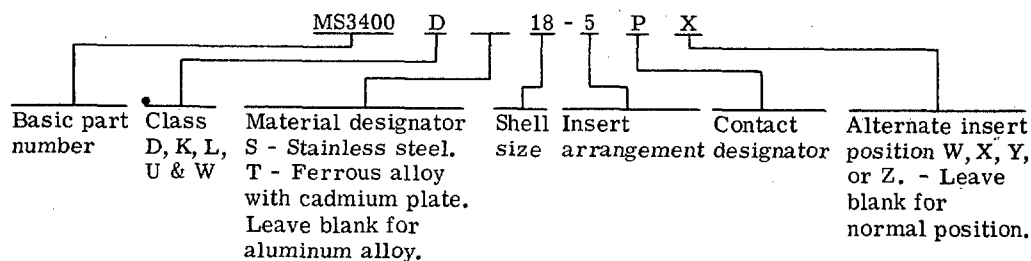
Review activities:

This military standard is approved for use by Naval Air Systems Command, NAVY AS , Department of the Navy , and is available for use by all Departments and Agencies of the Department of Defense.

FED. SUP CLASS
5935

SIZE	K ± .015	L MAX		M + .031 - .000	N + .000 - .062	O (REF) MTG. HOLE	R T. P. CL-CL	S ± .031	T +.010 -.005	
		SIZE 16 & 12 CONT'S	SIZE 8, 4 & 0 CONT'S						CLASS DLUW	CLASS K
8S	.083	2.031		.562	.532	.562	.594	.875	.120	.150
10S					.656	.688	.719	1.000		
10SL					.656	.688	.719	1.000		
12S		2.031		.562	.782	.812	.812	1.094		
12		2.125		.750	.782	.812	.812	1.094		
14S		2.031		.562	.906	.938	.906	1.188		
14		2.125		.750	.906	.938	.906	1.188		
16S		2.031		.562	1.032	1.062	.969	1.281		
16	.083	2.125	2.500	.750	1.032	1.062	.969	1.281		.150
18	.125				1.156	1.188	1.062	1.375		.177
20					1.282	1.312	1.156	1.500		
22				.750	1.406	1.438	1.250	1.625	.120	
24				.812	1.532	1.562	1.375	1.750	.147	
28				.812	1.782	1.812	1.562	2.000	.147	.177
32				.875	2.032	2.062	1.750	2.250	.173	.209
36					2.282	2.312	1.938	2.500		
40					2.532	2.562	2.188	2.750		
44					2.782	2.812	2.375	3.000		
48	.125	2.125	2.500	.875	3.032	3.062	2.625	3.250	.173	.209

EXAMPLE OF PART NO.: MS3400D 18-5PX

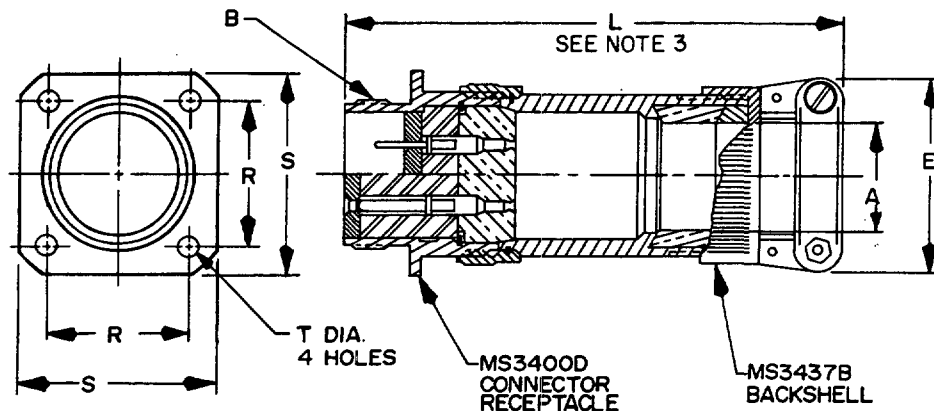


P.A Navy - AS	International interest	TITLE CONNECTORS, RECEPTACLE, ELECTRIC, WALL MOUNTING, FRONT RELEASE, CRIMP CONTACT, AN TYPE	MILITARY STANDARD
Other Cust			MS3400(NAVY)
Procurement Specification MIL-C-5015		SUPERSEDES:	PAGE 2 OF 6

REREVISED (F) Entire standard revised (G) FOR CHANGES SEE PAGES I THRU 6

7 Nov 69

APPROVED

FED. SUP CLASS
5935CLASS DJ ENVIRONMENT RESISTANT

NOTES:

1. Dimensions are in inches.
2. Unless otherwise specified, tolerance is $\pm .016$.
3. For size 8, 4 and 0 contacts, add .375 to overall length.
- ⑥ 4. Unit package shall be marked with class DJ part number only. Connector shall be marked with class D part number.
5. This assembly is available only with class D or DS connector receptacle for jacketed cable.
6. Unless otherwise shown, corresponding features of pin and socket contact connectors are identical.
7. MIL-C-5015 crimp contact, front and rear release connectors and solder contact connectors are intermateable.
8. Dimensions and tolerances in accordance with ANSI Y14.5-1973.
9. Referenced documents shall be of the issue in effect on date of invitations for bid.
10. For design feature purposes, this standard takes precedence over procurement documents referenced herein.

This military standard is approved for use by Naval Air Systems Command, NAVY AS, Department of the Navy, and is available for use by all Departments and Agencies of the Department of Defense.

User activities:

Review activities:

APPROVED 7 Nov 69 REVISED ⑥ Entire standard revised ⑥ For changes see pages 1 THRU 6

P.A Navy - AS

Other Cust

International
Interest

TITLE CONNECTORS, RECEPTACLE,
ELECTRIC, WALL MOUNTING, FRONT -
RELEASE, CRIMP CONTACT, AN TYPE

MILITARY STANDARD

MS3400(NAVY)

Procurement Specification
MIL-C-5015

SUPERSEDES:

PAGE 3 OF 6

FED. SUP. CLASS
5935

ASSEMBLY NO.	CONNECTOR RECEPTACLE NO.	BACKSHELL ASSEMBLY NO.	CABLE ENTRY		B. THIN-AD CLASS 2	E. MAX.	L. MAX.	R. +.005	S. +.021	T. A. MAX.
			MAX.	MIN.						
MS3400DJ 10AXX	MS3400D-10S-XX	MS3437B-9A	.312	.125	.625-24UNEF	.957	4.938	.719	1.000	.120
10BXX	-10S-XX	-11A	.437	.250		1.145	5.688	.719	1.000	.120
10DXX	-10S-XX	-136A	.375	.250		1.145	4.938	.719	1.000	.120
11AXX	-10SL-XX	-9A	.312	.125		.957	4.938	.719	1.000	.120
11BXX	-10SL-XX	-11A	.437	.250		1.145	5.688	.719	1.000	.120
11DXX	-10SL-XX	-136A	.375	.250	.625-24UNEF	1.145	4.938	.719	1.000	.120
13AXX	-12S-XX	-114A	.312	.125	.750-20UNEF	.957	4.938	.812	1.094	.120
13BXX	-12S-XX	-15A	.625	.350		1.332	5.688	.812	1.094	.120
13DXX	-12S-XX	-138A	.500	.350		1.332	4.938	.812	1.094	.120
13EXX	-12S-XX	-13A	.437	.250		1.145	4.938	.812	1.094	.120
12AXX	-12-XX	-114A	.312	.125		.957	4.938	.812	1.094	.120
12BXX	-12-XX	-15A	.625	.350		1.332	5.688	.812	1.094	.120
12DXX	-12-XX	-138A	.500	.350		1.332	4.938	.812	1.094	.120
12EXX	-12-XX	-13A	.437	.250	.750-20UNEF	1.145	4.938	.812	1.094	.120
15AXX	-14S-XX	-116A	.437	.250	.975-20UNEF	1.145	4.938	.906	1.188	.120
15BXX	-14S-XX	-19A	.750	.500		1.551	5.750	.906	1.188	.120
15DXX	-14S-XX	-17A	.575	.350		1.332	4.938	.906	1.188	.120
15EXX	-14S-XX	-150A	.312	.125		.957	4.938	.906	1.188	.120
14AXX	-14-XX	-116A	.437	.250		1.145	4.938	.906	1.188	.120
14BXX	-14-XX	-19A	.750	.500		1.551	5.750	.906	1.188	.120
14DXX	-14-XX	-17A	.575	.350		1.332	4.938	.906	1.188	.120
14EXX	-14-XX	-150A	.312	.125	.875-20UNEF	.957	4.938	.906	1.188	.120
17AXX	-16S-XX	-21A	.700	.500	1.000-20UNEF	1.551	5.000	.969	1.284	.120
17BXX	-16S-XX	-23A	.937	.625		1.770	5.812	.969	1.284	.120
17DXX	-16S-XX	-112A	.437	.250		1.145	4.938	.969	1.284	.120
17EXX	-16S-XX	-118A	.625	.350		1.332	4.938	.969	1.284	.120
16AXX	-16-XX	-21A	.700	.500		1.551	5.000	.969	1.284	.120
16BXX	-16-XX	-23A	.937	.625		1.770	5.812	.969	1.284	.120
16DXX	-16-XX	-112A	.437	.250		1.145	4.938	.969	1.284	.120
16EXX	-16-XX	-118A	.625	.350	1.000-20UNEF	1.332	4.938	.969	1.284	.120
18AXX	-18-XX	-25A	.625	.350	1.125-18UNEF	1.332	4.938	1.062	1.375	.120
18BXX	-18-XX	-27A	.750	.500		1.551	5.000	1.062	1.375	.120
18EXX	-18-XX	-120A	.312	.125		.957	4.938	1.062	1.375	.120
18FXX	-18-XX	-122A	.437	.250	1.125-18UNEF	1.145	4.938	1.062	1.375	.120
20AXX	-20-XX	-31A	.625	.350	1.250-18UNEF	1.332	5.938	1.156	1.500	.120
20BXX	-20-XX	-33A	.750	.500		1.551	6.000	1.156	1.500	.120
20EXX	-20-XX	-37A	1.250	.875		2.113	7.062	1.156	1.500	.120
20FXX	-20-XX	-124A	.437	.250		1.145	5.938	1.156	1.500	.120
20GXX	-20-XX	-140A	.904	.625	1.250-18UNEF	1.770	6.062	1.156	1.500	.120
22AXX	-22-XX	-39A	.625	.350	1.375-18UNEF	1.332	5.938	1.250	1.625	.120
22BXX	-22-XX	-41A	.750	.500		1.551	6.000	1.250	1.625	.120
22DXX	-22-XX	-43A	.937	.625		1.770	6.062	1.250	1.625	.120
22EXX	-22-XX	-45A	1.250	.875		2.113	7.062	1.250	1.625	.120
MS3400DJ 22FXX	MS3400D-22-XX	MS3437B-126A	.312	.125	1.375-18UNEF	.957	5.938	1.250	1.625	.120

APPROVED 7 Nov 69 REVISED (F) Entire standard revised (G) For changes see pages 1 THRU 6

P.A Navy - AS

International interest

Other Cust

TITLE CONNECTORS, RECEPTACLE, ELECTRIC, WALL MOUNTING, FRONT RELEASE, CRIMP CONTACT, AN TYPE

MILITARY STANDARD

MS3400(NAVY)

Procurement Specification
MIL-C-5015

SUPERSEDES:

PAGE 4 OF 6

FED. SUP CLASS
5935

User activities:

Review activities:

This military standard is approved for use by Naval Air Systems Command, NAVY AS, Department of the Navy, and is available for use by all Departments and Agencies of the Department of Defense.

ASSEMBLY NO.	CONNECTOR RECEPTACLE NO.	BACKSHELL ASSEMBLY NO.	CABLE ENTRY		B THREAD CLASS 2	E MAX.	L MAX.	R + .005	S + .031	T.D. MAX.
			MAX.	MIN.						
MS3400DJ 22GXX	MS3400D-22-XX	MS3437B-128A	.437	.250	1.375-18UNEF	1.145	5.938	1.250	1.625	.120
22HXX	22-XX	142A	1.029	.875	1.375-18UNEF	2.113	6.312	1.250	1.625	.120
24AXX	24-XX	47A	.750	.500	1.500-18UNEF	1.551	6.000	1.375	1.750	.147
24BXX	24-XX	49A	.812	.625		1.770	6.062	1.375	1.750	.147
24DXX	24-XX	51A	.937	.625		1.770	6.062	1.375	1.750	.147
24EXX	24-XX	53A	1.250	.875		2.113	7.062	1.375	1.750	.147
24FXX	24-XX	130A	.625	.350		1.332	5.938	1.375	1.750	.147
24GXX	24-XX	144A	1.144	.875	1.500-18UNEF	2.113	6.312	1.375	1.750	.147
28AXX	28-XX	55A	.750	.500	1.750-18UNS	1.551	6.000	1.562	2.000	.147
28BXX	28-XX	57A	.937	.625		1.770	6.062	1.562	2.000	.147
28DXX	28-XX	59A	1.250	.875		2.113	6.312	1.562	2.000	.147
28EXX	28-XX	61A	1.375	1.000	1.750-18UNS	2.363	6.438	1.562	2.000	.147
32AXX	32-XX	63A	.937	.625	2.000-18UNS	1.770	6.062	1.750	2.250	.173
32BXX	32-XX	65A	1.250	.875		2.113	6.312	1.750	2.250	.173
32DXX	32-XX	67A	1.375	1.000		2.363	6.438	1.750	2.250	.173
32FXX	32-XX	69A	1.625	1.250	2.000-18UNS	2.770	6.750	1.750	2.250	.173
36AXX	36-XX	71A	1.250	.875	2.250-16UN	2.113	7.312	1.938	2.500	.173
36BXX	36-XX	73A	1.375	1.000		2.363	7.438	1.938	2.500	.173
36DXX	36-XX	75A	1.625	1.250		2.770	7.688	1.938	2.500	.173
36EXX	36-XX	146A	1.840	1.437		3.020	7.750	1.938	2.500	.173
36FXX	36-XX	132A	.750	.500		1.551	7.000	1.938	2.500	.173
36GXX	36-XX	148A	.937	.625	2.250-16UN	1.770	7.062	1.938	2.500	.173
40AXX	40-XX	79A	1.250	.875	2.500-16UN	2.113	7.312	2.188	2.750	.173
40BXX	40-XX	81A	1.375	1.000		2.363	7.438	2.188	2.750	.173
40DXX	40-XX	83A	1.625	1.250		2.770	7.688	2.188	2.750	.173
40EXX	40-XX	85A	1.840	1.437		3.020	7.750	2.188	2.750	.173
40FXX	40-XX	134A	.750	.500	2.500-16UN	1.551	7.000	2.188	2.750	.173
44AXX	44-XX	87A	1.250	.875	2.750-16UN	2.113	7.312	2.375	3.000	.173
44BXX	44-XX	89A	1.375	1.000		2.363	7.438	2.375	3.000	.173
44DXX	44-XX	91A	1.625	1.250		2.770	7.688	2.375	3.000	.173
44EXX	44-XX	93A	1.840	1.437		3.020	7.750	2.375	3.000	.173
44FXX	44-XX	154A	.937	.625	2.750-16UN	1.770	7.062	2.375	3.000	.173
48AXX	48-XX	95A	1.250	.875	3.000-16UN	2.113	7.312	2.625	3.250	.173
48BXX	48-XX	97A	1.375	1.000		2.363	7.438	2.625	3.250	.173
48DXX	48-XX	99A	1.625	1.250		2.770	7.688	2.625	3.250	.173
MS3400DJ 48EXX	MS3400D-48-XX	MS3437B-101A	1.840	1.437	3.000-16UN	3.020	7.750	2.625	3.250	.173

P.A Navy - AS

International
Interest

Other Cust

TITLE CONNECTORS, RECEPTACLE,
ELECTRIC, WALL MOUNTING, FRONT
RELEASE, CRIMP CONTACT, AN TYPE

MILITARY STANDARD

MS3400(NAVY)

Procurement Specification
MIL-C-5015

SUPERSEDES:

PAGE 5 OF 6

User activities:

Review activities:

This military standard is approved for use by Naval Air Systems Command, NAVY AS, Department of the Navy, and is available for use by all Departments and Agencies of the Department of Defense.

FED. SUP CLASS
5935-

SUPERSESION DATA	
Buships Dwg. RE49D2039 Part number	Superseded by Part number
10-214010-*	MS3400DJ10A**
011-*	11A**
012-*	13A**
013-*	12A**
014-*	15A**
015-*	14A**
016-*	17E**
017-*	16E**
018-*	18A**
020-*	20B**
022-*	22B**
024-*	24D**
028-*	28B**
032-*	32B**
036-*	36B**
040-*	40D**
10-214044-*	MS3400DJ44E**

(G)

EXAMPLE OF PART NO.: MS3400DJ 18A11PY

MS3400	DJ	18	A	11	P	Y	
Basic part number	Class DJ	Material designator S - Stainless steel. size Leave blank for aluminum alloy.	Shell size	Designator for sealing arrangement range of MS3437 backshell.	Insert	Contact	Alternate insert position W, X, Y, and Z. - Leave blank for normal position.

APPROVED 7 Nov 69 REVISED (F) Entire standard revised (G) For changes see pages 1 THRU 6

P.A Navy - AS Other Cust	International interest	TITLE CONNECTORS, RECEPTACLE, ELECTRIC, WALL MOUNTING, FRONT RELEASE, CRIMP CONTACT, AN TYPE	MILITARY STANDARD MS3400(NAVY)
Procurement Specification MIL-C-5015	SUPERSEDES:		PAGE 6 OF 6

DD FORM 672 (Limited coordinated) PREVIOUS EDITIONS OF THIS FORM ARE OBSOLETE.
1 MAY 73