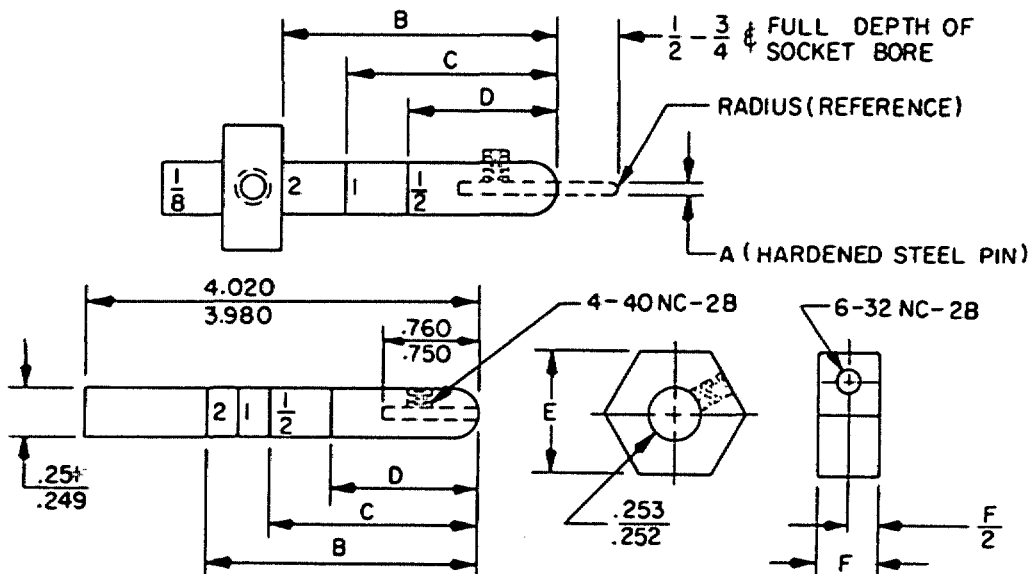


FED. SUP CLASS  
5935User activities: Army ME, AT  
Navy MC  
Air ForceReviewer activities: Army MI, MU, AV, WC  
Navy SH, EC, OS  
Air Force II, 85  
DSA-E3

This military standard is mandatory for use by all Departments and Agencies of the Department of Defense. Selection for all new engineering and design applications and for repetitive use shall be made from this document.



TORQUE ARM

WEIGHT

Part number	Mating end size	Bending moment in lbs $\pm 10\%$	A $\pm .0005(.01)$	B $\pm .010(.25)$	C $\pm .010(.25)$	D $\pm .010(.25)$	E bar stock	F $\pm .001(.03)$
MS3321-24	24	1/8	.0250 (.64)					
MS3321-23	23	1/8	.0270 (.69)					
MS3321-22	22	1/8	.0300 (.76)					
MS3321-20	20	1/2	.0400 (1.02)			1.015 (25.78)	1.00 (25.40)	1.000 (25.40)
MS3321	-	1			3.011 (76.48)		1.00 (25.40)	1.000 (25.40)
MS3321-16	16	2	.0625 (1.59)	3.000 (76.20)			1.50 (38.10)	.931 (23.65)
MS3321-12	12	2	.0940 (2.39)	3.000 (76.20)			1.50 (38.10)	.931 (23.65)

\*Not established

INCHES	MM
.249	6.32
.251	6.38
.252	6.40
.253	6.43
.750	19.05
.760	19.30
3.980	101.09
4.020	102.11

## NOTES:

- Dimensions are in inches.
- Millimeters are in parentheses.
- Metric equivalents (to the nearest .01 mm) are given for general information only and are based upon 1 inch = 25.4 mm.
- Material: Steel pin to be polished and free of all nicks and burrs. Screws: Steel or brass. Torque arm and weight: Brass.
- Referenced documents shall be of the issue in effect on date of invitation for bid.
- For design feature purposes this standard takes precedence over procurement documents referenced herein.

P.A. NAVY - AS	International interest	TITLE TEST FIXTURE, PROBE DAMAGE, SOCKET CONTACT, CONNECTOR, ELECTRIC	MILITARY STANDARD
Other Cust ARMY - EL AF - 17			MS 3321
Procurement Specification NONE		SUPERSEDES:	SHEET   OF

DD FORM 10 APR 64 672 (Coordinated) PREVIOUS EDITIONS OF THIS FORM ARE OBSOLETE.

5935-1646-39

APPROVED 1 MAY 68 REVISED 5 JUNE 1970