



## MS3190G

Inches	mm	Inches	mm
.003	.076	.093	2.362
.005	.127	.104	2.642
.010	.254	.106	2.692
.072	1.829	.110	2.794
.078	1.981	.116	2.946
.091	2.311		

Barrel size	Wire range	A	B	C	D dia
A20	20-22-24	.308 (7.823) .304 (7.722)	.063 (1.600) .057 (1.448)	.033 (.838) .029 (.736)	.032 (.813) .026 (.660)

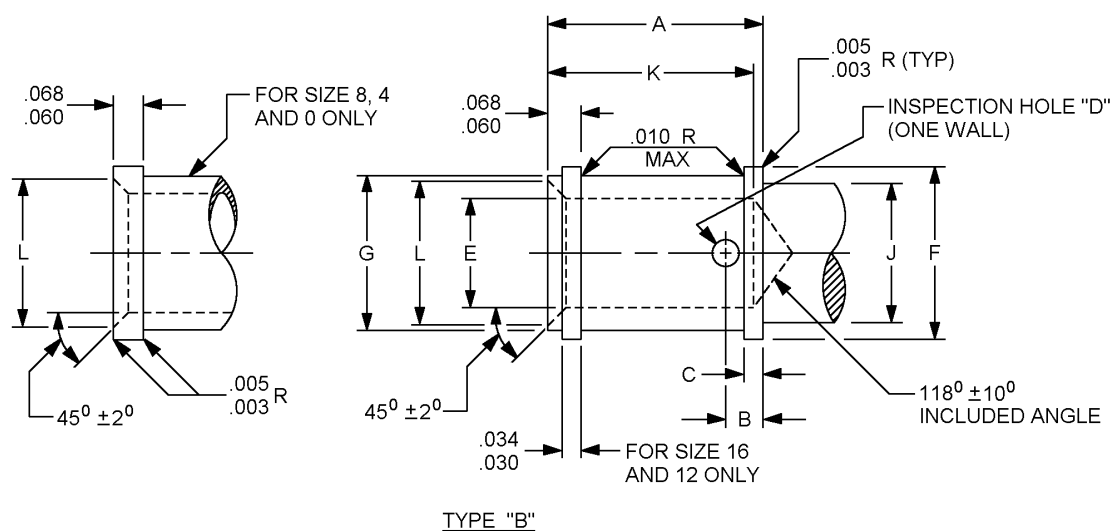
Barrel size	Wire range	E dia	F dia	G dia	J dia max	K
A20	20-22-24	.050 (1.270) .048 (1.219)	.106 (2.692) .098 (2.489)	.078 (1.981) .076 (1.930)	.082 (2.083)	.299 (7.595) .267 (6.782)

## NOTES:

1. Material, finish, and machined surfaces shall be as specified on the applicable procurement specification for the contact.
2. Dimensions are in inches unless otherwise specified.
3. All dimensions shown are for finished part after plating.
4. All diameters shall be concentric with each other within .005 total indicator reading (TIR).
5. See MIL-DTL-22520, MIL-C-22909 and MIL-C-39029 for the applicable crimping tool and the performance requirements of the crimped termination.
6. Finished parts shall have no sharp edges or burrs.

FIGURE 1. Dimensions and configurations, type A - Continued.

## MS3190G



Inches	mm	Inches	mm
.003	.076	.034	.864
.005	.127	.060	1.524
.010	.254	.068	1.727
.030	.762		

FIGURE 2. Dimensions and configurations, type B.

## MS3190G

Barrel size	Wire range	A	B	C	D dia	E dia
16	16–18–20	.345 (8.763) .341 (8.661)	.079 (2.007) .073 (1.854)	.048 (1.219) .044 (1.118)	.042 (1.067) .036 (.914)	.058 (1.473) .066 (1.676)
12	12 – 14	.345 (8.763) .341 (8.661)	.079 (2.007) .073 (1.854)	.048 (1.219) .044 (1.118)	.042 (1.067) .036 (.914)	.102 (2.591) .098 (2.489)
8	8	.520 (13.208) .510 (12.954)	.094 (2.388) .084 (2.134)	.048 (1.219) .044 (1.118)	.066 (1.676) .060 (1.524)	.184 (4.674) .179 (4.546)
4	4	.520 (13.208) .510 (12.954)	.094 (2.388) .084 (2.134)	.048 (1.219) .044 (1.118)	.066 (1.676) .060 (1.524)	.256 (6.502) .279 (7.086)
0	0	.675 (17.145) .665 (16.891)	.094 (2.388) .084 (2.134)	.048 (1.219) .044 (1.118)	.066 (1.676) .060 (1.524)	.458 (11.633) .451 (11.455)

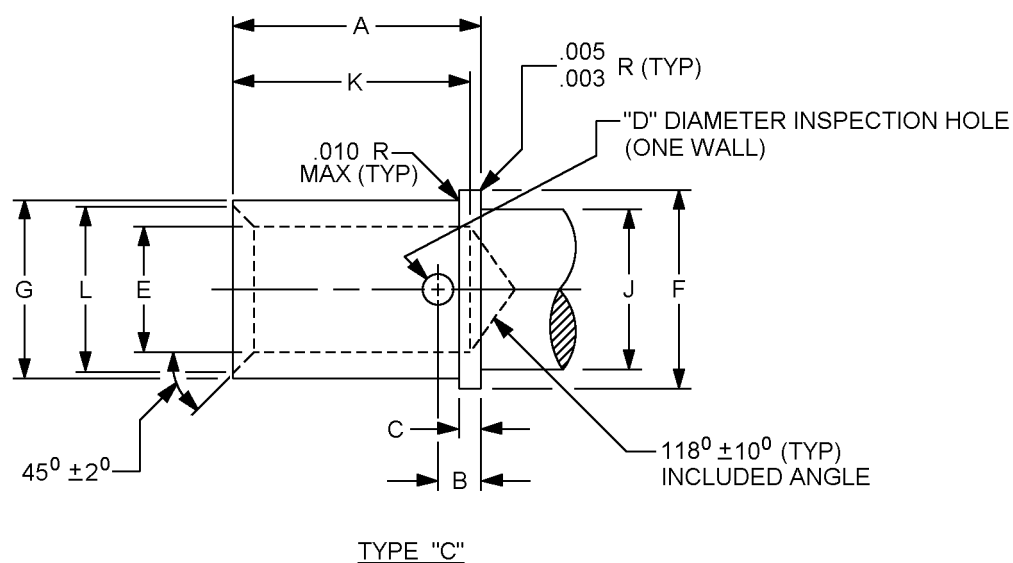
Barrel size	Wire range	F dia	G dia	J dia max	K	L dia
16	16–18–20	.148 (3.760) .144 (3.658)	.105 (2.667) .101 (2.565)	.123 (3.124)	.328 (8.331) .297 (7.544)	.090 (2.286) .080 (2.032)
12	12 – 14	.202 (5.131) .198 (5.030)	.153 (3.886) .147 (3.734)	.171 (4.343)	.328 (8.331) .297 (7.544)	.125 (3.175) .115 (2.921)
8	8	.313 (7.950) .303 (7.696)	.269 (6.833) .263 (6.680)	.257 (6.528)	.534 (13.564) .480 (12.192)	.230 (5.842) .220 (5.588)
4	4	.419 (10.643) .415 (10.541)	.380 (9.652) .370 (9.398)	.376 (9.550)	.534 (13.564) .480 (12.192)	.364 (9.245) .354 (8.991)
0	0	.611 (15.520) .607 (15.412)	.568 (14.427) .558 (14.173)	.548 (13.919)	.690 (17.526) .636 (16.154)	.542 (13.767) .532 (13.513)

## NOTES:

1. Material, finish, and machined surfaces shall be as specified on the applicable procurement specification for the contact.
2. Dimensions are in inches unless otherwise specified.
3. All dimensions shown are for finished part after plating.
4. All diameters shall be concentric with each other within .005 total indicator reading (TIR).
5. See MIL-DTL-22520, MIL-C-22909 and MIL-C-39029 for the applicable crimping tool and the performance requirements of the crimped termination.
6. Finished parts shall have no sharp edges or burrs.

FIGURE 2. Dimensions and configurations, type B - Continued.

MS3190G



Inches	mm
.003	.076
.005	.127
.010	.254

FIGURE 3. Dimensions and configurations, type C.

## MS3190G

Barrel size	Wire range	A	B	C	D dia	E dia
20	20 - 22 - 24	.298 (7.570) .294 (7.468)	.063 (1.600) .057 (1.448)	.033 (.838) .029 (.737)	.032 (.813) .026 (.660)	.050 (1.270) .048 (1.219)
16	16 - 18 - 20	.298 (7.570) .294 (7.468)	.079 (2.007) .073 (1.854)	.048 (1.219) .044 (1.118)	.042 (1.067) .036 (.914)	.068 (1.727) .066 (1.676)
12	12 - 14	.298 (7.570) .294 (7.468)	.079 (2.007) .073 (1.854)	.048 (1.219) .044 (1.118)	.042 (1.067) .036 (.914)	.102 (2.591) .098 (2.489)
8	8	.520 (13.208) .510 (12.954)	.094 (2.388) .084 (2.134)	.048 (1.219) .044 (1.118)	.066 (1.676) .060 (1.524)	.184 (4.674) .179 (4.547)
4	4	.520 (13.208) .510 (12.954)	.094 (2.388) .084 (2.134)	.048 (1.219) .044 (1.118)	.066 (1.676) .060 (1.524)	.285 (7.240) .279 (7.087)
0	0	.675 (17.145) .665 (16.891)	.094 (2.388) .084 (2.134)	.048 (1.219) .044 (1.118)	.066 (1.676) .060 (1.524)	.458 (11.633) .451 (11.455)

Barrel size	Wire range	F dia	G dia	J dia max	K	L dia
20	20 - 22 - 24	.106 (2.692) .098 (2.489)	.078 (1.981) .076 (1.930)	.082 (2.083)	.270 (6.858) .250 (6.350)	.064 (1.626) .060 (1.524)
16	16 - 18 - 20	.148 (3.760) .133 (3.378)	.105 (2.667) .101 (2.565)	.123 (3.124)	.281 (7.137) .250 (6.350)	.090 (2.286) .080 (2.032)
12	12 - 14	.202 (5.131) .189 (4.800)	.153 (3.886) .147 (3.734)	.171 (4.343)	.281 (7.137) .250 (6.350)	.125 (3.175) .115 (2.921)
8	8	.313 (7.950) .309 (7.849)	.269 (6.833) .263 (6.680)	.257 (6.528)	.534 (13.564) .480 (12.192)	.230 (5.842) .220 (5.588)
4	4	.419 (10.643) .409 (10.388)	.380 (9.652) .370 (9.398)	.376 (9.550)	.534 (13.564) .480 (12.192)	.364 (9.245) .354 (8.991)
0	0	.611 (15.520) .601 (15.265)	.568 (14.427) .558 (14.173)	.548 (13.920)	.690 (17.526) .636 (16.154)	.542 (13.767) .532 (13.513)

## NOTES:

1. Material, finish, and machined surfaces shall be as specified on the applicable procurement specification for the contact.
2. Dimensions are in inches unless otherwise specified.
3. All dimensions shown are for finished part after plating.
4. All diameters shall be concentric with each other within .005 total indicator reading (TIR).
5. See MIL-DTL-22520, MIL-C-22909 and MIL-C-39029 for the applicable crimping tool and the performance requirements of the crimped termination.
6. Finished parts shall have no sharp edges or burrs.

FIGURE 3. Dimensions and configurations, type C - Continued.

## MS3190G

### Requirements:

Design and construction: See figures 1, 2, and 3.

Changes from previous issue. Marginal notations are not used in this revision to identify changes with respect to the previous issue due to the extent of the changes.

Reference documents. This document references the following:

MIL-DTL-22520

MIL-C-22909

MIL-C-39029

## CONCLUDING MATERIAL

### Custodians:

Army - CR

Navy - AS

Air Force - 11

DLA - CC

### Preparing activity:

DLA - CC

(Project 5935-4419-029)

### Review activities:

Army - AR, CR4, MI

Navy - MC

Air Force - 19

NOTE: The activities listed above were interested in this document as of the date of this document. Since organizations and responsibilities can change, you should verify the currency of the information above using the ASSIST Online database at <http://www.dodssp.daps.mil>.