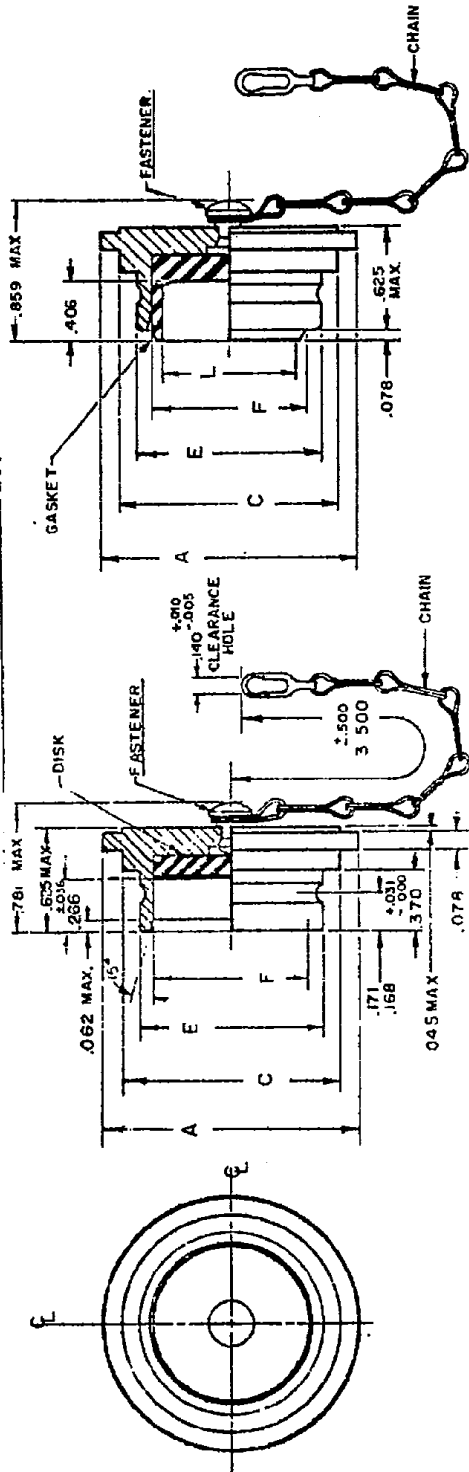


FED. SUP CLASS  
5935



STYLE A FOR USE WITH SOCKET CONTACT PLUGS  
STYLE B FOR USE WITH PIN CONTACT PLUGS

| SHELL SIZE | A<br>MAX DIA.<br>FLANGE | C<br>MAX. DIA.<br>FRONT | E<br>+ .006<br>- .004<br>SHELL O.D. | F<br>+ .003<br>- .007<br>SHELL I.D. | L<br>INSERT<br>I.D. |
|------------|-------------------------|-------------------------|-------------------------------------|-------------------------------------|---------------------|
| -3         | .750                    | .578                    | .435                                | .364                                | .262                |
| -7         | .906                    | .703                    | .570                                | .480                                | .354                |
| -12        | 1.053                   | .828                    | .704                                | .621                                | .490                |
| -19        | 1.219                   | 1.016                   | .843                                | .760                                | .625                |
| -27        | 1.374                   | 1.172                   | .998                                | .918                                | .781                |
| -37        | 1.531                   | 1.266                   | 1.120                               | 1.037                               | .900                |

MATERIAL: COVER - ALUMINUM ALLOY CONFORMING TO MIL-C-26482.  
CHAIN - STAINLESS STEEL PASSIVATED - CONFORMING TO NAS1455-00.  
GASKET - SYNTHETIC RUBBER - MIL-STD-417 55:10 DUROMETER  
DISK - CLOSED CELL NEOPRENE SPONGE PER MIL-C-3133 CLASS SB OR SC.

EXAMPLE OF PART NO. MS3182 E 19 A  
MS NUMBER CLASS SIZE STYLE A FOR USE WITH SOCKET CONTACT PLUGS.  
STYLE B FOR USE WITH PIN CONTACT PLUGS.

DIMENSIONS IN INCHES. UNLESS OTHERWISE SPECIFIED, TOLERANCE: DECIMALS ±.016, ANGLES ±1/2.  
THIS STANDARD TAKES PRECEDENCE OVER DOCUMENTS REFERENCED HEREIN.  
REFERENCED DOCUMENTS SHALL BE OF THE ISSUE IN EFFECT OR DATE OF INVITATION FOR BIDS.

APPROVED 25 Apr 61 REVISED 10 Sept 62 25 Jun 65 21 JULY 1971

This military standard is approved by the Department of Defense and is mandatory for use by all Departments & Agencies of the Department of Defense. Selection for all new engineering and design applications and for repetitive use shall be made from this document.

|  |                        |  |                   |
|--|------------------------|--|-------------------|
| P.A. NAVY-AS<br>Other Cust<br>USAF-11<br>ARMY-EL<br>Procurement Specification<br>MIL-C-81703 | International Interest | TITLE  | MILITARY STANDARD |
|  |                        | COVER, PROTECTIVE, ELECTRIC CONNECTOR, PLUG,<br>PUSH-PULL COUPLING | MS3182            |
| SUPERSEDES:  |                        |  | SHEET 1 OF 1      |