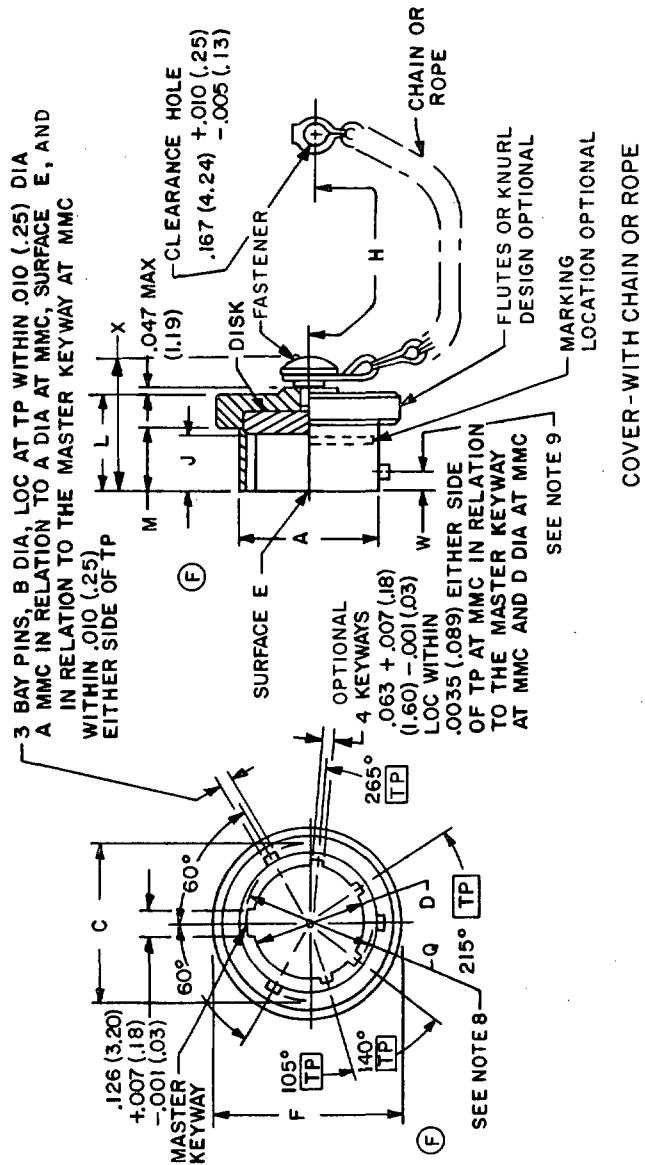


User activities: Army - AV, ME  
Navy - SH, MC  
Air Force - 11

Review activities: Army - AR, MI  
Navy - EC  
Air Force - 99

This military standard is approved for use by all Departments and Agencies of the Department of Defense. Selection for all new engineering and design applications and for repetitive use shall be made from this document when applicable.



COVER-WITH CHAIN OR ROPE

(F) Requisitions for covers without chain will be filled with covers with rope. For design feature purposes, this standard takes precedence over procurement documents referenced herein. Referenced documents shall be of the issue in effect on date of invitations for bid.

(F) DENOTES CHANGES

P.A Navy - AS  Other Cust USAF - 85 Army - CR	International interest	TITLE COVER, PROTECTIVE, ELECTRICAL CONNECTOR PLUG, BAYONET COUPLING FOR MIL-C-26482 CONNECTORS	MILITARY STANDARD
		SUPERSEDES:	MS3180
Procurement Specification MIL-C-26482			PAGE 1 OF 2

APPROVED 25 Apr 61 REVISED (A) 10 Sep 62 (B) 15 Feb 67 (C) 29 May 68 (D) 19 Aug 70 (E) 1 Dec 77 (E) 8 JUL 1980  
 FED. SUP CLASS 5935

Review activities: Army - AR, MI  
Navy - EC  
Air Force - 99

User activities: Army - AV, ME  
Navy - SH, MC  
Air Force - 11

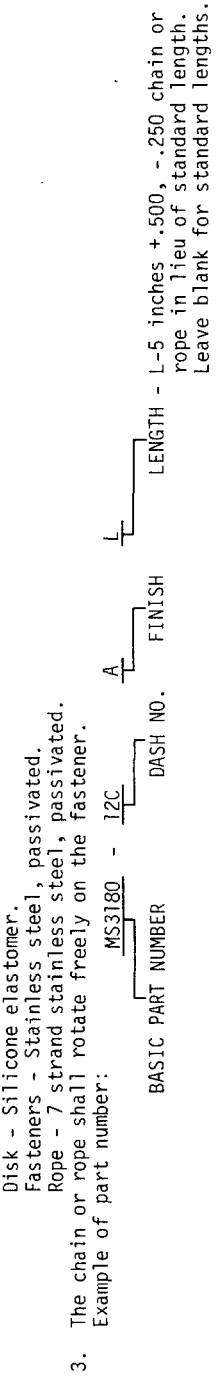
This military standard is approved for use by all Departments and Agencies of the Department of Defense. Selection for all new engineering and design applications and for repetitive use shall be made from this document when applicable.

DASH NO. (WITH CHAIN)		A	B	C	D	F	H	J	L	M	Q	W	X
DASH NO. (WITH ROPE)		A	B	C	D	F	H	J	L	M	Q	W	X
-8C	-8R	+ .001 (.03) DIA	+ .006 (.15) BAY PIN	+ .000 (.00) OVER BAY PINS	+ .005 (.13) DIA	.719 (18.26) OVERALL	+ .500 (12.70) STD. CHAIN/ROPE LENGTH	+ .010 (.25) DISK LOC.	MAX LENGTH	+ .031 (.25) SHLDR LOC.	+ .005 (.13) OVER KWYS	PIN LOC.	MAX OVERALL LENGTH
-10C	-10R	+ .001 (.03) DIA	+ .006 (.15) BAY PIN	+ .000 (.00) OVER BAY PINS	+ .005 (.13) DIA	.719 (18.26) OVERALL	+ .500 (12.70) STD. CHAIN/ROPE LENGTH	+ .010 (.25) DISK LOC.	MAX LENGTH	+ .031 (.25) SHLDR LOC.	+ .005 (.13) OVER KWYS	PIN LOC.	MAX OVERALL LENGTH
-12C	-12R	+ .001 (.03) DIA	+ .006 (.15) BAY PIN	+ .000 (.00) OVER BAY PINS	+ .005 (.13) DIA	.719 (18.26) OVERALL	+ .500 (12.70) STD. CHAIN/ROPE LENGTH	+ .010 (.25) DISK LOC.	MAX LENGTH	+ .031 (.25) SHLDR LOC.	+ .005 (.13) OVER KWYS	PIN LOC.	MAX OVERALL LENGTH
-14C	-14R	+ .001 (.03) DIA	+ .006 (.15) BAY PIN	+ .000 (.00) OVER BAY PINS	+ .005 (.13) DIA	.719 (18.26) OVERALL	+ .500 (12.70) STD. CHAIN/ROPE LENGTH	+ .010 (.25) DISK LOC.	MAX LENGTH	+ .031 (.25) SHLDR LOC.	+ .005 (.13) OVER KWYS	PIN LOC.	MAX OVERALL LENGTH
-16C	-16R	+ .001 (.03) DIA	+ .006 (.15) BAY PIN	+ .000 (.00) OVER BAY PINS	+ .005 (.13) DIA	.719 (18.26) OVERALL	+ .500 (12.70) STD. CHAIN/ROPE LENGTH	+ .010 (.25) DISK LOC.	MAX LENGTH	+ .031 (.25) SHLDR LOC.	+ .005 (.13) OVER KWYS	PIN LOC.	MAX OVERALL LENGTH
-18C	-18R	+ .001 (.03) DIA	+ .006 (.15) BAY PIN	+ .000 (.00) OVER BAY PINS	+ .005 (.13) DIA	.719 (18.26) OVERALL	+ .500 (12.70) STD. CHAIN/ROPE LENGTH	+ .010 (.25) DISK LOC.	MAX LENGTH	+ .031 (.25) SHLDR LOC.	+ .005 (.13) OVER KWYS	PIN LOC.	MAX OVERALL LENGTH
-20C	-20R	+ .001 (.03) DIA	+ .006 (.15) BAY PIN	+ .000 (.00) OVER BAY PINS	+ .005 (.13) DIA	.719 (18.26) OVERALL	+ .500 (12.70) STD. CHAIN/ROPE LENGTH	+ .010 (.25) DISK LOC.	MAX LENGTH	+ .031 (.25) SHLDR LOC.	+ .005 (.13) OVER KWYS	PIN LOC.	MAX OVERALL LENGTH
-22C	-22R	+ .001 (.03) DIA	+ .006 (.15) BAY PIN	+ .000 (.00) OVER BAY PINS	+ .005 (.13) DIA	.719 (18.26) OVERALL	+ .500 (12.70) STD. CHAIN/ROPE LENGTH	+ .010 (.25) DISK LOC.	MAX LENGTH	+ .031 (.25) SHLDR LOC.	+ .005 (.13) OVER KWYS	PIN LOC.	MAX OVERALL LENGTH
-24C	-24R	+ .001 (.03) DIA	+ .006 (.15) BAY PIN	+ .000 (.00) OVER BAY PINS	+ .005 (.13) DIA	.719 (18.26) OVERALL	+ .500 (12.70) STD. CHAIN/ROPE LENGTH	+ .010 (.25) DISK LOC.	MAX LENGTH	+ .031 (.25) SHLDR LOC.	+ .005 (.13) OVER KWYS	PIN LOC.	MAX OVERALL LENGTH

FED. SUP CLASS  
5935

NOTES:  
1. Unless otherwise specified, dimensions in inches. Dimensioning and tolerancing in accordance with ANSI Y-14.5-1973.  
2. Materials: Cover - Aluminum alloy: Bayonet pins (B dia) stainless steel, passivated.  
Chain - Stainless steel, passivated in accordance with RR-C-271, type II, class 3.  
Disk - Silicone elastomer.  
Fasteners - Stainless steel, passivated.  
Rope - 7 strand stainless steel, passivated.

3. The chain or rope shall rotate freely on the fastener.  
Example of part number: MS3180 - 12C



4. Finish - A-hard, anodic, non-conductive in accordance with MIL-A-8625, type III, .0008 inch minimum thickness.  
5. This cover must meet the fluid resistance requirements of MIL-C-26482, series 1 and 2 connectors.  
6. Metric equivalents are given for general information only and are based upon 1.00 inch = 25.4 mm.  
7. Metric equivalents are in parentheses.  
8. When keyways are not used the inside diameter shall be Q, not D.  
9. Values applies to "W" dimension are true position.

P.A Navy - AS	International interest	TITLE COVER, PROTECTIVE, ELECTRICAL CONNECTOR PLUG, BAYONET COUPLING FOR MIL-C-26482 CONNECTORS	MILITARY STANDARD
Other Cust USAF - 85 Army - CR			MS3180
Procurement Specification MIL-C-26482	SUPERSEDES:		PAGE 2 OF 2

APPROVED 25 Apr 61 REVISED 8 JUL 1980 For changes see pages 1 and 2