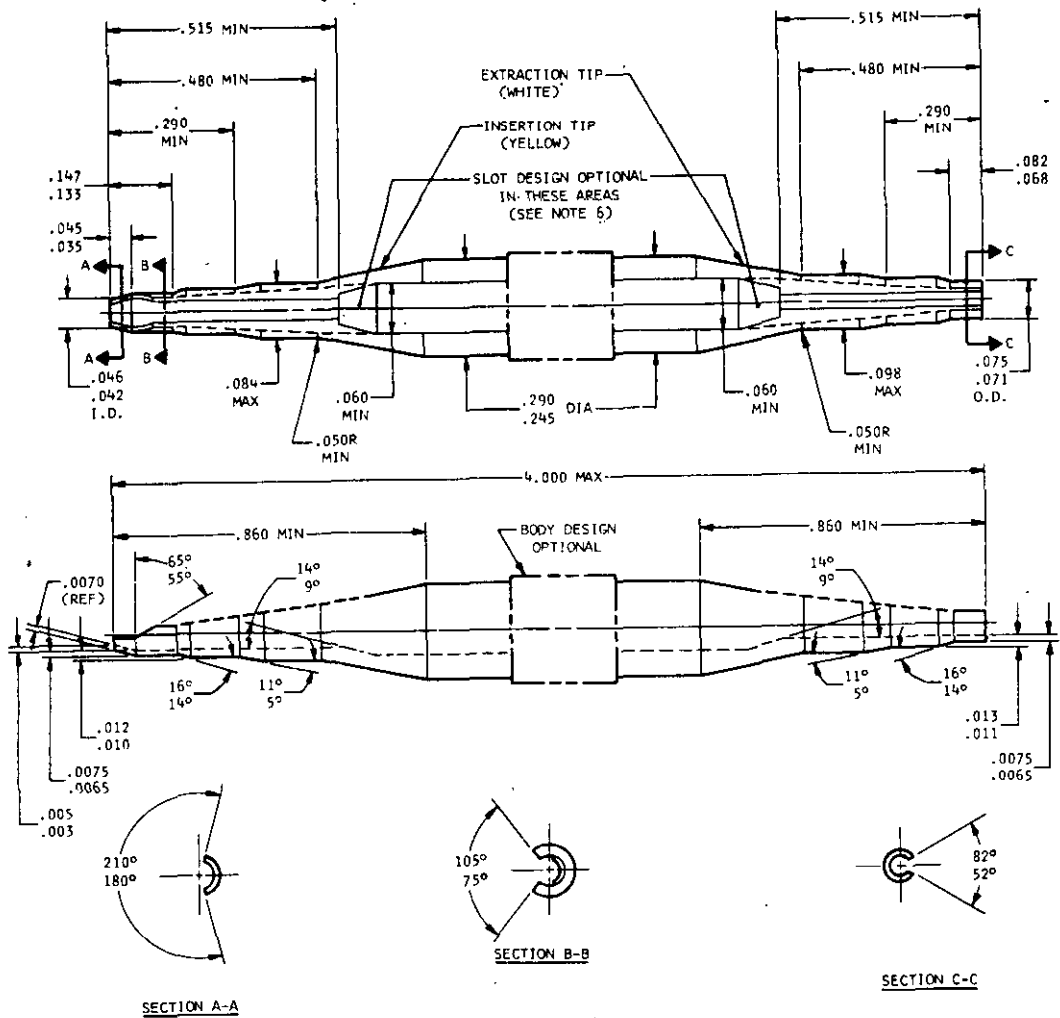


Reviewer symbols:
Navy - EC



PART NO.	USE WITH CONTACTS
-22	M39029/15-22-28
	M39029/15-22-22
	M39029/16-23-28
	M39029/16-23-22
	M39029/17-23-28
	M39029/17-23-22
	M39029/18-23-28
	M39029/18-23-22

(A) CANCELED AFTER
20 JUNE 1979
USE MIL-I-81969/16

NOTES:

1. MATERIAL: INSERTION AND EXTRACTION TIP MOLDED ACETAL OR POLYAMIDE PLASTIC OR EQUIVALENT.
2. DIMENSIONS IN INCHES UNLESS OTHERWISE SPECIFIED.
3. THE INSERTION AND EXTRACTION TIPS SHALL BE IDENTIFIED WITH THE WORD "INSERT" OR "EXTRACT", AS APPLICABLE, CLEARLY IMPRINTED ON THE OUTER SURFACE OF TIP.
4. PLASTIC TIPS MUST BE SMOOTH AND FREE FROM BURRS AND SHARP EDGES.
5. PART NUMBERS, INCLUDING DASH NUMBERS, SHALL BE PERMANENTLY MARKED ON THE SIDE OF TOOL BODY.
6. SLOT DESIGN SHALL ALLOW ALL APPLICABLE WIRE SIZES TO SNAP INTO TOOL FREELY.

This standard has been approved by the Department of the Navy and is mandatory for use by that activity. All other military activities are required to employ this standard where suitable.

P.A. Navy - AS
Other Cust

TITLE

TOOL, INSERT-EXTRACT, ELECTRIC CONNECTOR, SIZE 22,20,16 AND 12

MILITARY STANDARD

MS 3160 (NAVY)

PROCUREMENT SPECIFICATION

SUPERSEDES:

SHEET 1 OF 6