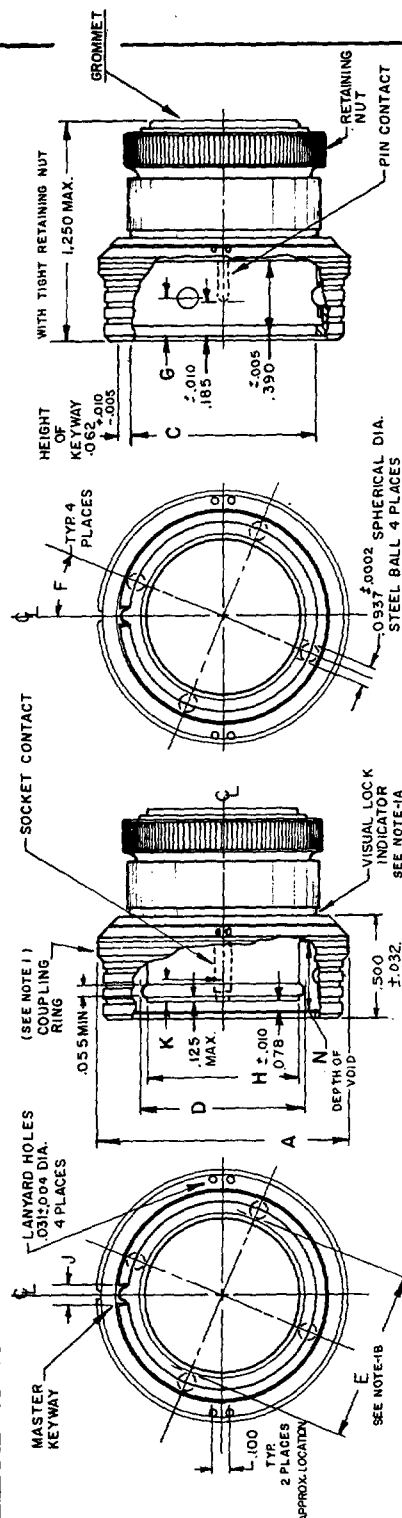


FED. SUP CLASS
5935



STYLE P (PIN INSERT)

CLASS E

STYLE S (SOCKET INSERT)

SHELL SIZE	A MAX. DIA. COUPLING RING	C MIN I.O. SHELL	D AVERAGE DIA. INSERT SEAL	E MIN. DIA. BALL SPACING	F BALL LOCATION (ANGULAR)	G BALL LOCATION (DEPTH)	H FRONT O.D. INSERT	J MAX WIDTH OF KEYWAY	N J.031 DEPTH OF VOID	K POINT OF SPRING CONTACT	FOR INSERT ARRANGEMENT SEE DWG.
- 3	.796	.444	.374	.391	30°		.344		IN	138 MAX MEASURE WITH	MS 33698
- 7	.933	.579	.490	.526			.460		DISENGAGED	SQUARE	MS 33699
-12	1.140	.713	.630	.661			.600	.114	POSITION	NOSE PIN	MS 33700
-19	1.228	.852	.770	.799	22 1/2°	.202	.740		HAVING	BASIC	MS 33701
-27	1.385	1.007	.925	.954			.895		.310	DIAMETER OF	MS 33702
-37	1.513	1.127	1.047	1.076			1.017			MATING CONTACT	MS 33703

DIMENSIONS IN INCHES, UNLESS OTHERWISE SPECIFIED,
TOLERANCE: DECIMALS $\pm .016$, ANGULAR TOLERANCE $\pm 1/2^\circ$

NOTES

THIS POSITION SHALL ONLY BE POSSIBLE WHEN ENGAGED

TO THE RECEP-TACLE.

IN THE NORMAL DISENGAGED POSITION THE FOLLOWING

A. THE VISUAL LOCK INDICATOR IS NOT IN VIEW.

B. THE BALLS ARE RELEASED WHEN "E" MIN. EQUALS "C".

EXAMPLE OF PART NO. MS3137 E 19-50 S Y.

M'S NUMBER	CLASS	SIZE	INSERT ARRANGEMENT	CONTACT STYLE	ALTERNATE INSERT POSITION
1	1	1	1	1	1
2	2	2	2	2	2
3	3	3	3	3	3
4	4	4	4	4	4
5	5	5	5	5	5
6	6	6	6	6	6
7	7	7	7	7	7
8	8	8	8	8	8
9	9	9	9	9	9
10	10	10	10	10	10
11	11	11	11	11	11
12	12	12	12	12	12
13	13	13	13	13	13
14	14	14	14	14	14
15	15	15	15	15	15
16	16	16	16	16	16
17	17	17	17	17	17
18	18	18	18	18	18
19	19	19	19	19	19
20	20	20	20	20	20
21	21	21	21	21	21
22	22	22	22	22	22
23	23	23	23	23	23
24	24	24	24	24	24
25	25	25	25	25	25
26	26	26	26	26	26
27	27	27	27	27	27
28	28	28	28	28	28
29	29	29	29	29	29
30	30	30	30	30	30
31	31	31	31	31	31
32	32	32	32	32	32
33	33	33	33	33	33
34	34	34	34	34	34
35	35	35	35	35	35
36	36	36	36	36	36
37	37	37	37	37	37
38	38	38	38	38	38
39	39	39	39	39	39
40	40	40	40	40	40
41	41	41	41	41	41
42	42	42	42	42	42
43	43	43	43	43	43
44	44	44	44	44	44
45	45	45	45	45	45
46	46	46	46	46	46
47	47	47	47	47	47
48	48	48	48	48	48
49	49	49	49	49	49
50	50	50	50	50	50
51	51	51	51	51	51
52	52	52	52	52	52
53	53	53	53	53	53
54	54	54	54	54	54
55	55	55	55	55	55
56	56	56	56	56	56
57	57	57	57	57	57
58	58	58	58	58	58
59	59	59	59	59	59
60	60	60	60	60	60
61	61	61	61	61	61
62	62	62	62	62	62
63	63	63	63	63	63
64	64	64	64	64	64
65	65	65	65	65	65
66	66	66	66	66	66
67	67	67	67	67	67
68	68	68	68	68	68
69	69	69	69	69	69
70	70	70	70	70	70
71	71	71	71	71	71
72	72	72	72	72	72
73	73	73	73	73	73
74	74	74	74	74	74

THIS STANDARD TAKES PRECEDENCE OVER DOCUMENTS REFERENCED HEREIN. REFERENCED DOCUMENTS SHALL BE OF THE ISSUE IN EFFECT ON DATE OF INVITATION FOR BID.

This military standard is approved by the Department of Defense and is mandatory for use by all Departments & Agencies of the Department of Defense. Selection for all new engineering and design applications and for repetitive use shall be made from this document.

P.A. NAVY-AS

Other Cust
ARMY-EL

Procurement Specification
MIL-C-81703

International
interest

TITLE

CONNECTOR, PLUG, ELECTRIC, SOLDER TYPE,
PUSH-PULL COUPLING
MES 1 (CLASS E, P AND J)

SUPERSEDES:

MILITARY STANDARD

MS 3137

SHEET 1 OF 2

DD FORM 672
10 APR 64

(Coorazm ...) PREVIOUS EDITIONS OF THIS FORM ARE OBSOLETE.

5935-1761-4

21 JULY 1971

20 JAN 1969

6 Mar 67 (D)

OV 1965 ©

62 8

10 SEP

REVISÉ

4 MAY 59

This military standard is approved by the Department of Defense and is mandatory for use by all Departments & Agencies of the Department of Defense. Its use is required for all engineering and design applications and for repetitive use shall be made from this document.

P.A. NAVY-AS

Other Cust
ARMY-EL

Procurement Specification
MIL-C-81703

International
Interest

TITLE

CONNECTOR, PLUG, ELECTRIC, SOLDER TYPE,
PUSH-PULL COUPLING
SERIES I (CLASS E P AND J)

SUPERSEDES:

MILITARY STANDARD

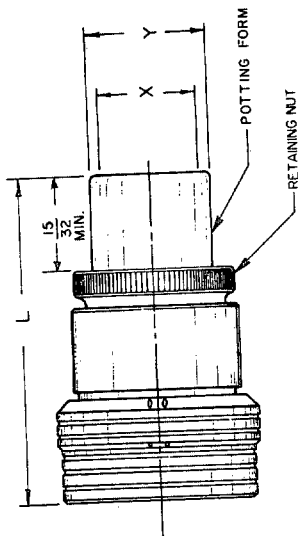
MS3137

SHEET 2

CLASS P

POTTED SEAL

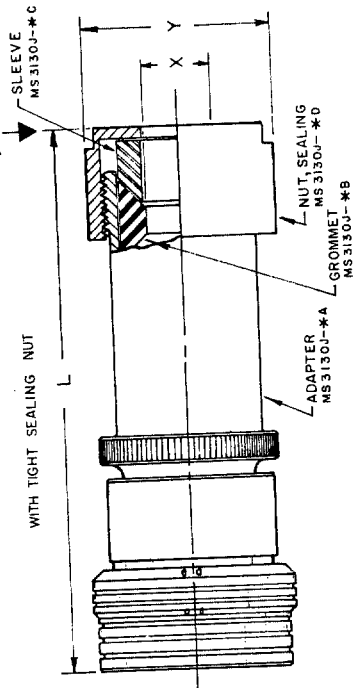
WITH TIGHT RETAINING NUT



CLASS J

JACKETED CABLE GLAND SEAL

MP



SHELL SIZE DASH NO.	L LENGTH MAX.	X CABLE SEALING MIN. MAX.	Y MAX. DIA. NUT	ADAPTER	GROMMET	SLEEVE	NUT SEALING
-3	1.734	.178	.210	MS3130J-#A	MS3130J-#B	MS3130J-#C	MS3130J-#D
-7	2.719	.381	.413	MS3130J-3A	MS3130J-3B	MS3130J-3C	MS3130J-3D
-12	3.188	.412	.444	MS3130J-7A	MS3130J-7B	MS3130J-7C	MS3130J-7D
-19	3.219	.522	.554	MS3130J-12A	MS3130J-12B	MS3130J-12C	MS3130J-12D
-27	3.219	.600	.632	MS3130J-19A	MS3130J-19B	MS3130J-19C	MS3130J-19D
-37	3.250	.662	.694	MS3130J-27A	MS3130J-27B	MS3130J-27C	MS3130J-27D
				MS3130J-37A	MS3130J-37B	MS3130J-37C	MS3130J-37D

DIMENSIONS IN INCHES UNLESS OTHERWISE SPECIFIED,
TOLERANCE: DECIMALS ± 0.016 , ANGULAR TOLERANCE $\pm 1/2^\circ$

MP
MAX CABLE WEIGHTS IN POUNDS
INDICATED FORCE IN DIRECTION
INDICATED.

SHELL SIZE	MAX. WEIGHTS
-3	2.0
-7	2.7
-12	4.0
-19	5.5
-27	8.0
-37	12.0

FED. SUP CLASS
5935

THIS STANDARD TAKES PRECEDENCE OVER DOCUMENTS
REFERENCED HEREIN. REFERENCED DOCUMENTS SHALL
BE OF THE ISSUE IN EFFECT ON DATE OF INVITATION
FOR BID.

NOTES:
1 FOR CLASS J ADAPTER, SEALING NUT, SLEEVE AND GROMMET SEE MS3130 SHEET 3.

EXAMPLE OF PART NO.

MS 3137 J 19-50 S Y
MS NUMBER CLASS SIZE INSERT CONTACT STYLE ALTERNATE INSERT POSITION
ARRANGEMENT

APPROVED 14 MAY 59 REVISED FOR CHANGES SEE SHEETS 1 & 2.

DD FORM 672 10 APR 64

(Coordinated) PREVIOUS EDITIONS OF THIS FORM ARE OBSOLETE.