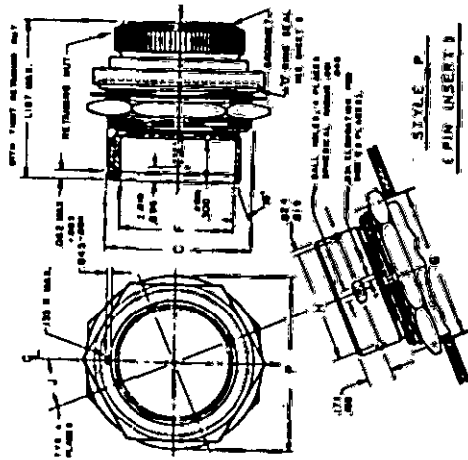
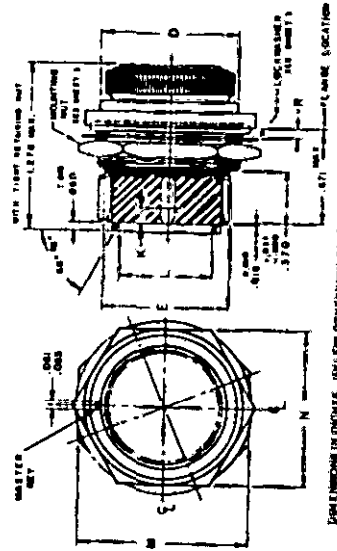


FED. SUP CLASS  
5935



STYLE P  
PIN INSERT



STYLE S  
SOCKET INSERT

SHELL SIZE BUSH NO.	C THREAD SIZE	D MAX. DIA. PLATE	E MAX. DIA. SHELL O.S.	F MAX. DIA. SHELL I.S.	G MAX. DIA. SHELL FOR SEAL	H MAX. DIA. SHELL FOR SEAL	I MAX. DIA. SHELL FOR SEAL	J MAX. DIA. SHELL FOR SEAL	K PRINT OF SPRING CONTACT WITH PLATING	L INSERT SEAL LB.	M PLATE PLATING	N PLATE PLATING	P DIA. PLATING	R DIA. SHELL	
															Q MAX. DIA. SHELL FOR SEAL
-3	2-36 UNF-2A	.025	.025	.024	.027	.027	.027	.027	30°	2.00	.025	.025	.025	.025	.025
-7	2-28 UNF-2A	.033	.033	.032	.035	.035	.035	.035	30°	2.00	.033	.033	.033	.033	.033
-12	2-20 UNF-2A	.040	.040	.039	.042	.042	.042	.042	30°	2.00	.040	.040	.040	.040	.040
-18	2-14 UNF-2A	.050	.050	.049	.052	.052	.052	.052	30°	2.00	.050	.050	.050	.050	.050
-27	2-10 UNF-2A	.062	.062	.061	.064	.064	.064	.064	30°	2.00	.062	.062	.062	.062	.062
-37	2-08 UNF-2A	.075	.075	.074	.077	.077	.077	.077	30°	2.00	.075	.075	.075	.075	.075

FOR DIMENSIONAL INFORMATION, THE STANDARD PAGES REFERRED TO BY THE DIMENSIONS IN EFFECT ON DATE OF REVOLUTION REFERENCED HEREIN SHOULD BE CONSULTED.  
EXAMPLE OF SHELL: 2-36 UNF-2A

THIS STANDARD IS NOT SUITABLE FOR USE ON AIR FORCE AERONAUTICAL SYSTEMS OR EQUIPMENT

This military standard is approved by the Department of Defense and is mandatory for use by all Departments & Agencies of the Department of Defense. Inquiries for all other engineering and design requirements and for requests for data should be made from this document.

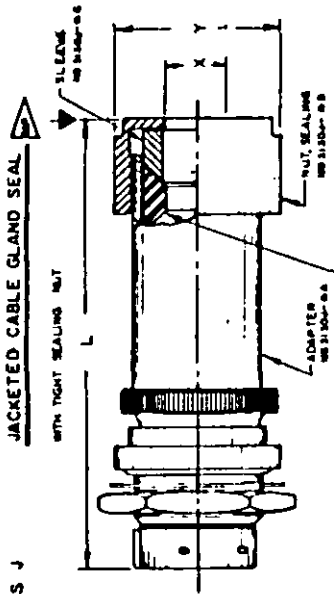
P.A. NAVY-AS Other Cust USAF-17 ARMY-EL Procurement Specification <b>MIL-C-81703</b>	International Interest	TITLE	MILITARY STANDARD
		CONNECTOR, RECEPTACLE, ELECTRIC, SOLDER TYPE, JAM NUT MOUNTING, PUSH-PIKL COUPLING, SERIES I (CLASS E, P, J AND H) SUPERSEDES:	<b>MS3134</b>  SHEET 1 OF 4

DD FORM 10 APR 64 672 (Coordinated) PREVIOUS EDITIONS OF THIS FORM ARE OBSOLETE.

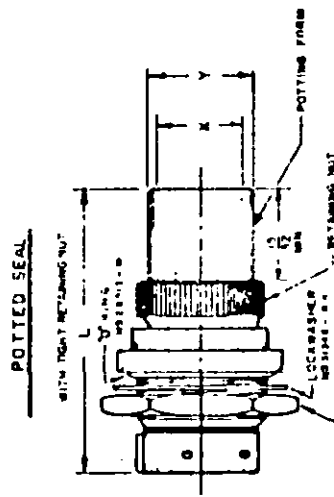
5935-1761-3

APPROVED 14 MAY 53 REVISED 19 AUG 1970 (F) 21 JULY 1971

FED. SUP CLASS  
5935



CLASS J



CLASS P

SHELL SIZE DASH NO.	L LENGTH MAX.	X CABLE SEALING MIN. MAX.	Y MAX. DIA. NUT	ADAPTOR	GROMMET	SLEEVE	NUT SEALING	SHELL SIZE DASH NO.	L LENGTH MAX.	X CABLE SEALING MIN. MAX.	Y MAX. DIA. NUT	LOCASSEPER	POTTING FIBER	RETAINING NUT	MOUNTING
-3	1.641	.178	.210	.845	MS3130-3A	MS3130-3B	MS3130-3C	MS3130-3A	2.625	.381	.315	MS3134-3A	MS3134-3B	MS3134-3C	MS3134-3D
-7	2.625	.381	.413	.926	MS3130-7A	MS3130-7B	MS3130-7C	MS3130-7A	3.073	.612	.446	MS3134-7A	MS3134-7B	MS3134-7C	MS3134-7D
-12	3.073	.512	.546	.988	MS3130-12A	MS3130-12B	MS3130-12C	MS3130-12A	3.125	.822	.556	MS3134-12A	MS3134-12B	MS3134-12C	MS3134-12D
-19	3.125	.822	.556	1.113	MS3130-19A	MS3130-19B	MS3130-19C	MS3130-19A	3.125	.600	.632	MS3134-19A	MS3134-19B	MS3134-19C	MS3134-19D
-27	3.125	.600	.632	1.113	MS3130-27A	MS3130-27B	MS3130-27C	MS3130-27A	3.125	.862	.886	MS3134-27A	MS3134-27B	MS3134-27C	MS3134-27D
-37	3.125	.862	.886	1.176	MS3130-37A	MS3130-37B	MS3130-37C	MS3130-37A							

MIN. DIA. MAX. DIA. INDICATED IN PARENTHESES  
TOLERANCE DECIMALS .004, ANGULAR TOLERANCE: ±.75°

SHELL SIZE	MAX. WEIGHT
-3	2.0
-7	2.7
-12	4.0
-19	4.3
-27	4.3
-37	12.0

DIMENSIONS IN INCHES UNLESS OTHERWISE SPECIFIED.  
TOLERANCE DECIMALS .004, ANGULAR TOLERANCE: ±.75°

NOTES:  
1. FOR CLASS J, ADAPTER, SLEEVE, NUT, SLEEVE AND GROMMET SEE MS 3130 SHEET 1.  
2. FOR CLASS P, LOCASSEPER, POTTING FIBER AND NUT SEE MS 3130 SHEET 3.



This military standard is approved by the Department of Commerce and is mandatory for use by all Departments & Agencies of the Department of Defense. Alterations for all uses engineering and design requirements and policies. Alterations for all uses engineering and design requirements and policies. Alterations for all uses engineering and design requirements and policies.

P.A. NAVY-AS  
Other Class  
USAF 17  
ARMY EL  
Procurement Specification  
MIL-C-81703

International Interest

TITLE  
CONNECTOR, RECEPTACLE, ELECTRIC, SOLDER TYPE,  
JAM NUT MOUNTING,  
PUSH-PULL COUPLING, SERIES 1  
SUPERSEDES:

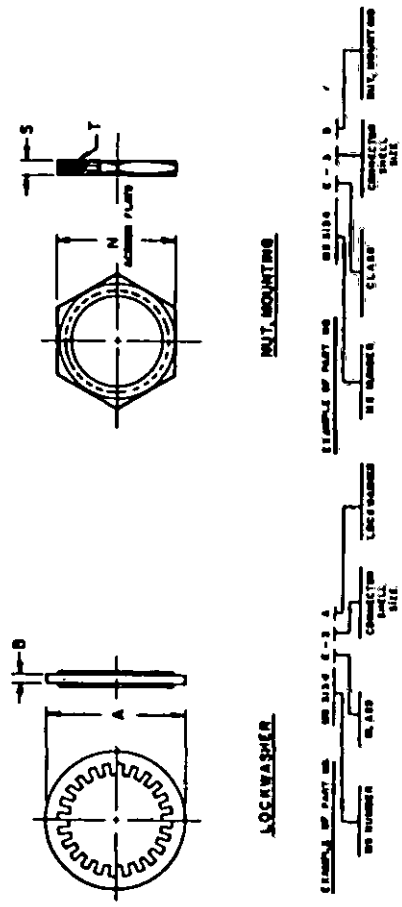
MILITARY STANDARD

MS3134

SHEET 2

APPROVED 14 MAY 59 REVISED (F) FOR CHANGES SEE SHEETS 1, 2, 3 & 4.

FED. SUP CLASS  
5935



LOCKWASHER SHELL PART NO.	LOCKWASHER		NUT MOUNTING			MS NUMBER
	A	B	N	S	T	
- 3	.770	.007	.625	.082	WIPER PLATE	MS 29513-13
- 7	.655	.007	.612		WIPER PLATE	MS 29513-17
- 12	1.000	.015	.737		WIPER PLATE	MS 29513-19
- 19	1.332		1.042	.125	WIPER PLATE	MS 29513-22
- 27	1.430		1.230		WIPER PLATE	MS 29513-26
- 37	1.438		1.375		WIPER PLATE	MS 29513-28

MEASUREMENTS IN INCHES  
UNLESS OTHERWISE SPECIFIED. TOLERANCES: DECIMALS ± .004  
FRACTIONS ± 1/16"

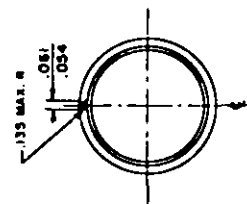
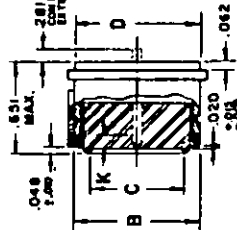
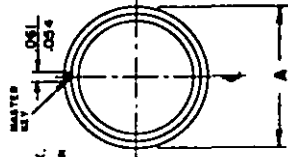
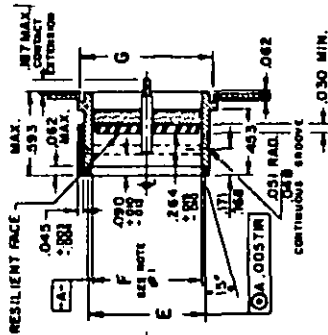
- NOTES:
1. A INDICATES LOCKWASHER
  2. B INDICATES NUT MOUNTING
  3. THESE LOCKWASHER AND MOUNTING NUTS ARE INTERCHANGEABLE FOR USE ON WEAPONS IN THIS CONNECTION.
  4. LOCKWASHERS... MATERIAL TO BE PHOSPHOROUS BRONZE
  5. NUT MOUNTING... MATERIAL "CLASS" - ALUMINUM
  6. "CLASS" - STEEL.

This military standard is approved by the Department of Defense and is mandatory for use by all Departments & Agencies of the Department of Defense. In addition, it is recommended for use by all other engineering and design organizations and the responsible use shall be made by... (text partially obscured)

P.A. NAVY - AS Other Cust USAF-17 ARMY-EI	International Interest	TITLE CONNECTOR, RECEPTACLE, ELECTRIC, SOLDER TYPE, JAM NUT MOUNTING, PUSH-PULL COUPLING (CLASS E, P, J AND H) SERIES I	MILITARY STANDARD <b>MS 3134</b>
Procurement Specification MIL-C-81703		SUPERSEDES:	SHEET 3

APPROVED 14 MAY 59 REVISED (E) FOR CHANGES SEE SHEETS 1, 2, 3 & 4.

FED. SUP CLASS  
5935



CLASS H (HERMETIC)

STYLE S (SOCKET INSERT)      STYLE P (PIN INSERT)

SHELL SIZE	A	B	C	D	E	F	G	NOTES
-3	.608	.435	.304	.300	.138 MAX.	.384	.531	1. P" DIAMETER MAY BE .005 LARGER FOR THE FIRST .125 INCH THAN AT THE BOTTOM OF THE BORE. 2. TRUE POSITION (P61) TOLERANCES SPECIFIED ARE IN ACCORDANCE WITH UNAS1 114.3-1966 (MESH). 3. DIMENSIONS LOCATING TRUE POSITIONS ARE BASIC.
-7	.776	.570	.380	.625	.531	.480	.656	
-12	.891	.708	.520	.749	SQUARE W/TH MORE PIN HAVING BASIC	.621	.781	
-19	1.016	.844	.680	.879	DIAMETER	.760	.906	
-27	1.190	1.000	.816	1.062	OF MATING CONTACT	.818	1.093	
-37	1.297	1.120	.937	1.186	CONTACT	1.090	1.187	

EXAMPLE OF PART NO. MS 3134 H SY5OPX

MS SHELL CLASS SIZE ARRANGEMENT STYLE(DORS) INSERT POSITION  
DIMENSIONS IN INCHES  
UNLESS OTHERWISE SPECIFIED, TOLERANCES ±.005 (DECIMALS)  
Y-EYELET  
Z-SOLDER CUP

FOR INSERT ARRANGEMENT SEE DWG HOLE DIA. NO.

This military standard is approved by the Department of Defense and is mandatory for use by all Departments & Agencies of the Department of Defense. Requests for all new engineering and design applications and for revisions will be made from this standard.

P.A. NAVY-AS  Other Cust USAF-17 ARMY-EL  Procurement Specification MIL-C-81703	International Interest	TITLE CONNECTOR, RECEPTACLE, ELECTRIC, SOLDER TYPE JAM NUT MTG. PUSH-PULL COUPLING, SERIES I (CLASS E, P, J AND H)	MILITARY STANDARD  <b>MS 3134</b>  SHEET 4
SUPERSEDES:			