

DIMENSIONS IN INCHES.  
UNLESS OTHERWISE SPEC-  
IFIED TOLERANCE ±

This military standard is approved by the Department of Defense and is mandatory for use by all Departments & Agencies of the Department of Defense. Submission for all new engineering and design applications and for replacement use shall be made from this document.

P.A. NAVY-AS		International Interest	TITLE		MILITARY STANDARD	
Other Cust: USAF-II ARMY-EL			CONNECTOR, RECEPTACLE, ELECTRIC, SOLDER TYPE, WALL MOUNTING FLANGE, PUSH-PULL COUPLING, SERIES I (CLASS F, P AND J)		MS 3130	
Procurement Specification MIL-C-81703			SUPERSEDES:		SHEET 2	
<p><b>CLASS P</b> POTTED SEAL</p>			<p><b>CLASS J</b> JACKETED CABLE GLAND SEAL</p>			
SHELL SIZE DASH NO.	L LENGTH MAX.	DIA MIN TO POTTING FORM	X DIA MIN TO POTTING FORM	Y DIA MAX TO POTTING FORM	SHELL SIZE DASH NO.	L LENGTH MAX.
- 3		.261	.261	.311	- 3	1.641
- 7		.372	.372	.319	- 7	2.825
- 12	1.640	.482	.482	.430	- 12	3.093
- 18		.602	.602	.560	- 18	3.125
- 27		.723	.723	.687	- 27	3.125
- 37		.837	.837	1.017	- 37	3.125

SHELL SIZE DASH NO.	L LENGTH MAX.	X CABLE SEALING MIN.	Y MAX. DIA. NUT	ADAPTER NUT	GROMMET	SLEEVE	NUT SEALING
- 3	1.641	.278	.210	.543	MS 3130-3	MS 3130-3C	MS 3130-3B
- 7	2.825	.381	.315	.826	MS 3130-7	MS 3130-7C	MS 3130-7B
- 12	3.093	.412	.444	.988	MS 3130-12	MS 3130-12C	MS 3130-12B
- 18	3.125	.522	.554	1.113	MS 3130-18	MS 3130-18C	MS 3130-18B
- 27	3.125	.600	.632	1.113	MS 3130-27	MS 3130-27C	MS 3130-27B
- 37	3.125	.642	.674	1.176	MS 3130-37	MS 3130-37C	MS 3130-37B

EXAMPLE OF PART NO. MS 3130 J 18-50 8 Y

MS NUMBER CLASS SIZE INSERT CONTACT STYLE ALTERNATE INSERT POSITION

NOTES:  
1. FOR CLASS J ADAPTER, SEALING NUT, SLEEVE AND GROMMET SEE SHEET 3.

MAX CABLE WEIGHTS IN POUNDS:  
UNALLOWABLE FRINGE IF SWEATING INDICATED.

THIS STANDARD TAKES PRECEDENCE OVER DOCUMENTS REFERENCED HEREIN. REFERENCED DOCUMENTS SHALL BE OF THE ISSUE IN EFFECT ON DATE OF INITIATION FOR BID.

APPROVED 14 MAY 59 REVISED (D) FOR CHANGES SEE SHEETS 1, 2 & 3.

This military standard is approved by the Department of Defense and is mandatory for use by all Departments & Agencies of the Department of Defense. Submission for all engineering and design applications and for requisitioning must be made from this document.

P.A. NAVY-AS

Other Cust  
USAF-11  
ARMY-EL

Procurement Specification  
MIL-C-81703

International  
Interest

TITLE

CONNECTOR, RECEPTACLE, ELECTRIC, SOLDER TYPE, WALL  
MOUNTING FLANGE, PUSH-PULL COUPLING,  
SERIES I (CLASS E, P AND J)

SUPERSEDES:

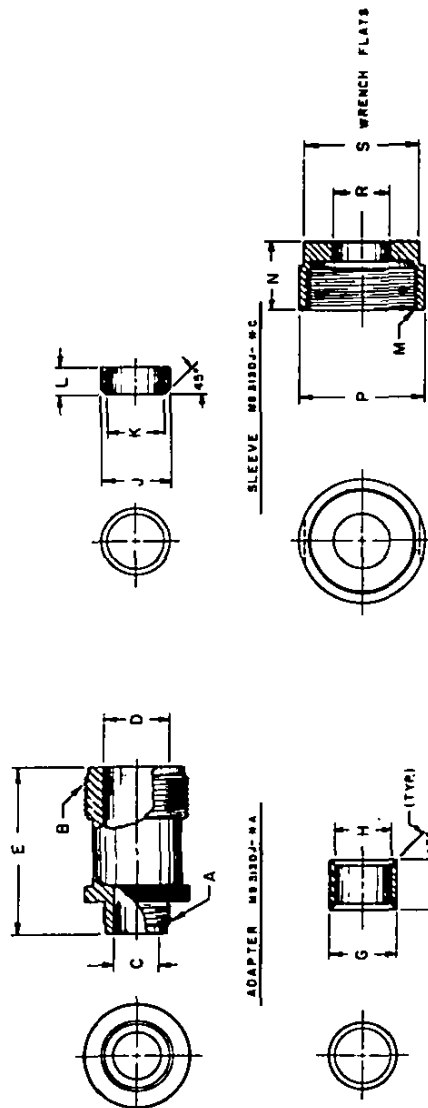
MILITARY STANDARD

MS 3130

SHEET 3

DD FORM 672  
10 APR 64

(Coordinated) PREVIOUS EDITIONS OF THIS FORM ARE OBSOLETE



NUT SEALING MS 3130J-WB

GROMMET MS 3130J-GB

SLEEVE MS 3130J-WC

ADAPTER MS 3130J-NA

SHELL SIZE DASH NO.	A - ADAPTER				B - GROMMET			C - SLEEVE				D - NUT SEALING				
	A	B	C	D	E	F	G	H	I	J	K	L	M	N	P	S
	(THD SIZE)	(THD SIZE)	(THD SIZE)	I.D.	O.A.L.	O.A.L.	O.D.	W	DIA.	O.D.	I.D.	O.A.L.	(THD SIZE)	Q.A.L.	MAX. DIA.	WRENCH FLATS
- 3	1/8-28 UNEF	.354	.383	.383	.719	.344	.373	.178	.210	.375	.281	.219	1/2-28 UNEF	.437	.645	.563
- 7	5/16-24 UNEF	.495	.533	.533	1.609	.380	.381	.413	.413	.580	.485		3/8-24 UNEF	.531	.926	.812
- 12	3/8-16 UNEF	.593	.623	.623	2.073	.437	.472	.444	.444	.609	.500		1/2-20 UNEF	.531	.988	.878
- 19	1/2-13 UNEF	.718	.687	.687	2.109	.437	.472	.522	.534	.672	.578	.248	3/4-10 UNEF	.531	1.113	1.000
- 27	3/4-10 UNEF	.834	.730	.730	2.109	.437	.472	.522	.534	.734	.640		1-8 UNEF	.531	1.113	1.000
- 37	1-8 UNEF	1.037	.830	.830	2.109	.437	.472	.522	.534	.835	.760		1-8 UNEF	.531	1.113	1.000

DIMENSIONS IN INCHES  
UNLESS OTHERWISE SPECIFIED, TOLERANCE DECIMALS .006, ANGLES 1/2°

NOTES:

- INDICATES ADAPTER
- INDICATES GROMMET
- INDICATES SLEEVE
- INDICATES NUT SEALING

5. THESE PARTS ARE INTENDED FOR USE WITH CLASS J CONNECTORS.

THIS STANDARD TAKES PRECEDENCE  
OVER DOCUMENTS REFERENCED HEREIN.  
THESE DOCUMENTS SHALL BE  
THE STANDARD FOR ALL  
INQUIRY ON DATE OF  
INQUIRY FOR BID

EXAMPLE OF PART NO. MS 3130 J-7-2  
MS NUMBER CLASS SIZE ORDMET  
(SEE NOTE 1)

APPROVED 14 MAY 59 REVISED FOR CHANGES SEE SHEETS 12, 13.