

INCH-POUND

MS3127L
 07 November 2007
 SUPERSEDING
 MS3127K
 6 June 2003

DETAIL SPECIFICATION SHEET

CONNECTORS, RECEPTACLE, ELECTRICAL, SERIES 1, CRIMP TYPE,
 BOX MOUNTING, FLANGE, NO. 4/6 HOLES, BAYONET COUPLING

Inactive for new design as of 5 September 1975.
 For new design, use MS3474.

This specification is approved for use by all Departments and Agencies of the Department of Defense.

The requirements for acquiring the product described herein shall consist of this specification sheet and MIL-DTL-26482

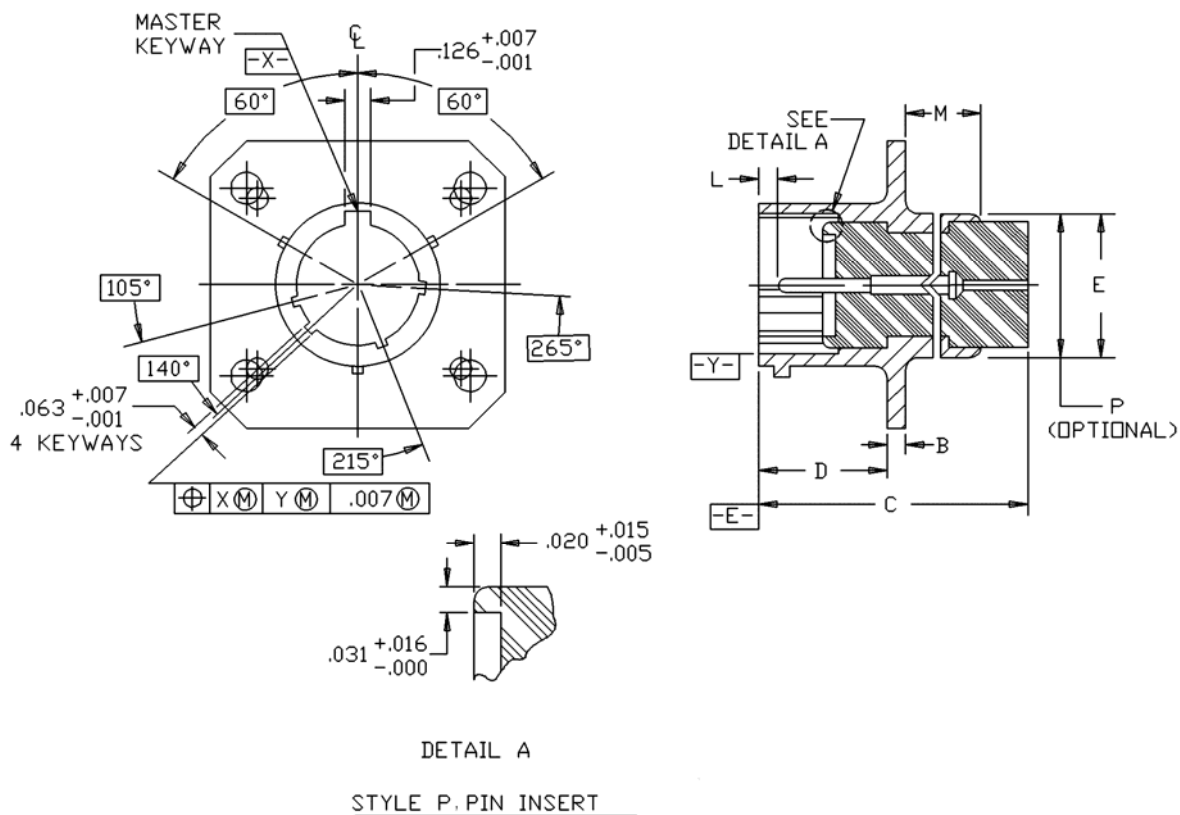


FIGURE 1. Dimensions and configurations.

AMSC N/A

FSC 5935

MS3127L

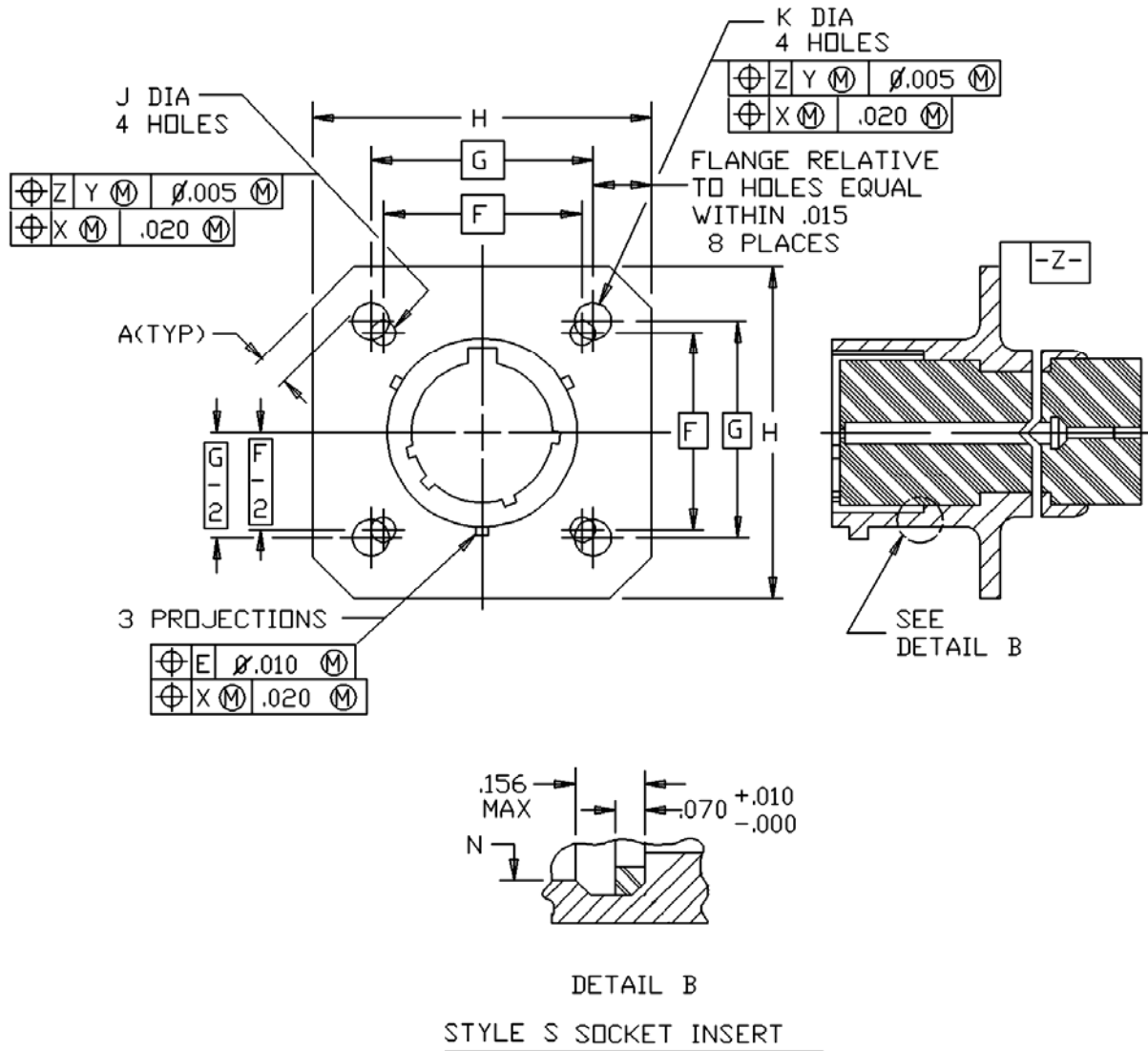


FIGURE 1. Dimensions and configurations - Continued.

MS3127L

Shell size	A min edge distance	B $\pm .016$ thick mounting flange	C max overall length	D + .031 - .000 mounting flange location	E dia. + .031 - .024 OD	F (TP) mounting holes	G (TP) mounting holes
10	.035	.062	1.320	.462	.562	.719	.812
12					.688	.812	.938
14					.812	.906	1.031
16					.938	.969	1.125
18					1.062	1.062	1.203
20	.050	.094	1.367	.556	1.188	1.156	1.297
22					1.312	1.250	1.375
					1.418	.589	1.438

FIGURE 1. Dimensions and configurations - Continued

MS3127L

Shell size	H max length	J $\pm.005$ dia mounting holes	K $\pm.005$ dia mounting holes	L $+.010$ $-.020$ pin contact location	M max	N max ID gasket	P UNEF-2A thread (optional)
10	1.141	.120	.150	.085	.406	.457	.5625-24
12	1.266					.564	.6875-24
14	1.360					.689	.8125-20
16	1.453					.814	.9375-20
18	1.532					.907	1.0625-18
20	1.688					1.039	1.1875-18
22	1.766	.147				1.164	1.3125-18
24	1.891					1.289	1.4375-18

FIGURE 1. Dimensions and configurations - Continued.

MS3127L

Inches	mm	Inches	mm	Inches	mm	Inches	mm	Inches	mm
.001	0.03	.085	2.16	.688	17.48	1.156	29.36	1.438	36.53
.005	0.13	.094	2.39	.689	17.50	1.164	29.57	1.453	36.91
.007	0.18	.120	3.05	.719	18.26	1.188	30.18	1.500	38.10
.010	0.28	.126	3.20	.812	20.62	1.203	30.56	1.532	38.91
.015	0.39	.147	3.73	.814	20.68	1.250	31.75	1.688	42.88
.016	0.41	.150	3.82	.906	23.01	1.266	32.16	1.766	44.86
.020	0.51	.156	3.96	.907	23.04	1.289	32.74	1.891	48.03
.024	0.61	.406	10.31	.938	23.83	1.297	32.94		
.031	0.79	.457	11.61	.969	24.61	1.312	33.32		
.035	0.89	.462	11.73	1.031	26.19	1.320	33.53		
.050	1.28	.556	14.12	1.039	26.39	1.360	34.54		
.062	1.57	.562	14.27	1.062	26.97	1.367	34.72		
.063	1.60	.564	14.33	1.125	28.58	1.375	34.93		
.070	1.78	.589	14.96	1.141	28.98	1.418	36.02		

NOTES:

1. Dimensions are in inches.
2. Metric equivalents are given for information only.
3. Unless otherwise specified, tolerance is $\pm 1/2^\circ$.
4. True position (TP) tolerance shall be in accordance with ASME Y14.5.
5. Intermatebility dimensions shall be in accordance with MIL-DTL-26482.

FIGURE 1. Dimensions and configurations - Continued

MS3127L

REQUIREMENTS:

Dimensions and configurations: See figure 1.

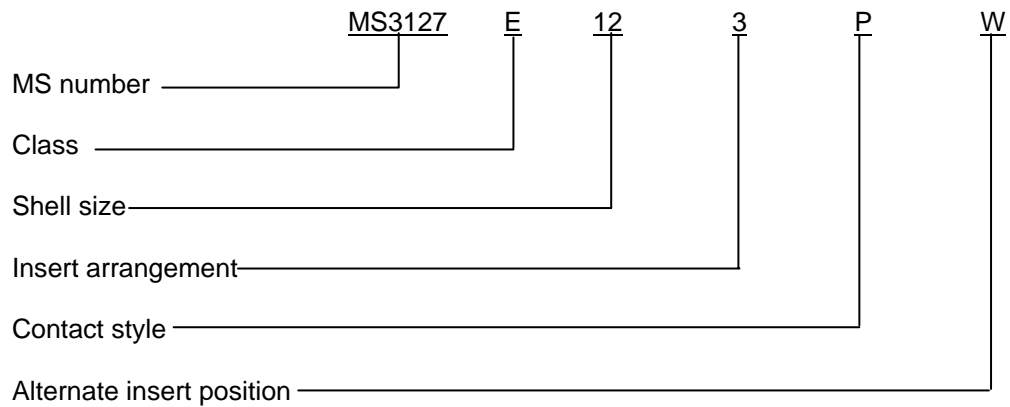
This connector mates in accordance with MIL-STD-1669.

Insert arrangements shall be in accordance with MIL-STD-1669.

Connectors accessories: See SAE-AS85049.

Packing material shall be in accordance with ASTM-D2000.

Part or Identifying Number (PIN) example:



Changes from previous issue. Marginal notation are not used in this revision to identify changes with respect to the previous issue due to the extent of the changes.

Referenced documents. In addition to MIL-DTL-26482, this document references the following:

MS3474
ASME Y14.5
ASTM-D2000
MIL-STD-1669
SAE-AS85049

MS3127L

CONCLUDING MATERIAL

Custodians:

Army -CR
Navy - AS
Air Force - 11
DLA - CC

Preparing activity:

DLA - CC

(Project 5935-2007-185)

Review activities:

Army - AV, MI
Navy - EC, SH
Air Force - 99

NOTE: The activities listed above were interested in this document as of the date of this document. Since organization and responsibilities can change, you should verify the currency of the information above using the ASSIST Online database at <http://assist.daps.dla.mil>.