

INCH-POUND

MS3126G  
w/AMENDMENT 1  
29 April 2009  
SUPERSEDING  
MS3126G  
07 November 2007

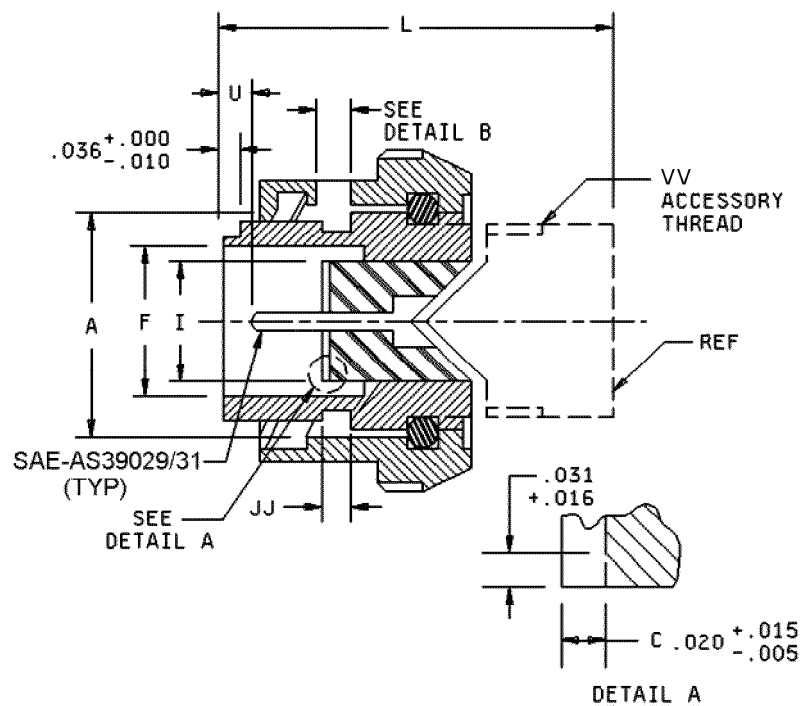
## DETAIL SPECIFICATION SHEET

CONNECTORS, PLUG, ELECTRICAL, CRIMP TYPE,  
STRAIGHT, BAYONET COUPLING, SERIES 1, CLASSES E, F AND P

Inactive for new design after 5 September 1975.  
For new design, use MS3476.

This specification is approved for use by all  
Departments and Agencies of the Department of Defense.

The requirements for acquiring the product described herein  
shall consist of this specification sheet and MIL-DTL-26482.



PLUG, STYLE P (PIN INSERT)

FIGURE 1. Plug, dimensions, classes E, F and P.

MS3126G  
w/AMENDMENT 1

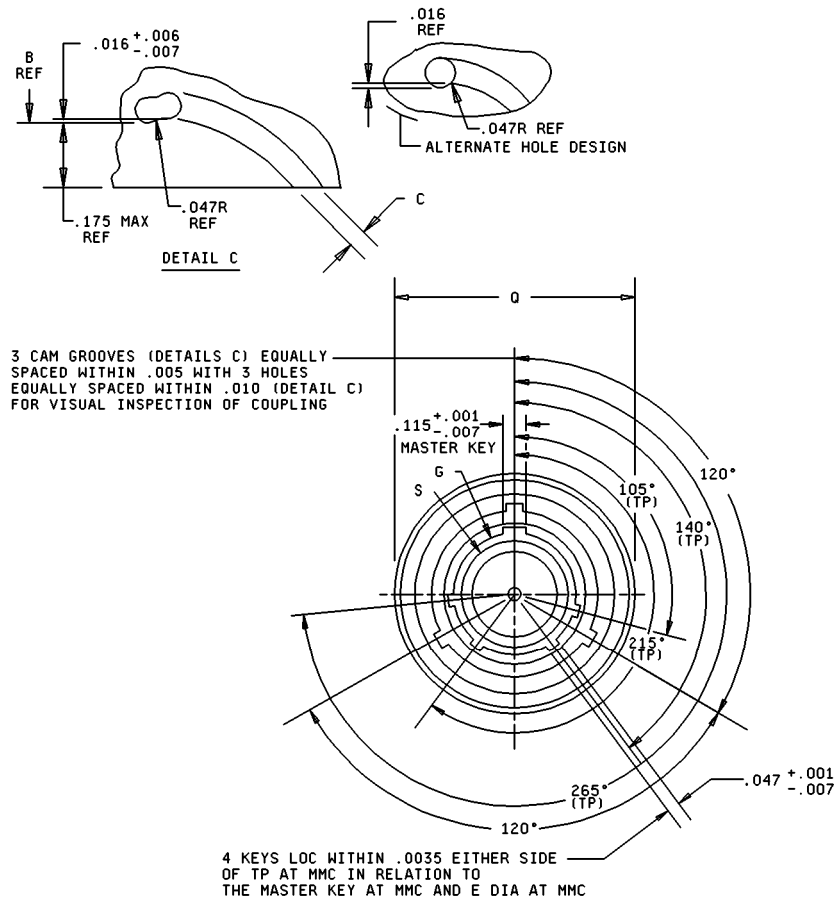
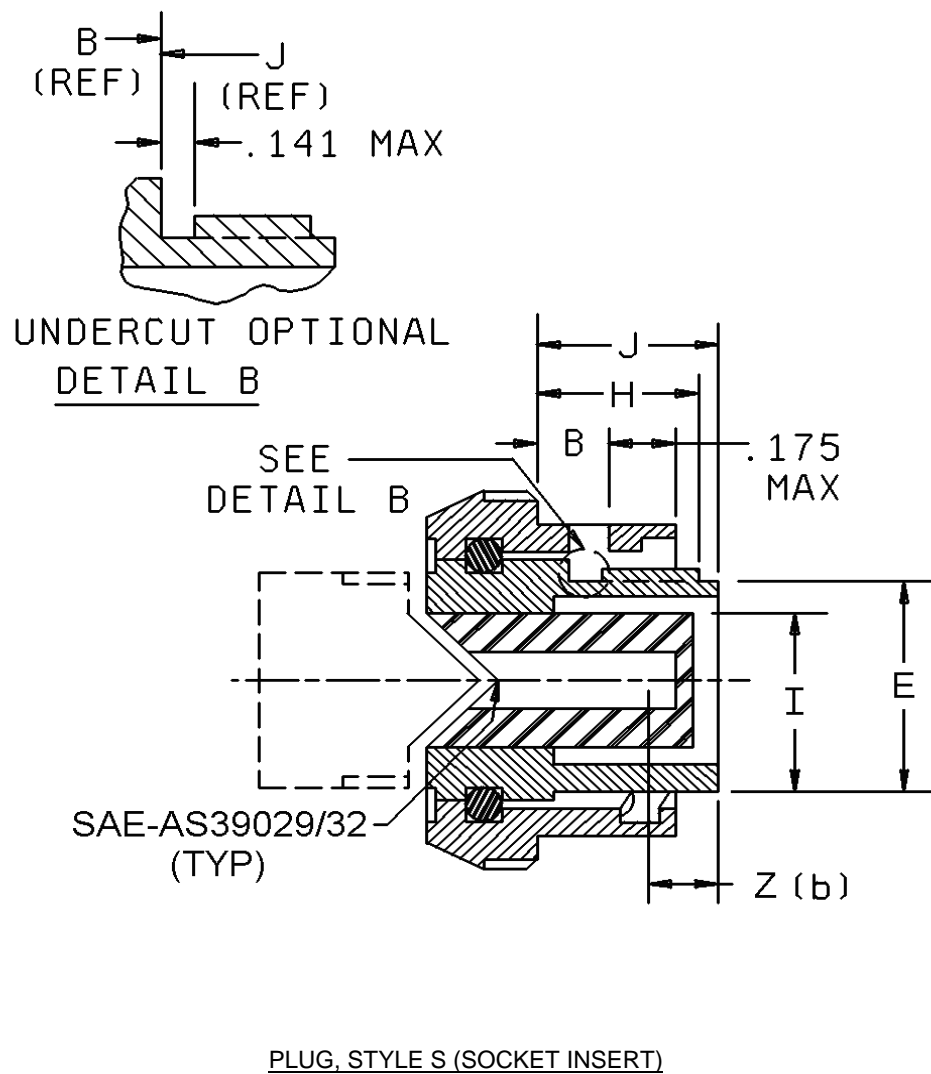


FIGURE 1. Plug, dimensions, classes E, F and P - Continued.

MS3126G  
w/AMENDMENT 1



Inches	mm
.141	3.58
.175	4.44

FIGURE 1. Plug, dimensions, classes E, F and P - Continued.

MS3126G  
w/AMENDMENT 1

Shell size	A dia +.005 -.001 coupling location	B $\pm .020$ bay lock location	C dia +.016 - .001 bay groove width	E dia +.001 -.005 OD	F dia min ID	G dia +.005 -.005 ID slots
8	.481	.113	.090	.357	.292	.576
10	.602			.485	.409	.697
12	.761			.597	.523	.871
14	.885			.722	.648	.995
16	1.010			.847	.722	1.120
18	1.136			.947	.862	1.245
20	1.260			1.072	.987	1.370
22	1.385			1.197	1.111	1.495
24	1.510	.152	.137	1.322	1.237	1.624

Shell size	H +.020 -.000 socket insert location	I max insert dia	J $\pm .010$ shoulder location	JJ +.020 -.000 pin insert location	Q max dia over-all	S +.001 -.010 dia over keys
8	.337	.285	.353	.030	.782	.402
10		.402			.926	.530
12		.516			1.043	.674
14		.641			1.183	.804
16		.766			1.305	.929
18		.855			1.391	1.029
20	.399	.980	.415	.092	1.531	1.154
22		1.105			1.656	1.279
24		1.229			1.777	1.404

FIGURE 1. Plug, dimensions, classes E, F and P - Continued.

MS3126G  
w/AMENDMENT 1

Shell size	U +.010 -.020 pin contact location	Z (b) +.000 -.078 socket contact spring location	V V class 2A accessory thread
8	.075	.143	7/16-28
10			9/16-24
12			11/16-24
14			13/16-20
16			15/16-20
18			11/16-18
20			13/16-18
22			15/16-18
24			17/16-18

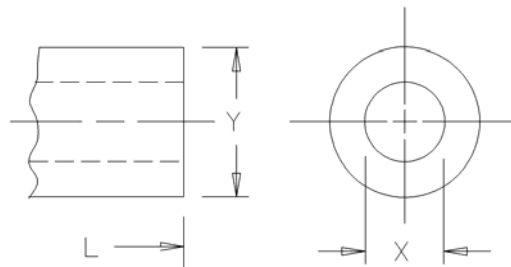
FIGURE 1. Plug, dimensions, classes E, F and P - Continued.

MS3126G  
w/AMENDMENT 1

Inches	mm	Inches	mm	Inches	mm	Inches	mm
.001	.03	.292	7.42	.772	19.61	1.154	29.31
.005	.13	.337	8.56	.782	19.86	1.183	30.05
.006	.15	.353	8.97	.804	20.42	1.197	30.40
.007	.18	.357	9.07	.847	21.51	1.229	31.22
.010	.25	.399	10.13	.855	21.72	1.237	31.42
.015	.38	.402	10.21	.862	21.89	1.245	31.62
.016	.41	.409	10.39	.871	22.12	1.260	32.00
.020	.51	.415	10.54	.885	22.48	1.279	32.49
.030	.76	.485	12.32	.926	23.52	1.305	33.15
.031	.79	.516	13.11	.929	23.60	1.322	33.58
.036	.91	.523	13.28	.947	24.05	1.370	34.80
.075	1.90	.530	13.46	.980	24.89	1.385	35.18
.090	2.29	.576	14.63	.987	25.07	1.391	35.33
.092	2.34	.597	15.16	.995	25.27	1.404	35.66
.113	2.87	.602	15.29	1.010	25.65	1.495	37.97
.115	2.92	.641	16.28	1.029	26.14	1.510	38.35
.137	3.48	.648	16.46	1.043	26.49	1.531	38.89
.141	3.58	.679	17.25	1.072	27.23	1.624	41.25
.143	3.63	.697	17.70	1.105	28.07	1.656	42.06
.152	3.86	.722	18.34	1.111	28.22	1.777	45.14
.175	4.44	.761	19.33	1.120	28.45		
.285	7.24	.766	19.46	1.136	28.85		

FIGURE 1. Plug, dimensions, classes E, F and P- Continued.

MS3126G  
w/AMENDMENT 1

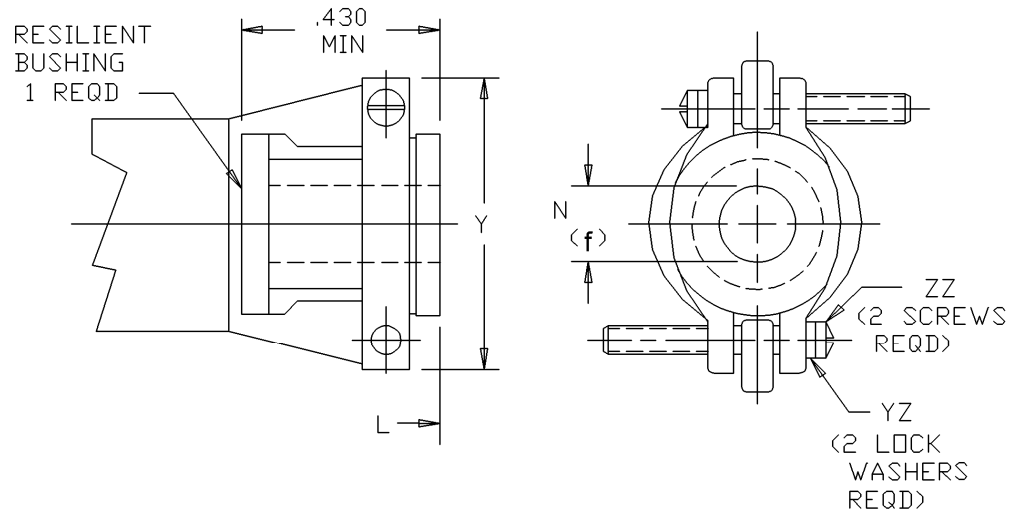


Shell size	L max over-all length	X dia min ID	Y dia max OD
8	1.513 (38.43)	.259 (6.58)	.608 (15.44)
10		.359 (9.12)	.730 (18.54)
12		.469 (11.91)	.858 (21.79)
14		.589 (14.96)	.954 (24.23)
16		.717 (18.21)	1.110 (28.19)
18		.779 (19.79)	1.244 (31.60)
20	1.638 (41.61)	.901 (22.89)	1.360 (34.54)
22		1.009 (25.63)	1.404 (35.66)
24		1.123 (28.52)	1.610 (40.89)

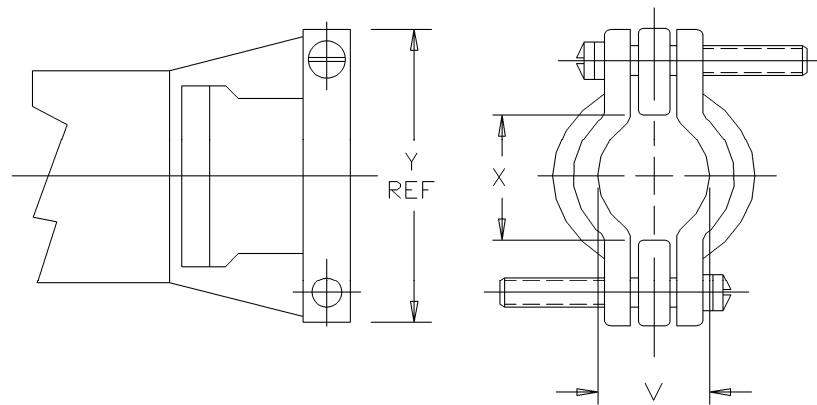
CLASS E

FIGURE 1. Plug, dimensions, classes E, F and P - Continued.

MS3126G  
w/AMENDMENT 1



CLASS F, BUSHING INSTALLED



Inches	mm
.430	10.92

CLASS F, BUSHING REMOVED

FIGURE 1. Plug, dimensions, classes E, F and P - Continued.



MS3126G  
w/AMENDMENT 1

Shell size	L max over-all length	X dia min open	Y max	V max closed
8	2.413 (61.29)	.234 (5.94)	.828 (21.03)	.187 (4.75)
10		.297 (7.54)	.891 (22.63)	
12		.422 (10.72)	1.016 (25.81)	
14		.547 (13.89)	1.141 (28.98)	
16	2.528 (64.21)	.609 (15.47)	1.203 (30.56)	.356 (9.04)
18		.734 (18.64)	1.469 (37.31)	.456 (11.58)
20	2.753 (69.93)	.922 (23.42)	1.656 (42.06)	.519 (13.18)
22				
24	2.830 (71.88)	.984 (24.99)	1.750 (44.45)	.657 (16.69)

CLASS F

FIGURE 1. Plug, dimensions, classes E, F and P - Continued.

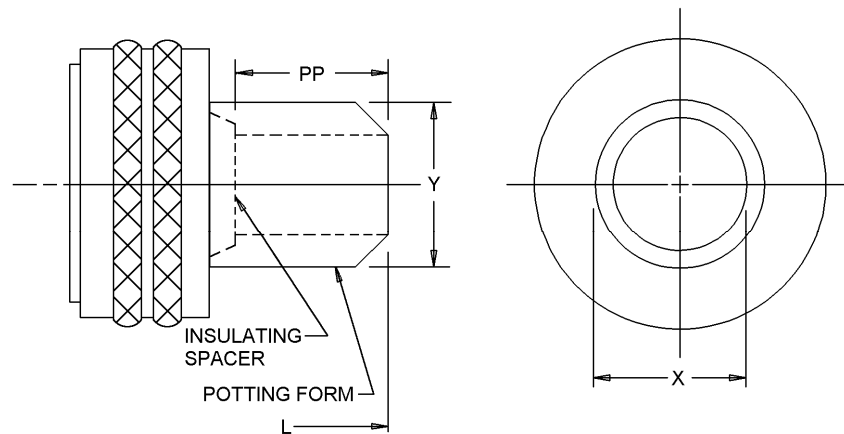
MS3126G  
w/AMENDMENT 1

Shell size	N (f) free $\pm .010$	ZZ screw threads	YZ lock washers NASM35338 or NASM35333
8	.125 (3.18)	6-32 UNC	NASM35338-98 or -41  NASM35333-105 or NASM35333-37
10	.180 (4.57)		
12	.312 (7.92)		
14	.373 (9.47)		
16	.500 (12.70)		
18	.625 (15.88)	8-32 UNC	NASM35338-99 or -42  NASM35333-106 or NASM35333-38
20	.625 (15.88)		
22	.750 (19.05)		
24	.800 (20.32)		

CLASS F

FIGURE 1. Plug, dimensions, classes E, F and P - Continued.

MS3126G  
w/AMENDMENT 1



Shell size	L max over-all length	X dia min	Y dia max	PP min
8	1.750 (44.45)	.317 (8.05)	.608 (15.44)	.250 (6.35)
10		.434 (11.02)	.734 (18.64)	
12		.548 (13.92)	.858 (21.79)	
14		.673 (17.09)	.984 (24.99)	
16		.798 (20.27)	1.110 (28.19)	
18		.899 (22.83)	1.234 (31.34)	
20	1.892 (48.06)	1.024 (26.01)	1.360 (34.54)	
22		1.149 (29.18)	1.484 (37.69)	
24	1.953 (49.61)	1.274 (32.36)	1.610 (40.89)	

CLASS P

NOTES:

1. Dimensions are in inches
2. Metric equivalents are given for information only.
3. Distance between end of shell and the point at which a gage pin having the same basic diameter as the mating contact and a square face first engages socket contact spring.
4. True position (TP) tolerances specified are in accordance with ASME Y14.5M.
5. For class F: Use MS3420 bushing if reduced opening is required. Lockwashers may be captivated.

FIGURE 1. Plug, dimensions, classes E, F and P - Continued.

MS3126G  
w/AMENDMENT 1

**REQUIREMENTS:**

Dimensions and configuration: See figure 1.

This connector mates with MS3120, MS3122, MS3124, MS3127 and MS3128.

Insert arrangement shall be in accordance with MIL-STD-1669.

Packing material shall meet the requirements of ASTM-D2000.

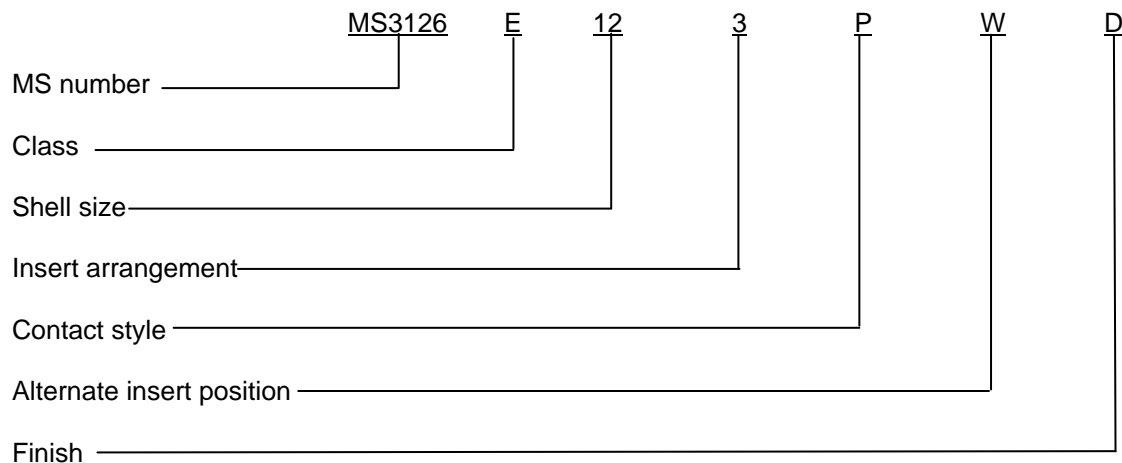
MS3476 is similar to MS3126 except for the following: MS3476 utilizes rear release contacts whereas connectors produced to this document utilize front release contacts.

Finishes: A finish designator shall not be included in the PIN when finish W is required. See MIL-DTL-26482 for alternative finishes D, T and Z for classes E, F and P.

Material:

- a. Shell and coupling ring - aluminum alloy.
- b. Bayonet pins – stainless steel, passivated.

Part or Identifying Number (PIN) example:



Note: When finish W is required, no finish designator is used (class W is the default finish).

Amendment Notations. The margins of this specification are marked with vertical lines to indicate modifications generated by this amendment. This was done as a convenience only and the Government assumes no liability whatsoever for any inaccuracies in these notations. Bidders and contractors are cautioned to evaluate the requirements of this document based on the entire content irrespective of the marginal notations.

MS3126G  
w/AMENDMENT 1

Referenced documents. In addition to MIL-DTL-26482, this document references the following:

MS3120  
MS3122  
MS3124  
MS3127  
MS3128  
MS3420  
MS3476  
MIL-STD-1669  
SAE-AS39029/31  
SAE-AS39029/32  
ASME Y14.5M  
ASTM-D2000  
NASM35333  
NASM35338

CONCLUDING MATERIAL

Custodians:

Army – CR  
Navy – SH  
Air Force – 85  
DLA - CC

Preparing activity:

DLA - CC

(Project 5935-2008-131)

Review activities:

Army - AR, MI  
Air Force – 99

NOTE: The activities listed above were interested in this document as of the date of this document. Since organization and responsibilities can change, you should verify the currency of the information above using the ASSIST Online database at <http://assist.daps.dla.mil>.