

INCH-POUND

MS3126G
 07 November 2007
 SUPERSEDING
 MS3126F
 06 June 2003

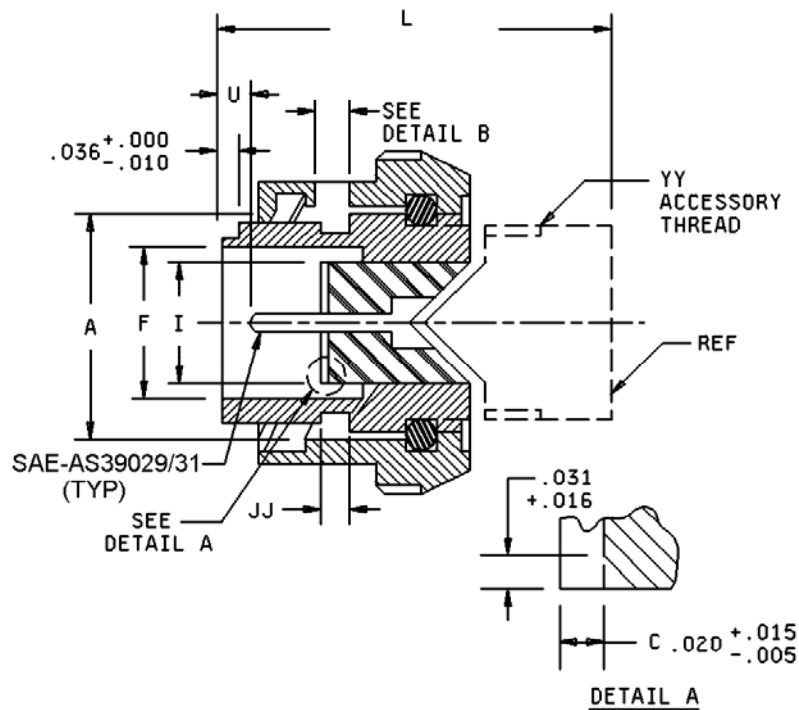
DETAIL SPECIFICATION SHEET

CONNECTORS, PLUG, ELECTRICAL, CRIMP TYPE,
STRAIGHT, BAYONET COUPLING

Inactive for new design after 5 September 1975.
 For new design, use MS3476.

This specification is approved for use by all Departments and Agencies of the Department of Defense.

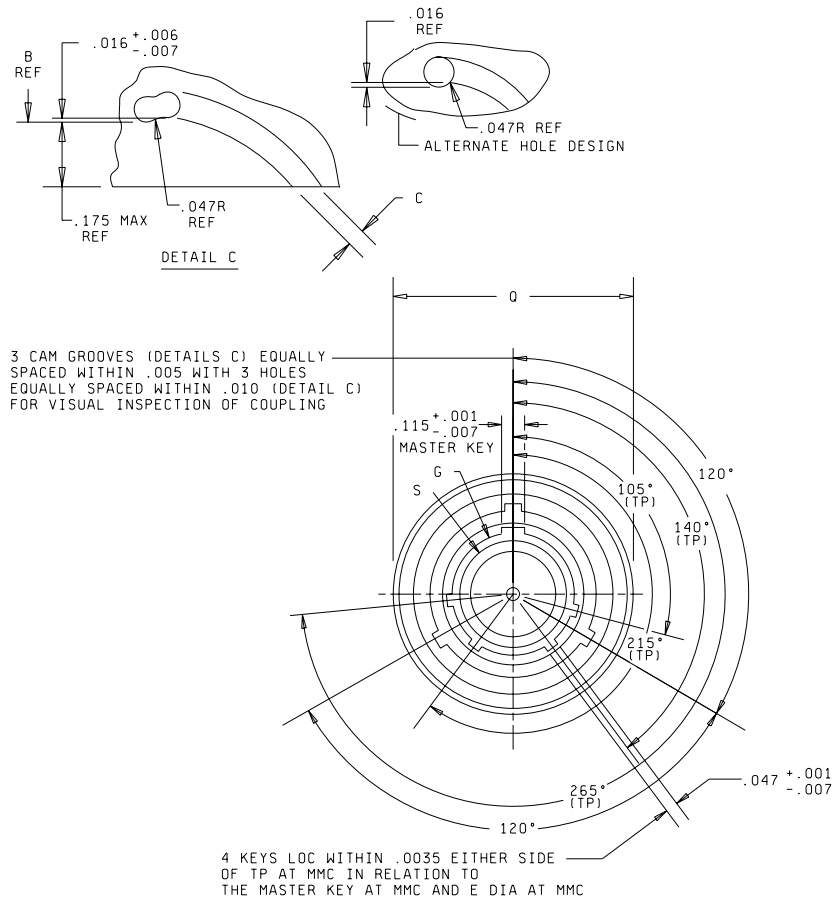
The requirements for acquiring the product described herein shall consist of this specification sheet and MIL-DTL-26482.



Plug, style P (Pin insert)

FIGURE 1. Dimensions for classes E, F, and P.

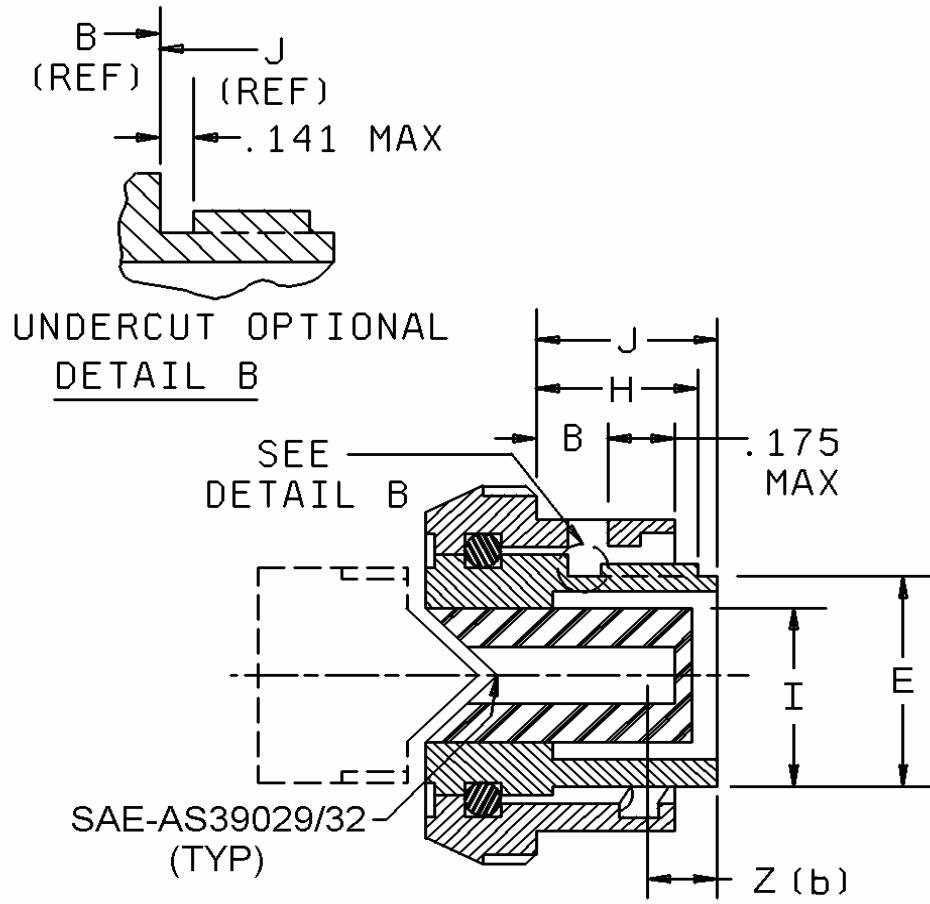
MS3126G



Plug, style S (socket insert)

FIGURE 1. Dimensions for classes E, F, and P - Continued.

MS3126G



Plug, style S (socket insert)

Inches	mm
.141	3.58
.175	4.44

FIGURE 1. Dimensions for classes E, F, and P - Continued.

MS3126G

Size	A dia +.005 -.001 coupling location	B \pm .020 bay lock location	C dia +.016 -.001 bay groove width	E dia +.001 -.005 OD	F dia min ID	G dia +.005 -.005 ID slots
8	.481	.113	.090	.357	.292	.576
10	.602			.485	.409	.697
12	.761			.597	.523	.871
14	.885			.722	.648	.995
16	1.010			.847	.722	1.120
18	1.136			.947	.862	1.245
20	1.260			1.072	.987	1.370
22	1.385	1.197	1.111	1.495		
24	1.510	.152	.137	1.322	1.237	1.624

Size	H +.020 -.000 socket insert location	I max insert dia	J \pm .010 shoulder location	JJ +.020 -.000 pin insert location	Q max dia over-all	S +.001 -.010 dia over keys
8	.337	.285	.353	.030	.782	.402
10		.402			.926	.530
12		.516			1.043	.674
14		.641			1.183	.804
16		.766			1.305	.929
18		.855			1.391	1.029
20	.399	.980	.415	.092	1.531	1.154
22		1.105			1.656	1.279
24		1.229			1.777	1.404

FIGURE 1. Dimensions for classes E, F, and P - Continued.

MS3126G

Size	U +.010 -.020 pin contact location	Z (b) +.000 -.078 socket contact spring location	W class 2A accessory thread
8	.075	.143	7/16-28
10			9/16-24
12			11/16-24
14			13/16-20
16			15/16-20
18			11/16-18
20			13/16-18
22			15/16-18
24			17/16-18

FIGURE 1. Dimensions for classes E, F, and P - Continued.

MS3126G

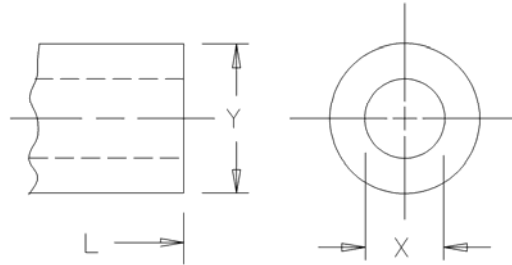
Inches	mm	Inches	mm	Inches	mm	Inches	mm
.001	.03	.292	7.42	.772	19.61	1.154	29.31
.005	.13	.337	8.56	.782	19.86	1.183	30.05
.006	.15	.353	8.97	.804	20.42	1.197	30.40
.007	.18	.357	9.07	.847	21.51	1.229	31.22
.010	.25	.399	10.13	.855	21.72	1.237	31.42
.015	.38	.402	10.21	.862	21.89	1.245	31.62
.016	.41	.409	10.39	.871	22.12	1.260	32.00
.020	.51	.415	10.54	.885	22.48	1.279	32.49
.030	.76	.485	12.32	.926	23.52	1.305	33.15
.031	.79	.516	13.11	.929	23.60	1.322	33.58
.036	.91	.523	13.28	.947	24.05	1.370	34.80
.075	1.90	.530	13.46	.980	24.89	1.385	35.18
.090	2.29	.576	14.63	.987	25.07	1.391	35.33
.092	2.34	.597	15.16	.995	25.27	1.404	35.66
.113	2.87	.602	15.29	1.010	25.65	1.495	37.97
.115	2.92	.641	16.28	1.029	26.14	1.510	38.35
.137	3.48	.648	16.46	1.043	26.49	1.531	38.89
.141	3.58	.679	17.25	1.072	27.23	1.624	41.25
.143	3.63	.697	17.70	1.105	28.07	1.656	42.06
.152	3.86	.722	18.34	1.111	28.22	1.777	45.14
.175	4.44	.761	19.33	1.120	28.45		
.285	7.24	.766	19.46	1.136	28.85		

NOTES:

1. Dimensions are in inches
2. Metric equivalents are given for information only.
3. Distance between end of shell and the point at which a gage pin having the same basic diameter as the Mating contact and a square face first engages socket contact spring.
4. True position (TP) tolerances specified are in accordance with ASME Y14.5M.
5. Material: Shell and coupling ring - aluminum alloy.

FIGURE 1. Dimensions for classes E, F, and P - Continued.

MS3126G



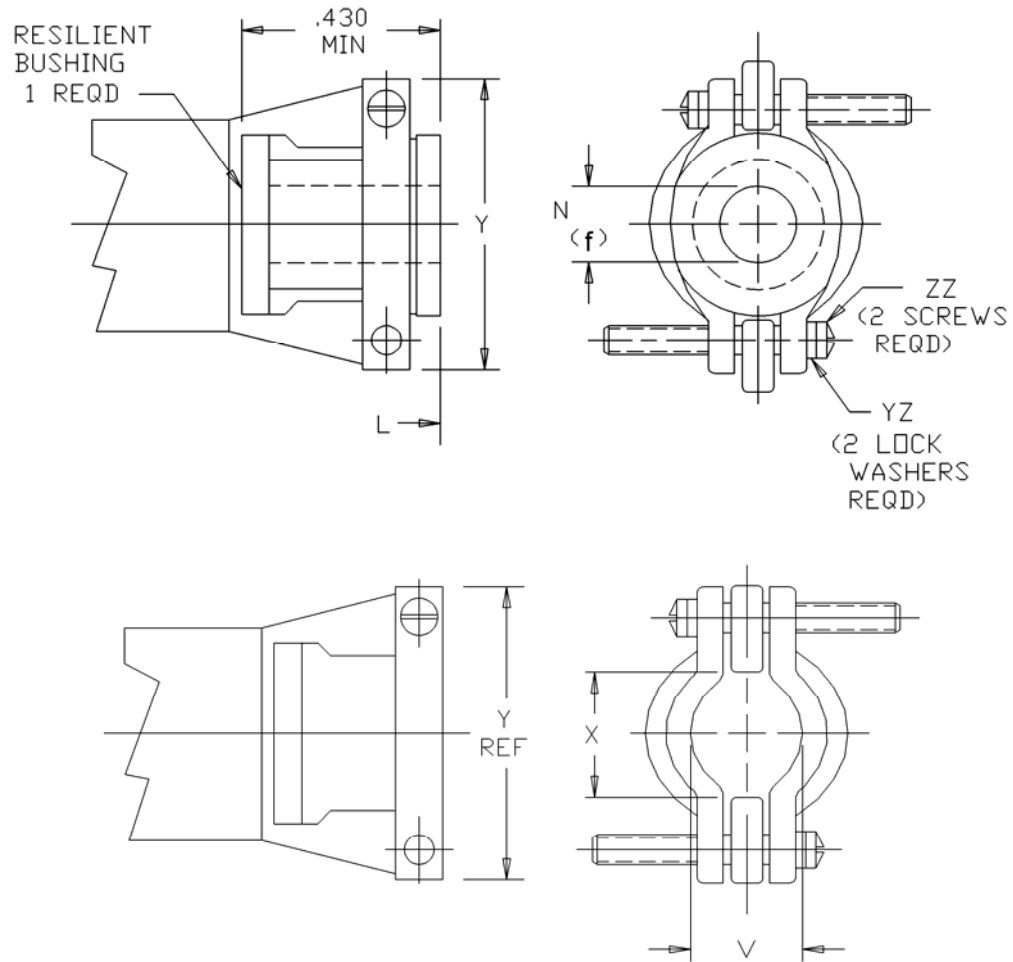
Size	L max over-all length	X dia min ID	Y dia max OD
8	1.513 (38.43)	.259 (6.58)	.608 (15.44)
10		.359 (9.12)	.730 (18.54)
12		.469 (11.91)	.858 (21.79)
14		.589 (14.96)	.954 (24.23)
16		.717 (18.21)	1.110 (28.19)
18		.779 (19.79)	1.244 (31.60)
20	1.638 (41.61)	.901 (22.89)	1.360 (34.54)
22		1.009 (25.63)	1.404 (35.66)
24		1.123 (28.52)	1.610 (40.89)

NOTES:

1. Dimensions are in inches.
2. Metric equivalents are given for information only.

FIGURE 2. Dimensions for class E.

MS3126G



Inches	mm
.430	10.92

Bushing removed

FIGURE 3. Dimensions for class F.

MS3126G

Size	L max over-all length	X dla min open	Y max	V max closed
8	2.413 (61.29)	.234 (5.94)	.828 (21.03)	.187 (4.75)
10		.297 (7.54)	.891 (22.63)	
12		.422 (10.72)	1.016 (25.81)	.281 (7.14)
14		.547 (13.89)	1.141 (28.98)	.325 (8.26)
16	2.528 (64.21)	.609 (15.47)	1.203 (30.56)	.356 (9.04)
18		.734 (18.64)	1.469 (37.31)	.456 (11.58)
20	2.753 (69.93)	.922 (23.42)	1.656 (42.06)	.519 (13.18)
22				
24	2.830 (71.88)	.984 (24.99)	1.750 (44.45)	.657 (16.69)

FIGURE 3. Dimensions for class F - Continued.

MS3126G

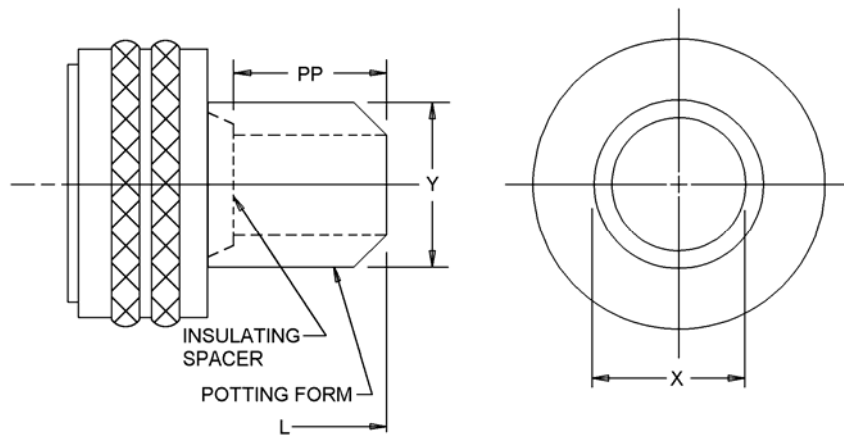
Size	N (f) free $\pm .010$	ZZ screw threads	YZ lock washers NASM35338 or NASM35333
8	.125 (3.18)	6-32UNC	NASM35338 B6L or -6 L NASM35333-105 or NASM35333-37
10	.180 (4.57)		
12	.312 (7.92)		
14	.373 (9.47)		
16	.500 (12.70)		
18	.625 (15.88)	8-32UNC	NASM35338B6L or -6L NASM35333-106 or NASM35333-38
20	.625 (15.88)		
22	.750 (19.05)		
24	.800 (20.32)		

NOTES:

1. Dimensions are in inches.
2. Metric equivalents are given for information only.

FIGURE 3. Dimensions for class F - Continued.

MS3126G



Size	L max over-all length	X dia min	Y dia max	PP min
8	1.750 (44.45)	.317 (8.05)	.608 (15.44)	.250 (6.35)
10		.434 (11.02)	.734 (18.64)	
12		.548 (13.92)	.858 (21.79)	
14		.673 (17.09)	.984 (24.99)	
16		.798 (20.27)	1.110 (28.19)	
18		.899 (22.83)	1.234 (31.34)	
20	1.892 (48.06)	1.024 (26.01)	1.360 (34.54)	
22	1.953 (49.61)	1.149 (29.18)	1.484 (37.69)	
24		1.274 (32.36)	1.610 (40.89)	

NOTES:

1. Dimensions are in inches.
2. Metric equivalents are given for information only.

FIGURE 4. Dimensions for class P.

MS3126G

REQUIREMENTS:

Dimensions and configuration: See figures 1 through 4.

This connector mates with MS3120, MS3122, MS3124, MS3127 and MS3128.

Insert arrangement shall be in accordance with MIL-STD-1669.

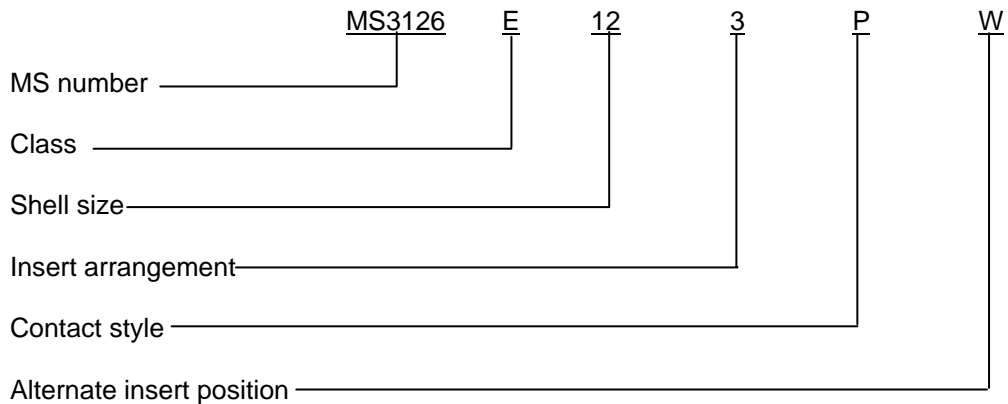
Sealing member: Bonded to vitreous insert.

Packing material shall meet the requirements of ASTM-D2000.

MS3476 is interchangeable for use except for the following:

MS3476 utilizes rear release contacts whereas this document utilizes front release contacts.

Part or Identifying Number (PIN) example:



Changes from previous issue. Marginal notations are not used in this revision to identify changes with respect to the previous issue due to the extent of the changes.

Referenced document. In addition to MIL-DTL-26482, this document references the following:

MS3120
 MS3122
 MS3124
 MS3127
 MS3128
 MS3476
 MIL-STD-1669
 SAE-AS39029/31
 SAE-AS39029/32
 ASME Y14.5M
 ASTM-D2000
 NASM35333
 NASM35338

MS3126G

CONCLUDING MATERIAL

Custodians:

Army – CR
Navy – SH
Air Force -11
DLA - CC

Preparing activity:

DLA - CC

(Project 5935-2007-184)

Review activities:

Army - AR, MI

NOTE: The activities listed above were interested in this document as of the date of this document. Since organization and responsibilities can change, you should verify the currency of the information above using the assist Online database at <http://assist.daps.dla.mil>.