

INCH-POUND

MS3122F  
 1 March 2007  
 SUPERSEDING  
 MS3122E  
 30 July 1979

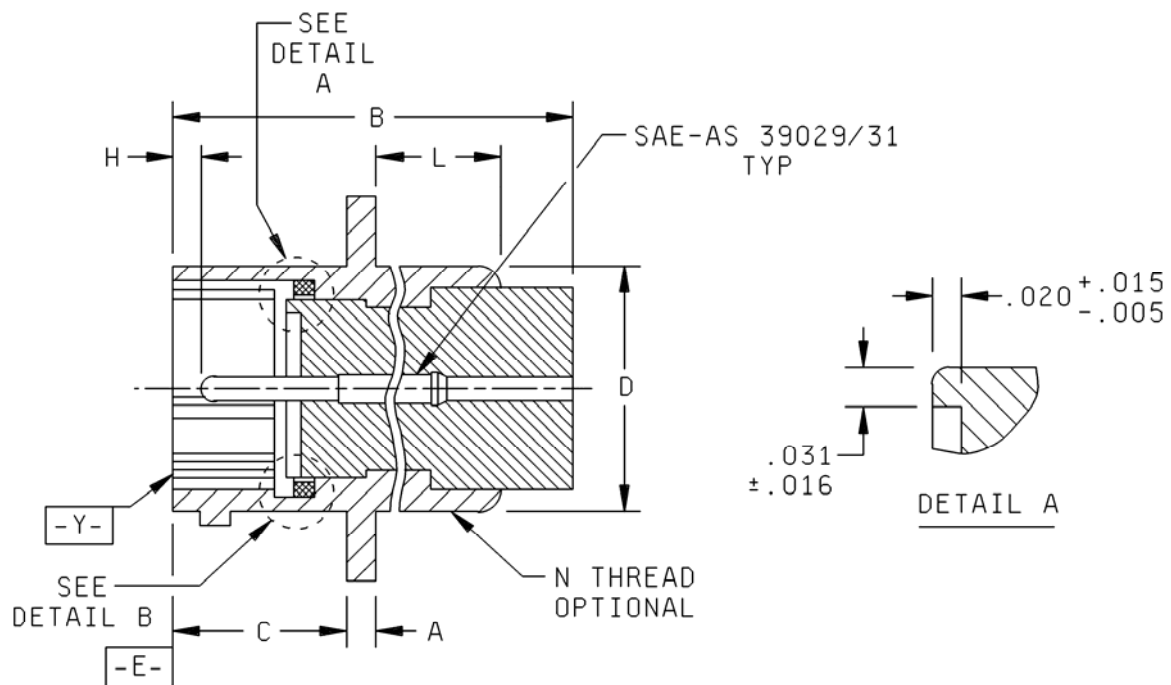
## DETAIL SPECIFICATION SHEET

CONNECTORS, RECEPTACLE, ELECTRICAL, CRIMP TYPE, BOX MOUNTING,  
 FLANGE, NO. 4 HOLES, BAYONET COUPLING, SERIES 1

Inactive for new design after 15 December 1998.

This specification is approved for use by all Departments and  
 Agencies of the Department of Defense.

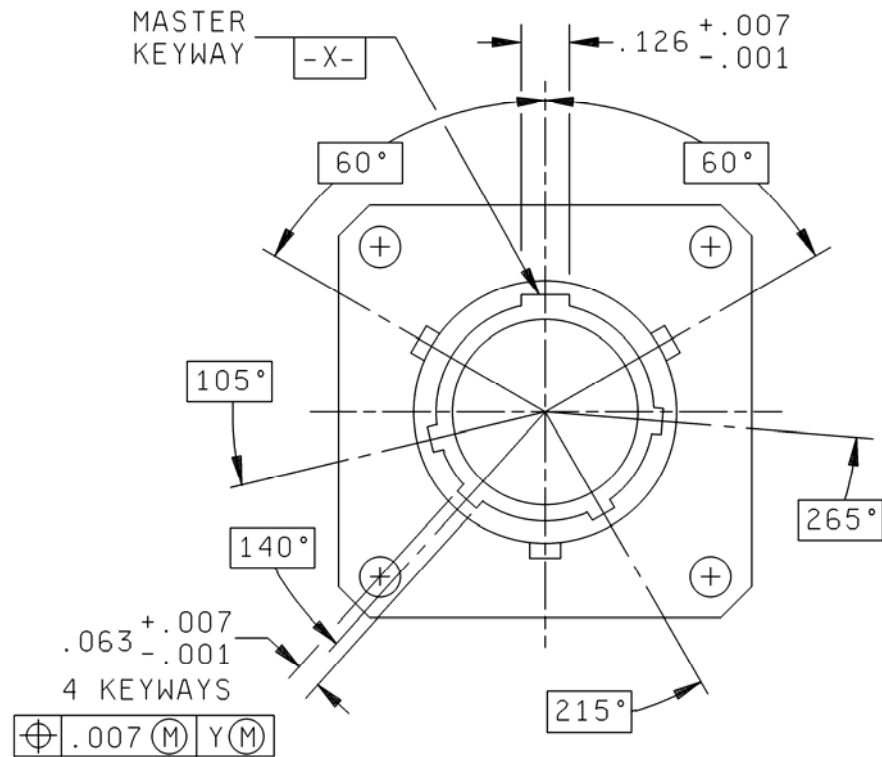
The requirements for acquiring the product described herein  
 shall consist of this specification sheet and MIL-DTL-26482.



Style P (pin insert)

FIGURE 1. Receptacle, dimensions and configurations.

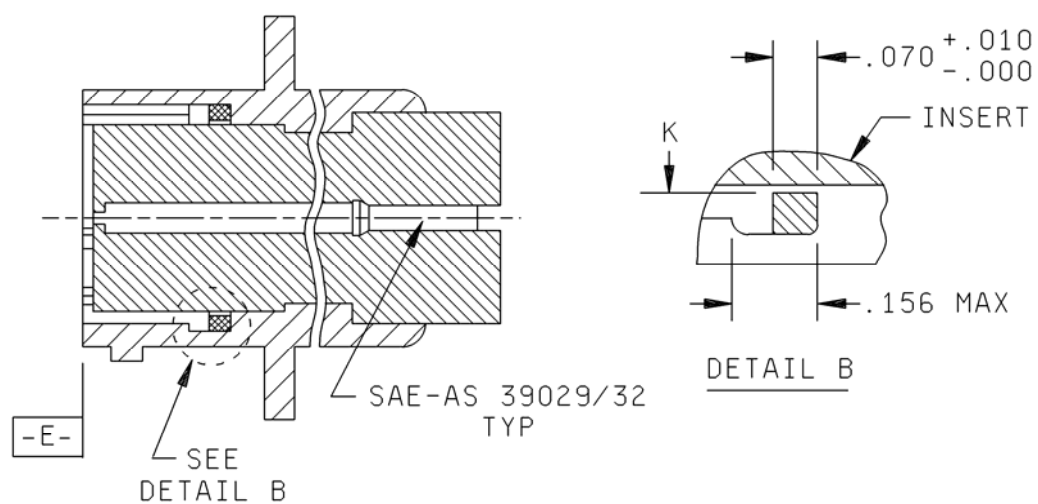
MS3122F



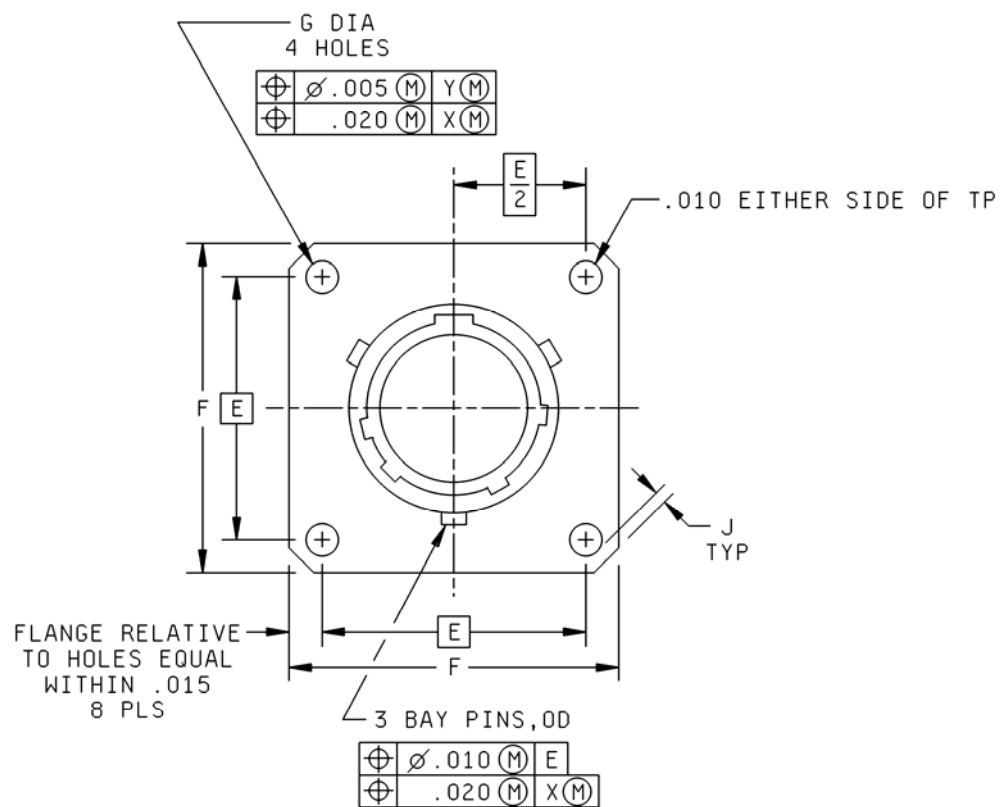
Style P (pin insert)

FIGURE 1. Receptacle, dimensions and configurations - Continued.

MS3122F



Style S (socket insert)



Style S (socket insert)

FIGURE 1. Receptacle, dimensions and configurations - Continued.

## MS3122F

Shell size	A ± .016 thick mounting flange	B max overall length	C + .031 - .000 mounting flange location	D Dia + .031 - .024 od	E (TP) mounting holes	F max length side	G ± .005 dia mounting holes
8	.062 (1.57)	1.320 (33.53)	.431 (10.95)	.438 (11.13)	.594 (15.09)	.828 (21.03)	.120 (3.05)
10				.562 (14.27)	.719 (18.26)	.954 (24.23)	
12				.688 (17.48)	.812 (20.62)	1.047 (26.59)	
14				.812 (20.62)	.906 (23.01)	1.141 (28.98)	
16				.938 (23.83)	.969 (24.61)	1.234 (31.34)	
18				1.062 (26.97)	1.062 (26.97)	1.328 (33.73)	
20	.094 (2.39)	1.367 (34.72)	.556 (14.12)	1.188 (30.18)	1.156 (29.36)	1.453 (36.91)	.147 (3.73)
22				1.312 (33.32)	1.250 (31.75)	1.578 (40.08)	
24		1.418 (36.02)	.589 (14.96)	1.438 (36.53)	1.375 (34.93)	1.703 (43.26)	

FIGURE 1. Receptacle, dimensions and configurations - Continued.

## MS3122F

Shell size	H + .010 - .020 pin contact location	J min edge distance	K max id gasket	L max	M max	N UNEF-2A thread optional
8	.085 (2.16)	.035 (.89)	.329 (8.36)	.406 (10.31)	.087 (2.21)	.4375-28
10			.457 (11.61)			.5625-24
12			.564 (14.33)			.6875-24
14			.689 (17.50)			.8125-20
16			.814 (20.68)			.9375-20
18			.907 (23.04)			1.0625-18
20	.147 (3.73)	.050 (1.27)	1.039 (26.39)		.212 (5.38)	1.1875-18
22			1.164 (29.57)			1.3125-18
24			1.289 (32.74)			1.4375-18

Inches	mm	Inches	mm
.001	0.02	.024	0.61
.005	0.13	.031	0.79
.007	0.18	.063	1.60
.010	0.25	.070	1.78
.015	0.38	.126	3.20
.016	0.41	.156	3.96
.020	0.51		

## NOTES:

1. Dimensions are in inches. Metric equivalents are given for information only.
2. The rear of the connector shall be suitable for potting in accordance with MIL-DTL-26482.
3. True position (TP) tolerances specified are in accordance with ASME Y14.5M.

FIGURE 1. Receptacle, dimensions and configurations - Continued.

## MS3122F

## REQUIREMENTS:

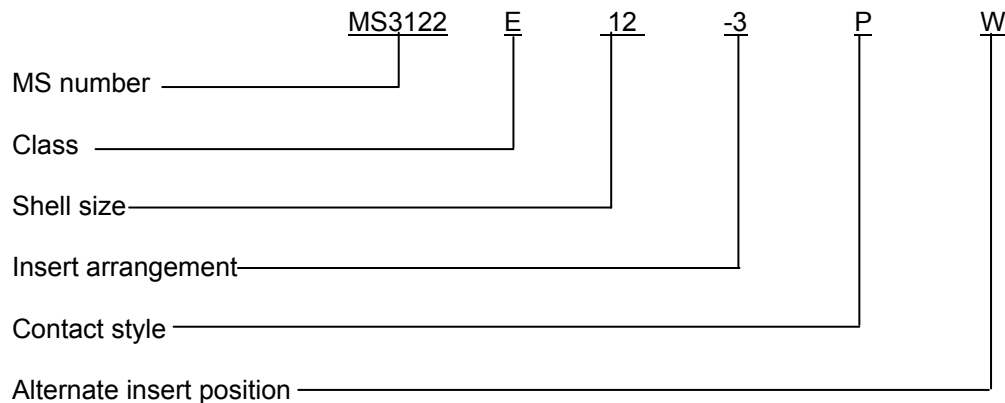
Dimensions and configurations: See figure 1.

Connector mating: This connector mates with MS3111, MS3116, MS3121 and MS3126.

For insert arrangement: See MIL-STD-1669.

Intermateability dimensions are in accordance with MIL-DTL-26482.

Part or Identifying Number (PIN) example:



Changes from previous issue. Marginal notations are not used in this revision to identify changes with respect to the previous issue due to the extent of the changes.

Referenced documents. In addition to MIL-DTL-26482, this document references the following:

MS3111  
 MS3116  
 MS3121  
 MS3126  
 MIL-STD-1669  
 ASME Y14.5M  
 SAE-AS39029/31  
 SAE-AS39029/32

## CONCLUDING MATERIAL

## Custodians:

Army – CR  
 Navy – AS  
 Air Force – 11  
 DLA – CC

Preparing activity:  
 DLA – CC

(Project 5935-4656-006)

## Review activities:

Army – AV  
 Navy – SH

NOTE: The activities listed above were interested in this document as of the date of this document. Since organizations and responsibilities can change, you should verify the currency of the information above using the ASSIST Online database at <http://assist.daps.dla.mil>.