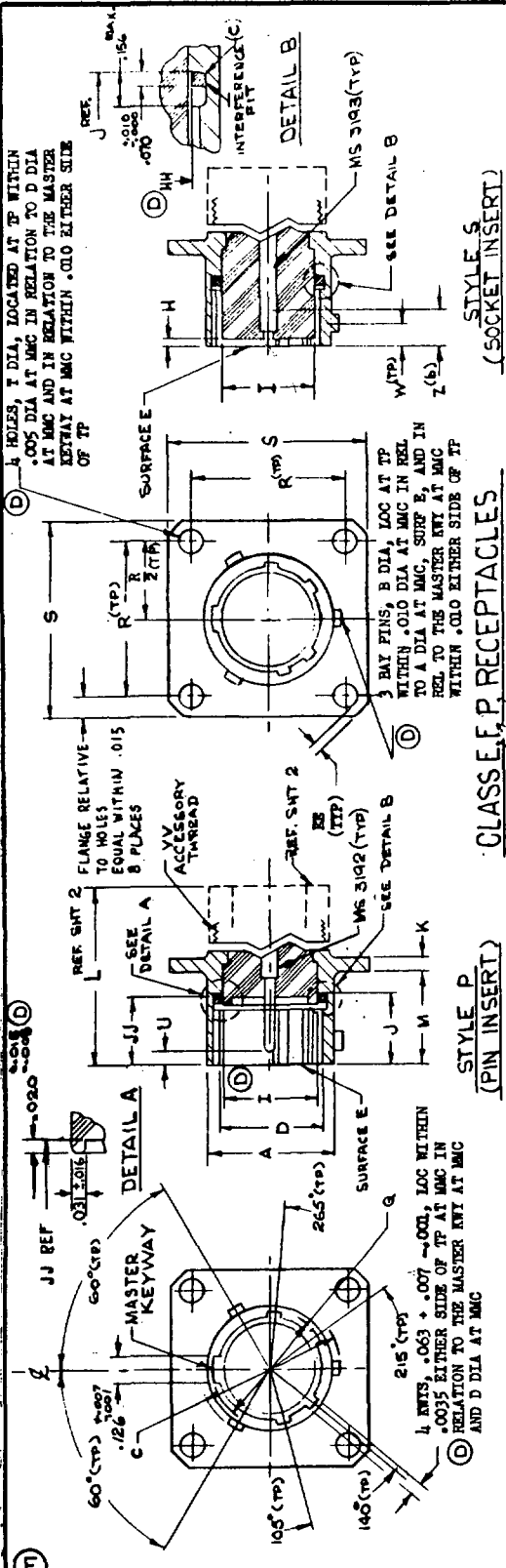


User activities:

Review activities: Navy - AS  
USAF - 11  
Army - EL

This military standard has been approved by the Department of Defense and is mandatory for use by all Departments and Agencies of the Department of Defense. Selection for all new engineering and design applications and for repetitive use shall be made from this document.



STYLE P (PIN INSERT)

CLASS E, P, RECEPTABLES (SOCKET INSERT)

STLZ	A DIA	B DIA	C DIA	D DIA	H DIA	I DIA	J DIA	K DIA	M DIA	Q DIA	R DIA	S DIA	T DIA	U DIA	W DIA	Z DIA	INSER
8	+.006	-.002	+.000	+.005	+.000	+.000	+.000	+.016	+.031	+.005	+.005	+.005	+.005	+.010	+.010	+.010	MS31708
10	+.001	-.001	+.000	+.005	+.000	+.000	+.000	+.016	+.031	+.005	+.005	+.005	+.005	+.010	+.010	+.010	MS31709
12	+.001	-.001	+.000	+.005	+.000	+.000	+.000	+.016	+.031	+.005	+.005	+.005	+.005	+.010	+.010	+.010	MS31710
14	+.001	-.001	+.000	+.005	+.000	+.000	+.000	+.016	+.031	+.005	+.005	+.005	+.005	+.010	+.010	+.010	MS31711
16	+.001	-.001	+.000	+.005	+.000	+.000	+.000	+.016	+.031	+.005	+.005	+.005	+.005	+.010	+.010	+.010	MS31712
18	+.001	-.001	+.000	+.005	+.000	+.000	+.000	+.016	+.031	+.005	+.005	+.005	+.005	+.010	+.010	+.010	MS31713
20	+.001	-.001	+.000	+.005	+.000	+.000	+.000	+.016	+.031	+.005	+.005	+.005	+.005	+.010	+.010	+.010	MS31714
22	+.001	-.001	+.000	+.005	+.000	+.000	+.000	+.016	+.031	+.005	+.005	+.005	+.005	+.010	+.010	+.010	MS31715
24	+.001	-.001	+.000	+.005	+.000	+.000	+.000	+.016	+.031	+.005	+.005	+.005	+.005	+.010	+.010	+.010	MS31716

MS NUMBER	CLASS SIZE	INSERT ARRANGEMENT	CONTACT STYLE	ALTERNATE INSERT POSITION
8	8	MS1120 E12-32W	CONTACT	ALTERNATE INSERT POSITION
10	10	MS1120 E12-32W	CONTACT	ALTERNATE INSERT POSITION
12	12	MS1120 E12-32W	CONTACT	ALTERNATE INSERT POSITION
14	14	MS1120 E12-32W	CONTACT	ALTERNATE INSERT POSITION
16	16	MS1120 E12-32W	CONTACT	ALTERNATE INSERT POSITION
18	18	MS1120 E12-32W	CONTACT	ALTERNATE INSERT POSITION
20	20	MS1120 E12-32W	CONTACT	ALTERNATE INSERT POSITION
22	22	MS1120 E12-32W	CONTACT	ALTERNATE INSERT POSITION
24	24	MS1120 E12-32W	CONTACT	ALTERNATE INSERT POSITION

INACTIVE FOR NEW DESIGN AFTER 5 SEP 1975

FOR CHANGES SEE SHEETS 1 AND 2.

P.A. Navy - AS  
Other: USAF - 11  
Army - EL

PROCUREMENT SPECIFICATION  
**MIL-C-26482**

TITLE  
**CONNECTORS, RECEPTACLE, ELECTRIC  
CRIMP-TYPE, WALL MOUNTING, FLANGE,  
№ 4 HOLES, BAYONET COUPLING**

SUPERSEDES:

**MILITARY STANDARD**  
**MS 3120**  
SHEET 1 OF 2

APPROVED 5 OCT. 61 REVISED 18 JULY 1962 24 AUG 62 14 FEB 64 15 FEB 67 5 SEP 75

FOR DESIGN PURPOSES THIS STANDARD TAKES PRECEDENCE OVER PROCUREMENT DOCUMENTS REFERENCED HEREIN. REFERENCED DOCUMENTS SHALL BE OF THE ISSUE IN EFFECT ON DATE OF INDICATIONS FOR BID.

FED. SUP CLASS  
5935

FRONT PANEL REAR PANEL  
MTG. (REF.) MTG. (REF.)

This military standard has been approved by the Department of Defense and is mandatory for use by all Departments and Agencies of the Department of Defense. Selection for all new engineering and design applications and for repetitive use shall be made from this document.

Review activities: Navy - AS  
USAF - 11  
Army - EL

User activities:

P.A		TITLE		MILITARY STANDARD		
Navy - AS Other Cust USAF - 11 Army - EL		CONNECTORS, RECEPTACLE, ELECTRIC, CRIMP TYPE, WALL MOUNTING, FLANGE, N# 4 HOLES, BAYONET COUPLING		MS 3120		
PROCUREMENT SPECIFICATION MIL-C-26482		SUPERSEDES:		SHEET 2 OF 2		
CLASS E		L	MAX OVER-ALL LENGTH	Y	DIA MAX OD	
		SIZE				
CLASS F		L	MAX OVER-ALL LENGTH	X	DIA MIN ID	
		SIZE				
				Y	MAX	
				V	MAX CLOSED	
				Z	MIN	
				ZZ	(2-REQ'D)	
				YZ	(2-REQ'D)	
				N(h)		
CLASS P		L	MAX OVER-ALL LENGTH	X	DIA MIN ID	
		SIZE				
				Y	DIA MAX OD	
FEDERAL SUPPLY CLASS 5935						
APPROVED 5 Oct 61		REVISED (E) FOR CLARITY SEE SHEETS 1 AND 2.				