

INCH-POUND

MS3119E  
w/AMENDMENT 2  
3 April 2009  
SUPERSEDING  
w/AMENDMENT 1  
31 July 2008

DETAIL SPECIFICATION SHEET

ADAPTER, CONNECTORS, RECEPTACLE, ELECTRICAL, THRU-BULKHEAD  
MOUNTING, FLANGE, BAYONET COUPLING, SERIES 1

Inactive for new design after 15 December 1998.

This specification is approved for use by all Departments  
and Agencies of the Department of Defense.

The requirements for acquiring the product described herein  
shall consist of this specification sheet and MIL-DTL-26482.

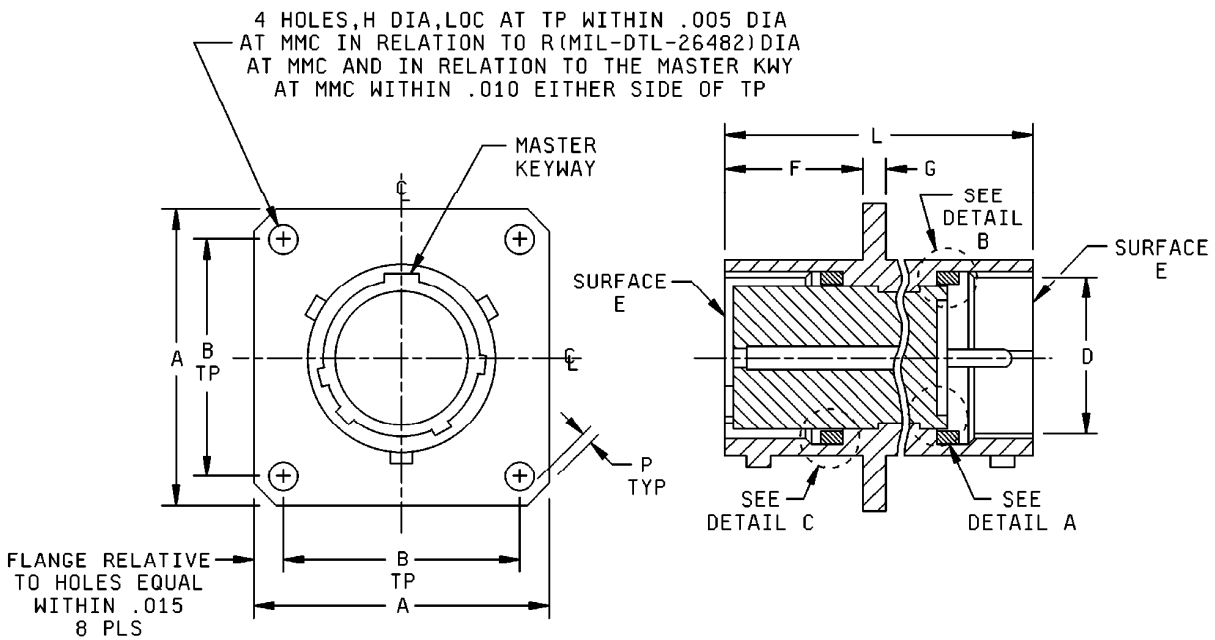


FIGURE 1. Receptacle, class E, dimensions and configurations.

MS3119E  
w/AMENDMENT 2

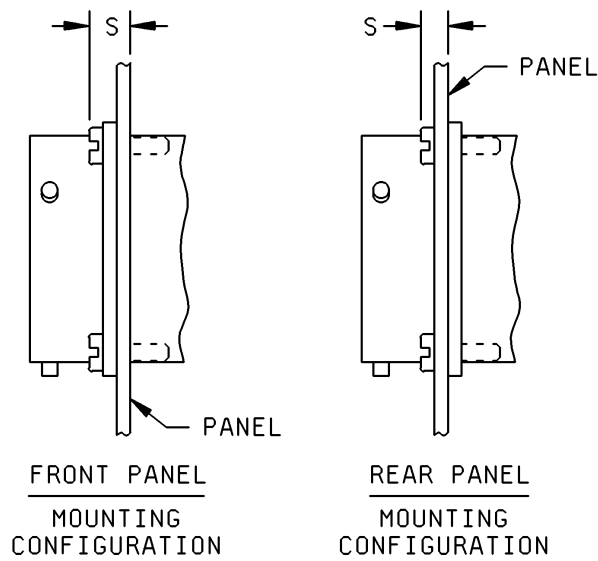
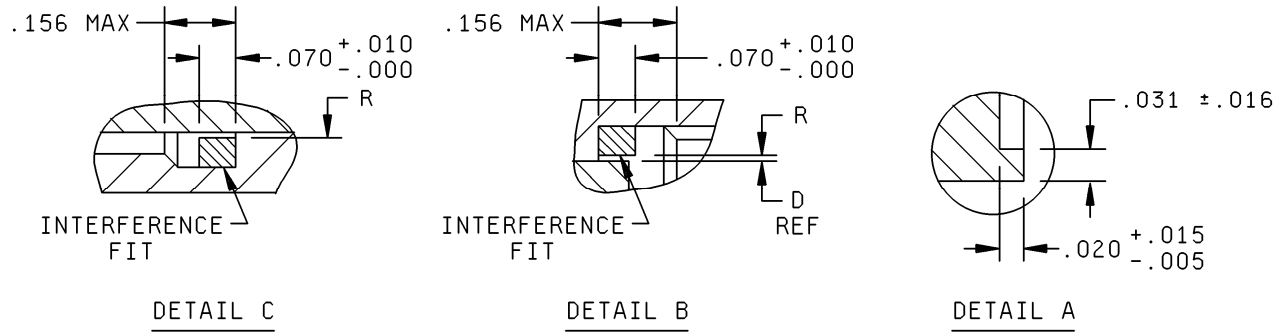


FIGURE 1. Receptacle, class E, dimensions and configurations - Continued.

MS3119E  
w/AMENDMENT 2

Shell size	A max length side	B (TP) mounting holes	D max insert dia pin	F + .031 - .000 mounting flange location socket side	G ± .016 thick mounting flange	H ± .005 dia mounting holes
8	.828 (21.03)	.594 (15.09)	.347 (8.81)	.562 (14.27)	.062 (1.57)	.120 (3.05)
10	.954 (24.23)	.719 (18.26)	.464 (11.79)			
12	1.047 (26.59)	.812 (20.62)	.581 (14.76)			
14	1.141 (28.98)	.906 (23.01)	.703 (17.86)			
16	1.234 (31.34)	.969 (24.61)	.828 (21.03)			
18	1.328 (33.73)	1.062 (26.97)	.938 (23.83)			
20	1.453 (36.91)	1.156 (29.36)	1.063 (27.00)	.688 (17.48)	.094 (2.39)	.147 (3.73)
22	1.578 (40.08)	1.250 (31.75)	1.188 (30.18)			
24	1.703 (43.26)	1.375 (34.93)	1.313 (33.35)			

Shell size	L max overall length	P min edge distance	R max ID gasket	S max panel and screw head rear mount (for front mount, S = S-G)
8	1.125 (28.58)	.035 (0.89)	.378 (9.60)	.218 (5.54)
10			.506 (12.85)	
12			.618 (15.70)	
14			.745 (18.92)	
16			.872 (22.15)	
18			.972 (24.69)	
20	1.406 (35.71)	.050 (1.27)	1.097 (27.86)	.344 (8.74)
22			1.222 (31.04)	
24			1.347 (34.21)	.311 (7.90)

FIGURE 1. Receptacle, class E, dimensions and configurations - Continued.

MS3119E  
w/AMENDMENT 2

Inches	mm	Inches	mm	Inches	mm	Inches	mm
.005	0.13	.015	0.38	.020	0.51	.070	1.78
.010	0.25	.016	0.41	.031	0.79		

NOTES:

1. Dimensions are in inches.
2. Metric equivalents are given for information only.
3. True position (TP) tolerances specified are in accordance with ASME Y14.5M.

FIGURE 1. Receptacle, class E, dimensions and configurations - Continued.

REQUIREMENTS:

Dimensions and configurations: See figure 1.

Connector mating: This connector mates with MS3116 and MS3126.

For insert arrangements: See MIL-STD-1669.

Finishes: A finish designator shall not be included in the PIN when finish W is required. See MIL-DTL-26482 for optional finishes, including D, T and Z.

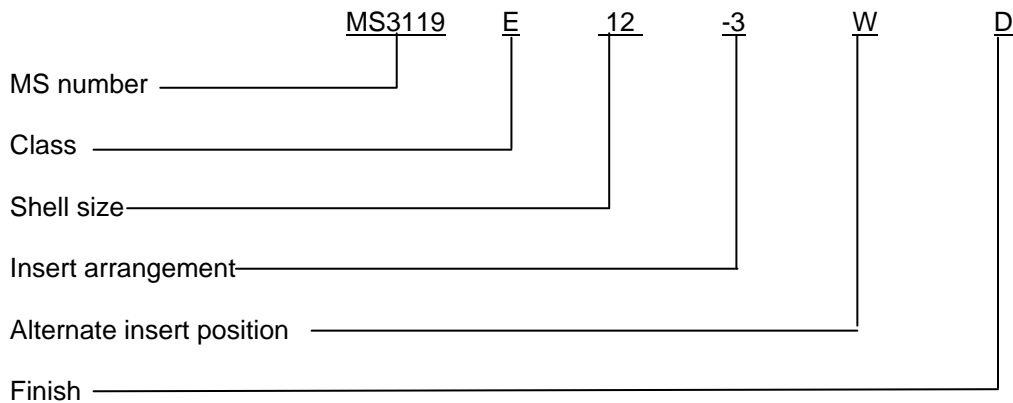
Intermateability dimensions are in accordance with MIL-DTL-26482.

Effectivity date: The effective changes to this specification are immediate, from the date of this specification. Parts shall be date coded in accordance with MIL-DTL-26482 (year and week of manufacture of product).

Disposition of previous stock shall be in accordance with MIL-DTL-26482.

Application guidance: Users that require a specified F dimension on the pin contact side of the connector should use DSCC drawing 09005.

Part or Identifying Number (PIN) example:



Note: When class W is required, no finish designator is used (class W is the default finish).

MS3119E  
w/AMENDMENT 2

Amendment notations: The margins of this specification are marked with vertical lines to indicate where modifications from this amendment were made. This was done as a convenience only and the Government assumes no liability whatsoever for any inaccuracies in these notations. Bidders and contractors are cautioned to evaluate the requirements of this document based on the entire content irrespective of the marginal notations.

Referenced documents. In addition to MIL-DTL-26482, this document references the following:

MS3116  
MS3126  
MIL-STD-1669  
ASME Y14.5M  
DSCC drawing 09005

CONCLUDING MATERIAL

Custodians:

Army – CR  
Navy – AS  
Air Force – 85  
DLA – CC

Preparing activity:

DLA - CC

(Project 5935-2009-051)

Review activities:

Army – AV  
Navy – EC  
Air Force – 99

NOTE: The activities listed above were interested in this document as of the date of this document. Since organizations and responsibilities can change, you should verify the currency of the information above using the ASSIST Online database at <http://assist.daps.dla.mil>.