

INCH-POUND

MS3119E
w/AMENDMENT 1
31 July 2008
SUPERSEDING
MS3119E
1 March 2007

DETAIL SPECIFICATION SHEET

ADAPTER, CONNECTORS, RECEPTACLE, ELECTRICAL, THRU-BULKHEAD
MOUNTING, FLANGE, BAYONET COUPLING, SERIES 1

Inactive for new design after 15 December 1998.

This specification is approved for use by all Departments and
Agencies of the Department of Defense.

The requirements for acquiring the product described herein
shall consist of this specification sheet and MIL-DTL-26482.

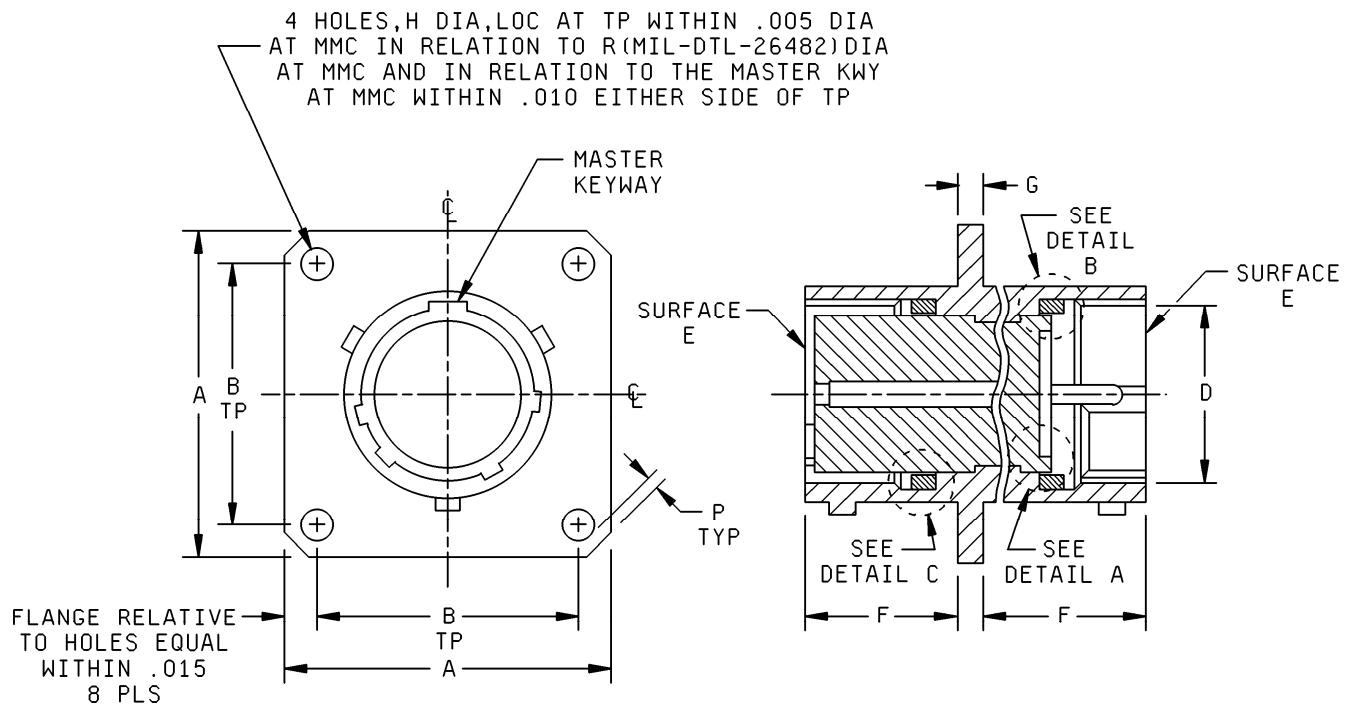


FIGURE 1. Receptacle, class E, dimensions and configurations.

MS3119E
w/AMENDMENT 1

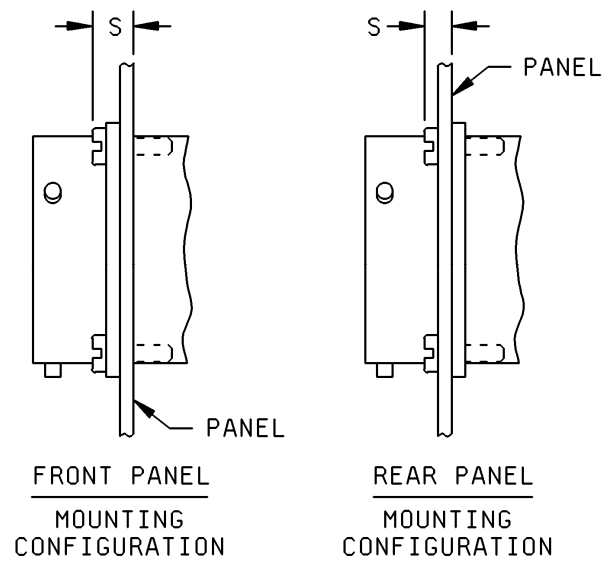
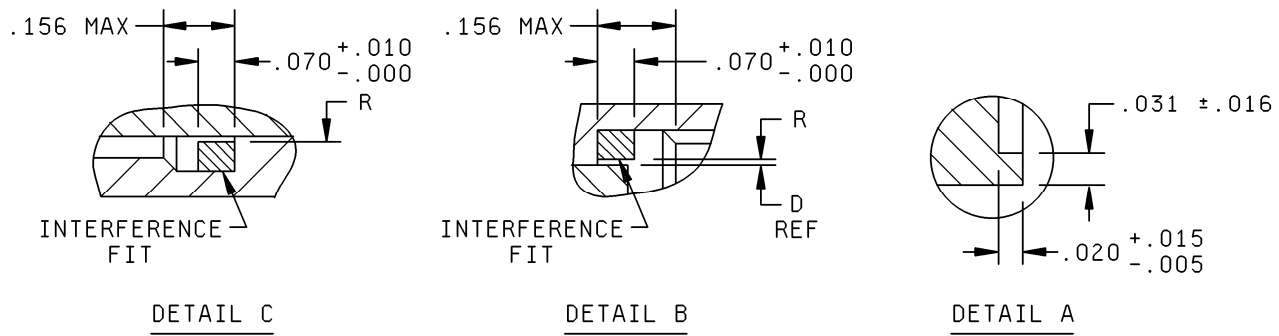


FIGURE 1. Receptacle, class E, dimensions and configurations - Continued.

MS3119E
w/AMENDMENT 1

| Shell size | A max length side | B (TP) mounting holes | D max insert dia pin | F + .031 - .000 mounting flange location socket side | G ± .016 thick mounting flange | H ± .005 dia mounting holes |
|------------|----------------------------|--------------------------------|----------------------------------|--|--|---|
| 8 | .828 (21.03) | .594 (15.09) | .347 (8.81) | .531 (13.49) | .062 (1.57) | .120 (3.05) |
| 10 | .954 (24.23) | .719 (18.26) | .464 (11.79) | | | |
| 12 | 1.047 (26.59) | .812 (20.62) | .581 (14.76) | | | |
| 14 | 1.141 (28.98) | .906 (23.01) | .703 (17.86) | | | |
| 16 | 1.234 (31.34) | .969 (24.61) | .828 (21.03) | | | |
| 18 | 1.328 (33.73) | 1.062 (26.97) | .938 (23.83) | | | |
| 20 | 1.453 (36.91) | 1.156 (29.36) | 1.063 (27.00) | .656 (16.66) | .094 (2.39) | .147 (3.73) |
| 22 | 1.578 (40.08) | 1.250 (31.75) | 1.188 (30.18) | | | |
| 24 | 1.703 (43.26) | 1.375 (34.93) | 1.313 (33.35) | | | |

| Shell size | P min edge distance | R max ID gasket | S max panel and screw head rear mount. (front mount S = S-G) |
|------------|---------------------------|-----------------------|---|
| 8 | .035 (0.89) | .378 (9.60) | .187 (4.75) |
| 10 | | .506 (12.85) | |
| 12 | | .618 (15.70) | |
| 14 | | .745 (18.92) | |
| 16 | | .872 (22.15) | |
| 18 | | .972 (24.69) | |
| 20 | .050 (1.27) | 1.097 (27.86) | .312 (7.92) |
| 22 | | 1.222 (31.04) | |
| 24 | | 1.347 (34.21) | |

FIGURE 1. Receptacle, class E, dimensions and configurations - Continued.

MS3119E
w/AMENDMENT 1

| Inches | mm |
|--------|------|
| .005 | 0.13 |
| .010 | 0.25 |
| .015 | 0.38 |
| .016 | 0.41 |
| .020 | 0.51 |
| .031 | 0.79 |
| .070 | 1.78 |

NOTES:

1. Dimensions are in inches.
2. Metric equivalents are given for information only.
3. True position (TP) tolerances specified are in accordance with ASME Y14.5M.

FIGURE 1. Receptacle, class E, dimensions and configurations - Continued.

REQUIREMENTS:

Dimensions and configurations: See figure 1.

Connector mating: This connector mates with MS3111, MS3116, MS3121 and MS3126.

For insert arrangement: See MIL-STD-1669.

Intermateability dimensions are in accordance with MIL-DTL-26482.

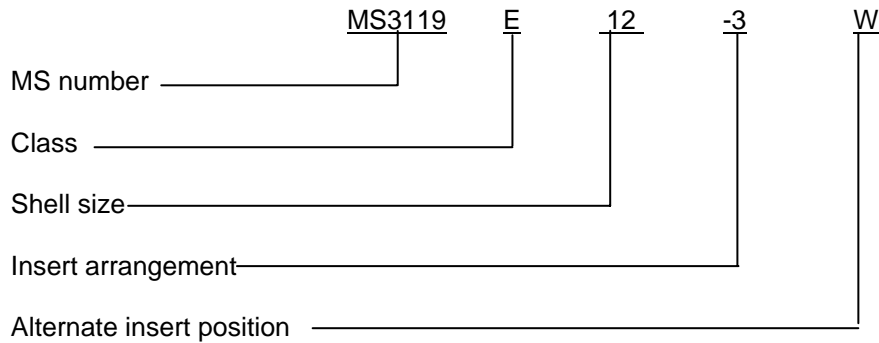
Effectivity date: The effective changes to this specification are immediate, from the date of this specification. Parts shall be date marked in accordance with MIL-DTL-26482 (year and week of manufacture of product).

Disposition of previous stock shall be in accordance with MIL-DTL-26482.

Application guidance: MS3119 product with a lot date code prior to the date of this document are produced to the design of the previous revision. These connectors may have a shorter shell length on the pin side and may not be suitable for all applications. Other dimensions have been changed to resolve the mating issue relative to the pin side of the connector.

MS3119E
w/AMENDMENT 1

Part or Identifying Number (PIN) example:



Amendment notations: The margins of this specification are marked with vertical lines to indicate where modifications from this amendment were made. This was done as a convenience only and the Government assumes no liability whatsoever for any inaccuracies in these notations. Bidders and contractors are cautioned to evaluate the requirements of this document based on the entire content irrespective of the marginal notations.

Referenced documents. In addition to MIL-DTL-26482, this document references the following:

MS3111
MS3116
MS3121
MS3126
MIL-STD-1669
ASME Y14.5M

CONCLUDING MATERIAL

Custodians:

Army – CR
Navy – AS
Air Force – 85
DLA – CC

Preparing activity:

DLA - CC

(Project 5935-2007-270)

Review activities:

Army – AV
Navy – EC
Air Force – 99

NOTE: The activities listed above were interested in this document as of the date of this document. Since organizations and responsibilities can change, you should verify the currency of the information above using the ASSIST Online database at <http://assist.daps.dla.mil>.