

INCH-POUND

MS3119E  
 1 March 2007  
 SUPERSEDING  
 MS3119D  
 31 July 1978

## DETAIL SPECIFICATION SHEET

CONNECTORS, RECEPTACLE, ELECTRICAL, THRU-BULKHEAD  
 MOUNTING, FLANGE, BAYONET COUPLING, SERIES 1

Inactive for new design after 15 December 1998.

This specification is approved for use by all Departments and  
 Agencies of the Department of Defense.

The requirements for acquiring the product described herein  
 shall consist of this specification sheet and MIL-DTL-26482.

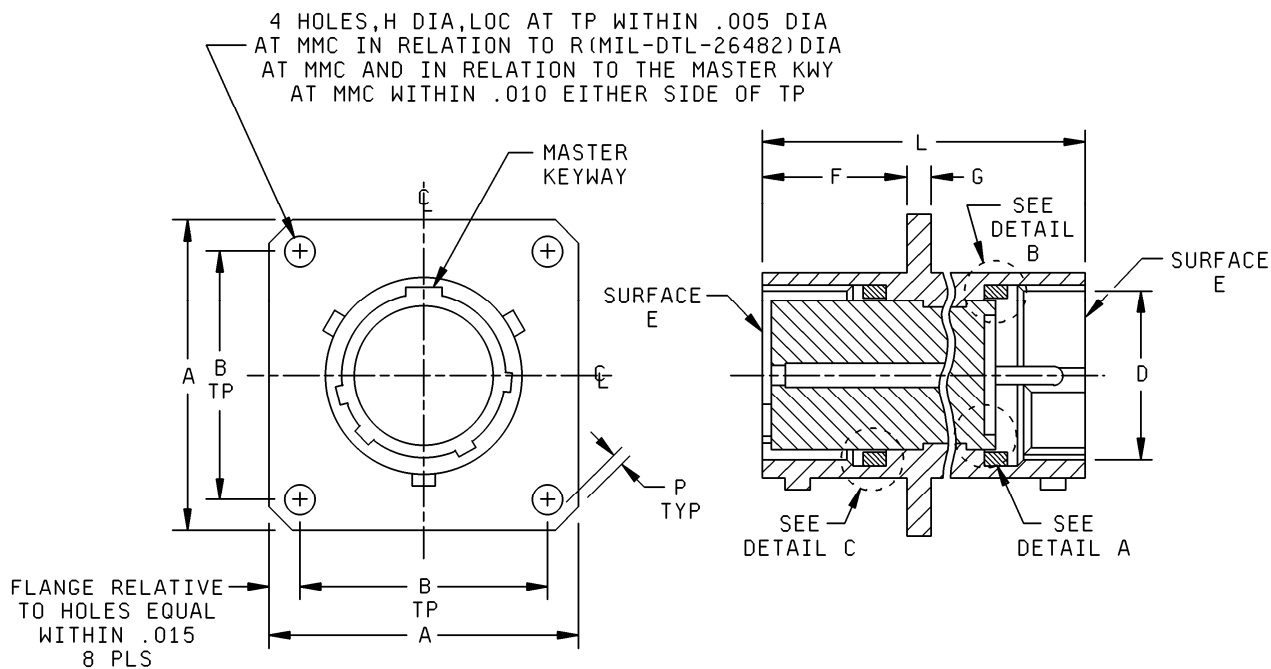


FIGURE 1. Receptacle, class E, dimensions and configurations.

MS3119E

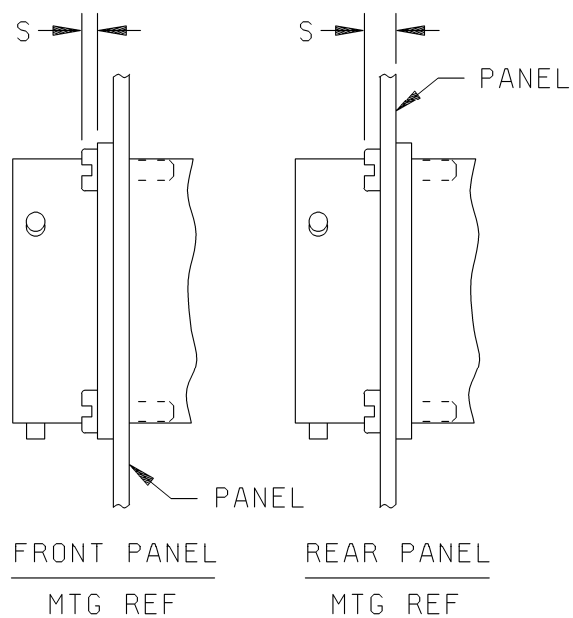
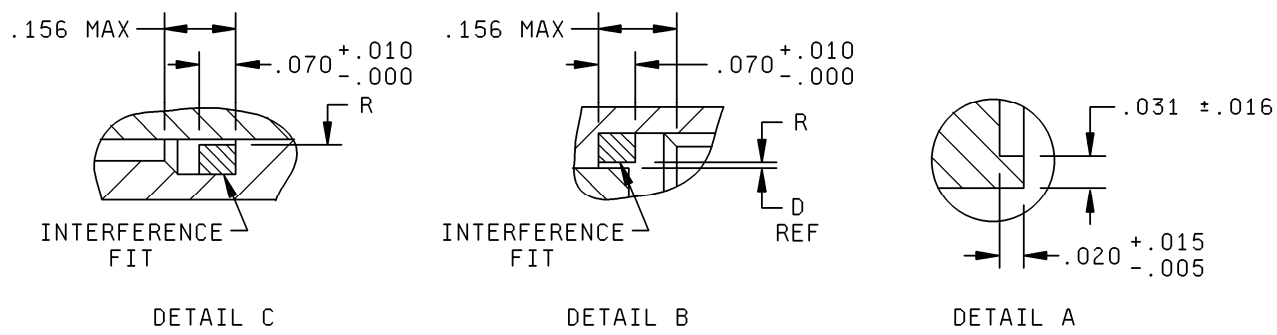


FIGURE 1. Receptacle, class E, dimensions and configurations - Continued.

## MS3119E

Shell size	A max length side	B (TP) mounting holes	D max insert dia pin	F + .031 - .000 mounting flange location	G $\pm$ .016 thick mounting flange	H $\pm$ .005 dia mounting holes
8	.828 (21.03)	.594 (15.09)	.347 (8.81)	.562 (14.27)	.062 (1.57)	.120 (3.05)
10	.954 (24.23)	.719 (18.26)	.464 (11.79)			
12	1.047 (26.59)	.812 (20.62)	.581 (14.76)			
14	1.141 (28.98)	.906 (23.01)	.703 (17.86)			
16	1.234 (31.34)	.969 (24.61)	.828 (21.03)			
18	1.328 (33.73)	1.062 (26.97)	.938 (23.83)			
20	1.453 (36.91)	1.156 (29.36)	1.063 (27.00)	.688 (17.48)	.094 (2.39)	.147 (3.73)
22	1.578 (40.08)	1.250 (31.75)	1.188 (30.18)			
24	1.703 (43.26)	1.375 (34.93)	1.313 (33.35)			

Shell size	L max overall length	P min edge distance	R max ld gasket	S max panel and screw head	
8	1.125 (28.58)	.035 (.89)	.378 (9.60)	.218 (5.54)	
10			.506 (12.85)		
12			.618 (15.70)		
14			.745 (18.92)		
16			.872 (22.15)		
18			.972 (24.69)		
20	1.406 (35.71)	.050 (1.27)	1.097 (27.86)	.344 (8.74)	
22			1.222 (31.04)		
24			1.347 (34.21)		.311 (7.90)

FIGURE 1. Receptacle, class E, dimensions and configurations - Continued.

## MS3119E

Inches	mm
.005	0.13
.010	0.25
.015	0.38
.016	0.41
.020	0.51
.031	0.79
.070	1.78

## NOTES:

1. Dimensions are in inches.
2. Metric equivalents are given for information only.
3. True position (TP) tolerances specified are in accordance with ASME Y14.5M.

FIGURE 1. Receptacle, class E, dimensions and configurations - Continued.

## REQUIREMENTS:

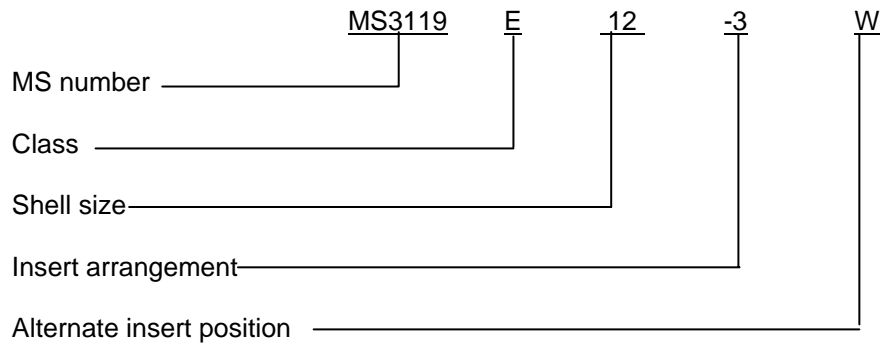
Dimensions and configurations: See figure 1.

Connector mating: This connector mates with MS3111, MS3116, MS3121 and MS3126.

For insert arrangement: See MIL-STD-1669.

Intermateability dimensions are in accordance with MIL-DTL-26482.

Part or Identifying Number (PIN) example:



Changes from previous issue. Marginal notations are not used in this revision to identify changes with respect to the previous issue due to the extent of the changes.

MS3119E

Referenced documents. In addition to MIL-DTL-26482, this document references the following:

MS3111  
MS3116  
MS3121  
MS3126  
MIL-STD-1669  
ASME Y14.5M

CONCLUDING MATERIAL

Custodians:

Army – CR  
Navy – AS  
Air Force – 11  
DLA – CC

Preparing activity:  
DLA - CC

(Project 5935-4656-005)

Review activities:

Army – AV  
Navy – EC  
Air Force – 99

NOTE: The activities listed above were interested in this document as of the date of this document. Since organizations and responsibilities can change, you should verify the currency of the information above using the ASSIST Online database at <http://assist.daps.dla.mil>.