

INCH-POUND

MS3111E
 29 April 2009
 SUPERSEDING
 MS3111D
 1 March 2007

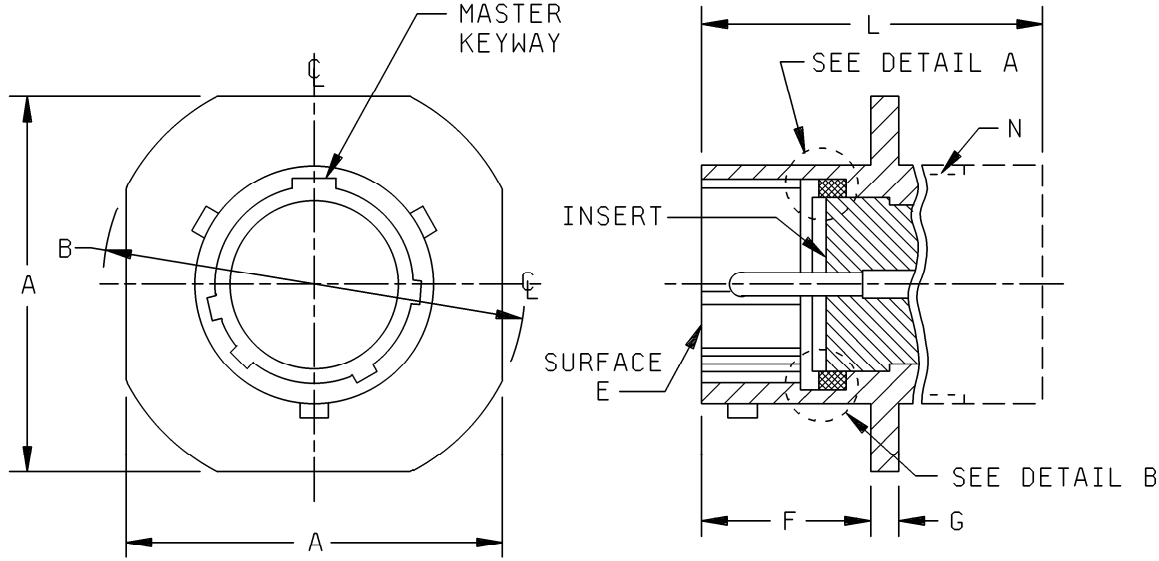
DETAIL SPECIFICATION SHEET

CONNECTORS, PLUG, ELECTRICAL, SOLDER TYPE, CABLE CONNECTING,
 BAYONET COUPLING, SERIES 1, CLASSES E, F, J AND P

Inactive for new design after 15 December 1998.
 For new design, use MS3476.

This specification is approved for use by all Departments and
 Agencies of the Department of Defense.

The requirements for acquiring the product described herein
 shall consist of this specification sheet and MIL-DTL-26482.



STYLE P
 PIN INSERT

FIGURE 1. Plug, classes E, F, J, and P, pin and socket inserts.

MS3111E

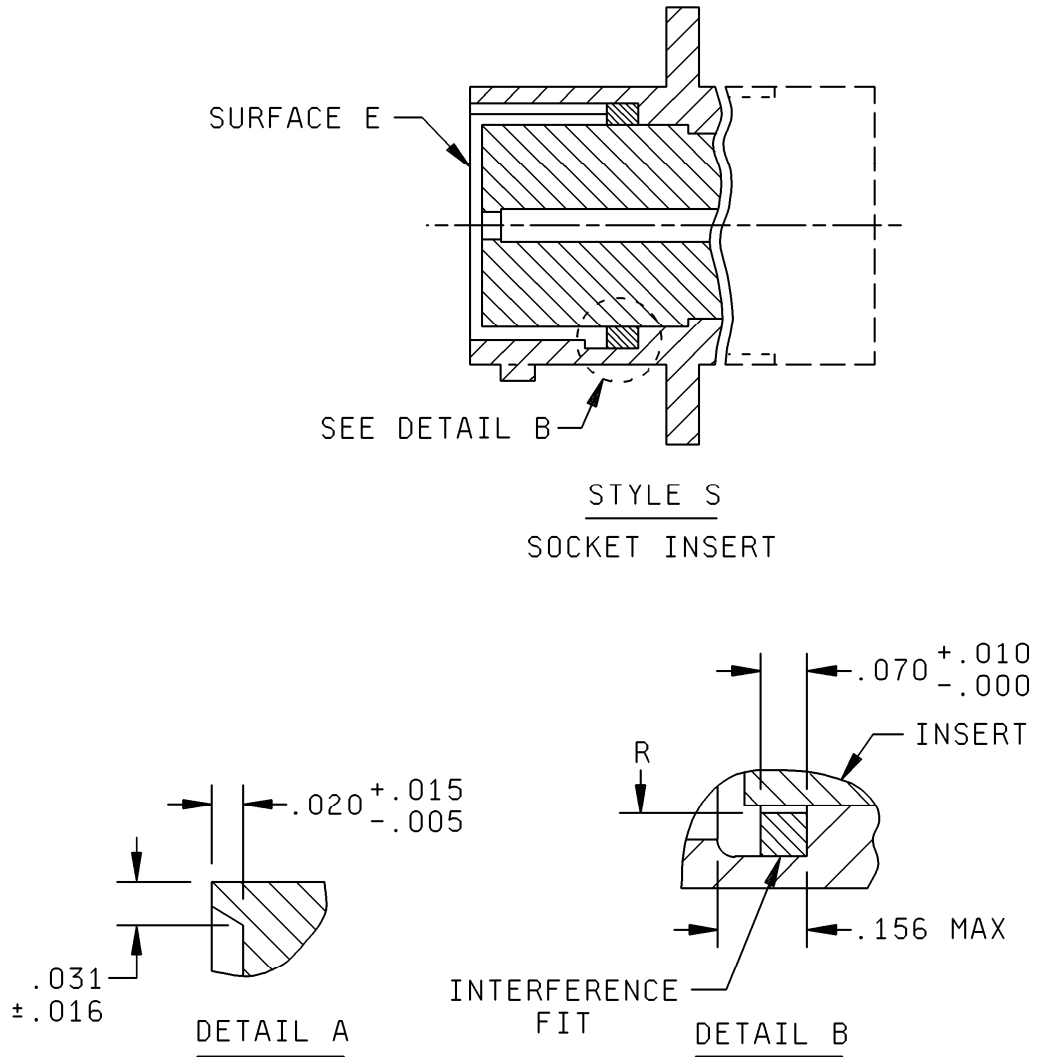


FIGURE 1. Plug, classes E, F, J, and P, pin and socket inserts - Continued.

MS3111E

Shell size	A max length	B dia ± .020 across flange corners	F + .031 - .000 mounting flange location	G ± .016 thick mounting flange	N UNEF-2A accessory thread	R max ID gasket
8	.828 (21.03)	.938 (23.83)	.400 (10.16)	.094 (2.39)	.4375-28	.329 (8.36)
10	.954 (24.23)	1.062 (26.97)			.5625-24	.457 (11.61)
12	1.047 (26.59)	1.156 (29.36)			.6875-24	.564 (14.33)
14	1.141 (28.98)	1.250 (31.75)			.8125-20	.689 (17.50)
16	1.234 (31.34)	1.344 (34.14)			.9375-20	.814 (20.68)
18	1.328 (33.73)	1.438 (36.53)			1.0625-18	.907 (23.04)
20	1.453 (36.91)	1.562 (39.67)	.535 (13.59)	.115 (2.92)	1.1875-18	1.039 (26.39)
22	1.578 (40.08)	1.688 (42.88)			1.3125-18	1.164 (29.57)
24	1.700 (43.18)	1.812 (46.02)			.558 (14.17)	1.4375-18

Inches	mm	Inches	mm
.005	0.13	.020	0.51
.010	0.25	.031	0.79
.015	0.38	.070	1.78
.016	0.41	.156	3.96

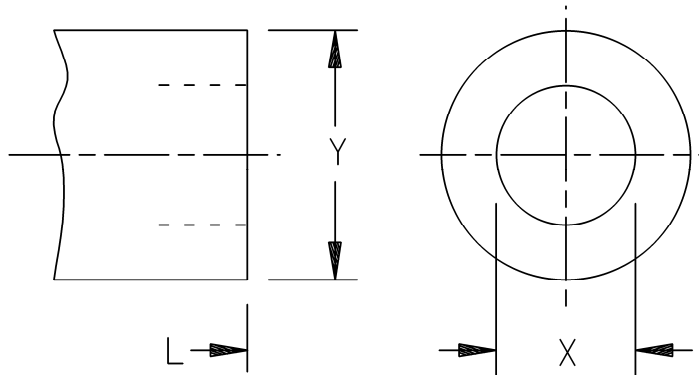
INSERT STYLES P AND S

NOTES:

1. Dimensions are in inches. Metric equivalents are given for information only.
2. True position (TP) tolerances specified are in accordance with ASME Y14.5M.
3. Interchangeability dimensions shall be in accordance with MIL-DTL-26482.

FIGURE 1. Plug, classes E, F, J, and P, pin and socket inserts - Continued.

MS3111E



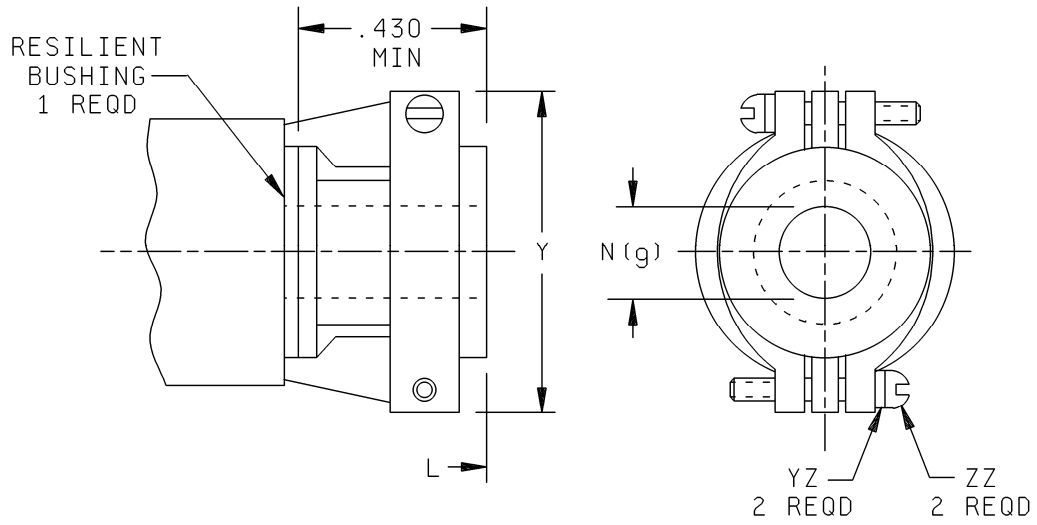
Shell size	L max overall length	X dia min ID	Y dia max OD
8	1.328 (33.73)	.259 (6.58)	.608 (15.44)
10		.359 (9.12)	.734 (18.64)
12		.469 (11.91)	.858 (21.79)
14		.589 (14.96)	.984 (24.99)
16		.727 (18.47)	1.110 (28.19)
18		.779 (19.79)	1.234 (31.34)
20	1.531 (38.89)	.901 (22.89)	1.360 (34.54)
22		1.009 (25.63)	1.484 (37.69)
24	1.594 (40.49)	1.123 (28.52)	1.610 (40.89)

NOTES:

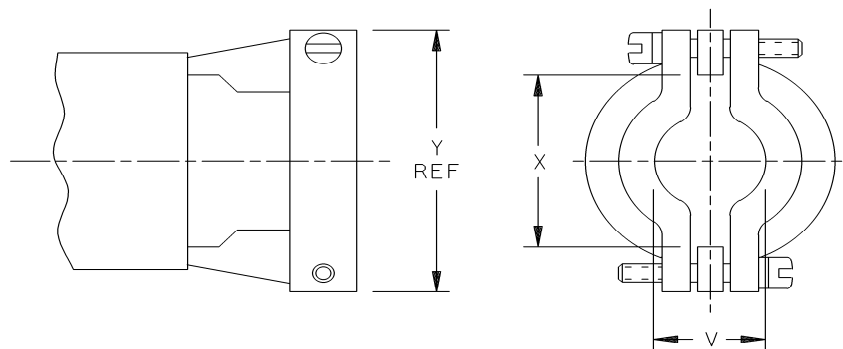
1. Dimensions are in inches. Metric equivalents are given for information only.
2. True position (TP) tolerances specified are in accordance with ASME Y14.5M.
3. Interchangeability dimensions shall be in accordance with MIL-DTL-26482.

FIGURE 2. Plug, rear accessories configurations, class E.

MS3111E



CLASS F, WITH BUSHING



CLASS F, WITH BUSHING REMOVED

FIGURE 3. Plug, rear accessories configurations, class F.

MS3111E

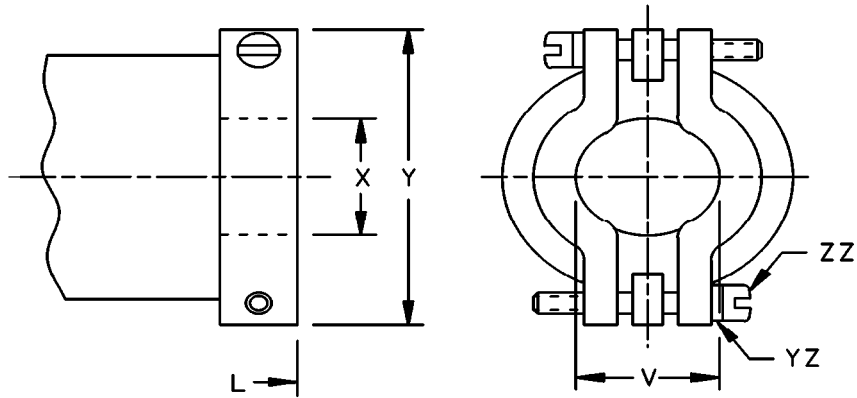
Shell size	L max overall length	X dia min open	Y dia max	N (see note 4) $\pm .010$ free dia	ZZ screw threads	YZ (see note 5) Lockwashers NASM 35338 or NASM 35333 types
8	1.922 (48.82)	.234 (5.94)	.828 (21.03)	.125 (3.18)	6-32 UNC	NASM 35338 -98 or -41 NASM 35333 -105 or -37
10		.297 (7.54)	.891 (22.63)	.188 (4.78)		
12		.422 (10.72)	1.016 (25.81)	.312 (7.92)		
14		.547 (13.89)	1.161 (29.49)	.375 (9.53)		
16	2.047 (51.99)	.609 (15.47)	1.203 (30.56)	.500 (12.70)	8-32 UNC	NASM 35338 -99 or -42 NASM 35333 -106 or -38
18	2.078 (52.78)	.734 (18.64)	1.469 (37.31)	.625 (15.88)		
20	2.344 (59.54)			.625 (15.88)		
22		.922 (23.42)	1.656 (42.06)	.750 (19.05)		
24	2.406 (61.11)	.984 (24.99)	1.750 (44.45)	.800 (20.32)		

NOTES:

1. Dimensions are in inches. Metric equivalents are given for information only.
2. True position (TP) tolerances specified are in accordance with ASME Y14.5M.
3. Intermateability dimensions shall be in accordance with MIL-DTL-26482.
4. Use MS3420 bushing if reduced opening is required.
5. Lockwashers may be captivated.

FIGURE 3. Plug, rear accessories configurations, class F – Continued.

MS3111E



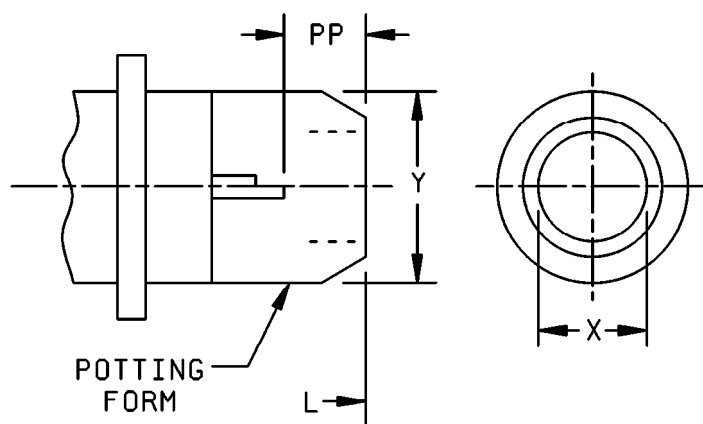
Shell size	L max overall length	V max closed	X ID gland seal min range		Y dia max	ZZ screw threads	YZ (see note 4) Lockwashers NASM35338 or NASM35333 types
			Closed	Open			
8	2.271 (57.68)	.157 (3.99)	.168 (4.27)	.230 (5.84)	.828 (21.03)	6-32 UNC	NASM35338 - 98 or -41 NASM35333- 105 or -37
10		.187 (4.75)	.205 (5.21)	.312 (7.92)	.891 (22.63)		
12	2.411 (61.24)	.281 (7.14)	.338 (8.59)	.442 (11.23)	1.016 (25.81)		
14	2.599 (66.01)	.325 (8.26)	.416 (10.57)	.539 (13.69)	1.141 (28.98)		
16	2.943 (74.75)	.356 (9.04)	.550 (13.97)	.616 (15.65)	1.203 (30.56)		
18	3.172 (80.57)	.456 (11.58)	.600 (15.24)	.672 (17.07)	1.469 (37.31)		
20	3.610 (91.69)	.519 (13.18)	.635 (16.13)	.747 (18.97)	1.656 (42.06)	8-32 UNC	NASM35338 -99 or -42 NASM35333- 106 or -38
22	3.766 (95.66)		.670 (17.02)	.846 (21.49)			
24	3.985 (101.22)	.657 (16.69)	.760 (19.30)	.894 (22.71)	1.750 (44.45)		

NOTES:

1. Dimensions are in inches. Metric equivalents are given for information only.
2. True position (TP) tolerances specified are in accordance with ASME Y14.5M.
3. Interchangeability dimensions shall be in accordance with MIL-DTL-26482.
4. Lockwashers may be captivated.

FIGURE 4. Plug, rear accessories configurations, class J.

MS3111E



Shell Size	L max overall length	X dia min ID	Y dia max OD	PP min
8	1.453 (36.91)	.317 (8.05)	.608 (15.44)	.250 (6.35)
10		.434 (11.02)	.734 (18.64)	
12		.548 (13.92)	.858 (21.79)	
14		.673 (17.09)	.984 (24.99)	
16		.798 (20.27)	1.110 (28.19)	
18		.899 (22.83)	1.234 (31.34)	
20	1.672 (42.47)	1.024 (26.01)	1.360 (34.54)	
22		1.149 (29.18)	1.686 (42.82)	
24	1.734 (44.04)	1.274 (32.36)	1.610 (40.89)	

NOTES:

1. Dimensions are in inches. Metric equivalents are given for information only.
2. True position (TP) tolerances specified are in accordance with ASME Y14.5M.
3. Intermateability dimensions shall be in accordance with MIL-DTL-26482.

FIGURE 5. Plug, rear accessories configurations, class P.

MS3111E

REQUIREMENTS:

Dimensions and configurations: See figures 1 through 5.

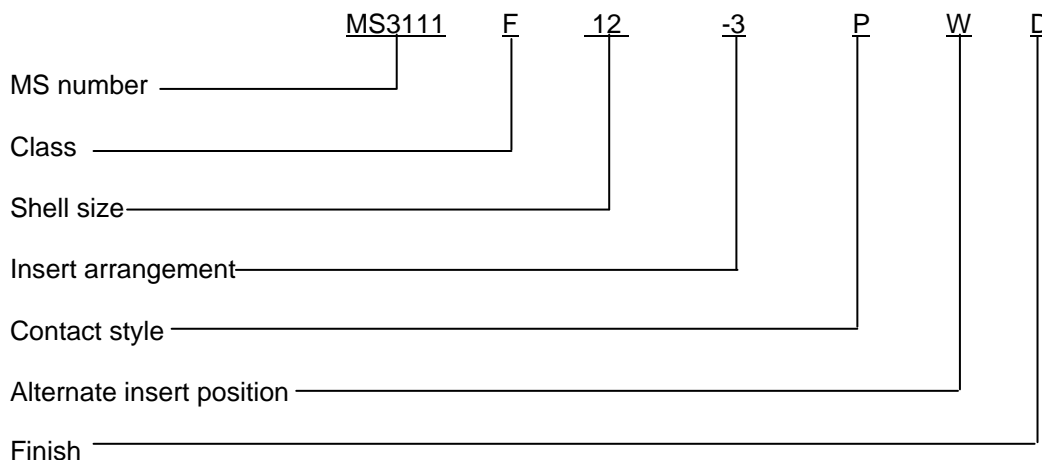
Connector mating: This connector mates with MS3110, MS3112 through MS3115, MS3119, MS3120, MS3122, MS3124, MS3127 and MS3128.

Intermateability dimensions are in accordance with MIL-DTL-26482.

For insert arrangement: See MIL-STD-1669.

Finishes: When finish W is required, the finish designator shall not be included in the PIN. See MIL-DTL-26482 for other finishes, including D, T and Z, available for classes E, F and P.

Part or Identifying Number (PIN) example:



Note: When finish W is required, no finish designator is used (finish W is the default finish).

Changes from previous issue. Marginal notations are not used in this revision to identify changes with respect to the previous issue due to the extent of the changes.

Referenced documents. In addition to MIL-DTL-26482, this document references the following:

MS3110
 MS3112
 MS3113
 MS3114
 MS3115
 MS3119
 MS3120
 MS3122
 MS3124
 MS3127
 MS3128
 MS3420
 MS3476
 MIL-STD-1669
 ASME Y14.5M
 NASM35333
 NASM35338

MS3111E

CONCLUDING MATERIAL

Custodians:

Army - CR
Navy - AS
Air Force - 85
DLA - CC

Preparing activity:

DLA - CC

(Project 5935-2007-178)

Review activities:

Army - AV
Navy - EC, SH
Air Force - 99

NOTE: The activities listed above were interested in this document as of the date of this document. Since organizations and responsibilities can change, you should verify the currency of the information above using the ASSIST Online database at <http://assist.daps.dla.mil>.