

INCH-POUND

MS3110F
 29 April 2009
 SUPERSEDING
 MS3110E
 1 March 2007

DETAIL SPECIFICATION SHEET

CONNECTORS, RECEPTACLE, ELECTRICAL, SOLDER TYPE, WALL MOUNTING,
 BAYONET COUPLING, SERIES 1, CLASSES E, F, J AND P

Inactive for new design after 15 December 1998.
 For new design, use MS3470.

This specification is approved for use by all Departments and
 Agencies of the Department of Defense.

The requirements for acquiring the product described herein
 shall consist of this specification sheet and MIL-DTL-26482.

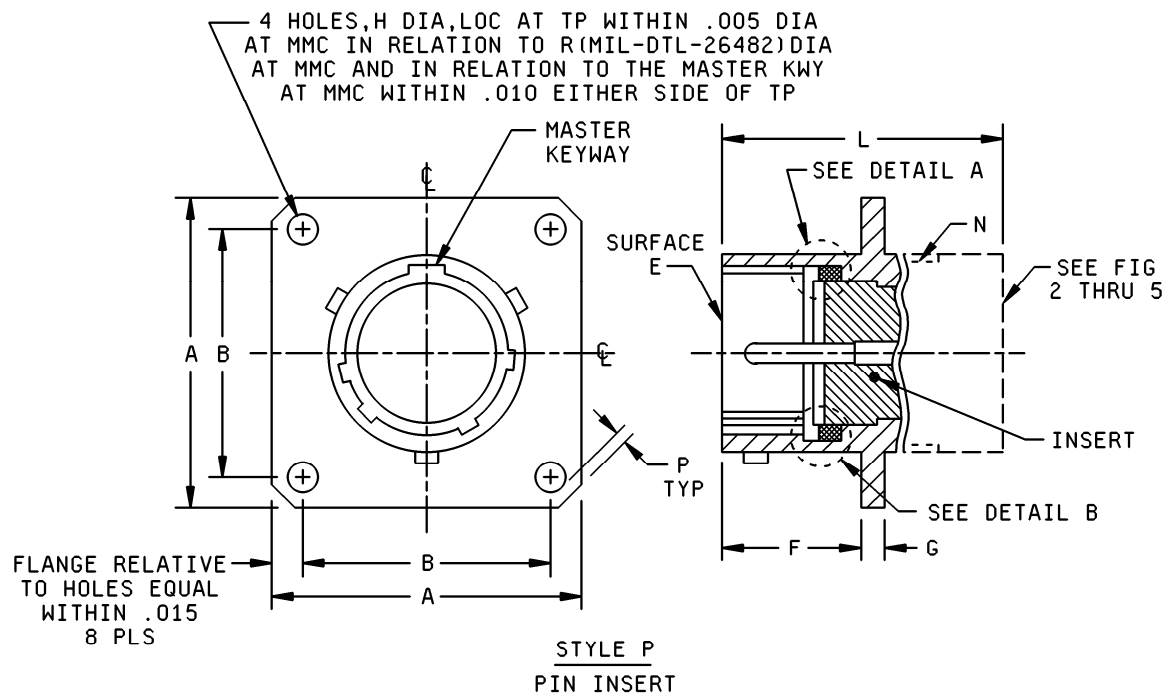


FIGURE 1. Receptacle, classes E, F, J, and P.

MS3110F

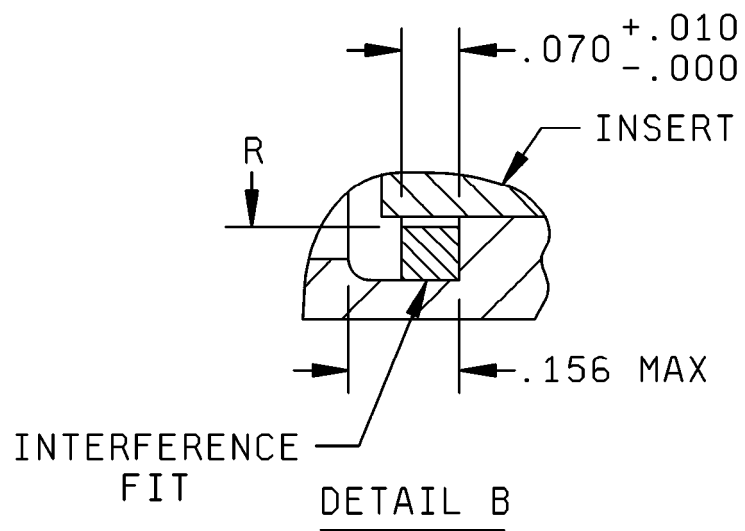
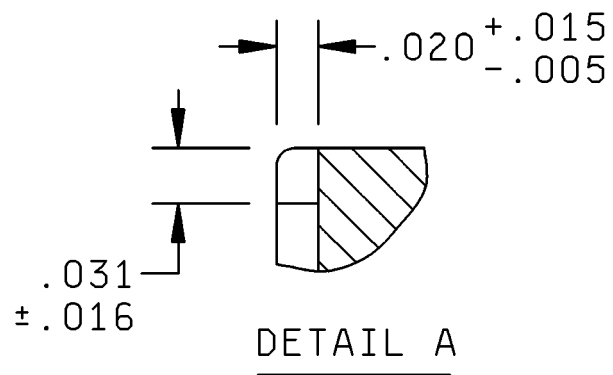


FIGURE 1. Receptacle, classes E, F, J and P - Continued.

MS3110F

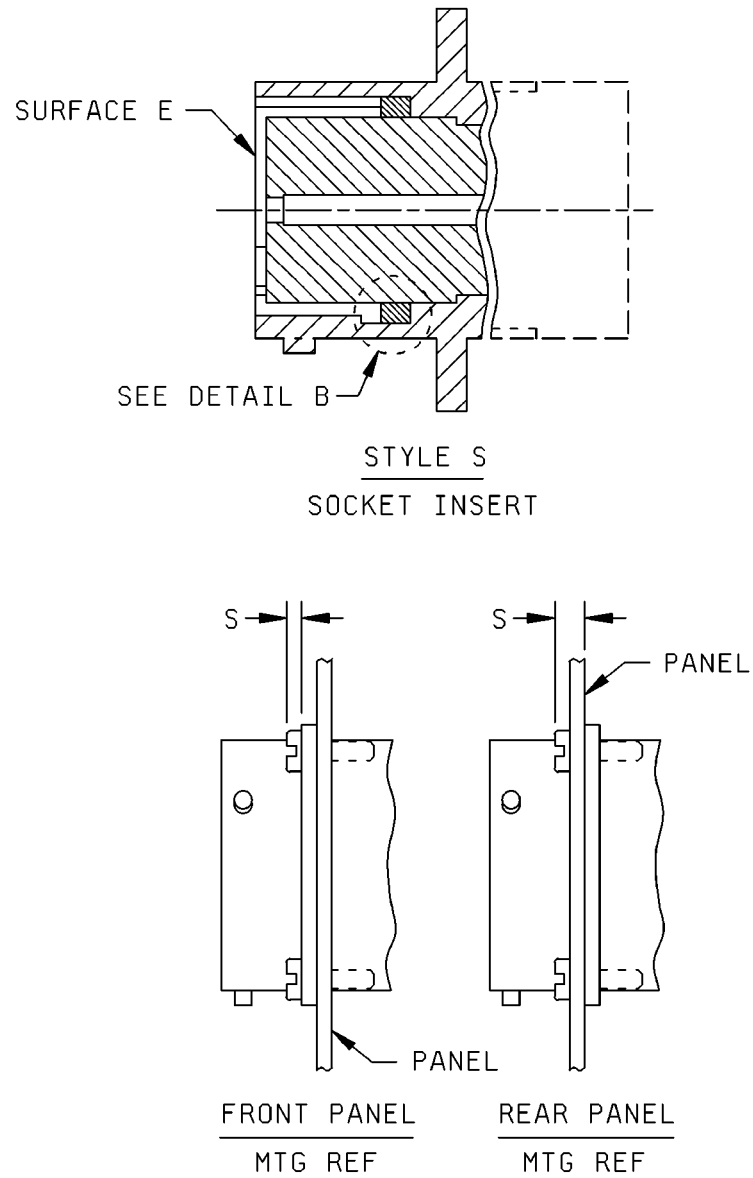


FIGURE 1. Receptacle, classes E, F, J and P - Continued.

MS3110F

Shell size	A max length	B (TP) mounting holes	F + .031, - .000 mounting flange location	G $\pm .016$ thick mounting flange	H $\pm .005$ dia mounting holes
8	.828 (21.03)	.594 (15.08)	.431 (10.95)	.062 (1.57)	.120 (3.05)
10	.954 (24.23)	.719 (18.26)			
12	1.047 (26.60)	.812 (20.62)			
14	1.141 (28.98)	.906 (23.01)			
16	1.234 (31.34)	.969 (24.61)			
18	1.328 (33.73)	1.062 (26.97)			
20	1.453 (36.90)	1.158 (29.41)	.556 (14.12)	.094 (2.38)	.147 (3.73)
22	1.578 (40.08)	1.250 (31.75)			
24	1.700 (43.18)	1.375 (34.92)	.589 (14.96)		

FIGURE 1. Receptacle, classes E, F, J, and P - Continued.

MS3110F

Shell size	N UNEF-2A accessory thread	P min edge distance	R max ID gasket	S max
8	.4375-28	.035 (0.89)	.329 (8.35)	.087 (2.21)
10	.5625-24		.457 (11.60)	
12	.6875-24		.564 (14.32)	
14	.8125-20		.689 (17.50)	
16	.9375-20		.814 (20.67)	
18	1.0625-18		.907 (23.04)	
20	1.1875-18	.147 (3.73)	1.039 (26.39)	.212 (5.38)
22	1.3125-18		1.164 (29.56)	
24	1.4375-18		1.289 (32.74)	

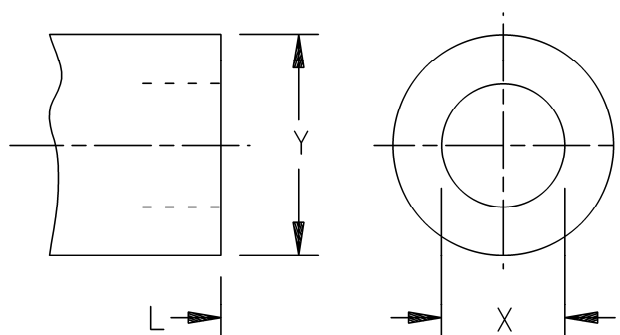
Inches	mm	Inches	mm
.005	0.13	.020	0.51
.010	0.25	.031	0.79
.015	0.38	.070	1.78
.016	0.41	.156	3.96

NOTES:

1. Dimensions are in inches.
2. Metric equivalents are given for information only.
3. True position (TP) tolerances specified are in accordance with ASME Y14.5M.

FIGURE 1. Receptacle, classes E, F, J and P - Continued.

MS3110F



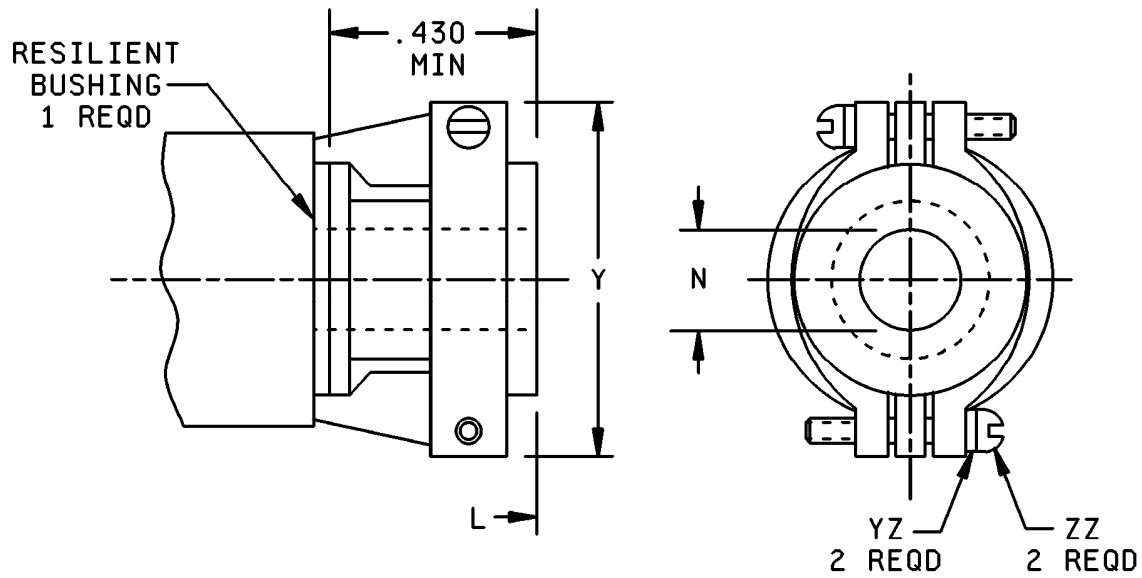
Shell size	L max overall length	X dia min ID	Y dia max OD
8	1.328 (33.73)	.259 (6.58)	.608 (15.44)
10		.359 (9.12)	.734 (18.64)
12		.469 (11.91)	.858 (21.79)
14		.589 (14.96)	.984 (24.99)
16		.727 (18.47)	1.110 (28.19)
18		.779 (19.79)	1.234 (31.34)
20	1.531 (38.89)	.901 (22.89)	1.360 (34.54)
22		1.009 (25.63)	1.484 (37.69)
24	1.594 (40.49)	1.123 (28.52)	1.610 (40.89)

NOTES:

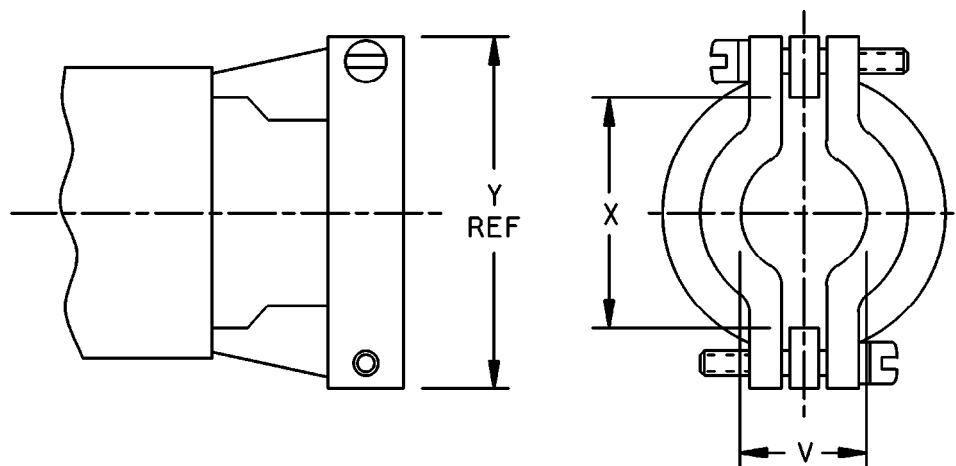
1. Dimensions are in inches.
2. Metric equivalents are given for information only.
3. True position (TP) tolerances specified are in accordance with ASME Y14.5M.

FIGURE 2. Receptacle, rear accessories configurations, class E.

MS3110F



CLASS F, WITH BUSHING



CLASS F, WITH BUSHING REMOVED

FIGURE 3. Receptacle, rear accessories configurations, class F.

MS3110F

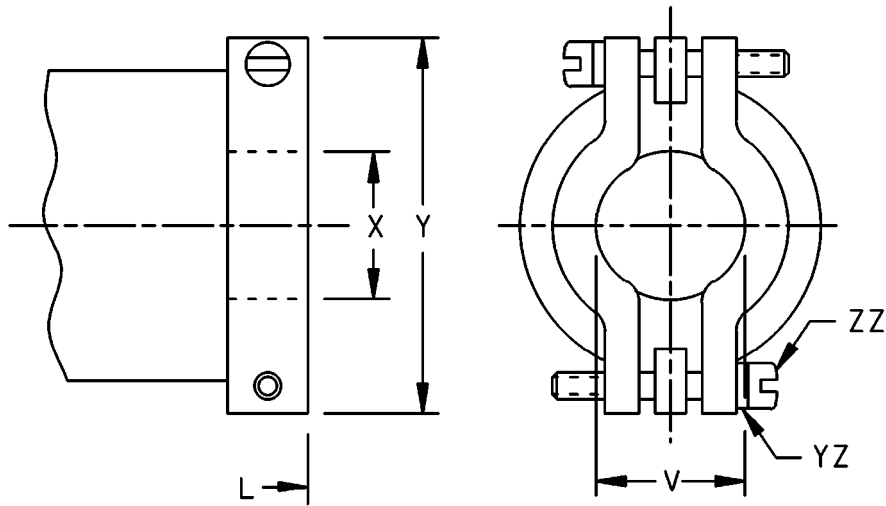
Shell size	L max overall length	Y max	X dia min open	V max closed	N (see note 4) ± .010 free dia	ZZ screw threads	YZ (see note 5) Lockwashers NASM35338 or NASM35333 types
8	1.922 (48.82)	.828 (21.03)	.234 (5.94)	.157 (3.99)	.125 (3.18)	6-32 UNC	NASM35338 - 98 or -41
10		.891 (22.63)	.297 (7.54)	.187 (4.75)	.188 (4.78)		NASM35333 -105 or -37
12		1.016 (25.81)	.422 (10.72)	.281 (7.14)	.312 (7.92)		
14		1.161 (29.49)	.547 (13.89)	.325 (8.26)	.375 (9.53)		
16	2.047 (51.99)	1.203 (30.56)	.609 (15.47)	.356 (9.04)	.500 (12.70)		
18	2.078 (52.78)	1.469 (37.31)	.734 (18.64)	.456 (11.58)	.625 (15.88)	8-32 UNC	NASM35338 -B8L or -8L -99 or -42
20	2.344 (59.54)			.519 (13.18)	.625 (15.88)		NASM35333 -106 or -38
22		1.656 (42.06)	.922 (23.42)	.519 (13.18)	.750 (19.05)		
24	2.406 (61.11)	1.750 (44.45)	.984 (24.99)	.657 (16.69)	.800 (20.32)		

NOTES:

1. Dimensions are in inches.
2. Metric equivalents are in given for information only.
3. True position (TP) tolerances specified are in accordance with ASME Y14.5M.
4. Use MS3420 bushing if reduced opening is required.
5. For class F: Lockwashers may be captivated.

FIGURE 3. Receptacle, rear accessories configurations, class F - Continued.

MS3110F



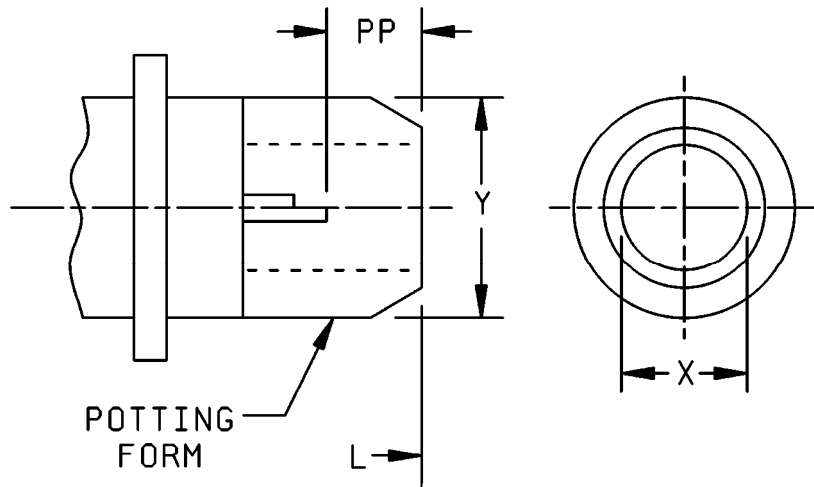
Shell size	L max overall length	V max closed	X ID gland seal min range		Y dia max	ZZ screw threads	YZ (see note 4) Lockwashers NASM35338 or NASM35333 types
			closed	open			
8	2.271 (57.68)	.157 (3.99)	.169 (4.29)	.230 (5.84)	.828 (21.03)	6-32 UNC	NASM35338 - 98 or -41 NASM35333 -105 or -37
10		.187 (4.75)	.205 (5.21)	.312 (7.92)	.891 (22.63)		
12	2.411 (61.24)	.281 (7.14)	.338 (8.59)	.442 (11.23)	1.016 (25.81)		
14	2.599 (66.01)	.325 (8.26)	.416 (10.57)	.539 (13.69)	1.161 (29.49)		
16	2.943 (74.75)	.356 (9.04)	.550 (13.97)	.616 (15.65)	1.203 (30.56)		
18	3.172 (80.57)	.456 (11.58)	.600 (15.24)	.672 (17.07)	1.469 (37.31)	8-32 UNC	NASM35338 -B8L or -8L -99 or -42 NASM35333 -106 or -38
20	3.610 (91.69)	.519 (13.18)	.635 (16.13)	.747 (18.97)			
22	3.766 (95.66)		.670 (17.02)	.846 (21.49)	1.656 (42.06)		
24	3.985 (101.22)	.657 (16.69)	.760 (19.30)	.854 (21.69)	1.750 (44.45)		

NOTES:

1. Dimensions are in inches.
2. Metric equivalents are given for information only.
3. True position (TP) tolerances specified are in accordance with ASME Y14.5M.
4. Lockwashers may be captivated.

FIGURE 4. Receptacle, rear accessories configurations, class J.

MS3110F



Shell size	L max overall length	X dia min	Y dia max	PP min
8	1.453 (36.91)	.317 (8.05)	.608 (15.44)	.250 (6.35)
10		.434 (11.02)	.734 (18.64)	
12		.548 (13.92)	.858 (21.79)	
14		.673 (17.09)	.984 (24.99)	
16		.798 (20.27)	1.110 (28.19)	
18		.899 (22.83)	1.234 (31.34)	
20	1.672 (42.47)	1.024 (26.01)	1.360 (34.54)	
22		1.149 (29.18)	1.484 (37.69)	
24	1.734 (44.04)	1.274 (32.36)	1.610 (40.89)	

NOTES:

1. Dimensions are in inches.
2. Metric equivalents are given for information only.
3. True position (TP) tolerances specified are in accordance with ASME Y14.5M.

FIGURE 5. Receptacle, rear accessories configurations, class P.

MS3110F

REQUIREMENTS:

Dimensions and configurations: See figures 1 through 5.

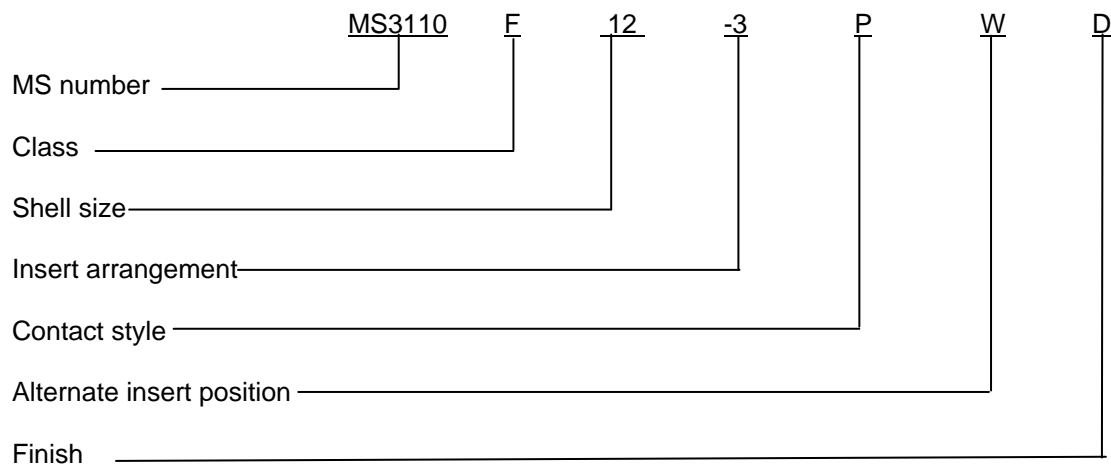
Connector mating: This connector mates with MS3111, MS3116, MS3121 and MS3126.

For insert arrangement: See MIL-STD-1669.

Intermateability dimensions are in accordance with MIL-DTL-26482.

Finishes: A finish designator shall not be included in the PIN when finish W is required. See MIL-DTL-26482 for other finishes, including D, T and Z, available for classes E, F, P and J.

Part or Identifying Number (PIN) example:



Note: When finish W is required, no finish designator is used (class W is the default finish).

Changes from previous issue. Marginal notations are not used in this revision to identify changes with respect to the previous issue due to the extent of the changes.

Referenced documents. In addition to MIL-DTL-26482, this document references the following:

MS3111
 MS3116
 MS3121
 MS3126
 MS3420
 MS3470
 MIL-STD-1669
 ASME Y14.5M
 NASM35333
 NASM35338

MS3110F

CONCLUDING MATERIAL

Custodians:

Army - CR
Navy - AS
Air Force - 85
DLA - CC

Preparing activity:

DLA - CC

Review activities:

Army - AV
Navy - EC, SH
Air Force - 99

(Project 5935-2007-177)

NOTE: The activities listed above were interested in this document as of the date of this document. Since organizations and responsibilities can change, you should verify the currency of the information above using the ASSIST Online database at <http://assist.daps.dla.mil>.