

INCH-POUND

MS3110E
 1 March 2007
 SUPERSEDING
 MS3110D
 19 August 1976

DETAIL SPECIFICATION SHEET

CONNECTORS, RECEPTACLE, ELECTRICAL, SOLDER TYPE,
 WALL MOUNTING, BAYONET COUPLING, SERIES 1

Inactive for new design after 15 December 1998.
 For new design, use MS3470.

This specification is approved for use by all Departments and
 Agencies of the Department of Defense.

The requirements for acquiring the product described herein
 shall consist of this specification sheet and MIL-DTL-26482.

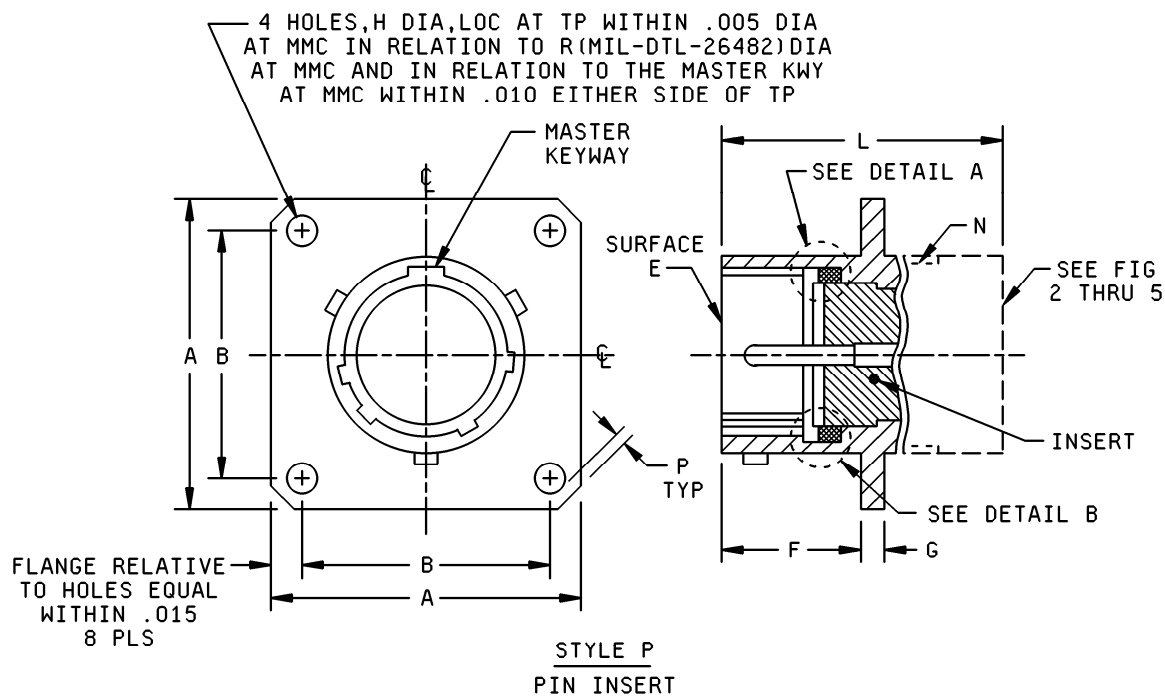


FIGURE 1. Receptacle, classes E, F, J and P.

MS3110E

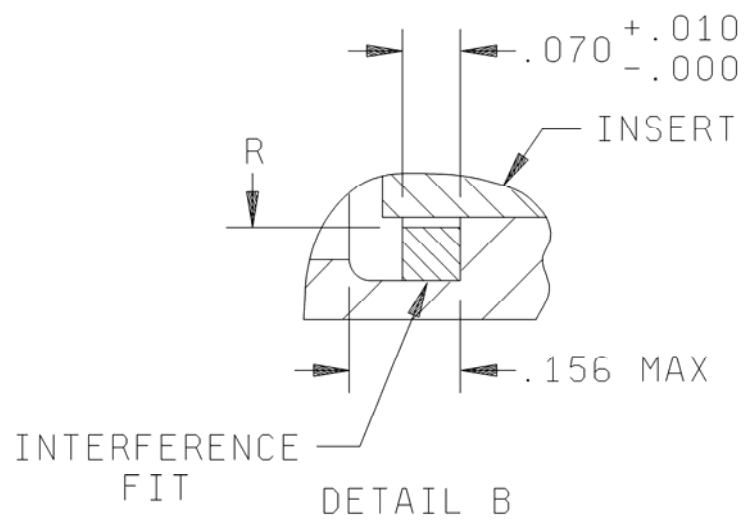
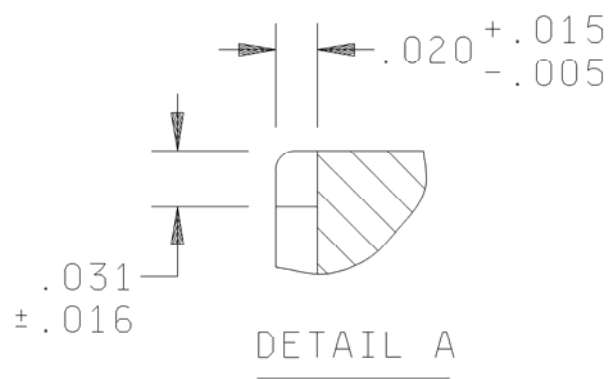


FIGURE 1. Receptacle, classes E, F, J and P - Continued.

MS3110E

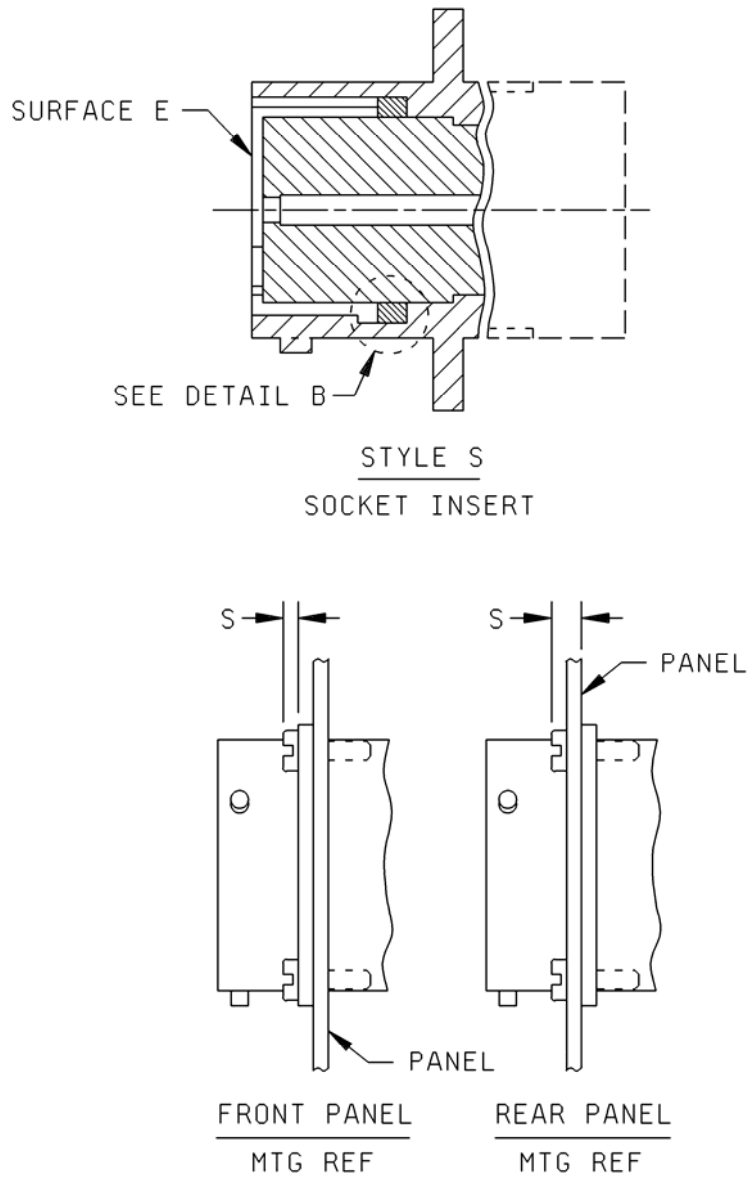


FIGURE 1. Receptacle, classes E, F, J and P - Continued.

MS3110E

Shell size	A max length	B (TP) mounting holes	F + .031, - .000 mounting flange location	G ± .016 thick mounting flange	H ± .005 dia mounting holes
8	.828 (21.03)	.594 (15.08)	.431 (10.95)	.062 (1.57)	.120 (3.05)
10	.954 (24.23)	.719 (18.26)			
12	1.047 (26.60)	.812 (20.62)			
14	1.141 (28.98)	.906 (23.01)			
16	1.234 (31.34)	.969 (24.61)			
18	1.328 (33.73)	1.062 (26.97)			
20	1.453 (36.90)	1.158 (29.41)	.556 (14.12)	.094 (2.38)	.147 (3.73)
22	1.578 (40.08)	1.250 (31.75)			
24	1.700 (43.18)	1.375 (34.92)	.589 (14.96)		

FIGURE 1. Receptacle, classes E, F, J and P - Continued.

MS3110E

Shell size	N UNEF-2A accessory thread	P min edge distance	R max ID gasket	S max
8	.4375-28	.035 (0.89)	.329 (8.35)	.087 (2.21)
10	.5625-24		.457 (11.60)	
12	.6875-24		.564 (14.32)	
14	.8125-20		.689 (17.50)	
16	.9375-20		.814 (20.67)	
18	1.0625-18		.907 (23.04)	
20	1.1875-18	.147 (3.73)	1.039 (26.39)	.212 (5.38)
22	1.3125-18		1.164 (29.56)	
24	1.4375-18		1.289 (32.74)	

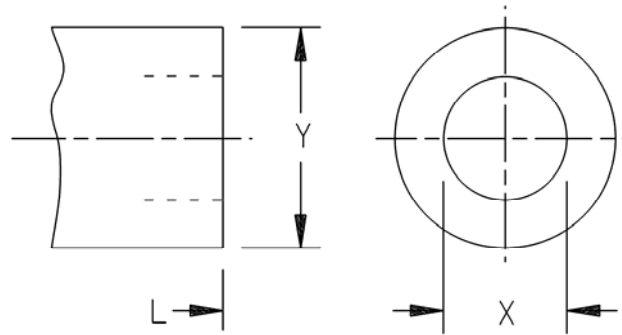
Inches	mm	Inches	mm
.005	0.13	.020	0.51
.010	0.25	.031	0.79
.015	0.38	.070	1.78
.016	0.41	.156	3.96

NOTES:

1. Dimensions are in inches.
2. Metric equivalents are given for information only.
3. True position (TP) tolerances specified are in accordance with ASME Y14.5M.

FIGURE 1. Receptacle, classes E, F, J and P - Continued.

MS3110E



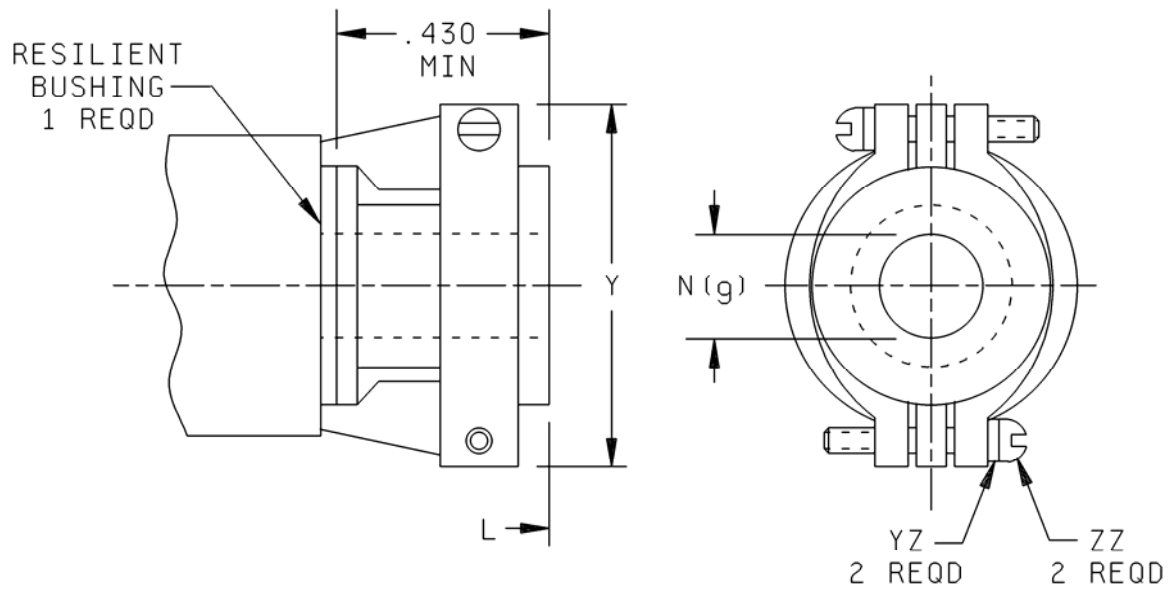
Shell size	L max overall length	X dia min ID	Y dia max OD
8	1.328 (33.73)	.259 (6.58)	.608 (15.44)
10		.359 (9.12)	.734 (18.64)
12		.469 (11.91)	.858 (21.79)
14		.589 (14.96)	.984 (24.99)
16		.727 (18.47)	1.110 (28.19)
18		.779 (19.79)	1.234 (31.34)
20	1.531 (38.89)	.901 (22.89)	1.360 (34.54)
22		1.009 (25.63)	1.484 (37.69)
24	1.594 (40.49)	1.123 (28.52)	1.610 (40.89)

NOTES:

1. Dimensions are in inches.
2. Metric equivalents are given for information only.
3. True position (TP) tolerances specified are in accordance with ASME Y14.5M.

FIGURE 2. Receptacle, rear accessories configurations, class E.

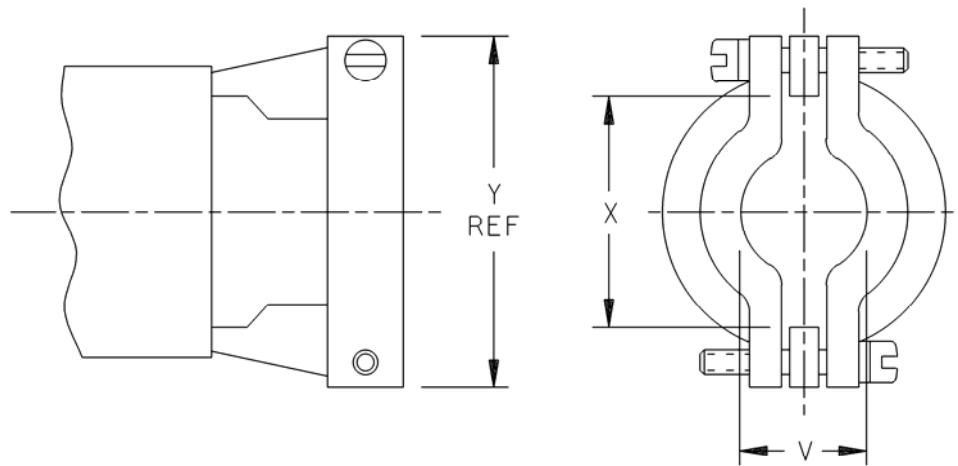
MS3110E



Shell size	L max overall length	Y max	N (g) ± .010 free dia	ZZ screw threads	YZ Lockwashers NASM 35338 or AN936 types
8	1.922 (48.82)	.828 (21.03)	.125 (3.18)	6-32 UNC	NASM 35338 B6L OR -6L AN936 A6B OR -A6
10		.891 (22.63)	.188 (4.78)		
12		1.016 (25.81)	.312 (7.92)		
14		1.161 (29.49)	.375 (9.53)		
16	2.047 (51.99)	1.203 (30.56)	.500 (12.70)	8-32 UNC	NASM 35338 B8L OR -8L AN936 A8B OR -A8
18	2.078 (52.78)	1.469 (37.31)	.625 (15.88)		
20	2.344 (59.54)		.625 (15.88)		
22		1.656 (42.06)	.750 (19.05)		
24	2.406 (61.11)	1.750 (44.45)	.800 (20.32)		

FIGURE 3. Receptacle, rear accessories configurations, class F.

MS3110E



Dimensions with bushing removed

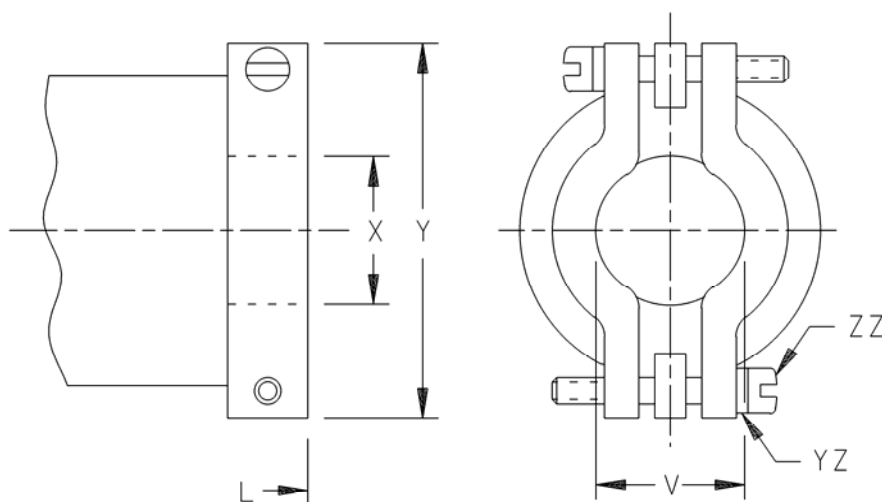
Shell size	X dia min open	Y max	V max closed
8	.234 (5.94)	.828 (21.03)	.157 (3.99)
10	.297 (7.54)	.891 (22.63)	.187 (4.75)
12	.422 (10.72)	1.016 (25.81)	.281 (7.14)
14	.547 (13.89)	1.161 (29.49)	.325 (8.26)
16	.609 (15.47)	1.203 (30.56)	.356 (9.04)
18	.734 (18.64)	1.469 (37.31)	.456 (11.58)
20			.519 (13.18)
22			
24	.984 (24.99)	1.750 (44.45)	.657 (16.69)

NOTES:

1. Dimensions are in inches.
2. Metric equivalents are in given for information only.
3. True position (TP) tolerances specified are in accordance with ASME Y14.5M.

FIGURE 3. Receptacle, rear accessories configurations, class F - Continued.

MS3110E



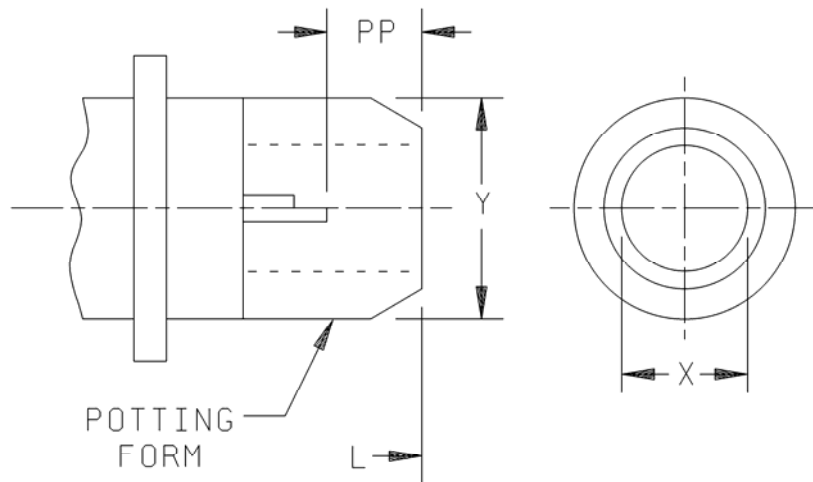
Shell size	L max overall length	V max closed	X ID gland seal min range		Y dia max	ZZ screw threads	YZ Lockwashers NASM 35338 or AN936 types
			min	max			
8	2.271 (57.68)	.157 (3.99)	.169 (4.29)	.230 (5.84)	.828 (21.03)	6-32 UNC	NASM 35338 B6L OR -6L AN936 A6B OR -A6
10		.187 (4.75)	.205 (5.21)	.312 (7.92)	.891 (22.63)		
12	2.411 (61.24)	.281 (7.14)	.338 (8.59)	.442 (11.23)	1.016 (25.81)		
14	2.599 (66.01)	.325 (8.26)	.416 (10.57)	.539 (13.69)	1.161 (29.49)		
16	2.943 (74.75)	.356 (9.04)	.550 (13.97)	.616 (15.65)	1.203 (30.56)		
18	3.172 (80.57)	.456 (11.58)	.600 (15.24)	.672 (17.07)	1.469 (37.31)	8-32 UNC	NASM 35338 B8L OR -8L AN936 A8B OR -A8
20	3.610 (91.69)	.519 (13.18)	.635 (16.13)	.747 (18.97)			
22	3.766 (95.66)		.670 (17.02)	.846 (21.49)	1.656 (42.06)		
24	3.985 (101.22)	.657 (16.69)	.760 (19.30)	.854 (21.69)	1.750 (44.45)		

NOTES:

1. Dimensions are in inches.
2. Metric equivalents are given for information only.
3. True position (TP) tolerances specified are in accordance with ASME Y14.5M.

FIGURE 4. Receptacle, rear accessories configurations, class J.

MS3110E



Shell size	L max overall length	X dia min	Y dia max	PP min
8	1.453 (36.91)	.317 (8.05)	.608 (15.44)	.250 (6.35)
10		.434 (11.02)	.734 (18.64)	
12		.548 (13.92)	.858 (21.79)	
14		.673 (17.09)	.984 (24.99)	
16		.798 (20.27)	1.110 (28.19)	
18		.899 (22.83)	1.234 (31.34)	
20	1.672 (42.47)	1.024 (26.01)	1.360 (34.54)	
22		1.149 (29.18)	1.484 (37.69)	
24	1.734 (44.04)	1.274 (32.36)	1.610 (40.89)	

NOTES:

1. Dimensions are in inches.
2. Metric equivalents are given for information only.
3. True position (TP) tolerances specified are in accordance with ASME Y14.5M.

FIGURE 5. Receptacle, rear accessories configurations, class P.

MS3110E

REQUIREMENTS:

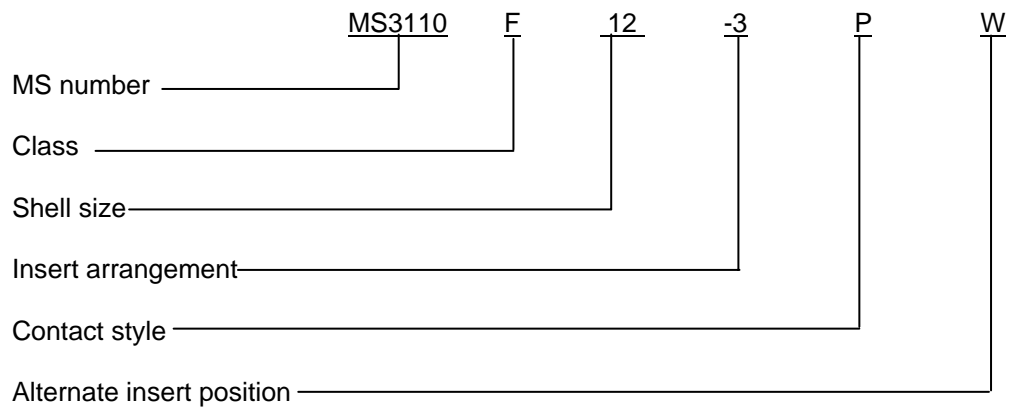
Dimensions and configurations: See figures 1 through 5.

Connector mating: This connector mates with MS3111, MS3116, MS3121 and MS3126.

For insert arrangement: See MIL-STD-1669.

Intermateability dimensions are in accordance with MIL-DTL-26482.

Part or Identifying Number (PIN) example:



Changes from previous issue. Marginal notations are not used in this revision to identify changes with respect to the previous issue due to the extent of the changes.

Referenced documents. In addition to MIL-DTL-26482, this document references the following:

MS3111
 MS3116
 MS3121
 MS3126
 MS3470
 MIL-STD-1669
 AN936
 ASME Y14.5M
 NASM 35338

MS3110E

CONCLUDING MATERIAL

Custodians:

Army - CR
Navy - AS
Air Force - 11
DLA - CC

Preparing activity:

DLA - CC

Review activities:

Army - AV
Navy - EC, SH

(Project 5935-4656-001)

NOTE: The activities listed above were interested in this document as of the date of this document. Since organizations and responsibilities can change, you should verify the currency of the information above using the ASSIST Online database at <http://assist.daps.dla.mil>.