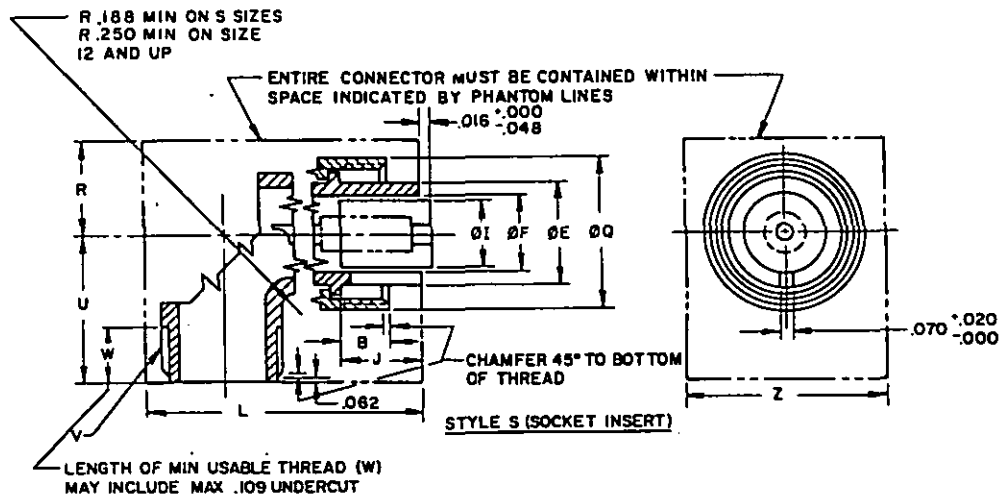
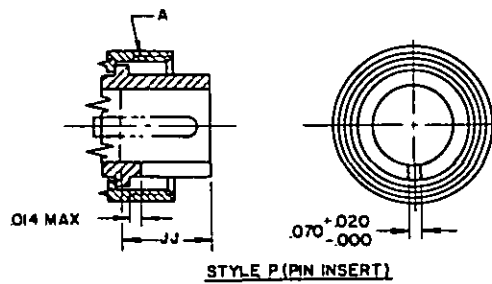


THE REQUIREMENTS FOR ACQUIRING THE PRODUCT(S) DESCRIBED HEREIN SHALL CONSIST OF THIS SPECIFICATION SHEET AND THE ISSUE OF THE FOLLOWING SPECIFICATION LISTED IN THAT ISSUE OF THE DODISS SPECIFIED IN THE SOLICITATION: MIL-C-5015



CLASS A-SOLID SHELL

CLASS B-SPLIT SHELL

SIZE	A COUPLING THREAD	B +.000 -.062 EXTENSION COUPLING RING	Ø E +.000 -.015	Ø F MIN	Ø I MAX INSERT	J LENGTH ENGAGE- MENT +.005	(a) JJ +.031 -.000 INSERT LOCATION	L MAX	Ø Q MAX COUPLING RING	U MAX	V THREAD	W MIN USABLE THREAD	R MAX	Z MAX CLASS B ONLY	FOR INSERT ARRANGEMENT SEE
8S	1/2-28	.375	.365	.252	.250	.531	.562		.844	.938	1/2-28	.375	.422	.844	MIL-STD-1651
10S	5/8-24		.440	.323	.320			1.750	.969	1.000	5/8-24		.485	.969	
10SL	3/4-20		.446	—	.440			1.812	1.062	1.062			.531	1.062	
12S		.625	.555	.450	.448	2.000	3/4-20	.375		.656	1.156				
12			.531	.562	2.250	1.156			1.125	.750	1.312				
14S	7/8-20		.675	.526	.525	.719			.750	2.312	1.250		1.188	7/8-20	
14	1 -20	.625	.805	.651	.650	.531	.562	2.375	1.250	1.188	7/8-20	.906	1.625		
16S		.625	.930	.776	.770	.719	.750	2.562	1.344	1.312	1 -20	.969	2.000		
18	1-1/8-18	1.050	.932	.925	3.031			1.469	1.375	1-3/16-18	1.031	2.000			
20	1-1/4-18	1.175	1.026	1.020	3.406			1.594	1.562	1-7/16-18			1.156		
22	1-3/8-18	1.300	1.151	1.145				1.719				1.969	1.875	1-3/4-18	
24	1-1/2-18	1.520	1.370	1.365	3.750			1.969	2.219	1.875	1-3/4-18	.438	1.312	2.500	
28	1-3/4-18	1.770	1.620	1.615									2.469		
32	2 -18	1.980	1.838	1.830	3.938			2.469	2.062	2 -18	.500	1.562	3.031		
36	2-1/4-16	2.230	2.057	2.045	4.750			2.719	2.125	2-1/4-16		1.562	3.031		
40	2-1/2-16														

PREPARING ACTIVITY: NAVY-A5

CUSTODIANS: ARMY-CR NAVY-A5

AIR FORCE-85

REVIEW: ARMY-MI, AV, ME, NAVY-SH, EC, AF-99

USER: ARMY-AT, NAVY-OS, MC, CG

PROJECT NUMBER: 5935-3892

MILITARY SPECIFICATION SHEET

TITLE CONNECTORS, PLUG, ELECTRIC,
SOLDER CONTACT, 90 DEGREE,
AN TYPE

SPECIFICATION SHEET NUMBER

MS3108

20 AUG 92

REV D

SUPERSEDING
MS3108 C

31 AUG 90

AMSC- N/A

FSC 5935

DISTRIBUTION STATEMENT A. Approved for public release; distribution is unlimited.

Page 1 of 8

THIS SPECIFICATION IS APPROVED FOR USE
BY ALL DEPARTMENTS AND AGENCIES OF THE
DEPARTMENT OF DEFENSE.

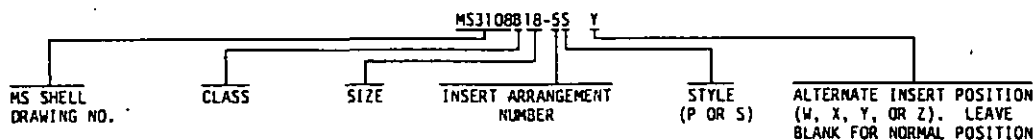
THE REQUIREMENTS FOR ACQUIRING THE PRODUCT(S) DESCRIBED HEREIN SHALL CONSIST OF THIS SPECIFICATION SHEET AND THE ISSUE OF THE FOLLOWING SPECIFICATION LISTED IN THAT ISSUE OF THE DODISS SPECIFIED IN THE SOLICITATION: MIL-C-5015

Form approved
OMB No. 0704-0188

NOTES:

- (D) (a) CLASS A PLUGS ARE CANCELLED AFTER 1 JAN 1991. FOR REPLACEMENT PURPOSES USE MS3108B. MANUFACTURERS MAY CONTINUE TO SUPPLY MS3108A CONNECTORS UNTIL 1 JAN 1992 OR EXHAUST THEIR INVENTORIES, WHICHEVER COMES FIRST. FOR SHIPBOARD JACKETED CABLE USE MS3408.
(b) CLASS B PLUGS ARE INACTIVE FOR NEW DESIGN AFTER 1 JAN 1991.
(c) WHERE RESILIENT INSERTS ARE USED, JJ MAY BE .109 LESS THAN THAT INDICATED.
(d) SOCKET INSERT OF HARD MATERIAL SHALL EXTEND .016 MAXIMUM BEYOND OR .032 MAXIMUM BELOW SHELL. SOCKET INSERT OF RESILIENT MATERIAL SHALL EXTEND .047 + .000-.047 BEYOND SHELL AS SHOWN.
(e) MS3108B CONNECTORS REPLACE AND ARE INTERCHANGEABLE WITH CORRESPONDING MS3108A, AN3108A OR AN3108B CONNECTORS.

EXAMPLE OF PART NUMBER:



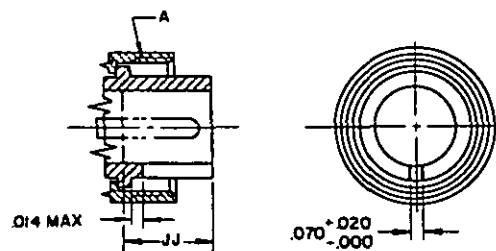
DIMENSIONS IN INCHES. UNLESS OTHERWISE SPECIFIED, TOLERANCES: DECIMALS $\pm .016$. THIS SPECIFICATION SHEET TAKES PRECEDENCE OVER DOCUMENTS REFERENCED HEREIN. REFERENCED DOCUMENTS SHALL BE OF THE ISSUE IN EFFECT ON DATE OF INVITATIONS FOR BID.

CERTAIN PROVISIONS OF THIS SPECIFICATION SHEET ARE THE SUBJECT OF INTERNATIONAL STANDARDIZATION AGREEMENT NEPR 28. WHEN AMENDMENT, REVISION OR CANCELLATION OF THIS SPECIFICATION SHEET IS PROPOSED WHICH WILL MODIFY THE INTERNATIONAL AGREEMENT CONCERNED, THE PREPARING ACTIVITY WILL TAKE APPROPRIATE ACTION THROUGH INTERNATIONAL STANDARDIZATION CHANNELS INCLUDING DEPARTMENTAL STANDARDIZATION OFFICES TO CHANGE THE AGREEMENT OR MAKE OTHER APPROPRIATE ACCOMMODATIONS.

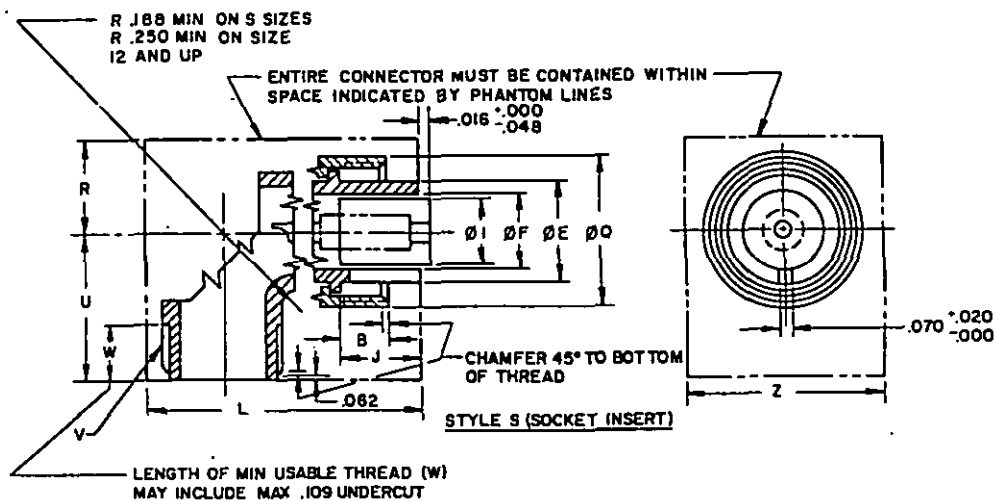
⑥ DENOTES CHANGE

PREPARING ACTIVITY: NAVY-AS CUSTODIANS: ARMY-CR NAVY-AS AIR FORCE-85 REVIEW: ARMY-MI, AV, ME, NAVY-SH, EC, AF-99 USER: ARMY-AT, NAVY-OS, MC, CG PROJECT NUMBER: 5935-3892	MILITARY SPECIFICATION SHEET TITLE CONNECTORS, PLUG, ELECTRIC, SOLDER CONTACT, 90 DEGREE, AN TYPE	SPECIFICATION SHEET NUMBER MS3108 20 AUG 92 REV D SUPERSEDING MS3108 C 31 AUG 90 AMSC- N/A FSC 5935
DISTRIBUTION STATEMENT A. Approved for public release; distribution is unlimited.		Page <u>2</u> of <u>8</u>

THIS SPECIFICATION IS APPROVED FOR USE BY ALL DEPARTMENTS AND AGENCIES OF THE DEPARTMENT OF DEFENSE.

Form approved
OMB No. 0704-0188

STYLE P (PIN INSERT)



CLASS K-FIREWALL

SIZE	A COUPLING THREAD	B +.000 -.062 EXTENSION COUPLING RING	DE +.000 -.015	DF MIN	DI MAX INSERT	J LENGTH ENGAGE- MENT	JJ +.031 -.000 INSERT LOCATION	L MAX	DO MAX COUPLING RING	U MAX	V THREAD	W MIN USABLE THREAD	R MAX	Z MAX	FOR INSERT ARRANGEMENT SEE	
8S	1/2-28	.375	.365	.252	.250	.531	.562	1.750	.844	1.000	1/2-28		.422	.844	MIL-STD-1651	
10S	5/8-24		.440	.323	.320			1.938	.969	1.250			.485	.969		
10SL			.446	—	.440			2.188								
12S	3/4-20	.625	.555	.450	.448	.719	.750	2.312	1.062	1.406	5/8-24		.531	1.062		
12								2.531								
14S	7/8-20	.375	.675	.526	.525	.531	.562	2.500	1.172	1.469	3/4-20	.375	.656	1.156		
14		.625				.719	.750	2.719								
16S	1 -20	.375	.805	.651	.650	.531	.562		1.266	1.531	7/8-20		.750	1.312		
16								2.938								
18	1-1/8-18	.625	.930	.776	.770	.719	.750	3.188	1.359	1.625	1 -20		.828	1.344		
20	1-1/4-18		1.050	.932	.925			3.375	1.484	1.688	1-3/16-18		.906	1.625		
22	1-3/8-18		1.175	1.026	1.020			3.406	1.609				.969			
24	1-1/2-18		1.300	1.151	1.145			3.875	1.734	2.031	1-7/16-18		1.031	2.000		
26	1-3/4-18		1.520	1.370	1.365			4.094	1.984	2.312			1.156			
32	2 -18		1.770	1.620	1.615			4.438	2.234	2.438	1-3/4-18	.438	1.312	2.500		
36	2-1/4-16		1.980	1.838	1.830			5.000	2.484	2.656	2 -18	.500	1.438			
40	2-1/2-16		2.230	2.057	2.045			5.000	2.719	2.125	2-1/4-16		1.562	3.031		

PREPARING ACTMITY: NAVY-AS
CUSTODIANS: ARMY-CR NAVY-AS
AIR FORCE-85
REVIEW: ARMY-MI, AV, ME, NAVY-SH, EC, AF-99
USER: ARMY-AT, NAVY-OS, MC, CG
PROJECT NUMBER: 5935-3892

MILITARY SPECIFICATION SHEET
TITLE CONNECTORS, PLUG, ELECTRIC,
SOLDER CONTACT, 90 DEGREE,
AN TYPE

SPECIFICATION SHEET NUMBER 20 AUG 92
MS3108 REV D
SUPERSEDING MS3108 C 31 AUG 90
AMSC- N/A FSC 5935

DISTRIBUTION STATEMENT A Approved for public release; distribution is unlimited.

Page 3 of 8

DD FORM 672 MAY 1988

PREVIOUS EDITIONS OF THIS FORM ARE OBSOLETE.

142894

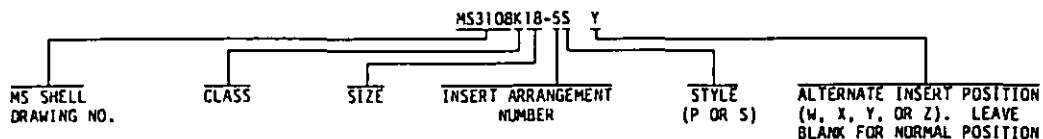
THE REQUIREMENTS FOR ACQUIRING THE PRODUCT(S) DESCRIBED HEREIN SHALL CONSIST OF THIS SPECIFICATION SHEET AND THE ISSUE OF THE FOLLOWING SPECIFICATION LISTED IN THAT ISSUE OF THE DODISS SPECIFIED IN THE SOLICITATION: MIL-C-5015

THIS SPECIFICATION IS APPROVED FOR USE BY ALL DEPARTMENTS AND AGENCIES OF THE DEPARTMENT OF DEFENSE.

Form approved
ONR No. 0704-0188**NOTES:**

- Ⓓ (a) CLASS K PLUGS ARE INACTIVE FOR NEW DESIGN AFTER 1 JAN 1991. FOR SHIPBOARD JACKETED CABLE USE MS3408.
 (b) MS3108K CONNECTORS REPLACE AND ARE INTERCHANGEABLE WITH CORRESPONDING AN3108K CONNECTORS.

EXAMPLE OF PART NUMBER:



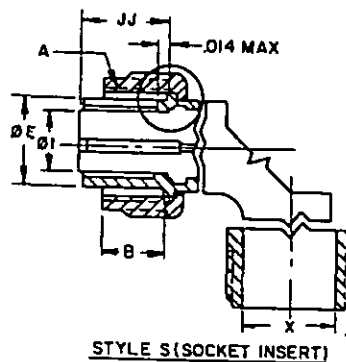
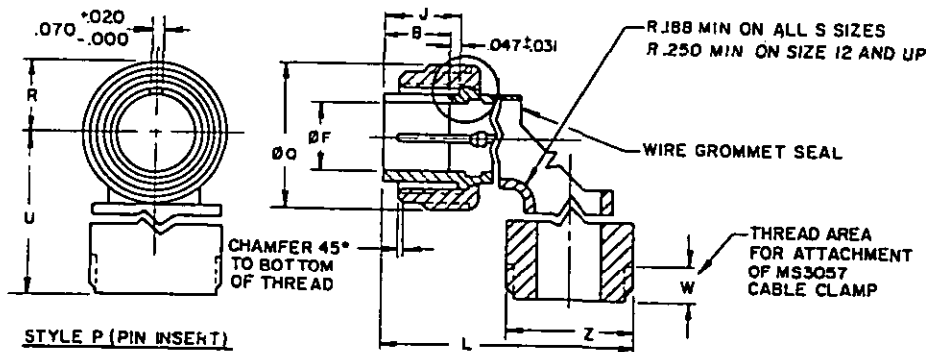
DIMENSIONS IN INCHES. UNLESS OTHERWISE SPECIFIED, TOLERANCES: DECIMALS $\pm .016$.
 THIS SPECIFICATION SHEET TAKES PRECEDENCE OVER DOCUMENTS REFERENCED HEREIN.
 REFERENCED DOCUMENTS SHALL BE OF THE ISSUE IN EFFECT ON DATE OF INVITATIONS FOR BID.

Ⓓ DENOTES CHANGE

PREPARING ACTIVITY: NAVY-AS CUSTODIANS: ARMY-CR NAVY-AS AIR FORCE-BS REVIEW: ARMY-MI, AV, ME, NAVY-SH, EC, AF-99 USER: ARMY-AT, NAVY-OS, MC, CG PROJECT NUMBER: 5935-3892	MILITARY SPECIFICATION SHEET TITLE CONNECTORS, PLUG, ELECTRIC, SOLDER CONTACT, 90 DEGREE, AN TYPE	SPECIFICATION SHEET NUMBER MS3108 20 AUG 92 REV D SUPERSEDING MS3108 C 31 AUG 90 AMSC- N/A FSC 5935
DISTRIBUTION STATEMENT A Approved for public release; distribution is unlimited.		Page 4 of 8

THE REQUIREMENTS FOR ACQUIRING THE PRODUCT(S) DESCRIBED HEREIN SHALL CONSIST OF THIS SPECIFICATION SHEET AND THE ISSUE OF THE FOLLOWING SPECIFICATION LISTED IN THAT ISSUE OF THE DODISS SPECIFIED IN THE SOLICITATION: MIL-C-5015

Form approved
OMB No. 0704-0188



CLASS E- ENVIRONMENT RESISTANT

SIZE	A COUPLING THREAD	B EXTENSION COUPLING RING	E MIN OUTSIDE	F MIN INSIDE	Ø1 MAX INSERT	J LENGTH ENGAGE- MENT	JJ INSERT LOCATION	L OVERALL LENGTH	ØO MAX COUPLING RING	U MAX	Z CABLE CLEARANCE MIN	R MAX	W MIN USABLE THREAD	FOR INSERT ARRANGE- MENT SEE	PACKING MS28900 DASH NO.	ØY MAX +.005 -.010	Z MAX
85	1/2-28		.365	.252	.250			2.156	.844			.422			-8	.355	
105	5/8-24	.375	.440	.323	.320	.531	.531	2.188	.969	1.469	.172	.516			-10	.440	1.046
105L			.446		.440						.281					.446	
125	3/4-20		.555	.450	.448	.719	.719	2.531	1.062	1.500		.562			-12	.555	1.125
12		.625	.675	.526	.525	.531	.531	2.312	1.156	1.594	.406	.625			-14	.675	1.343
145	7/8-20		.675	.526	.525	.719	.719	2.688								.675	
14		.625	.805	.651	.650	.531	.531	2.406	1.250	1.688	.500	.688	.375		-16	.805	1.484
165	1-20		.930	.776	.770			2.781	2.844	1.781	.531	.750			-18	.930	1.609
18	1-1/8-18		1.050	.932	.925			3.250	1.469	1.969	.656	.844			-20	1.050	1.890
20	1-1/4-18		1.175	1.026	1.020			3.250	1.594	2.000	.750	.906			-22	1.175	
22	1-3/8-18	.625	1.300	1.151	1.145	.719	.719	3.719	1.719	2.125	.781	.953			-24	1.300	2.170
24	1-1/2-18		1.520	1.370	1.365			3.719	1.969	2.188	.922	1.094			-28	1.520	
28	1-3/4-18		1.770	1.620	1.615			4.188	2.219	2.594	1.156	1.234	.438		-32	1.770	2.650
32	2-18		1.980	1.838	1.830			4.297	2.469	2.719	1.250	1.359			-36	1.980	2.922
36	2-1/4-16		2.230	2.057	2.047			7.411	2.719	4.730	1.562	1.422	.500		-40	2.230	3.531
40	2-1/2-16																

PREPARING ACTIVITY: NAVY-AS
CUSTODIANS: ARMY-CR NAVY-AS
AIR FORCE-85
REVIEW: ARMY-MI, AV, ME, NAVY-SH, EC, AF-99
USER: ARMY-AT, NAVY-OS, MC, CG
PROJECT NUMBER: 5935-3892

MILITARY SPECIFICATION SHEET
TITLE CONNECTORS, PLUG, ELECTRIC,
SOLDER CONTACT, 90 DEGREE,
AN TYPE

SPECIFICATION SHEET NUMBER
MS3108 20 AUG 92
REV D
SUPERSEDING
MS3108 C 31 AUG 90
AMSC- N/A FSC 5935

DISTRIBUTION STATEMENT A. Approved for public release; distribution is unlimited.

Page 5 of 8

DD FORM 672 MAY 1988

PREVIOUS EDITIONS OF THIS FORM ARE OBSOLETE

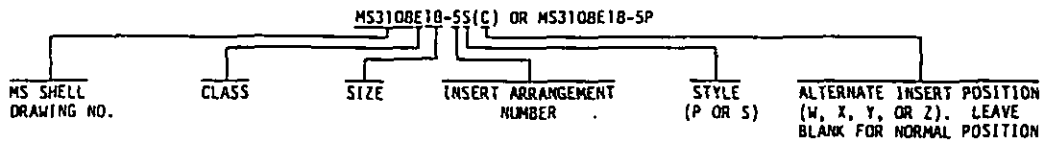
111964

THIS SPECIFICATION IS APPROVED FOR USE
BY ALL DEPARTMENTS AND AGENCIES OF THE
DEPARTMENT OF DEFENSE.

NOTES:

- ① (a) CLASS E IS CANCELLED AFTER 1 JAN 1991. MANUFACTURERS MAY CONTINUE TO SUPPLY MS3108E CONNECTORS UNTIL 1 JAN 1992 OR EXHAUST THEIR INVENTORIES, WHICHEVER COMES FIRST. FOR REPLACEMENT PURPOSES USE MS3108R WITH APPROPRIATE MIL-C-85049 CLAMP. FOR SHIPBOARD JACKETED CABLE USE MS3408.
- (b) MS3108E CONNECTORS REPLACE AND ARE INTERCHANGEABLE WITH CORRESPONDING AN3108E CONNECTORS.

EXAMPLE OF PART NUMBER:



DIMENSIONS IN INCHES. UNLESS OTHERWISE SPECIFIED, TOLERANCES: DECIMALS $\pm .016$.
THIS SPECIFICATION SHEET TAKES PRECEDENCE OVER DOCUMENTS REFERENCED HEREIN.
REFERENCED DOCUMENTS SHALL BE OF THE ISSUE IN EFFECT ON DATE OF INVITATIONS FOR BID.

① DENOTES CHANGE

PREPARING ACTIVITY: NAVY-AS
CUSTODIANS: ARMY-CR NAVY-AS
AIR FORCE-85

REVIEW: ARMY-MI, AV, ME, NAVY-SH, EC, AF-99
USER: ARMY-AT, NAVY-OS, MC, CG
PROJECT NUMBER: 5935-3692

MILITARY SPECIFICATION SHEET
TITLE CONNECTORS, PLUG, ELECTRIC,
SOLDER CONTACT, 90 DEGREE,
AN TYPE

SPECIFICATION SHEET NUMBER
MS3108 20 AUG 92
REV D

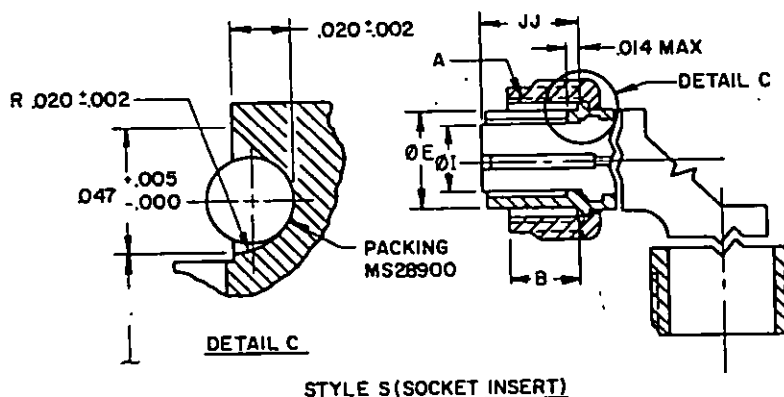
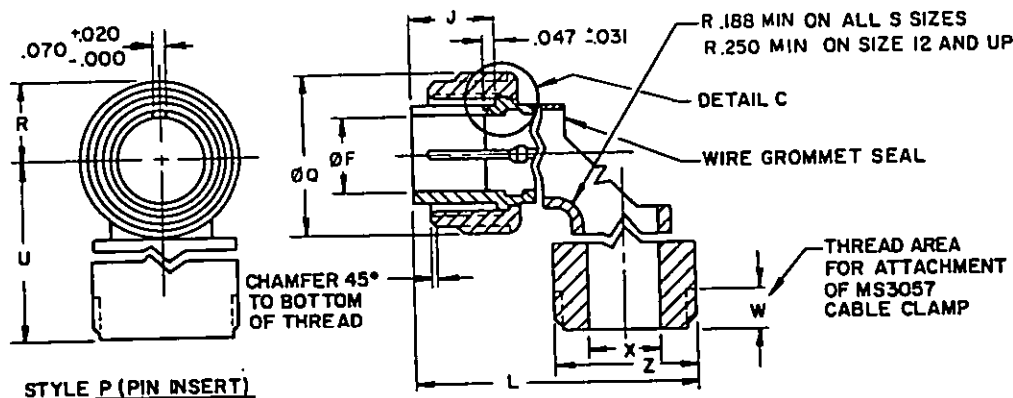
SUPERSEDING
MS3108 C 31 AUG 90

AMSC- N/A FSC 5935

DISTRIBUTION STATEMENT A Approved for public release; distribution is unlimited.

Page 6 of 8

THE REQUIREMENTS FOR ACQUIRING THE PRODUCT(S) DESCRIBED HEREIN SHALL CONSIST OF THIS SPECIFICATION SHEET AND THE ISSUE OF THE FOLLOWING SPECIFICATION LISTED IN THAT ISSUE OF THE DODISS SPECIFIED IN THE SOLICITATION: MIL-C-5015



CLASS R-ENVIRONMENT RESISTANT

SIZE	A COUPLING THREAD	B +.000/-0.062 EXTENSION RING	E +.000 -0.015 Ø INSIDE	F MIN Ø INSIDE	I MAX Ø INSERT	J +.005 LENGTH ENGAGE- MENT	JJ +.047 -0.000 INSERT LOCATION	L MAX OVERALL LENGTH	ØQ MAX COUPLING RING	U MAX	X CABLE CLEARANCE MIN	R MAX	W MIN USABLE THREAD	FOR INSERT ARRANGE- MENT SEE	PACKING MS28900 DASH NO.	ØV +.005 -0.010	Z MAX
85	1/2-28		.365	.252	.250			2.156	.844		.172	.422			-8	.355	1.046
105	5/8-24	.375	.440	.323	.320	.531	.531	2.188	.969	1.469	.281	.516			-10	.440	
105L			.446		.440					1.500		.562			-12	.555	1.125
125	3/4-20	.625	.555	.450	.448	.719	.719	2.531	1.062						-14	.675	1.343
145	7/8-20	.625	.675	.526	.525	.719	.719	2.688	1.156	1.594	.406	.625			-16	.805	1.484
165	1-20	.375	.805	.651	.650	.531	.531	2.406	1.250	1.688	.500	.688	.375		-18	.930	1.609
16								2.781				.750			-20	1.050	1.890
18	1-1/8-18		.930	.776	.770			2.844	1.344	1.781	.531	.844			-22	1.175	2.170
20	1-1/4-18		1.050	.932	.925			3.250	1.469	1.969	.656	.906			-24	1.300	2.650
22	1-3/8-18	.625	1.175	1.026	1.020			3.250	1.594	2.000	.750	.906			-28	1.520	
24	1-1/2-18		1.300	1.151	1.145	.719	.719	3.719	1.719	2.125	.781	.953			-32	1.770	
28	1-3/4-18		1.520	1.370	1.365			3.719	1.969	2.188	.922	1.094			-36	1.980	2.922
32	2-18		1.770	1.620	1.615			4.188	2.219	2.594	1.156	1.234	.438		-40	2.230	3.531
36	2-1/4-16		1.980	1.838	1.830			4.297	2.469	2.719	1.250	1.359					
40	2-1/2-16		2.230	2.057	2.047			7.411	2.719	4.730	1.562	1.422	.500				

PREPARING ACTIVITY: NAVY-AS

CUSTODIANS: ARMY-CR NAVY-AS

AIR FORCE-85

REVIEW: ARMY-MI, AV, ME, NAVY-SH, EC, AF-99

USER: ARMY-AT, NAVY-OS, MC, CG

PROJECT NUMBER: 5935-3892

MILITARY SPECIFICATION SHEET

TITLE CONNECTORS, PLUG, ELECTRIC,
SOLDER CONTACT, 90 DEGREE,
AN TYPE

SPECIFICATION SHEET NUMBER

MS3108

20 AUG 92
REV D

SUPERSEDING
MS3108 C

31 AUG 90

AMSC- N/A

FSC 5935

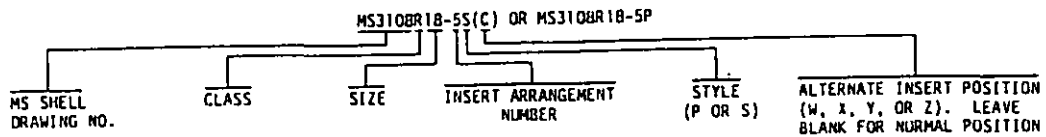
DISTRIBUTION STATEMENT A. Approved for public release; distribution is unlimited.

Page 7 of 8

NOTES:

- (D) (a) CLASS R IS INACTIVE FOR NEW DESIGN AFTER 1 JAN 1991. FOR SHIPBOARD JACKETED CABLE USE MS3408.
 (b) MS3108R CONNECTORS REPLACE AND ARE INTERCHANGEABLE WITH CORRESPONDING AN3108E CONNECTORS.

EXAMPLE OF PART NUMBER:



DIMENSIONS IN INCHES. UNLESS OTHERWISE SPECIFIED, TOLERANCES: DECIMALS $\pm .016$.
 THIS SPECIFICATION SHEET TAKES PRECEDENCE OVER DOCUMENTS REFERENCED HEREIN.
 REFERENCED DOCUMENTS SHALL BE OF THE ISSUE IN EFFECT ON DATE OF INVITATIONS FOR BID.

(D) DENOTES CHANGE

PREPARING ACTIVITY: NAVY-AS
 CUSTODIANS: ARMY-CR NAVY-AS
 AIR FORCE-85

REVIEW: ARMY-MI, AV, ME, NAVY-SH, EC, AF-99
 USER: ARMY-AT, NAVY-OS, MC, CG
 PROJECT NUMBER: 5935-3892

MILITARY SPECIFICATION SHEET
 TITLE CONNECTORS, PLUG, ELECTRIC,
 SOLDER CONTACT, 90 DEGREE,
 AN TYPE

SPECIFICATION SHEET NUMBER
MS3108 20 AUG 92
 REV D

SUPERSEDING
 MS3108 C 31 AUG 90

AMSC- N/A FSC 5935

DISTRIBUTION STATEMENT A. Approved for public release; distribution is unlimited.

Page 8 of 8