

FILE 2 (PWN INSERT)

SIZE	A COUPLING THREAD	B +.000/--.062 EXTENSION COUPLING RING	E +.000 -.015 Ø OUTSIDE	F MIN INSIDE	G MAX INSERT	J LENGTH ENGAGE- MENT +.005	(A) JJ +.031/--.000 INSERT LOCATION	L MAX OVERALL LENGTH	Q MAX OVERALL Ø OUTSIDE	V THREAD	W MIN USABLE THREAD	Z MAX CLASS B ONLY	FOR INSERT ARRANGEMENT SEE		
8S	1/2-28	.375	.365	.252	.250	.531	.562	1.469	.844	1/2-28		.844	MIL-STD- 1651		
10S	5/8-24		.440	.323	.320			1.531	.969			.969			
10SL			.446	—	.440				5/8-24			1.062			
12S	3/4-20	.625	.555	.450	.445	.719	.750	1.688				1.062			1.062
12								2.062	3/4-20	.375	1.156				
14S	7/8-20	.375	.675	.526	.525	.531	.562	1.688			1.156			1.156	
14		.625				.719	.750	2.062							
16S	1 -20	.375	.805	.651	.650	.531	.562	1.688	1.250	7/8-20		1.250			
16		.625				.719	.750		1.250			1.250			
18	1-1/8-18		.930	.776	.770			2.062	1.344	1 -20		1.641			
20	1-1/4-18		1.050	.932	.925				1.469	1-3/16-18		1.812			
	1-3/8-18		1.175	1.026	1.020			2.188	1.594			1.938			
24	1-1/2-16		1.300	1.151	1.145				1.719	1-7/16-18		2.062			
28	1-3/4-18		1.520	1.370	1.365			2.312	1.969			2.312			
32	2 -18		1.770	1.620	1.615			2.438	2.219	1-3/4-18	.438	2.594			
36	2-1/4-16		1.960	1.838	1.830				2.469	2 -18	.500	2.844			
40	2-1/2-16		2.230	2.057	2.047				2.719	2-1/4-16		3.000			

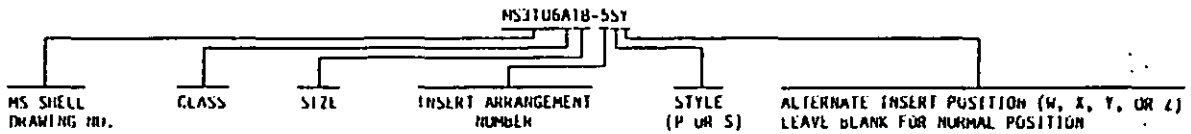
SPECIFICATION SHEET NUMBER		20 AUG 92
MS3106		REV D
SUPERSEDING MS3106 : C		31 AUG 90
AMSC- N/A	FSC 5935	

Page 1 of 10

NOTES:

- (D) (a) CLASS A IS CANCELLED AFTER 1 JAN 1991. FOR NEW DESIGN USE MS3456W WITH APPROPRIATE M85049/31 BACKSHELL. FOR SHIPBOARD JACKETED CABLES USE MS3406.
 (b) WHERE RESILIENT INSERTS ARE USED, IT MAY BE .109 LESS THAN THAT INDICATED.
 (c) SOCKET INSERT OF HARD MATERIAL SHALL EXTEND .016 MAXIMUM BEYOND OR .032 MAXIMUM BELOW SHELL. SOCKET INSERT OF RESILIENT MATERIAL SHALL EXTEND .047 + .000 - .047 BEYOND SHELL AS SHOWN.
 (d) CONNECTORS MS3106A REPLACE AND ARE INTERCHANGEABLE WITH CORRESPONDING MS3106A (OR B) CONNECTORS.

EXAMPLE OF PART NUMBER:



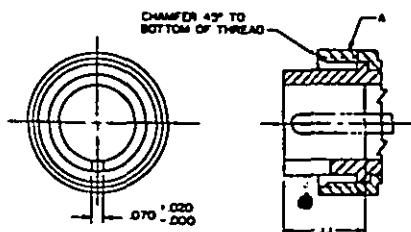
DIMENSIONS IN INCHES. UNLESS OTHERWISE SPECIFIED, TOLERANCES: DECIMALS $\pm .016$.
 THIS SPECIFICATION SHEET TAKES PRECEDENCE OVER DOCUMENTS REFERENCED HEREIN.
 REFERENCED DOCUMENTS SHALL BE OF THE ISSUE IN EFFECT ON DATE OF INVITATIONS FOR BID.

CERTAIN PROVISIONS OF THIS SPECIFICATION SHEET ARE THE SUBJECT OF INTERNATIONAL STANDARDIZATION AGREEMENTS NEPR 28 AND STANAG 3947. WHEN AMENDMENT, REVISION OR CANCELLATION OF THIS SPECIFICATION SHEET IS PROPOSED WHICH WILL MODIFY THE INTERNATIONAL AGREEMENT CONCERNED, THE PREPARING ACTIVITY WILL TAKE APPROPRIATE ACTION THROUGH INTERNATIONAL STANDARDIZATION OFFICES TO CHANGE THE AGREEMENT OR MAKE OTHER APPROPRIATE ACCOMMODATIONS.

⑤ DENOTES CHANGE

PREPARING ACTIVITY: NAVY-AS CUSTODIANS: ARMY-CR NAVY-AS AIR FORCE-85 NASA-NA REVIEW: ARMY-MI, AV, ME, NAVY-SH, EC, AF-39 USER: ARMY-AT, NAVY-OS, MC, CG PROJECT NUMBER: 5935-3890	MILITARY SPECIFICATION SHEET TITLE CONNECTOR, PLUG, ELECTRIC, STRAIGHT, SOLDER CONTACTS, AN TYPE	SPECIFICATION SHEET NUMBER 20 AUG 92 MS3106 REV D SUPERSEDING MS3106 C 31 AUG 90 AMSC- N/A FSC 5935
DISTRIBUTION STATEMENT A Approved for public release; distribution is unlimited.		Page 2 of 10

STYLE 3 (SOCKET INSERT)



STYLE P (PIN INSERT)

CLASS K- FIREWALL

SIZE	A COUPLING THREAD	B +.000/--.062 EXTENSION COUPLING RING	E +.000 -.015 Ø OUTSIDE	F MIN Ø INSIDE	H T MAX INSERT	J LENGTH ENGAGE- MENT	(a) JJ +.031/--.000 INSERT LOCATION	L MAX OVERALL LENGTH	Q MAX OVERALL Ø OUTSIDE	V THREAD	W MIN	Z MAX	FOR INSERT ARRANGEMENT SEE		
8S	1/2-28	.375	.365	.252	.250	.531	.562	2.188	.844	1/2-28	.375	.844	MIL-STD- 1651		
10S	5/8-24		.440	.323	.320				.969			.969			
10SL			.446		.440				5/8-24			1.062			
12S	3/4-20		.555	.450	.448							1.062			
12		.625				.719	.750	2.075							
14S	7/8-20	.375	.675	.526	.525	.531	.562	2.188	1.172	3/4-20		1.156			
14		.625				.719	.750	2.075							
16S	1 -20	.375	.805	.651	.650	.531	.562	2.188	1.266	7/8-20		1.250			
16		.625				.719	.750	2.075	1.266						
18	1-1/8-18		.930	.776	.770				1.359	1-3/16-18		1.641			
20	1-1/4-18		1.050	.932	.925				1.484			1.812			
22	1-3/8-18		1.175	1.026	1.020				1.609			1.938			
24	1-1/2-18		1.300	1.151	1.145			3.125	1.734		1-7/16-18	2.062			
28	1-3/4-18		1.520	1.370	1.365				1.904			2.312			
32	2 -18		1.770	1.620	1.615				2.234	1-3/4-18		2.594			
36	2-1/4-18		1.980	1.838	1.830				2.484	2	2.844				

PREPARING ACTIVITY: NAVY-AS
CUSTODIANS: ARMY-CR NAVY-AS
AIR FORCE-BS NASA-NA
REVIEW: ARMY-MI, AV, ME, NAVY-SH, EC, AF-99
USER: ARMY-AT, NAVY-OS, MC, CG
PROJECT NUMBER: 5935-3890

MILITARY SPECIFICATION SHEET

TITLE CONNECTOR, PLUG, ELECTRIC,
STRAIGHT, SOLDER CONTACTS,
AN TYPE

SPECIFICATION SHEET NUMBER		20 AUG 92
MS3106		REV D
SUPERSEDING		
MS3106 C		31 AUG 90
AMSC-	N/A	FSC 5935

DISTRIBUTION STATEMENT A. Approved for public release; distribution is unlimited.

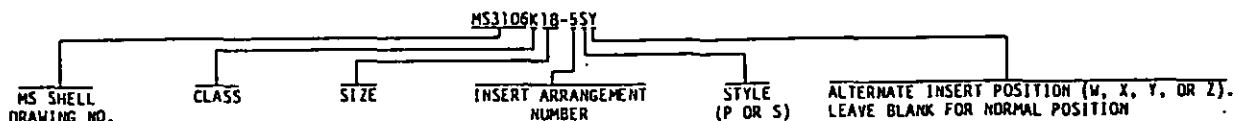
Page 3 of 10

NOTES:

- ① (a) CLASS K IS INACTIVE FOR NEW DESIGN AFTER 1 JAN 1991. FOR NEW DESIGN USE MS3456K WITH APPROPRIATE MS5049/31 BACKSHELL. FOR SHIPBOARD JACKETED CABLES USE MS3406.

- (b) CONNECTORS MS3106K REPLACE AND ARE INTERCHANGEABLE WITH CORRESPONDING AN3106K CONNECTORS.

EXAMPLE OF PART NUMBER:



DIMENSIONS IN INCHES. UNLESS OTHERWISE SPECIFIED, TOLERANCES: DECIMALS ± 0.016 .
THIS SPECIFICATION SHEET TAKES PRECEDENCE OVER DOCUMENTS REFERENCED HEREIN.
REFERENCED DOCUMENTS SHALL BE OF THE ISSUE IN EFFECT ON DATE OF INVITATIONS FOR BID.

① DENOTES CHANGE

PREPARING ACTIVITY: NAVY-AS
CUSTODIANS: ARMY-CR NAVY-AS
AIR FORCE-85 NASA-NA
REVIEW: ARMY-MI, AV, ME, NAVY-SH, EC, AF-99
USER: ARMY-AT, NAVY-OS, MC, CG
PROJECT NUMBER: 5933-3890

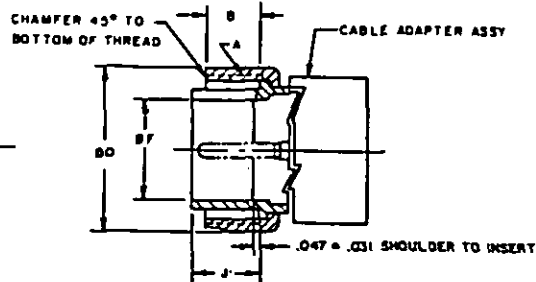
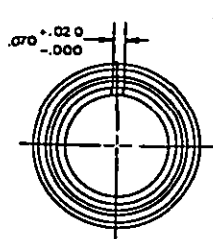
MILITARY SPECIFICATION SHEET
TYPE CONNECTOR, PLUG, ELECTRIC,
STRAIGHT, SOLDER CONTACTS,
AN TYPE

SPECIFICATION SHEET NUMBER
MS3106 20 AUG 92
REV D
SUPERSEDING
MS3106 C 31 AUG 90
AMSC- N/A FSC 5935

DISTRIBUTION STATEMENT A. Approved for public release; distribution is unlimited.

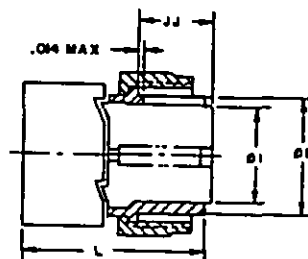
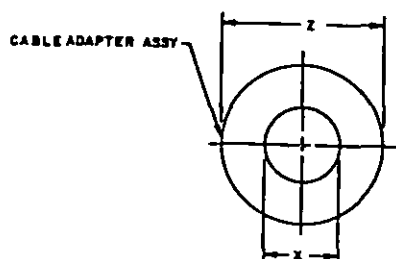
Page 4 of 10

THE REQUIREMENTS FOR ACQUIRING THE PRODUCT(S) DESCRIBED HEREIN SHALL CONSIST OF THIS SPECIFICATION SHEET AND THE ISSUE OF THE FOLLOWING SPECIFICATION LISTED IN THAT ISSUE OF THE DODISS SPECIFIED IN THE SOLICITATION: MIL-C-5015



Form approved
OMB No. 0704-0188

STYLE P (PIN INSERT)



STYLE S (SOCKET INSERT)

CLASS E-ENVIRONMENT RESISTANT

SIZE	A COUPLING THREAD	B +.000 -.062 EXTENSION COUPLING RING	E +.000 -.015 B OUTSIDE	F MIN INSIDE	G1 MAX INSERT	J +.005 LENGTH ENGAGE- MENT	J1 +.047 -.000 INSERT LOCATION	L MAX OVER- ALL LENGTH	O COUPLING NUT MAX B OUTSIDE	X MIN CABLE CLEARANCE	Z MAX ACROSS ADAPTER ASSY	FOR INSERT ARRANGEMENT SEE	
85	1/2-28	.375	.365	.252	.250	.531	.531	2.250	.644	.172	1.046	MIL-STD-1651	
105	5/8-24		.440	.323	.320				.969	.281	1.125		
105L			.446	--	.440								
125	3/4-20		.555	.450	.448				1.062	.406	1.343		
12		.625			.719	.719	2.625						
145	7/8-20	.375	.675	.526	.525	.531	.531	2.250	1.156				
14		.625				.719	.719	2.625					
165	1 -20	.375	.805	.651	.650	.531	.531	2.250	1.250	.500	1.484		
16								2.625					
18	1-1/8-18	.625	.776	.770		.719	.719	2.688	1.344	.531	1.609		
20	1-1/4-18		.950	.932	.925			2.750	1.469	.656	1.890		
22	1-3/8-18		1.175	1.026	1.020				1.594	.750			
24	1-1/2-18		1.300	1.151	1.145			2.969	1.719	.781	2.170		
28	1-3/4-18		1.520	1.370	1.365				1.969	.922			
32	2 -18		1.770	1.620	1.615			3.031	2.219	1.156	2.656		
36	2-1/4-16		1.980	1.830	1.830			3.281	2.469	1.250	2.922		
40	2-1/2-16		2.230	2.057	2.045			3.500	2.719	1.562	3.520		

PREPARING ACTIVITY: NAVY-AS

CUSTODIANS: ARMY-CR

NAVY-AS

AIR FORCE-85

NASA-NA

REVIEW: ARMY-MI, AV, ME, NAVY-SH, EC, AF-99

USER: ARMY-AT, NAVY-OS, MC, CG

PROJECT NUMBER: 5935-3890

MILITARY SPECIFICATION SHEET

TITLE CONNECTOR, PLUG, ELECTRIC,
STRAIGHT, SOLDER CONTACTS,
AN TYPE

SPECIFICATION SHEET NUMBER

MS3106

20 AUG 92

REV D

SUPERSEDING
MS3106 C

31 AUG 90

AMSC- N/A

FSC 5935

DISTRIBUTION STATEMENT A Approved for public release; distribution is unlimited.

Page 5 of 10

DD

FORM

672

MAY 1988

PREVIOUS EDITIONS OF THIS FORM ARE OBSOLETE

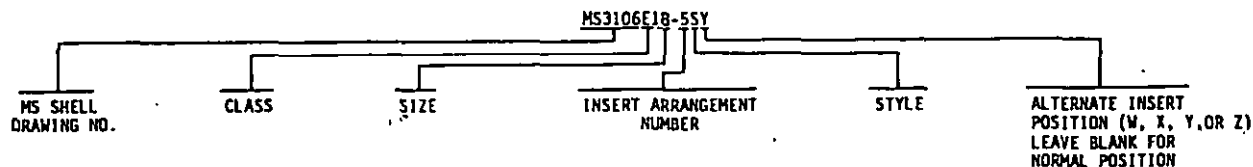
143000

THIS SPECIFICATION IS APPROVED FOR USE
BY ALL DEPARTMENTS AND AGENCIES OF THE
DEPARTMENT OF DEFENSE.

NOTES:

- (D) (a) CLASS E IS CANCELLED AFTER 1 JAN 1991. FOR REPLACEMENT PURPOSES USE MS3106F FOR CONNECTOR WITH CLAMP AND 3106R FOR CONNECTOR WITH GROMMET SEAL. MANUFACTURERS MAY CONTINUE TO SUPPLY MS3106E CONNECTORS UNTIL 1 JAN 1992 OR EXHAUST THEIR INVENTORIES, WHICHEVER COMES FIRST. FOR NEW DESIGN USE MS3456W WITH APPROPRIATE M85049/31 BACKSHELL. FOR SHIPBOARD JACKETED CABLES USE MS3406.
- (b) CONNECTORS MS3106E REPLACE AND ARE INTERCHANGEABLE WITH CORRESPONDING AN3106E CONNECTORS.

EXAMPLE OF PART NUMBER:

DIMENSIONS ARE IN INCHES. UNLESS OTHERWISE SPECIFIED, TOLERANCES: DECIMALS $\pm .016$.

THIS SPECIFICATION SHEET TAKES PRECEDENCE OVER DOCUMENTS REFERENCED HEREIN.

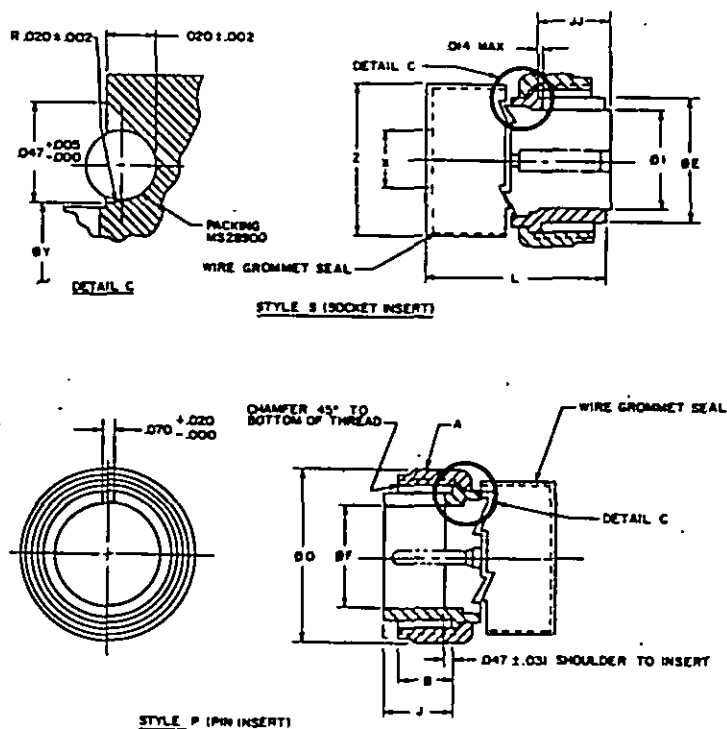
REFERENCED DOCUMENTS SHALL BE OF THE ISSUE IN EFFECT ON DATE OF INVITATIONS FOR BID.

(D) DENOTES CHANGE

PREPARING ACTIVITY: NAVY-AS CUSTODIANS: ARMY-CR NAVY-AS AIR FORCE-85 NASA-NA REVIEW: ARMY-MI, AV, ME, NAVY-SH, EC, AF-99 USER: ARMY-AT, NAVY-OS, MC, CG PROJECT NUMBER: 5935-3890	MILITARY SPECIFICATION SHEET TITLE CONNECTOR, PLUG, ELECTRIC, STRAIGHT, SOLDER CONTACTS, AN TYPE	SPECIFICATION SHEET NUMBER 20 AUG 92 MS3106 REV D SUPERSEDING 31 AUG 90 MS3106 C AMSC- N/A FSC 5935
DISTRIBUTION STATEMENT <u>A</u> Approved for public release; distribution is unlimited.		Page <u>6</u> of <u>10</u>

THE REQUIREMENTS FOR ACQUIRING THE PRODUCT(S) DESCRIBED HEREIN SHALL CONSIST OF THIS SPECIFICATION SHEET AND THE ISSUE OF THE FOLLOWING SPECIFICATION LISTED IN THAT ISSUE OF THE DODDS SPECIFIED IN THE SOLICITATION: MIL-C-5015

THIS SPECIFICATION IS APPROVED FOR USE
BY ALL DEPARTMENTS AND AGENCIES OF THE
DEPARTMENT OF DEFENSE.



CLASS R-ENVIRONMENT RESISTANT

SIZE	A COUPLING THREAD	B +.000 -.062 EXTENSION COUPLINE RING	E +.000 -.015 Ø OUTSIDE	F MIN Ø INSIDE	ØI MAX INSERT	J +.005 LENGTH ENGAGE- MENT	JJ +.047 -.000 INSERT LOCATION	L (A) MAX OVERALL LENGTH	O COUPLING NUT MAX MAX Ø OUTSIDE	X MIN CABLE CLEARANCE	ØY +.005 -.010	Z MAX ACROSS WIRE GROMMET SEAL	FOR INSERT ARRANGEMENT SEE DRAWING	PACKING MS28900 DASH NO	
8S	1/2-28	.375	.365	.252	.250	.531	.531	1.838	.844	.172	.355	1.046	MIL-STD- 1651	-8	
10S	5/8-24		.440	.323	.320				.440		-10				
10SL			.446	—	.440				.969	.281	.446	1.125		-12	
12S	3/4-20	.625	.555	.450	.448	.719	.719	2.181	1.062		.555	1.345		-14	
14S	7/8-20		.675	.526	.525				1.156	.406	.675			-16	
16S	1-20	.625	.805	.651	.650	.719	.719	2.181	1.250	.500	.805	1.484		-18	
18	1-1/8-18		.930	.776	.770				2.281	1.344	.531	.930		1.609	-20
20	1-1/4-18		1.050	.932	.925			2.322		1.469	.656	1.050		1.890	
22	1-3/8-18		1.175	1.026	1.020				1.594	.750	1.175	-24			
24	1-1/2-18		1.300	1.151	1.145			2.430	1.719	.781	1.300	2.656		-28	
28	1-3/4-18		1.520	1.370	1.365				1.969	.922	1.520			-32	
32	2-18		1.770	1.620	1.615				2.219	1.156	1.770			-36	
36	2-1/4-16		1.980	1.838	1.830			2.430	2.469	1.250	1.980	2.922		-40	
40	2-1/2-16		2.230	2.057	2.045				2.719	1.562	2.230	3.328		-40	

PREPARING ACTIVITY: NAVY-AS
CUSTODIANS: ARMY-CR NAVY-AS
AIR FORCE-BS NASA-NA
REVIEW: ARMY-MI, AV, ME, NAVY-SH, EC, AF-99
USER: ARMY-AT, NAVY-OS, MC, CG
PROJECT NUMBER: 9335-3890

MILITARY SPECIFICATION SHEET

TITLE CONNECTOR, PLUG, ELECTRIC,
STRAIGHT, SOLDER CONTACTS,
AN TYPE

SPECIFICATION SHEET NUMBER		20 AUG 92
MS3106		REV D
SUPERSEDING		
MS3106 C		31 AUG 90
AMSC - N/A	FSC 5935	

DISTRIBUTION STATEMENT A Approved for public release; distribution is unlimited.

Page 7 of 10

Form approved
OMB No. 0704-0188

NOTES:

- (a) CLASS R IS INACTIVE FOR NEW DESIGN AFTER 1 JAN 1991. FOR NEW DESIGN USE MS3456W CONNECTOR WITH APPROPRIATE M85049/31 BACKSHELL. FOR SHIPBOARD JACKETED CABLES USE MS3406.
- (b) ADD .375 FOR SIZE "0" CONTACTS.
- (c) CONNECTORS MS3106R REPLACE AND ARE INTERCHANGEABLE WITH CORRESPONDING MS3106E AND AN3106E CONNECTORS WITHOUT SAUOLE TYPE CABLE CLAMP.

EXAMPLE OF PART NUMBER:

MS SHELL CLASS SIZE INSERT ARRANGEMENT STYLE ALTERNATE INSERT POSITION (W, X, Y, OR Z)
DRAWING NO. NUMBER (P OR S) LEAVE BLANK FOR NORMAL POSITION

MS3106R18-SSY

DIMENSIONS IN INCHES. UNLESS OTHERWISE SPECIFIED, TOLERANCES: DECIMALS $\pm .010$.
THIS SPECIFICATION SHEET TAKES PRECEDENCE OVER DOCUMENTS REFERENCED HEREIN.
REFERENCED DOCUMENTS SHALL BE OF THE ISSUE IN EFFECT ON DATE OF INVITATIONS FOR BID.

ⓐ DENOTES CHANGE

PREPARING ACTIVITY: NAVY-AS
CUSTODIANS: ARMY-CR NAVY-AS
AIR FORCE-85 NASA-NA
REVIEW: ARMY-MI, AV, ME, NAVY-SH, EC, AF-99
USER: ARMY-AT, NAVY-OS, MC, CG
PROJECT NUMBER: 5935-3890

MILITARY SPECIFICATION SHEET
TITLE CONNECTOR, PLUG, ELECTRIC,
STRAIGHT, SOLDER CONTACTS,
AN TYPE

SPECIFICATION SHEET NUMBER
MS3106 20 AUG 92
REV D
SUPERSEDING
MS3106 C 31 AUG 90
AMSC- N/A FSC 5935

DISTRIBUTION STATEMENT A. Approved for public release; distribution is unlimited.

Page 8 of 10

DD FORM 672 MAY 1988

PREVIOUS EDITIONS OF THIS FORM ARE OBSOLETE

142904

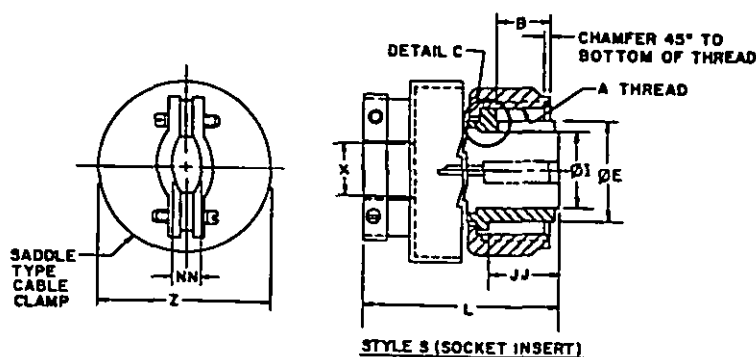
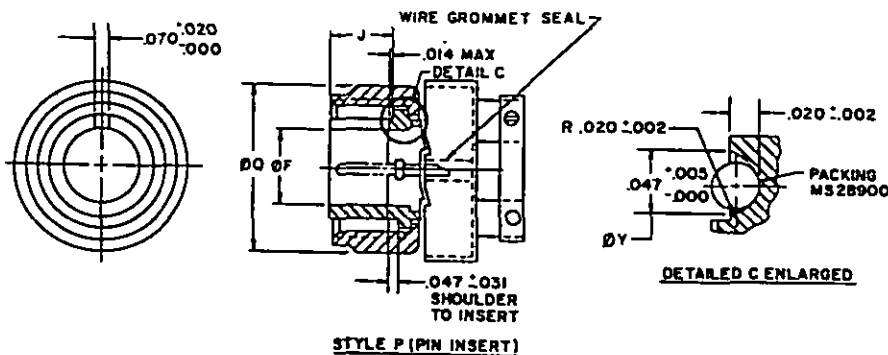
THE REQUIREMENTS FOR ALLOCATING THE PRODUCT(S) DESCRIBED HEREIN SHALL CONSIST OF THIS SPECIFICATION SHEET AND THE ISSUE OF THE FOLLOWING SPECIFICATION LISTED IN THAT ISSUE OF THE DODISS SPECIFIED IN THE SOLICITATION: MIL-C-5015

BY ALL DEPARTMENTS AND AGENCIES OF THE
DEPARTMENT OF DEFENSE.

THE REQUIREMENTS FOR ACQUIRING THE PRODUCT(S) DESCRIBED HEREIN SHALL CONSIST OF THIS SPECIFICATION SHEET AND THE ISSUE OF THE FOLLOWING SPECIFICATION LISTED IN THAT ISSUE OF THE DODISS SPECIFIED IN THE SOLICITATION: MIL-C-5015

THIS SPECIFICATION IS APPROVED FOR USE BY ALL DEPARTMENTS AND AGENCIES OF THE DEPARTMENT OF DEFENSE.

Form approved
OMB No. 0704-0188



CLASS F-ENVIRONMENT RESISTANT

SIZE	A COUPLING THREAD	B +.000 -.062 EXTENSION COUPLING RING	E +.000 -.015 OUTSIDE	F MIN INSIDE Ø	G Ø1 MAX INSERT	J +.005 LENGTH ENGAGE- MENT	JJ +.047 -.000 INSERT LOCATION	L (A) MAX OVERALL LENGTH	O COUPLING NUT MAX Ø OUTSIDE	NN MAX CLOSED	I MIN CABLE CLEARANCE	ØY +.005 -.010	Z MAX ACROSS CLAMP	FOR INSERT ARRANGEMENT SEE DRAWING	PACKING MS28900 DASH NO.
85	1/2-28		.365	.252	.250				.844		.172	.355	1.046		-8
105	5/8-28	.375	.440	.323	.320			2.312	.969	.200		.440			-10
105L			.446		.440							.446			
125	3/4-20		.555	.450	.448				1.062		.281	.555	1.125		-12
12		.625				.719	.719	2.656							
145	7/8-20	.375	.675	.526	.525	.531	.531	2.312	1.156	.312	.406	.675	1.343	MIL-STD-1651	-14
14		.625				.719	.719	2.656							
165	1-20	.375	.805	.651	.650	.531	.531	2.312	1.250	.360	.500	.805	1.484		-16
16								2.656							
18	1-1/8-18		.930	.776	.770				1.344	.422	.531	.9	1.609		-18
20	1-1/4-18		1.050	.932	.925			2.781	1.469		.656	1.050			-20
22	1-1/8-18	.625	1.175	1.026	1.020				1.594	.531	.740	1.175	1.890		-22
24	1-1/2-18		1.300	1.151	1.145	.719	.719	2.969	1.719		.781	1.300	2.170		-24
28	1-3/4-18		1.520	1.370	1.365			3.031	1.969	.594	.922	1.520			-28
32	2-18		1.770	1.620	1.615			3.250	2.219		1.156	1.770	2.656		-32
36	2-1/4-16		1.980	1.838	1.830			3.281	2.469	.790	1.250	1.980	2.922		-36
40	2-1/2-16		2.230	2.057	2.045			3.500	2.723	1.100	1.562	2.230	3.531		-40

PREPARING ACTIVITY: NAVY-AS

CUSTODIANS: ARMY-CR

NAVY-AS

AIR FORCE-85

NASA-NA

REVIEW: ARMY-MI, AV, ME, NAVY-SH, EC, AF-99

USER: ARMY-AT, NAVY-OS, MC, CG

PROJECT NUMBER: 5935-3890

MILITARY SPECIFICATION SHEET

TITLE CONNECTOR, PLUG, ELECTRIC,
STRAIGHT, SOLDER CONTACTS,
AN TYPE

SPECIFICATION SHEET NUMBER

MS3106

20 AUG 92

REV D

SUPERSEDING
MS3106 C

31 AUG 90

AMSC- N/A

FSC 5935

DISTRIBUTION STATEMENT A. Approved for public release; distribution is unlimited.

Page 9 of 10

DD FORM 672 MAY 1988

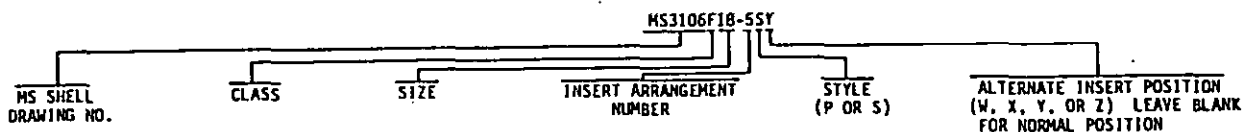
PREVIOUS EDITIONS OF THIS FORM ARE OBSOLETE

14 20004

NOTES:

- (a) CLASS F IS INACTIVE FOR NEW DESIGN AFTER 1 JAN 1991. FOR NEW DESIGN USE MS3456W WITH APPROPRIATE M85049/52 BACKSHELL. FOR SHIPBOARD JACKETED CABLES USE MS3406.
- (b) ADD .375 FOR SIZE "0" CONTACTS.
- (c) CONNECTORS MS3106F REPLACE AND ARE INTERCHANGEABLE WITH CORRESPONDING MS3106E AND AN3106E CONNECTORS WITH SADDLE TYPE CABLE CLAMPS.

EXAMPLE OF PART NUMBER:

DIMENSIONS ARE IN INCHES. UNLESS OTHERWISE SPECIFIED, TOLERANCES: DECIMALS $\pm .016$.

THIS SPECIFICATION SHEET TAKES PRECEDENCE OVER DOCUMENTS REFERENCED HEREIN.

REFERENCED DOCUMENTS SHALL BE OF THE ISSUE IN EFFECT ON DATE OF INVITATIONS FOR BID.

⑤ DENOTES CHANGE

PREPARING ACTIVITY: NAVY-AS
 CUSTODIANS: ARMY-CR NAVY-AS
 AIR FORCE-85 NASA-NA
 REVIEW: ARMY-MI, AV, ME, NAVY-SH, EC, AF-99
 USER: ARMY-AT, NAVY-OS, MC, CG
 PROJECT NUMBER: 5935-3890

MILITARY SPECIFICATION SHEET
 TITLE CONNECTOR, PLUG, ELECTRIC,
 STRAIGHT, SOLDER CONTACTS,
 AN TYPE

SPECIFICATION SHEET NUMBER
MS3106 20 AUG 92
 REV D
 SUPERSEDING
 MS3106 C 31 AUG 90
 AMSC- N/A FSC 5935

DISTRIBUTION STATEMENT A Approved for public release; distribution is unlimited.

Page 10 of 10

THE REQUIREMENTS FOR ACQUIRING THE PRODUCT(S) DESCRIBED HEREIN SHALL CONSIST OF THIS SPECIFICATION SHEET AND THE ISSUE OF THE FOLLOWING SPECIFICATION LISTED IN THAT ISSUE OF THE DODISS SPECIFIED IN THE SOLICITATION: MIL-C-5015

THIS SPECIFICATION IS APPROVED FOR USE BY ALL DEPARTMENTS AND AGENCIES OF THE DEPARTMENT OF DEFENSE.