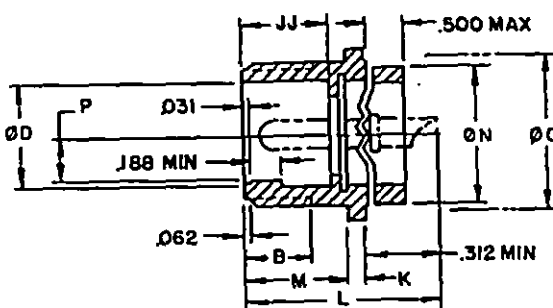
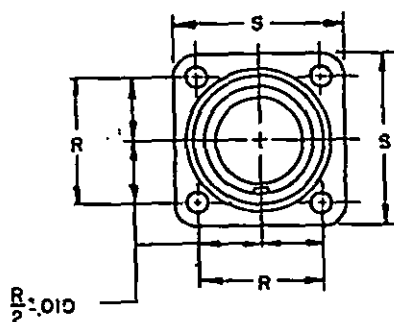


STYLE S (SOCKET INSERT)

CLASS A-SOLID SHELL
CLASS C-PRESSURIZED

STYLE P (PIN INSERT)

SIZE	A COUPLING THREAD	B MIN USABLE THREAD	D +.015 -.000 Ø INSIDE	Ø I MAX INSERT	(C) JJ +.031 -.000 INSERT LOCATION	K THICKNESS MOUNTING FLANGE	L MAX OVERALL LENGTH	M +.031/+.000 MOUNTING FLANGE LOCATION	(P) N +.000 -.188 Ø OUTSIDE	Ø O (ref) MOUNTING HOLE	P +.015 -.000 KEY HEIGHT	R +.005 CL - CL MOUNTING HOLE	S +.031 LENGTH SIDE	Ø T +.010/+.005 MOUNTING BOLT HOLE	FOR INSERT ARRANGEMENT SEE DRAWING
85	1/2-28		.370	.250						.532	.562	.130	.594	.875	
105	5/8-24	.375	.448	.320	.562		1.191	.562		.656	.688	.165	.719	1.000	
105L															
125	3/4-20		.557	.448		.156	.062			.812	.224	.812	1.094		
12		.625			.750		1.713	.750							
145	7/8-20	.375	.682	.525	.562		1.191	.562		.906	.938	.263	.906	1.188	.120
14		.625			.750		1.713	.750							
165	1-20	.375	.807	.650	.562		1.191	.562		1.032	1.062	.325	.969	1.281	
16							1.750								
18	1-1/8-18		.932	.770				.750		1.156	1.188	.385	1.062	1.375	
20	1-1/4-18		1.058	.925						1.282	1.312	.463	1.156	1.500	
22	1-3/8-18		1.182	1.020						1.406	1.438	.510	1.250	1.625	
24	1-1/2-18	.625	1.307	1.145	.750	.203	.094	1.938		1.532	1.562	.573	1.375	1.750	.147
28	1-3/4-18		1.526	1.365					.812	1.782	1.812	.683	1.562	2.000	
32	2-18		1.776	1.615						2.032	2.062	.808	1.750	2.250	
36	2-1/4-16		1.995	1.830						2.282	2.312	.915	1.938	2.500	
40	2-1/2-16		2.245	2.045		.359	.125		.875	2.532	2.562	1.023	2.188	2.750	.173
44	2-3/4-16		2.495	2.300						2.782	2.812	1.150	2.375	3.000	
48	3-16		2.745	2.550				2.188		3.032	3.062	1.275	2.625	3.250	

PREPARING ACTIVITY: NAVY-AS
 CUSTODIANS: ARMY-CR NAVY-AS
 AIR FORCE-85 NASA-NA
 REVIEW: ARMY-MI, AV, ME, NAVY-SH, EC, AF-99
 USER: ARMY-AT, NAVY-OS, MC, CG
 PROJECT NUMBER: 5935-3889

MILITARY SPECIFICATION SHEET
 TITLE CONNECTOR, RECEPTACLE,
 ELECTRIC, BOX MOUNTING,
 SOLDER CONTACTS, AN TYPE

SPECIFICATION SHEET NUMBER
MS3102 20 AUG 92
 REV E

SUPERSEDING
 MS3102 0 31 AUG 90

AMSC- N/A FSC 5935

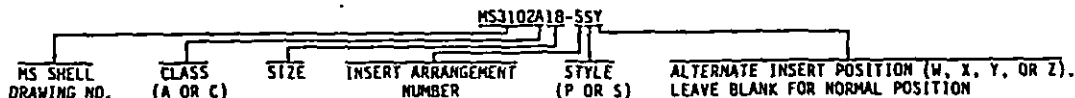
DISTRIBUTION STATEMENT A. Approved for public release; distribution is unlimited.

Page 1 of 7

NOTES:

- (e) (a) SIZES 8S THROUGH 40 OF CLASSES A AND C ARE CANCELLED AFTER 1 JAN 1991. FOR REPLACEMENT PURPOSES USE MS3102R. MANUFACTURERS MAY CONTINUE TO SUPPLY THESE SIZES OF CLASSES A AND C UNTIL 1 JAN 1992 OR EXHAUST THEIR INVENTORIES, WHICHEVER COMES FIRST. FOR NEW DESIGN USE MS3452W. FOR SHIPBOARD JACKETED APPLICATIONS USE MS3402.
- (b) SIZES 44 AND 48 OF CLASSES A AND C ARE INACTIVE FOR NEW DESIGN.
- (c) WHERE RESILIENT INSERTS ARE USED, JJ MAY BE .109 LESS THAN THAT INDICATED.
- (d) SOCKET INSERT OF HARD MATERIAL SHALL EXTEND .016 BEYOND OR .032 MAXIMUM BELOW SHELL. SOCKET INSERT OF RESILIENT MATERIAL SHALL EXTEND .047 \pm .000-.047 BEYOND SHELL AS SHOWN.
- (e) FOR SHELL SIZES 36 AND 40, N TOLERANCE \pm .000, \pm .250
- (f) CONNECTORS MS3102A (OR C) REPLACE AND ARE INTERCHANGEABLE WITH CORRESPONDING AN3102A (OR C) CONNECTORS.

EXAMPLE OF PART NUMBER:



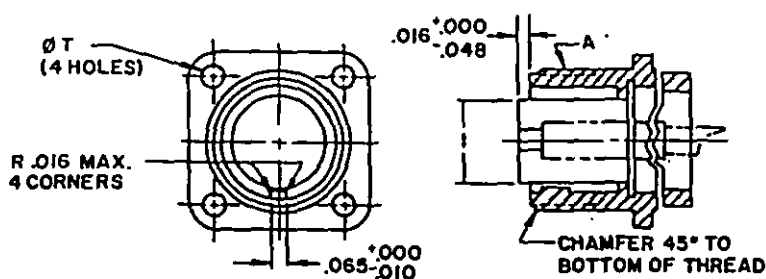
DIMENSIONS IN INCHES. UNLESS OTHERWISE SPECIFIED, TOLERANCES: DECIMALS \pm .016.
THIS SPECIFICATION SHEET TAKES PRECEDENCE OVER DOCUMENTS REFERENCED HEREIN.
REFERENCED DOCUMENTS SHALL BE OF THE ISSUE IN EFFECT ON DATE OF INVITATIONS FOR BID.

CERTAIN PROVISIONS OF THIS SPECIFICATION SHEET ARE THE SUBJECT OF INTERNATIONAL AGREEMENT NEPR 28 WHEN AMENDMENT, REVISION OR CANCELLATION OF THIS SPECIFICATION SHEET IS PROPOSED WHICH WILL MODIFY THE INTERNATIONAL STANDARDIZATION AGREEMENT CONCERNED, THE PREPARING ACTIVITY WILL TAKE APPROPRIATE ACTION THROUGH INTERNATIONAL STANDARDIZATION CHANNELS INCLUDING DEPARTMENTAL STANDARDIZATION OFFICES TO CHANGE THE AGREEMENT OR MAKE OTHER APPROPRIATE ACCOMMODATIONS.

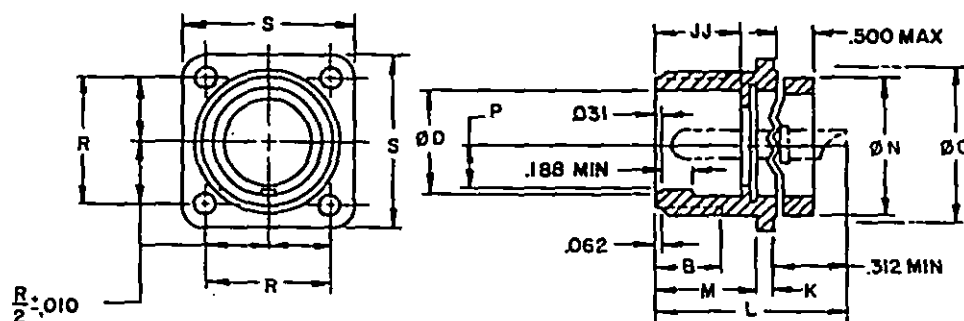
Ⓔ DENOTES CHANGE

PREPARING ACTIVITY: NAVY-AS CUSTODIANS: ARMY-CR NAVY-AS AIR FORCE-85 NASA-NA REVIEW: ARMY-MI, AV, ME, NAVY-SH, EC, AF-99 USER: ARMY-AT, NAVY-OS, MC, CG PROJECT NUMBER: 5935-3889	MILITARY SPECIFICATION SHEET TITLE CONNECTOR, RECEPTACLE, ELECTRIC, BOX MOUNTING, SOLDER CONTACTS, AN TYPE	SPECIFICATION SHEET NUMBER <div style="font-size: 1.5em; font-weight: bold;">MS3102</div> <div style="text-align: right;">20 AUG 92 REV E</div> <hr/> SUPERSEDING MS3102 D 31 AUG 90
		AMSC- N/A FSC 5935
DISTRIBUTION STATEMENT A. Approved for public release; distribution is unlimited.		Page 2 of 7

THE REQUIREMENTS FOR ACQUIRING THE PRODUCT(S) DESCRIBED HEREIN SHALL CONSIST OF THIS SPECIFICATION SHEET AND THE ISSUE OF THE FOLLOWING SPECIFICATION LISTED IN THAT ISSUE OF THE DODSS SPECIFIED IN THE SOLICITATION: MIL-C-5015



STYLE S (SOCKET INSERT)



STYLE P (PIN INSERT)

CLASS K - FIREWALL

SIX	A COUPLING THREAD	F HEX SCREW THREAD	B + .031 - .000 Ø H7/G6	Ø I H6/S6	J2 + .031 - .000 H7/G6 LOCATION	K H7 TUBES MOUNTING FLANGE	L H6 HOLE LENGTH	M + .031/- .000 H7/G6 MOUNTING FLANGE LOCATION	(A) Ø + .000 - .100 Ø OUTSIDE	Ø O (ref) H7/G6 HOLE HEIGHT	P + .015 - .000 H7/G6 Ø HEIGHT	R + .005 - .000 H7/G6 HOLE HEIGHT	S + .031 - .000 H7/G6 HOLE HEIGHT	Ø T + .015/- .025 H7/G6 MOUNTING BOLT HOLE	FOR INSERT ARRANGEMENT SEE
85	1/2-20		.370	.750			1.375		.532	.562	1.30	.594	.875		
105	5/8-24	.375	.448	.320	.562		1.438	.562	.656	.688	.145	.719	1.000		
105A															
125	3/4-20		.557	.648			1.612	.750	.782	.812	.224	.812	1.094		
12		.625		.750	.562	.062	1.630	.562						.150	
145	7/8-20	.375	.662	.525	.562		1.638	.750	.906	.938	.263	.906	1.188		
14		.625		.750	.562		1.638	.562							
165	1-20	.375	.807	.650	.562		2.062		1.832	1.067	.325	.969	1.281		
16															
18	1-1/8-18		.932	.770				.750	1.156	1.188	.385	1.062	1.375		
20	1-1/8-18		1.086	.925					1.282	1.212	.462	1.156	1.600		
22	1-3/8-18	.625	1.242	1.070	.750				1.406	1.336	.538	1.250	1.625		.177
24	1-1/2-18		1.387	1.145		.078			1.532	1.462	.573	1.375	1.750		
26	1-3/4-18		1.526	1.365			2.750	.812	1.782	1.812	.683	1.562	2.000		
32	2-10		1.776	1.615				.875	2.032	2.062	.808	1.750	2.250		
36	2-1/4-14		1.995	1.830		.125			2.282	2.212	.915	1.938	2.500		.209
40	2-1/2-16		2.245	2.045					2.532	2.562	1.023	2.188	2.750		

PREPARING ACTIVITY: NAVY-AS

CUSTODIANS: ARMY - CR

NAVY-AS

AIR FORCE-85

NASA-NA

REVIEW: ARMY-MI, AV, ME, NAVY-SH, EC, AF-99

USER: ARMY-AT, NAVY-OS, MC, CG

PROJECT NUMBER: 5935-3889

MILITARY SPECIFICATION SHEET

TITLE CONNECTOR, RECEPTACLE,
ELECTRIC, BOX MOUNTING,
SOLDER CONTACTS, AN TYPE

SPECIFICATION SHEET NUMBER

MS3102

20 AUG 92

REV E

SUPERSEDING
MS3102 D

31 AUG 90

ANSC-

N/A

FSC 5935

DISTRIBUTION STATEMENT A. Approved for public release; distribution is unlimited.

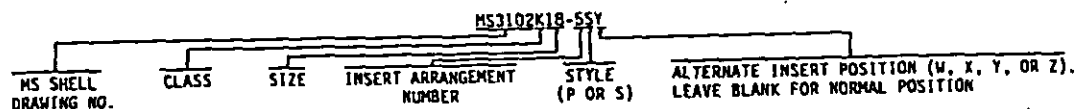
Page 3 of 7

Form approved
OMB No. 0704-0188

NOTES:

- (E) (a) CLASS K IS INACTIVE FOR NEW DESIGN AFTER 1 JAN 1991. FOR NEW DESIGN USE MS3452K.
FOR SHIPBOARD JACKETED CABLE USE MS3402.
(b) CONNECTORS MS3102K REPLACE AND ARE INTERCHANGEABLE WITH CORRESPONDING AN3102K CONNECTORS.

EXAMPLE OF PART NUMBER:



DIMENSIONS IN INCHES. UNLESS OTHERWISE SPECIFIED, TOLERANCES: DECIMALS $\pm .016$.
THIS SPECIFICATION SHEET TAKES PRECEDENCE OVER DOCUMENTS REFERENCED HEREIN.
REFERENCED DOCUMENTS SHALL BE OF THE ISSUE IN EFFECT ON DATE OF INVITATIONS FOR BID.

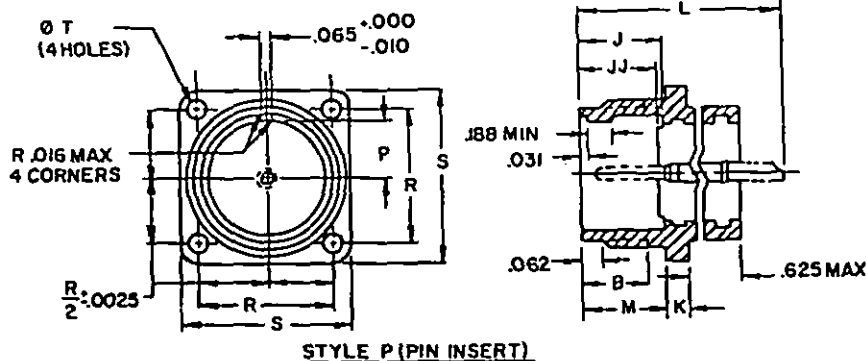
(E) DENOTES CHANGE

PREPARING ACTIVITY: NAVY-AS CUSTODIANS: ARMY-CR NAVY-AS AIR FORCE-BS NASA-NA REVIEW: ARMY-MI, AV, ME, NAVY-SH, EC, AF-99 USER: ARMY-AT, NAVY-OS, MC, CG PROJECT NUMBER: 5935-3889	MILITARY SPECIFICATION SHEET TITLE CONNECTOR, RECEPTACLE, ELECTRIC, BOX MOUNTING, SOLDER CONTACTS, AN TYPE	SPECIFICATION SHEET NUMBER 20 AUG 92 MS3102 REV E SUPERSEDING 31 AUG 90 MS3102 D AMSC- N/A FSC 5935
DISTRIBUTION STATEMENT A. Approved for public release; distribution is unlimited.		Page 4 of 7

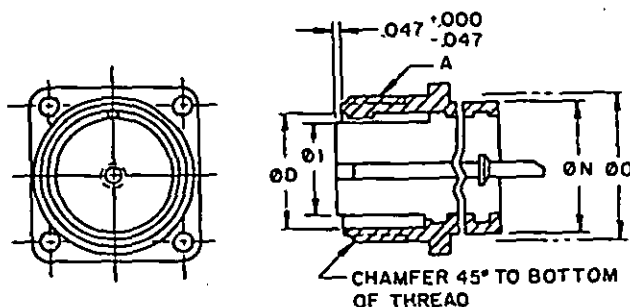
THE REQUIREMENTS FOR ACQUIRING THE PRODUCT(S) DESCRIBED HEREIN SHALL CONSIST OF THIS SPECIFICATION SHEET AND THE ISSUE OF THE FOLLOWING SPECIFICATION LISTED IN THAT ISSUE OF THE DODISS SPECIFIED IN THE SOLICITATION: MIL-C-5015

THIS SPECIFICATION IS APPROVED FOR USE BY ALL DEPARTMENTS AND AGENCIES OF THE DEPARTMENT OF DEFENSE.

THE REQUIREMENTS FOR ACQUIRING THE PRODUCT(S) DESCRIBED HEREIN SHALL CONSIST OF THIS SPECIFICATION SHEET AND THE ISSUE OF THE FOLLOWING SPECIFICATION LISTED IN THAT ISSUE OF THE DDGDS SPECIFIED IN THE SOLICITATION: MIL-C-5015



STYLE P (PIN INSERT)



STYLE S (SOCKET INSERT)

CLASS E - ENVIRONMENT RESISTANT

SIZE	A COMPLING THREAD	R MIN USABLE THREAD	D +.015 -+.000 Ø INSIDE	J1 MAX INSERT	J +.031 -+.000 INT SHELL SHOUL	J2 +.031 INSERT LOCATION	K THICKNESS MOUNTING FLANGE MAX MIN	L MAX OVERALL LENGTH	M +.031/-+.000 MOUNTING FLANGE LOCATION	(A) R +.000 -+.188 Ø OUTSIDE	Ø O (REF) MOUNTING HOLE	P +.015 -+.000 KEY HEIGHT	R +.005 CL-CL MOUNTING HOLE	S +.031 LENGTH SIDE	Ø T +.010/ -+.005 MOUNTING BOLT HOLE	FOR INSERT ARRANGEMENT SEE
85	1/2-28		.370	.250						.532	.562	.130	.594	.875		
105	5/8-24	.375	.448	.320	.562	.484		1.188	.562	.656	.688	.165	.719	1.000		
105L				.448						.782	.812	.224	.812	1.094		
125	3/4-20		.557													
12		.625			.750	.672	.156 .078	1.625	.750							
145	7/8-20	.375	.682	.525	.562	.484		1.188	.562	.906	.938	.263	.906	1.188		
14		.625			.750	.672		1.625	.750							
165	1 -20	.375	.807	.650	.562	.484		1.188	.562	1.032	1.062	.325	.969	1.281		
16								1.625								
18	1-1/8-18		.932	.770					.750	1.156	1.188	.385	1.062	1.375		
20	1-1/4-18		1.058	.925						1.282	1.312	.463	1.156	1.500		
22	1-3/8-18		1.182	1.020			.203 .094			1.406	1.438	.510	1.250	1.625		
24	1-1/2-18	.625	1.307	1.145	.750	.672		1.938	.812	1.532	1.562	.573	1.375	1.750	.147	
26	1-3/4-18		1.526	1.365						1.782	1.812	.683	1.562	2.000		
32	2 -18		1.776	1.615						2.032	2.062	.808	1.750	2.250		
36	2-1/4-16		1.995	1.830			.359 .125		.875	2.282	2.312	.915	1.938	2.500	.173	
40	2-1/2-16		2.245	2.047						2.532	2.562	1.023	2.188	2.750		

PREPARING ACTIVITY: NAVY-AS

CUSTODIANS: ARMY-CH NAVY-AS
AIR FORCE-85 NASA-NA

REVIEW: ARMY-MI, AV, ME, NAVY-SH, EC, AF-99
USER: ARMY-AT, NAVY-OS, MC, CG
PROJECT NUMBER: 5935-3889

MILITARY SPECIFICATION SHEET

TITLE CONNECTOR, RECEPTACLE,
ELECTRIC, BOX MOUNTING,
SOLDER CONTACTS, AN TYPE

SPECIFICATION SHEET NUMBER

MS3102

20 AUG 92
REV E

SUPERSEDING
MS3102 0

'31 AUG 90'

ANSC-	N/A
-------	-----

FSC 5935

DISTRIBUTION STATEMENT A. Approved for public release; distribution is unlimited.

Page 5 of 7

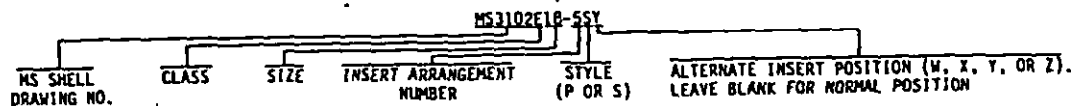
THE REQUIREMENTS FOR ACQUIRING THE PRODUCT(S) DESCRIBED HEREIN SHALL CONSIST OF THIS SPECIFICATION SHEET AND THE ISSUE OF THE FOLLOWING SPECIFICATION LISTED IN THAT ISSUE OF THE DODISS SPECIFIED IN THE SOLICITATION: MIL-C-5015

Form approved
OMB No. 0704-0188

NOTES:

- (E) (a) CLASS E IS CANCELLED AFTER 1 JAN 1991. FOR REPLACEMENT PURPOSES USE MS3102R. MANUFACTURERS MAY CONTINUE TO SUPPLY CLASS E UNTIL 1 JAN 1992 OR EXHAUST THEIR INVENTORIES, WHICHEVER COMES FIRST. FOR NEW DESIGN USE MS3452W. FOR SHIPBOARD JACKETED CABLES USE MS3402.
- (b) FOR SHELL SIZE 36 AND 40, N TOLERANCE IS $\pm .000$, $-.250$
- (c) CONNECTORS MS3102E REPLACE AND ARE INTERCHANGEABLE WITH CORRESPONDING AN3102E CONNECTORS.

PART NUMBER EXAMPLE:

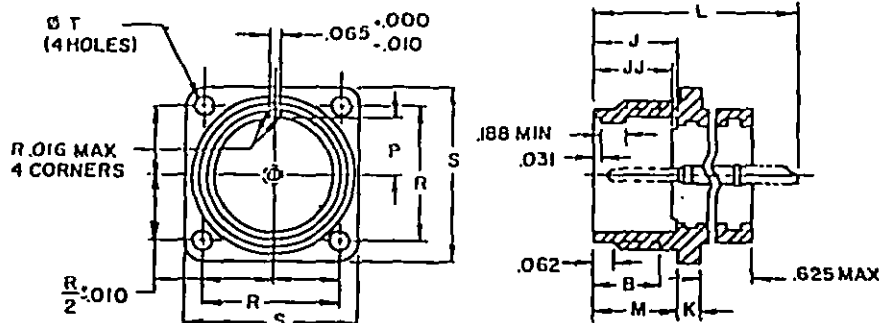


DIMENSIONS IN INCHES. UNLESS OTHERWISE SPECIFIED, TOLERANCES: DECIMALS $\pm .016$.
THIS SPECIFICATION SHEET TAKES PRECEDENCE OVER DOCUMENTS REFERENCED HEREIN.
REFERENCED DOCUMENTS SHALL BE OF THE ISSUE IN EFFECT ON DATE OF INVITATIONS FOR BID.

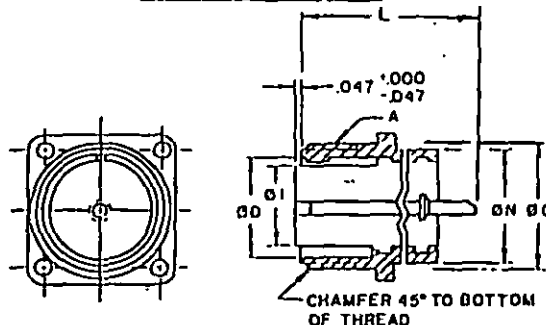
(E) DENOTES CHANGE

PREPARING ACTIVITY: NAVY-AS CUSTODIANS: ARMY-CR NAVY-AS AIR FORCE-85 NASA-NA REVIEW: ARMY-MI, AV, ME, NAVY-SH, EC, AF-99 USER: ARMY-AT, NAVY-OS, MC, CG PROJECT NUMBER: 5936-3889	MILITARY SPECIFICATION SHEET TITLE CONNECTOR, RECEPTACLE, ELECTRIC, BOX MOUNTING, SOLDER CONTACTS, AN TYPE	SPECIFICATION SHEET NUMBER MS3102 20 AUG 92 REV E SUPERSEDING MS3102 0 31 AUG 90 AMSC- N/A FSC 5935
DISTRIBUTION STATEMENT A. Approved for public release; distribution is unlimited.		Page 6 of 7

THIS SPECIFICATION IS APPROVED FOR USE BY ALL DEPARTMENTS AND AGENCIES OF THE DEPARTMENT OF DEFENSE.



STYLE P (PIN INSERT)



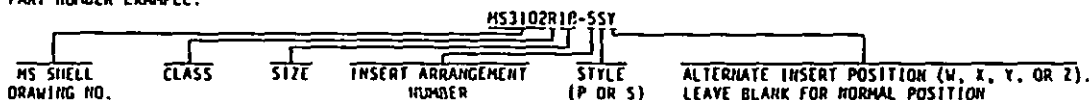
STYLE S (SOCKET INSERT)
CLASS R - ENVIRONMENT RESISTANT

[illegible]

⑤ NOTES:

- (a) CLASS R IS INACTIVE FOR NEW DESIGN AFTER 1 JAN 1991. FOR NEW DESIGN USE MS34524.
FOR SHIPBOARD JACKETED CABLES USE MS3402.
- (b) FOR SHELL SIZE 36 AND 40 A TOLERANCE IS .000 - .250.
- (c) CONNECTORS MS3102R REPLACE AND ARE INTERCHANGEABLE WITH CORRESPONDING MS3102E AND MS3102E CONNECTORS.

PART NUMBER EXAMPLE:



DIMENSIONS IN INCHES. UNLESS OTHERWISE SPECIFIED, TOLERANCES: DECIMALS $\pm .016$. THIS SPECIFICATION SHEET TAKES PRECEDENCE OVER DOCUMENTS REFERENCED HEREIN. REFERENCED DOCUMENTS SHALL BE OF THE ISSUE IN EFFECT ON DATE OF INVITATIONS FOR BID.

PREPARING ACTIVITY: NAVY-AS CUSTODIANS: ARMY-CR NAVY-AS AIR FORCE-BS NASA-NA REVIEW: ARMY-MI, BY ME, NAVY-SH, EC, AF-99 USER: ARMY-AT, NAVY-OS, MC, CG PROJECT NUMBER: 5935-3889	MILITARY SPECIFICATION SHEET TITLE CONNECTOR, RECEPTACLE, ELECTRIC, BOX MOUNTING, SOLDER CONTACTS, AN TYPE	SPECIFICATION SHEET NUMBER 20 AUG 92 MS3102 . REV E SUPERSEDING MS3102 D 31 AUG 90 ANSC- N/A FSC 5935
---	---	--

DISTRIBUTION STATEMENT-A. Approved for public release; distribution is unlimited.

Page 7 of 7