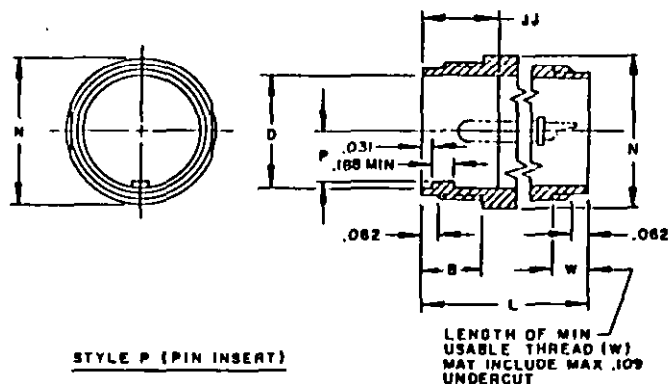
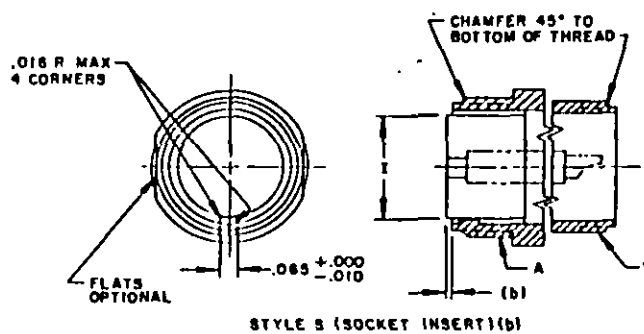


THE REQUIREMENTS FOR ACQUIRING THE PRODUCT(S) DESCRIBED HEREIN SHALL CONSIST OF THIS SPECIFICATION SHEET AND THE ISSUE OF THE FOLLOWING SPECIFICATION LISTED IN THAT ISSUE OF THE DODDS SPECIFIED IN THE SOLICITATION: MIL-C-5015

THIS SPECIFICATION IS APPROVED FOR USE
BY ALL DEPARTMENTS AND AGENCIES OF THE
DEPARTMENT OF DEFENSE.



CLASS A - SOLID SHELL
CLASS B - SPLIT SHELL

SIZE	A COUPLING THREAD	B MIN USABLE THREAD	D +.015 -.000 ID	F MAX INSERT DIA	(C) JJ +.031 -.000 INSERT LOCATION	L MAX OVERALL LENGTH	(E) R MAX OVERALL OD	P +.015 -.000 KEY HEIGHT	Y THREAD	W MIN USABLE THREAD	FOR INSERT ARRANGEMENT, SEE DRAWING
85	1/2-28	.375	.370	.250	.562	1.469	.844	.130	1/2-28	.375	MIL-STD- 1651
105	5/8-24		.440	.320		1.531	.969	.165			
105L									3/8-24		
125	3/4-20		.557	.440		1.688	1.062	.224			
12		.625		.750	2.062						
145	7/8-20	.375	.682	.525	.562	1.688		3/4-20			
14		.625		.750	2.062	1.156	.263				
165	1 -20	.375	.807	.650	.562	1.688		7/8-20			
16						1.750	.325				
18	1-1/8-18	.625	.932	.770	.750	2.062	1.344	.385	1 -20		
20	1-1/4-18		1.058	.925			1.469	.463	1-3/16-18		
22	1-3/8-18		1.182	1.020		2.108	1.594	.510			
24	1-1/2-18		1.307	1.145			1.719	.573	1-7/16-18		
26	1-3/4-18		1.526	1.365			1.969	.683			
32	2 -18		1.776	1.615		2.438	2.219	.808	1-3/4-18	.438	
36	2-1/4-16		1.995	1.830			2.469	.915	2 -18	.500	
40	2-1/2-16		2.245	2.045			2.719	1.023	2-1/4-16		
44	2-3/4-16		2.495	2.300			2.969	1.150	2-1/2-16	.562	
48	3 -16		2.745	2.550		2.562	3.219	1.275	3 -16	.625	

PREPARING ACTIVITY: NAVY-AS
CUSTODIANS: ARMY-CR NAVY-AS
AIR FORCE-BS

REVIEW: ARMY-MI, AV, ME, NAVY-SH, EC, AF-99
USER: ARMY-AT, NAVY-OS, MC, CG
PROJECT NUMBER. 5935-3745-02

MILITARY SPECIFICATION SHEET

TITLE CONNECTOR, PLUG, ELECTRIC,
CABLE CONNECTING, SOLDER
CONTACTS, AN TYPE

SPECIFICATION SHEET NUMBER

MS3101C 31 AUG 1990

**SUPERSEDING
AN3101**

ANSC-	N/A
-------	-----

FSC 5935

DISTRIBUTION STATEMENT A. Approved for public release; distribution is unlimited

Page 1 of 8

© NOTES:

- (a) SIZES BS THRU 40 OF CLASSES A AND B ARE CANCELLED APRON 1 JAN 1991. FOR REPLACEMENT PURPOSES, USE MS3101F OR MS3101R. MANUFACTURERS MAY CONTINUE TO SUPPLY THESE SIZES OF CLASSES A AND B UNTIL 1 JAN 1992 OR EXHAUST THEIR INVENTORIES, WHICHEVER COMES FIRST. FOR NEW DESIGN USE MS3451W WITH THE APPROPRIATE MS5049/31 BACKSHELL.
- (b) SIZES 44 AND 48 OF CLASSES A AND B ARE INACTIVE FOR NEW DESIGN.
- (c) WHERE RESILIENT INSERTS ARE USED, JJ MAY BE .109 LESS THAN THAT INDICATED.
- (d) SOCKET INSERT OF HARD MATERIAL SHALL EXTEND .016 MAXIMUM BEYOND OR .002 MAXIMUM BELOW SHELL. SOCKET INSERT OF RESILIENT MATERIAL SHALL EXTEND .047 + .000-.047 BEYOND SHELL AS SHOWN.
- (e) DIMENSION W SHALL BE NOT LESS THAN THREAD DIAMETER Y.
- (f) CONNECTORS MS3101A (OR B) REPLACE AND ARE INTERCHANGEABLE WITH CORRESPONDING AN3101A (OR B) CONNECTORS.

EXAMPLE OF PART NUMBER:



DIMENSIONS IN INCHES. UNLESS OTHERWISE SPECIFIED, TOLERANCES: DECIMALS $\pm .016$.
THIS STANDARD TAKES PRECEDENCE OVER DOCUMENTS REFERENCED HEREIN.
REFERENCED DOCUMENTS SHALL BE OF THE ISSUE IN EFFECT ON DATE OF INVITATIONS FOR BID.

CERTAIN PROVISIONS OF THIS SPECIFICATION ARE THE SUBJECT OF INTERNATIONAL STANDARDIZATION AGREEMENTS ASCC 12/14 AND NEPR 28. WHEN AMENDMENT, REVISION OR CANCELLATION OF THIS SPECIFICATION IS PROPOSED WHICH WILL MODIFY THE INTERNATIONAL AGREEMENT CONCERNED, THE PREPARING ACTIVITY WILL TAKE APPROPRIATE ACTION THROUGH INTERNATIONAL STANDARDIZATION CHANNELS INCLUDING DEPARTMENTAL STANDARDIZATION OFFICES TO CHANGE THE AGREEMENT OR MAKE OTHER APPROPRIATE ACCOMMODATIONS.

PREPARING ACTIVITY: NAVY-AS
CUSTODIANS: ARMY-CR NAVY-AS
AIR FORCE-B5

REVIEW: ARMY-MI, AV, ME, NAVY-SH, EC, AF-99
USER: ARMY-AT, NAVY-DS, MC, CG
PROJECT NUMBER: 5935-3745-02

MILITARY SPECIFICATION SHEET
TITLE CONNECTOR, PLUG, ELECTRIC,
CABLE CONNECTING, SOLDER
CONTACTS, AN TYPE

SPECIFICATION SHEET NUMBER
MS3101C 31 AUG 1990

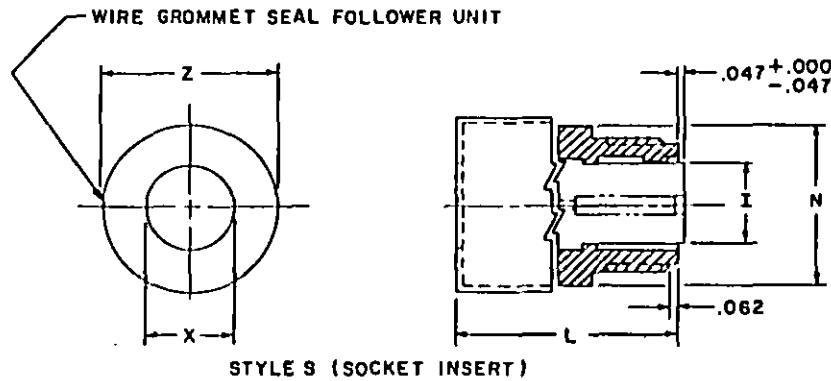
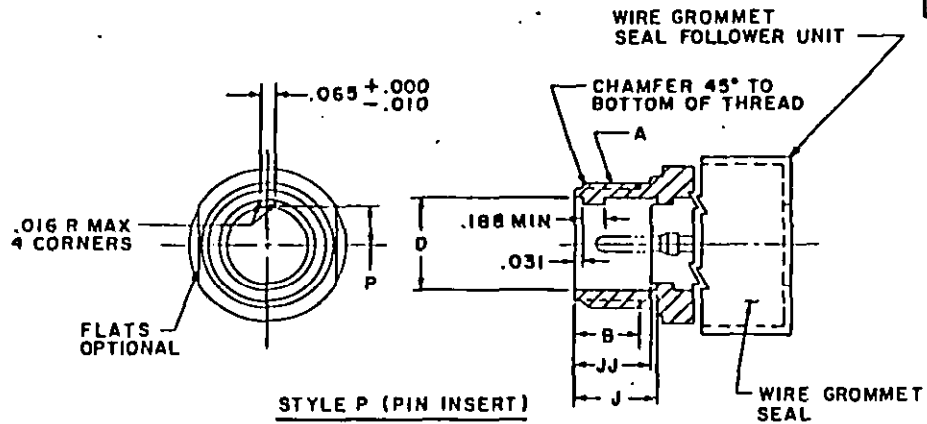
SUPERSEDING
AN3101

ANSC- N/A FSC 5935

DISTRIBUTION STATEMENT A. Approved for public release; distribution is unlimited.

Page 2 of 8

THE REQUIREMENTS FOR ACQUIRING THE PRODUCT(S) DESCRIBED HEREIN SHALL CONSIST OF THIS SPECIFICATION SHEET AND THE ISSUE OF THE FOLLOWING SPECIFICATION LISTED IN THAT ISSUE OF THE DODISS SPECIFIED IN THE SOLICITATION MIL-C-5015



CLASS R - ENVIRONMENT RESISTANT

SIZE	A COUPLING THREAD	B PIN USABLE THREAD	D +.015 -.000 ID	I MAX INSERT DIA	J +.031 -.000 INT SHELL SOLDER	JJ +.031 INSERT LOCATION	(L) L PIN OVERALL LENGTH	R MAX OD	P +.015 -.000 KEY HEIGHT	E CABLE CLEARANCE MIN	F MAX ACROSS WIT	FOR INSERT ARRANGEMENT SEE
85	1/2-28		.370	.250				.844	.130			
105	5/8-24	.375	.448	.320	.562	.484	1.838	.969	.165	.172	1.046	
125	3/4-20		.557	.448				1.067	.224	.281	1.125	
12		.625			.750	.672	2.181					
145	7/8-20	.375	.682	.525	.562	.484	1.838	1.156	.263	.406	1.343	
14		.625			.750	.672	2.181					
165		.375			.562	.484	1.838					
16	1 -20		.807	.650			2.181	1.281	.325	.500		
18	1-1/8-18		.932	.770				1.344	.385	.531	1.609	
20	1-1/4-18		1.058	.925				1.500	.463	.656		
22	1-3/8-18		1.182	1.020			2.281	1.625	.510	.750	1.890	
24	1-1/2-18	.625	1.307	1.165	.750	.672		1.750	.573	.781	2.170	
26	1-3/4-18		1.526	1.365				2.000	.683	.922		
32	2 -18		1.776	1.615				2.250	.878	1.156	2.656	
36	2-1/4-18		1.995	1.830			2.372	2.500	.915	1.250	2.922	
40	2-1/2-18		2.245	2.085				2.750	1.023	1.562	3.348	

THIS SPECIFICATION IS APPROVED FOR USE
BY ALL DEPARTMENTS AND AGENCIES OF THE
DEPARTMENT OF DEFENSE.

PREPARING ACTIVITY: NAVY-AS
CUSTODIANS: ARMY-CR NAVY-AS
AIR FORCE-85
REVIEW: ARMY-MI, AV, ME, NAVY-SH, EC, AF-99
USER: ARMY-AF, NAVY-OS, MC, CG
PROJECT NUMBER: 5935-3745-02

MILITARY SPECIFICATION SHEET
TITLE CONNECTOR, PLUG, ELECTRIC,
CABLE CONNECTING, SOLDER
CONTACTS, AN TYPE

SPECIFICATION SHEET NUMBER
MS3101C 31 AUG 1990
SUPERSEDING
AN3101
AMSC- N/A FSC 5935

DISTRIBUTION STATEMENT A Approved for public release; distribution is unlimited.

Page 3 of 8

NOTES:

- (c) (a) CLASS R IS INACTIVE FOR NEW DESIGN AFTER 1 JAN 1991. FOR NEW DESIGN USE MS3451W WITH THE APPROPRIATE M85049/31 BACKSHELL.
 (b) ADD .375 FOR SIZE "D" CONTACTS.
 (c) MS3101R CONNECTORS REPLACE AND ARE INTERCHANGEABLE WITH CORRESPONDING MS3101E AND AN3101E CONNECTORS WITHOUT SADDLE TYPE CABLE CLAMP.

EXAMPLE OF PART NUMBER:



DIMENSIONS IN INCHES. UNLESS OTHERWISE SPECIFIED, TOLERANCES: DECIMALS $\pm .016$.
 THIS STANDARD TAKES PRECEDENCE OVER DOCUMENTS REFERENCED HEREIN.
 REFERENCED DOCUMENTS SHALL BE OF THE ISSUE IN EFFECT ON DATE OF INVITATIONS FOR BID.

PREPARING ACTIVITY: NAVY-AS
 CUSTODIANS: ARMY-CR NAVY-AS
 AIR FORCE-85
 REVIEW: ARMY-M1, AV, ME, NAVY-SH, EC, AF-99
 USER: ARMY-AT, NAVY-OS, MC, CG
 PROJECT NUMBER: 5935-3745-02

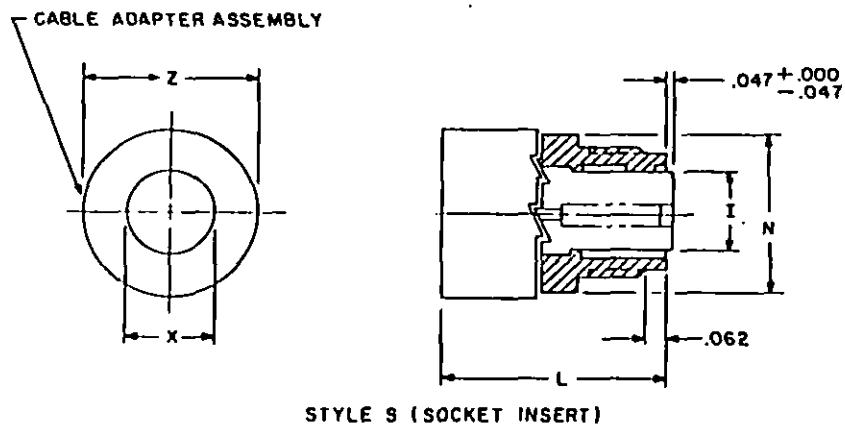
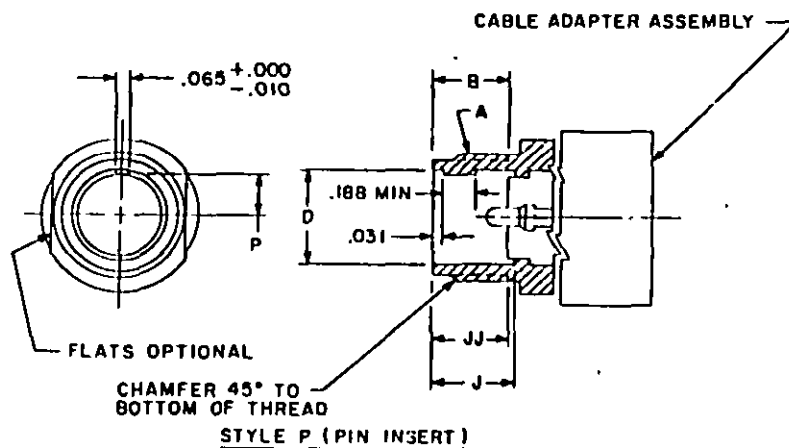
MILITARY SPECIFICATION SHEET
 TITLE CONNECTOR, PLUG, ELECTRIC,
 CABLE CONNECTING, SOLDER
 CONTACTS, AN TYPE

SPECIFICATION SHEET NUMBER
MS3101C 31 AUG 1990
 SUPERSEDING
 AN3101
 AMSC- N/A FSC 5935

DISTRIBUTION STATEMENT A. Approved for public release; distribution is unlimited.

Page 4 of 8

THE REQUIREMENTS FOR ACQUIRING THE PRODUCT(S) DESCRIBED HEREIN SHALL CONSIST OF THIS SPECIFICATION SHEET AND THE ISSUE OF THE FOLLOWING SPECIFICATION LISTED IN THAT ISSUE OF THE DODISS SPECIFIED IN THE SOLICITATION: MIL - C - 5015



CLASS E - ENVIRONMENT RESISTANT

SIZE	A COUPLING THREAD	B PIN USABLE THREAD	D +.015 -.000 I.D.	E MAX INSERT DIA	J +.031 -.000 INT SHELL SHLDN	JJ +.031 INSERT LOCATION	(A) L MAX OVERALL LENGTH	H MAX O.D.	P +.015 -.000 KEY HEIGHT	NR MAX CLOSED	S MIN CABLE CLEARANCE	Z MAX ACROSS WIRE GROUP SET SEAL	FOR INSERT ARRANGEMENT SEE
85	1/2-20		.170	.250				.844	.130				
105	5/8-24	.375	.448	.320	.562	.484	2.250	.969	.185		.172	1.046	
105L										.200			
125	3/4-20		.557	.448				1.062	.224		.281	1.125	
12		.625			.750	.672	2.625						
145	7/8-20	.375	.682	.525	.562	.484	2.250	1.156	.263	.312	.406	1.343	
14		.625			.750	.672	2.625						
165	1 -20	.375	.807	.650	.562	.484	2.250	1.281	.325	.380	.500	1.484	
16							2.625						
18	1-1/8-28		.932	.770				2.688	1.344	.385	.422	1.609	
20	1-1/4-18		1.058	.925				2.750	1.500	.463	.531	1.890	
22	1-3/8-18	.625	1.182	1.020	.750	.672		1.625	.510		.740		
24	1-1/2-18		1.307	1.145				2.969	1.750	.573	.781	2.170	
26	1-3/4-18		1.526	1.385				3.031	2.000	.683	.922		
32	2 -18		1.775	1.615				2.750	.808	.790	1.156	2.656	
36	2-1/4-16		1.995	1.830				3.281	2.500	.915	1.250	2.922	
40	2-1/2-16		2.245	2.045				3.500	2.750	1.023	1.562	3.531	

PREPARING ACTIVITY: NAVY-AS
CUSTODIANS: ARMY-CR NAVY-AS
AIR FORCE-85

REVIEW: ARMY-MI, AV, ME, NAVY-SM, EC, AF-99
USER: ARMY-AT, NAVY-OS, MC, CO
PROJECT NUMBER: 5935-3745-02

MILITARY SPECIFICATION SHEET
TITLE CONNECTOR, PLUG, ELECTRIC,
CABLE CONNECTING, SOLDER
CONTACTS, AN TYPE

SPECIFICATION SHEET NUMBER
MS3101C 31 AUG 1990

SUPERSEDING
AN3101

AMSC- N/A

FSC 5935

DISTRIBUTION STATEMENT A. Approved for public release; distribution is unlimited.

Page 5 of 8

DD FORM 672 MAY 1988

PREVIOUS EDITIONS OF THIS FORM ARE OBSOLETE

THIS SPECIFICATION IS APPROVED FOR USE
BY ALL DEPARTMENTS AND AGENCIES OF THE
DEPARTMENT OF DEFENSE.

NOTES:

- (c) (a) CLASS E IS CANCELLED AFTER 1 JAN 1991. USE MS3101F AS A REPLACEMENT FOR MS3101E WITH SADDLE TYPE CLAMP AND MS3101R FOR MS3101E WITHOUT SADDLE TYPE CLAMP. MANUFACTURERS MAY CONTINUE TO SUPPLY CLASS E UNTIL 1 JAN 1992 OR EXHAUST THEIR INVENTORIES, WHICHEVER COMES FIRST. FOR NEW DESIGN USE MS3461W WITH THE APPROPRIATE M85049/31 BACKSHELL.
- (b) ADD .375 FOR SIZE "D" CONTACTS.
- (c) MS3101E CONNECTORS REPLACE AND ARE INTERCHANGEABLE WITH CORRESPONDING AN3101E CONNECTORS.

EXAMPLE OF PART NUMBER:



DIMENSIONS IN INCHES. UNLESS OTHERWISE SPECIFIED, TOLERANCES: DECIMALS $\pm .016$.
THIS STANDARD TAKES PRECEDENCE OVER DOCUMENTS REFERENCED HEREIN.
REFERENCED DOCUMENTS SHALL BE OF THE ISSUE IN EFFECT ON DATE OF INVITATIONS FOR BIDS.

PREPARING ACTIVITY: NAVY-AS
CUSTODIANS: ARMY-CR NAVY-AS
AIR FORCE-05
REVIEW: ARMY-M1, AV, ME, NAVY-SH, EC, AF-99
USER: ARMY-AT, NAVY-OS, MC, CG
PROJECT NUMBER: 5935-3745-02

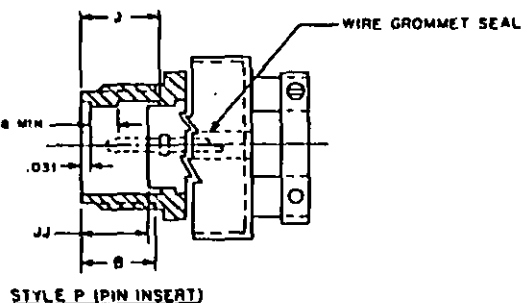
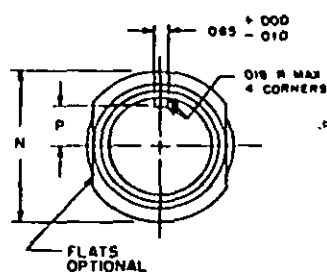
MILITARY SPECIFICATION SHEET
TITLE CONNECTOR, PLUG, ELECTRIC,
CABLE CONNECTING, SOLDER
CONTACTS, AN TYPE

SPECIFICATION SHEET NUMBER
MS3101C 31 AUG 1990
SUPERSEDING
AN3101
AMSC- N/A FSC 5935

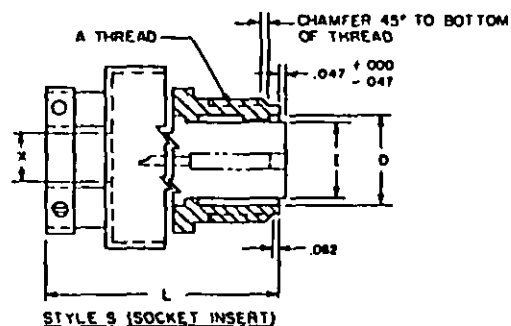
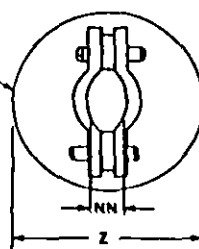
DISTRIBUTION STATEMENT A. Approved for public release; distribution is unlimited.

Page 6 of 8

THE REQUIREMENTS FOR ACQUIRING THE PRODUCT(S) DESCRIBED HEREIN SHALL CONSIST OF THIS SPECIFICATION SHEET AND THE ISSUE OF THE FOLLOWING SPECIFICATION LISTED IN THAT ISSUE OF THE DODISS SPECIFIED IN THE SOLICITATION: MIL-C-5015



SADDLE TYPE
CABLE CLAMP



CLASS F - ENVIRONMENT RESISTANT

SIZE	A COUPLING THREAD	B MIN USABLE THREAD	D +.015 -.000 F.O.	I MAX INSERT DIA	J +.031 -.000 INT SHELL SHLD	JJ +.031 INSERT LOCATION	(A) & MAX OVERALL LENGTH	H MAX O.D.	P +.015 -.000 KEY HEIGHT	NN MAX CLOSED	T MIN CABLE CLEARANCE	Z MAX ACROSS WIRE GROMMET SEAL	FOR INSERT ARRANGEMENT SEE
85	1/2-28		.170	.250				.844	.150				
105	5/8-24	.375	.448	.320	.562	.484	2.250	.969	.165		.172	1.046	
105L										.700			
125	3/4-20		.557	.448				1.062	.224		.281	1.125	
12		.625			.750	.672	2.625						
145		.375	.682	.525	.562	.484	2.250	1.156	.763	.312	.406	1.343	
14	7/8-20	.625			.750	.672	2.625						
165		.375	.807	.650	.562	.484	2.250	1.281	.325	.380	.500	1.484	
16							2.625						
18	1-1/8-20		.932	.770			2.688	1.344	.385	.422	.531	1.609	
20	1-1/4-18		1.058	.925			2.750	1.500	.463	.531	.656	1.890	
22	1-3/8-18	.625	1.182	1.020	.750	.672		1.625	.510		.740		
24	1-1/2-18		1.307	1.145			2.969	1.750	.573	.594	.781	2.170	
28	1-3/4-18		1.526	1.365			3.031	2.000	.683		.922		
32	2-18		1.776	1.615				2.250	.808	.780	1.156	2.656	
36	2-1/4-16		1.995	1.830				3.281	2.500	.915	1.250	2.922	
40	2-1/2-16		2.245	2.085			3.500	2.750	1.023	1.100	1.562	3.531	

THIS SPECIFICATION IS APPROVED FOR USE BY ALL DEPARTMENTS AND AGENCIES OF THE DEPARTMENT OF DEFENSE.

PREPARING ACTIVITY: NAVY-A5
CUSTODIANS: ARMY-CR NAVY-A5
AIR FORCE-85

REVIEW: ARMY-M1, AV, ME, NAVY-SH, EC, AF-99
USER: ARMY-AT, NAVY-OS, MC, CG
PROJECT NUMBER: 5935-3745-02

MILITARY SPECIFICATION SHEET
TITLE CONNECTOR, PLUG, ELECTRIC,
CABLE CONNECTING, SOLDER
CONTACTS, AN TYPE

SPECIFICATION SHEET NUMBER
MS3101C 31 AUG 1990

SUPERSEDING
AN3101

AMSC- N/A FSC 5935

DISTRIBUTION STATEMENT A Approved for public release; distribution is unlimited

Page 7 of 8

NOTES:

- (c) (a) CLASS F IS INACTIVE FOR NEW DESIGN AFTER 1 JAN 1992. FOR NEW DESIGN USE MS3451W WITH APPROPRIATE M85049/52 BACKSHELL.
 (b) ADD .375 FOR SIZE "0" CONTACTS.
 (c) MS3101F CONNECTORS REPLACE AND ARE INTERCHANGEABLE WITH CORRESPONDING MS3101E AND AN3101E CONNECTORS WITH SADDLE CLAMPS.

EXAMPLE OF PART NUMBER:



DIMENSIONS IN INCHES. UNLESS OTHERWISE SPECIFIED, TOLERANCES: DECIMALS $\pm .016$.
 THIS STANDARD TAKES PRECEDENCE OVER DOCUMENTS REFERENCED HEREIN.
 REFERENCED DOCUMENTS SHALL BE OF THE ISSUE IN EFFECT ON DATE OF INVITATIONS FOR BID.

PREPARING ACTIVITY: NAVY-A3
 CUSTODIANS: ARMY-CR NAVY-A3
 AIR FORCE-B5

REVIEW: ARMY-M1, AV, ME, NAVY-SH, EC, AF-99
 USER: ARMY-AT, NAVY-OS, MC, CG
 PROJECT NUMBER: 5935-3745-02

MILITARY SPECIFICATION SHEET
 TITLE CONNECTOR, PLUG, ELECTRIC,
 CABLE CONNECTING, SOLDER
 CONTACTS, AN TYPE

SPECIFICATION SHEET NUMBER
MS3101C 31 AUG 1990

SUPERSEDING
AN3101

AMSC- N/A FSC 5935

DISTRIBUTION STATEMENT A. Approved for public release; distribution is unlimited.

Page 8 of 8