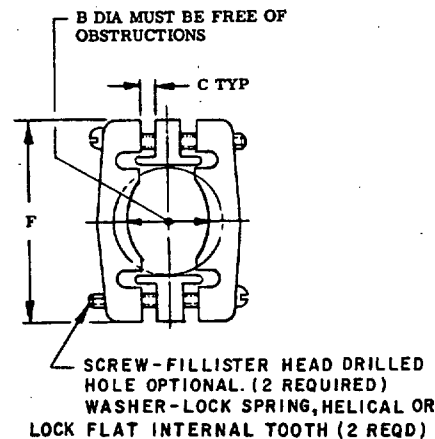
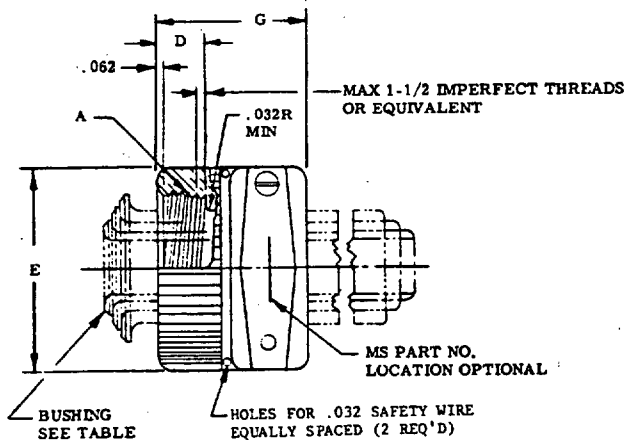


User activities: AT, AV, ME
Navy - MC, SH, OS
Air Force -

Review activities: MU, MI
Navy - EC, OS
Air Force -

This military standard is approved for use by all Departments and Agencies of the Department of Defense. Selection for all new engineering and design applications and for repetitive use shall be made from this document when applicable.

FED. SUP CLASS
5935



TYPE A - CABLE CLAMP, STRAIN RELIEF

| DASH NO. (a) | CONNECTOR SHELL SIZE (REF) (b) | A THREAD | B MAX | C | D | E .031 DIA | F .031 | G .031 | BUSHING (REF) (c) |
|-----------------|-----------------------------------|------------------|----------|------|------|------------------|-----------|-----------|-------------------------|
| -3A | 8S AND 10S | .500-28 UNEF-2B | .250 | .047 | .406 | .688 | .812 | .812 | MS3420-3 |
| -4A | 10SL, 12S AND 12 | .625-24 UNEF-2B | .312 | .062 | | .812 | .875 | | MS3420-4 |
| -6A | 14S AND 14 | .750-20 UNEF-2B | .438 | .078 | | .969 | 1.062 | .875 | MS3420-6 |
| -8A | 16S AND 16 | .875-20 UNEF-2B | .562 | .109 | | 1.094 | 1.156 | | MS3420-8 |
| -10A | 18 | 1.000-20 UNEF-2B | .625 | .125 | | 1.188 | 1.250 | .938 | MS3420-10 |
| -12A | 20 AND 22 | 1.188-18 UNEF-2B | .750 | .156 | | 1.375 | 1.469 | | MS3420-12 |
| -16A | 24 AND 28 | 1.438-18 UNEF-2B | .938 | .188 | .531 | 1.656 | 1.688 | 1.031 | MS3420-16 |
| -20A | 32 | 1.750-18 UNS-2B | 1.250 | .250 | | 2.031 | 2.031 | 1.094 | MS3420-20 |
| -24A | 36 | 2.000-18 UNS-2B | 1.375 | .297 | | 2.219 | 2.281 | 1.156 | MS3420-24 |
| -28A | 40 | 2.250-16 UN-2B | 1.625 | .328 | | 2.500 | 2.688 | 1.688 | MS3420-28 |
| -32A | 44 | 2.500-16 UN-2B | 1.875 | .375 | | 2.781 | 2.938 | 1.750 | MS3420-32 |
| -40A | 48 | 3.000-16 UN-2B | 2.375 | .453 | | 3.281 | 3.500 | | MS3420-40 |

- (a) PART NUMBERS MS3057-3A THROUGH -40A ARE INTERCHANGEABLE WITH PART NUMBERS AN3057-3A THROUGH 40A.
(b) CLAMP MATES WITH CONNECTOR SHELL SIZE LISTED IN THIS COLUMN.
(c) BUSHINGS FOR REFERENCE ONLY AND NOT SUPPLIED AS PART OF CLAMP.
FOR ADDITIONAL CLOSE DOWN OF THE B DIMENSION, BUSHINGS MS3420-3 THROUGH MS3420-40 MAY BE USED.
ONE BUSHING AS REQUIRED FOR MS3057-3A THROUGH MS3057-12A, CORRESPONDING TO MS3420-3 THROUGH MS3420-12.
TWO BUSHINGS AS REQUIRED FOR MS3057-16A THROUGH MS3057-24A, ONE EACH CORRESPONDING TO MS3420-16 THROUGH MS3420-24, AND MS3420-12 THROUGH MS3420-20. (EXAMPLES: MS3057-16A REQUIRES ONE MS3420-16 AND ONE MS3420-12.)
THREE BUSHINGS AS REQUIRED FOR MS3057-28A THROUGH MS3057-40A, ONE EACH CORRESPONDING TO MS3420-28 THROUGH MS3420-40, AND MS3420-24 THROUGH MS3420-32, AND MS3420-20 THROUGH MS3420-28. (EXAMPLES: MS3057-40A REQUIRES ONE MS3420-40, ONE MS3420-32, AND ONE MS3420-28.)

NOTES:

- DIMENSIONS IN INCHES. UNLESS OTHERWISE SPECIFIED, TOLERANCES: DECIMALS $\pm .016$. ANGLES $\pm 2^\circ$.
- DIMENSIONS AND TOLERANCING IN ACCORDANCE WITH ANSI Y14.5-1973.
- MATERIAL: ALUMINUM ALLOY, QQ-A-591, ALLOY NO. 13.
- FINISH: IN ACCORDANCE WITH MIL-C-5015.
- THREADS IN ACCORDANCE WITH MIL-S-7742.
- REMOVE ALL BURRS AND SHARP EDGES.

FOR DESIGN FEATURE PURPOSES, THIS STANDARD TAKES PRECEDENCE OVER PROCUREMENT DOCUMENTS REFERENCED HEREIN.
REFERENCED DOCUMENTS SHALL BE OF THE ISSUE IN EFFECT ON DATE OF INVITATIONS FOR BID.

INACTIVE FOR DESIGN AFTER 1 JULY 1982. DOCUMENT WILL BE CANCELLED AFTER 1 JULY 1984, USE MIL-C-85049/1, /2, /41, /42

Ⓔ DENOTES CHANGES

| | | | |
|---|------------------------|-------------------------------------|-------------------|
| P.A Navy - AS | International interest | TITLE | MILITARY STANDARD |
| Other Cust Army - EL USAF - 85 | | CLAMPS, CABLE, ELECTRICAL CONNECTOR | MS 3057 |
| Procurement Specification MIL-C-5015 | SUPERSEDES: | AN3057 | PAGE 1 OF 8 |

DD FORM 1 MAY 73 672 (Coordinated) PREVIOUS EDITIONS OF THIS FORM ARE OBSOLETE

PROJECT NO. 5935-3297-01

APPROVED 17 Dec 58
REVISED 10 Jan 63 27 Feb 70 5 Nov 70 13 Oct 76 10 May 1982

This military standard is approved for use by all Departments and Agencies of the Department of Defense. Selection for all new engineering and design applications and for repetitive use shall be made from this document when applicable.

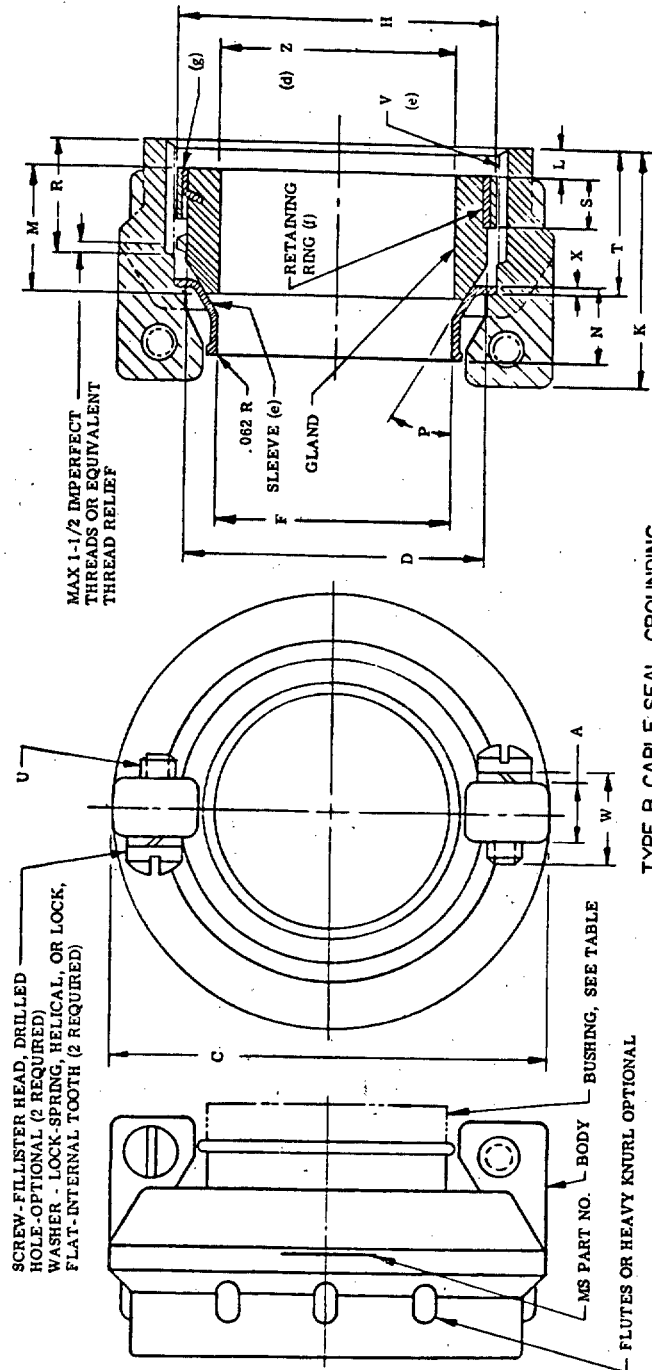
Review activities:

Army - MU, MI
Navy - EC, OS
Air Force -

User activities: Army - AT, AV, ME
Navy - MC, SH, OS
Air Force -

| | | | |
|---|------------------------|-------------------------------------|-------------------|
| P.A. NAVY - AS | International interest | TITLE | MILITARY STANDARD |
| Other Cust Army - EL USAF - 85 | | CLAMPS, CABLE, ELECTRICAL CONNECTOR | MS 3057 |
| Procurement Specification MIL-C-5015 | | SUPERSEDES: AN3057 | PAGE 2 OF 8 |

DD FORM 1 MAY 73 672 (Coordinated) PREVIOUS EDITIONS OF THIS FORM ARE OBSOLETE.

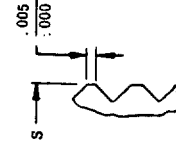


TYPE B CABLE SEAL, GROUNDING

- (d) FOR ADDITIONAL CLOSEDOWN OF THE Z DIMENSION, BUSHINGS MS3420-3A THROUGH MS3420-40A MAY BE USED. DIAMETER Z SHALL BE FREE OF OBSTRUCTIONS.
- (e) APPLY LUBRICANT, VV-P-236 TO THREADS AND SURFACES OF SLEEVE.
- (f) RETAINING RING TO BE BONDED IN RUBBER GLAND.
- (g) SERRATIONS AT BASE OF RETAINING RING MAY BE COVERED WITH A MAXIMUM OF .013 RUBBER FOR SIZES 3B THROUGH 10B, IF COVERED, THE RUBBER SHALL BE MOLDED TO THE CONTOUR OF THE SERRATIONS.

NOTES:

- DIMENSIONS IN INCHES. UNLESS OTHERWISE SPECIFIED, TOLERANCES: DECIMALS $\pm .016$, ANGLES $\pm 2^\circ$.
- DIMENSIONS AND TOLERANCING IN ACCORDANCE WITH ANSI Y14.5-1973. SEE SHEET 3 FOR TABULATED DIMENSIONS.
- MATERIAL: BODY: ALUMINUM ALLOY, QQ-A-225/5, TEMPER T4; QQ-A-601 OR QQ-A-591, ALLOY NO. 13, 218, 380, OR SC114A. SLEEVE: ALUMINUM, AMS4025 OR QQ-A-225. GLAND, RUBBER, AMS3209, DUROMETER "A" 70 ± 5 .
- FINISH: BODY, SCREWS AND WASHERS - CADMIUM PLATE, SPECIFICATION QQ-P-416, TYPE II, CLASS 3, COLOR, DULL OLIVE DRAB, ELECTRICALLY CONDUCTIVE.
- SLEEVE - SPECIFICATION MIL-C-5541. THE PORTION OF THE SLEEVE IN CONTACT WITH THE BODY SHALL BE COATED WITH POLYTETRAFLUOROETHYLENE RESIN FOR SIZES 3B THRU 10B.
- THREADS IN ACCORDANCE WITH MIL-S-7742.
- REMOVE ALL BURRS AND SHARP EDGES.



(k) SIDE VIEW OF SERRATIONS ON RETAINING RING (20 SERRATIONS PER INCH)

FED. SUP CLASS
5935

APPROVED 17 Dec 58 REVISED (E) FOR CHANGES SEE SHEET 1

User activities: Army - AT, AV, ME
Navy - MC, SH, OS
Air Force -

Review activities: Army - MU, MI
Navy - EC, OS
Air Force -

This military standard is approved for use by all Departments and Agencies of the Department of Defense. Selection for all new engineering and design applications and for repetitive use shall be made from this document when applicable.

| | | | |
|---|------------------------|--|-----------------------------|
| P.A. Navy - AS | International Interest | TITLE CLAMPS, CABLE, ELECTRICAL CONNECTOR | MILITARY STANDARD MS3057 |
| Other Cust Army - EL USAF - 85 | | | |
| Procurement Specification MIL-C-5015 | SUPERSEDES: AN3057 | PAGE 3 | OF 8 |

DD FORM 1 MAY 73 672 (Coordinated) PREVIOUS EDITIONS OF THIS FORM ARE OBSOLETE.

TYPE B CABLE SEAL, GROUNDING

| DASH NO. | CONNECTOR SHELL SIZE (REF) | A +.031 -.016 | C MAX | D +.000 -.020 DIA GLAND | F +.020 -.000 DIA | H +.000 -.020 DIA | K MAX | L MIN | M ±.031 | N | P ±2° | R MIN |
|----------|----------------------------|---------------------|------------------|-------------------------------------|----------------------------|----------------------------|------------------|----------|------------|------|----------|----------|
| (h) | (i) | | | | | | | | | | | |
| -3B | 8S AND 10S | | .812 | .389 | .231 | .441 | | | | | 20° | |
| -4B | 10SL, 12S AND 12 | | .937 | .510 | .315 | .560 | 1.031 | | .473 | .254 | | |
| -6B | 14S AND 14 | .188 | 1.062 | .627 | .440 | .676 | | | | | | |
| -8B | 16S AND 16 | | 1.188 | .744 | .515 | .800 | | | | | | .531 |
| -10B | 18 | | 1.312 | .870 | .614 | .926 | 1.094 | .156 | .537 | .281 | 30° | |
| -12B | 20 AND 22 | .250 | 1.562 | 1.037 | .738 | 1.107 | | | .625 | .320 | | |
| -16B | 24 AND 28 | | 1.750 | 1.286 | .926 | 1.357 | 1.219 | | .662 | .344 | | .562 |
| -20B | 32 | | 2.250 | 1.590 | 1.200 | 1.670 | 1.344 | | | | | |
| -24B | 36 | .312 | 2.375 | 1.844 | 1.363 | 1.920 | 1.547 | | .940 | .406 | 35° | .781 |
| -28B | 40 | | 2.625 | 2.083 | 1.611 | 2.162 | | | | | | |
| -32B | 44 | | 2.812 | 2.332 | 1.865 | 2.412 | 1.734 | .188 | 1.047 | .500 | | |
| -40B | 48 | .375 | 3.312 | 2.832 | 2.365 | 2.912 | 1.781 | | | | | |
| DASH NO. | T | U THREAD | V THREAD | W MIN | X | Z DIA APPROX (GLAND) | BUSHING (REF) | | | | | |
| (h) | | | | | | FREE CLOSED | | | | | | |
| -3B | | | .500-28 UNEF-2B | | | .219 | MS3420-3A | | | | | |
| -4B | .641 | 6-32UNC-2A | .625-24 UNEF-2B | .281 | .025 ± .010 -.003 | .312 | MS3420-4A | | | | | |
| -6B | | | .750-20 UNEF-2B | | | .438 | MS3420-6A | | | | | |
| -8B | | | .875-20 UNEF-2B | | | .531 | MS3420-8A | | | | | |
| -10B | .672 | | 1.000-20 UNEF-2B | | | .625 | MS3420-10A | | | | | |
| -12B | .719 | 8-32UNC-2A | 1.188-18 UNEF-2B | .344 | .032 ± .012 -.003 | .750 | MS3420-12A | | | | | |
| -16B | .797 | | 1.438-18 UNEF-2B | | | .938 | MS3420-16A | | | | | |
| -20B | | | 1.750-18 UNS-2B | | | 1.250 | MS3420-20A | | | | | |
| -24B | 1.016 | 10-32UNF-2A | 2.000-18 UNS-2B | .406 | .051 ± .005 | 1.375 | MS3420-24A | | | | | |
| -28B | | | 2.250-16 UN-2B | | | 1.625 | MS3420-28A | | | | | |
| -32B | 1.172 | | 2.500-16 UN-2B | | | 1.875 | MS3420-32A | | | | | |
| -40B | 1.234 | | 3.000-16 UN-2B | | .064 ± .005 | 2.375 | MS3420-40A | | | | | |

(h) PART NUMBERS MS3057-3B THROUGH -40B ARE INTERCHANGEABLE WITH PART NUMBERS AN3057-3B THROUGH -40B.

(i) CLAMP MATES WITH CONNECTOR SHELL SIZE LISTED IN THIS COLUMN.

FED. SUP CLASS
5935

This military standard is approved for use by all Departments and Agencies of the Department of Defense. Selection for all new engineering and design applications and for repetitive use shall be made from this document when applicable.

Review activities: Army - MU, MI
Navy - EC, OS
Air Force -

User activities: Army - AT, AV, ME
Navy - MC, SH, OS
Air Force -

| | | | | | | |
|---|--|------------------------|-------------------------------------|--------|-------------------|--|
| P.A. Navy - AS | | International Interest | TITLE | | MILITARY STANDARD | |
| Other Cust Army - EL USAF - 85 | | | CLAMPS, CABLE, ELECTRICAL CONNECTOR | | MS3057 | |
| Procurement Specification MIL-C-5015 | | SUPERSEDES: | | AN3057 | PAGE 4 OF 8 | |

FED. SUP CLASS
5935

TYPE C CABLE SEAL, STRAIN-RELIEF

FOR ADDITIONAL CLOSE DOWN OF THE Z DIMENSION, BUSHINGS MS3420-3A THROUGH MS3420-40A MAY BE USED. DIAMETER Z SHALL BE FREE OF OBSTRUCTIONS.

(k) APPLY LUBRICANT, VV-P-236 TO THREADS AND SURFACES OF SLEEVE.

(l) SERRATIONS AT BASE OF RETAINING RING MAY BE COVERED WITH A MAXIMUM OF .013 RUBBER FOR SIZES 3C THROUGH 10C, IF COVERED, THE RUBBER SHALL BE MOLDED TO THE CONTOUR OF THE SERRATIONS.

(m) RETAINING RING TO BE BONDED IN RUBBER GLAND.

(n) "E" MIN WITH CLAMPING BARS FULLY OPENED SHALL BE NO LESS THAN "B" DIMENSION.

NOTES:

11. DIMENSIONS IN INCHES, UNLESS OTHERWISE SPECIFIED. TOLERANCES: DECIMALS $\pm .016$, ANGLES $\pm 2^\circ$. DIMENSIONS AND TOLERANCING IN ACCORDANCE WITH ANSI Y14.5-1973. SEE SHEET 5 FOR TABULATED DIMENSIONS.

12. MATERIAL: BODY, ALUMINUM ALLOY, QQ-A-225/5, TEMPT4; QQ-A-601 OR QQ-A-591, ALLOY NO. 13.

13. FINISH: BODY, SCREWS AND WASHERS - CADMIUM PLATE, SPECIFICATION QQ-P-416, TYPE II, CLASS 3, COLOR, DULL OLIVE DRAB, ELECTRICALLY CONDUCTIVE.

14. SLEEVE - SPECIFICATION MIL-C-5541. THE PORTION OF THE SLEEVE IN CONTACT WITH THE BODY SHALL BE COATED WITH POLYTETRAFLUOROETHYLENE RESIN FOR SIZES 3C THRU 10C.

15. REMOVE ALL BURRS AND SHARP EDGES.

(l) SIDE VIEW OF SERRATIONS ON RETAINING RING (20 SERRATIONS PER INCH)

User activities: Army - AT, AV, ME
Navy - MC, SH, OS
Air Force -

Review activities: Army - MU, MI
Navy - EC, OS
Air Force -

This military standard is approved for use by all Departments and Agencies of the Department of Defense. Selection for all new engineering and design applications and for repetitive use shall be made from this document when applicable.

| | | | |
|---|------------------------|-------------------------------------|-------------------|
| P.A Navy - AS | International interest | TITLE | MILITARY STANDARD |
| Other Cust Army - EL USAF - 85 | | CLAMPS, CABLE, ELECTRICAL CONNECTOR | MS3057 |
| Procurement Specification MIL-C-5015 | SUPERSEDES: | AN3057 | PAGE 5 OF 8 |

DD FORM 672 (Coordinated) PREVIOUS EDITIONS OF THIS FORM ARE OBSOLETE.

TYPE C CABLE SEAL, STRAIN RELIEF

| DASH NO. | CONNECTOR SHELL SIZE (REF) (c) | A + .031 - .016 | B MIN CABLE CLEAR- ANCE | C MAX DIA | D + .000 - .020 DIA | E MAX CLOSED | F + .020 - .000 DIA | G + .016 - .020 DIA | H + .010 - .020 DIA | J + .020 | K MAX | L MIN | M + .031 | N | P | R MIN |
|----------------------|--------------------------------|-----------------------|-------------------------------------|-----------------|------------------------------|--------------------|------------------------------|------------------------------|------------------------------|-------------|----------|----------|-------------|------|-----|----------|
| -3C 8S AND 10S | | | .239 | .812 | .389 | .217 | .231 | | .441 | | | | | | | |
| -4C 10SL, 12S AND 12 | | | .317 | .937 | .510 | .296 | .315 | | .560 | | | | | | 20° | |
| -6C 14S AND 14 | | .188 | .443 | 1.062 | .627 | .390 | .440 | .125 | .676 | .875 | 1.375 | | .473 | .254 | | |
| -8C 16S AND 16 | | | .551 | 1.188 | .744 | .434 | .515 | | .800 | | | | | | | |
| -10C 18 | | | .630 | 1.312 | .870 | .434 | .614 | | .926 | .927 | | | | | 30° | .531 |
| -12C 20 AND 22 | | .250 | .771 | 1.562 | 1.037 | .596 | .738 | | 1.107 | 1.016 | 1.437 | .156 | | | | |
| -16C 24 AND 28 | | | .959 | 1.750 | 1.266 | | .926 | .156 | 1.357 | 1.037 | 1.562 | | .625 | .320 | | |
| -20C 32 | | | 1.271 | 2.250 | 1.590 | .858 | 1.200 | | 1.670 | 1.167 | 1.812 | | .662 | .344 | | .562 |
| -24C 36 | | .312 | 1.396 | 2.375 | 1.844 | | 1.363 | | 1.920 | | | | | | | |
| -26C 40 | | | 1.646 | 2.625 | 2.083 | 1.107 | 1.611 | .188 | 2.162 | 1.386 | 2.062 | | .940 | .406 | 35° | .781 |
| -32C 44 | | .375 | 1.896 | 2.812 | 2.332 | 1.421 | 1.865 | | 2.412 | 1.480 | 2.188 | .188 | 1.047 | .500 | | |

| DASH NO. | S | T | U THREAD | V THREAD | W MIN | X | Z DIA APPROX (GLAND) | BUSHING (REF) | MAX CABLE DIA |
|----------|------|-------|--------------|------------------|----------|-----------------------|----------------------------|------------------|---------------------|
| -3C | | | | .500-28 UNEF-2B | .469 | | .219 | MS3420-3A | .219 |
| -4C | .200 | .641 | 6-32UNC-2A | .625-24 UNEF-2B | .594 | .025 + .010 - .003 | .312 | MS3420-4A | .312 |
| -6C | | | | .750-20 UNEF-2B | | | .438 | MS3420-6A | .438 |
| -8C | | | | .875-20 UNEF-2B | .719 | | .531 | MS3420-8A | .515 |
| -10C | .218 | .672 | | 1.000-20 UNEF-2B | | .032 + .012 - .003 | .625 | MS3420-10A | .614 |
| -12C | | .719 | 8-32UNC-2A | 1.188-18 UNEF-2B | .844 | | .750 | MS3420-12A | .738 |
| -16C | .273 | | | 1.438-18 UNEF-2B | 1.062 | | .938 | MS3420-16A | .926 |
| -20C | | .797 | | 1.750-18 UNS-2B | 1.187 | | 1.250 | MS3420-20A | 1.200 |
| -24C | .431 | 1.016 | 1/4-20UNC-2A | 2.000-18 UNS-2B | | .051 + .005 | 1.375 | MS3420-24A | 1.363 |
| -28C | | | | 2.250-16 UN-2B | 1.312 | | 1.625 | MS3420-28A | 1.611 |
| -32C | .500 | 1.172 | | 2.500-16 UN-2B | | .064 + .005 | 1.875 | MS3420-32A | 1.865 |

(c) CLAMP MATES WITH CONNECTOR SHELL SIZE LISTED IN THIS COLUMN.

APPROVED 17 Dec 58 REVISED (E) FOR CHANGES SEE SHEET 1

FED. SUP CLASS
5935

FED. SUP CLASS
5935

User activities: Army - AT, AV, ME
Navy - MC, SH, OS
Air Force -

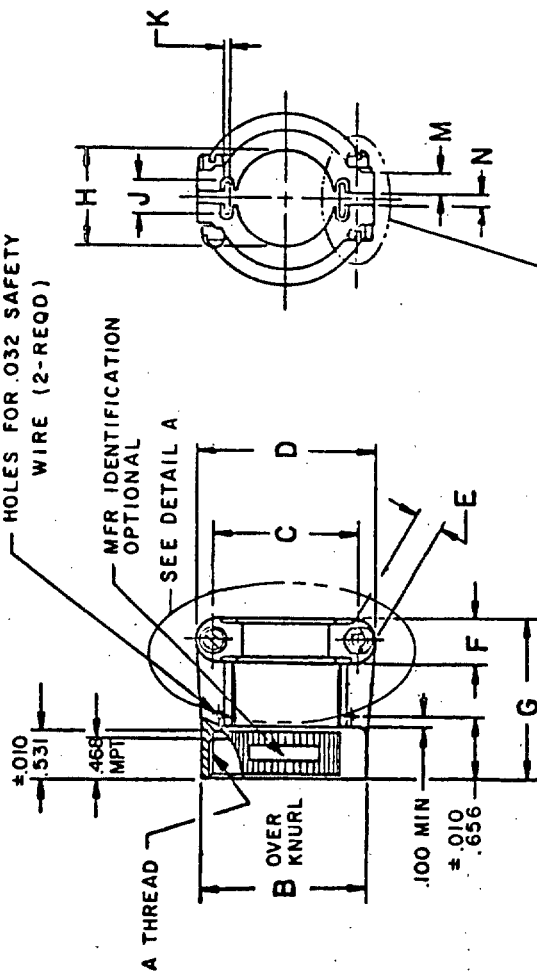
Review activities: Army - MU, MI
Navy - EC, OS
Air Force -

This military standard is approved for use by all Departments and Agencies of the Department of Defense. Selection for all new engineering and design applications and for repetitive use shall be made from this document when applicable.

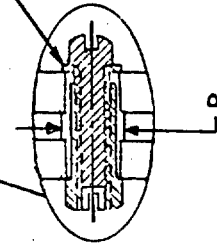
HOLES FOR .032 SAFETY
WIRE (2-REQD)

MFR IDENTIFICATION
OPTIONAL

SEE DETAIL A

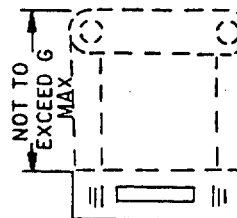


LOCKWASHERS
MS35333-70/71/72



SCREW TELESCOPING, FIL. HD.

#4-40 UNC-2*, clamp size 4 thru 10
#6-32 UNC-2*, clamp size 12 and 16
#8-32 UNC-2*, clamp size 20 thru 32



DESIGN
OPTIONAL
STAINLESS STEEL

DETAIL A

Type D - Cable clamp, heavy duty, high shock

APPROVED 17 Dec 58 REVISED (E) FOR CHANGES SEE SHEET 1

| | | | |
|---|------------------------|-------------------------------------|-------------------|
| P.A. Navy - AS | International interest | TITLE | MILITARY STANDARD |
| Other Cust Army - EL USAF - 85 | | CLAMPS, CABLE, ELECTRICAL CONNECTOR | |
| Procurement Specification MIL-C-5015 | SUPERSEDES: | AN3057 | MS3057 |
| | | | PAGE 6 OF 8 |

DD FORM 1 MAY 73 672 (Coordinated) PREVIOUS EDITIONS OF THIS FORM ARE OBSOLETE.

User activities: Army - AT, AV, ME
Navy - MC, SH, OS
Air Force -

Review activities: Army - MU, MI
Navy - EC, OS
Air Force -

This military standard is approved for use by all Departments and Agencies of the Department of Defense. Selection for all new engineering and design applications and for repetitive use shall be made from this document when applicable.

DD FORM 672 (Coordinated) PREVIOUS EDITIONS OF THIS FORM ARE OBSOLETE.
1 MAY 73

| | | | |
|---|------------------------|-------------------------------------|-------------------|
| P.A. Navy - AS | International Interest | TITLE | MILITARY STANDARD |
| Other Cust Army - EL USAF - 85 | | CLAMPS, CABLE, ELECTRICAL CONNECTOR | MS3057 |
| Procurement Specification MIL-C-5015 | SUPERSEDES: | AN3057 | PAGE 7 OF 8 |

Type D - Cable clamp, heavy duty, high shock.

| Dash No. | A Thread Class 2A | B Dia Max | C | D | E | F | G | H | | J Dia | K | M | N | P | Test plug diameter (inches) | | Pull-out load (pounds) | Clamp size range |
|----------|-------------------|-----------|---------------|-------|------|---------------|-------|-------|-------|-------|------|---------------|------|------|-----------------------------|-------|------------------------|------------------|
| | | | | | | | | Min | Max | | | | | | Min | Max | | |
| -40 | .625-24 UNEF | .937 | .637 | .937 | .250 | .312 | 1.281 | .125 | .312 | .218 | .062 | .156 | .109 | .166 | .109 | .125 | 25 | 1 |
| -60 | .750-20 UNEF | 1.031 | .763 | 1.125 | .250 | .375 | 1.281 | .250 | .437 | .281 | .062 | .175 | .125 | .166 | .234 | .250 | | |
| -80 | .875-20 UNEF | 1.250 | .942 ±.032 | 1.312 | .250 | .422 ±.026 | 1.281 | .312 | .562 | .312 | .062 | .211 ±.018 | .125 | .166 | .296 | .312 | | |
| -100 | 1.000-20 UNEF | 1.250 | .964 | 1.312 | .250 | .437 | 1.281 | .350 | .625 | .312 | .062 | .218 | .125 | .166 | .334 | .350 | 50 | 2 |
| -120 | 1.188-18 UNEF | 1.437 | 1.130 | 1.531 | .250 | .437 | 1.312 | .500 | .750 | .375 | .062 | .250 | .156 | .192 | .484 | .500 | | |
| -160 | 1.438-18 UNEF | 1.688 | 1.375 | 1.750 | .250 | .531 | 1.406 | .625 | .937 | .375 | .062 | .250 | .188 | .192 | .609 | .625 | | |
| -200 | 1.750-18 UNS | 2.000 | 1.703 | 2.093 | .312 | .531 | 1.593 | .875 | 1.250 | .475 | .078 | .312 | .188 | .217 | .859 | .875 | 75 | 3 |
| -240 | 2.000-18 UNS | 2.250 | 1.906 | 2.343 | .312 | .531 | 1.625 | 1.000 | 1.375 | .500 | .093 | .312 | .250 | .217 | .984 | 1.000 | | |
| -280 | 2.250-16 UN | 2.500 | 2.218 | 2.750 | .312 | .812 | 1.900 | 1.250 | 1.625 | .625 | .093 | .312 | .375 | .217 | 1.234 | 1.250 | | |
| -320 | 2.500-16 UN | 2.750 | 2.500 | 3.000 | .312 | .812 | 1.900 | 1.437 | 1.875 | .675 | .125 | .312 | .375 | .217 | 1.421 | 1.437 | 100 | |

NOTE: Unless otherwise specified, tolerances shall be: .xx = ±.01; .xxx = ±.005; angular: x° = ±1°00'; x°xx' = ±0°30'.

FED. SUP CLASS
5935

APPROVED 17 Dec 58 REVISED (E) FOR CHANGES SEE SHEET 1

User activities: Army - AT, AV, ME
Navy - MC, SH, OS
Air Force -

Review activities: Army - MU, MI
Navy - EC, OS
Air Force -

This military standard is approved for use by all Departments and Agencies of the Department of Defense. Selection for all new engineering and design applications and for repetitive use shall be made from this document when applicable.

FED. SUP CLASS
5935

Requirements:

A. Material: Clamp body and saddle - Aluminum alloy, per QQ-A-591, comp. 13,380 or A 380. clamp screws - AISI 300 series stainless steel.

B. Finish:

| Designator | Finish | |
|------------|--|--|
| A | Cadmium plate, per QQ-P-416, type II, class 3, over nickel: Color - Olive drab. | |
| C | Cadmium plate, per QQ-P-416, type II, class 3; Color - Olive drab. | |
| N | Electroless nickel, per MIL-C-26074, class 3 or 4, grade B. | |
| D | Nonmagnetic corrosion resisting steel, per QQ-S-763, 300 series classes | Cadmium plate, per QQ-P-416, type II, class 3, color - black. |
| S | | Passivate |

Performance: MS3188, MS3189, MS3437 or other suitable back shells shall be used as the test fixture when necessary.

C. Magnetic permeability -

The relative magnetic permeability shall be less than 2.0 when checked with an indicator conforming to MIL-I-17214.

D. Vibration -

The assembly shall be subjected to the vibration requirements of MIL-STD-167-1(Ships) paragraph 5.1.3.3.3 and Method 204, condition B of MIL-STD-202. There shall be no loosening of parts or evidence of damage due to vibration. No safety wires shall be used.

E. Shock -

The assembly shall be subjected to the requirements of MIL-S-901, grade A. The clamp is a subassembly, class 1, lightweight test classification (250 lbs. or less) type C. There shall be no loosening of parts or evidence of damage due to shock. No safety wires shall be used.

F. Salt spray (corrosion) -

Salt spray test in accordance with Method 1001 of MIL-STD-1344 test condition B. There shall be no exposure of basis metal due to corrosion.

G. Cable Pull-Out -

Cables shall not pull out when specified loads in table are applied, nor shall the slippage exceed .125 inch.

H. Quality assurance:

A. Examination of product.

I. Military part number: See example.

MS3057 - 16D A
Basic No. _____
Dash No. _____
Finish designator _____
See requirement B

| | | | |
|---|---------------------------|--|-------------------|
| P.A. Navy - AS | International Interest | TITLE CLAMPS, CABLE, ELECTRICAL CONNECTOR | MILITARY STANDARD |
| Other Cust Army - EL USAF - 85 | | | MS3057 |
| Procurement Specification MIL-C-5015 | SUPERSEDES: AN3057 | PAGE 8 | OF 8 |

DD FORM 672 (Coordinated) PREVIOUS EDITIONS OF THIS FORM ARE OBSOLETE
1 MAY 75

APPROVED 17 Dec 58 REVISED (E) FOR CHANGES SEE SHEET 1