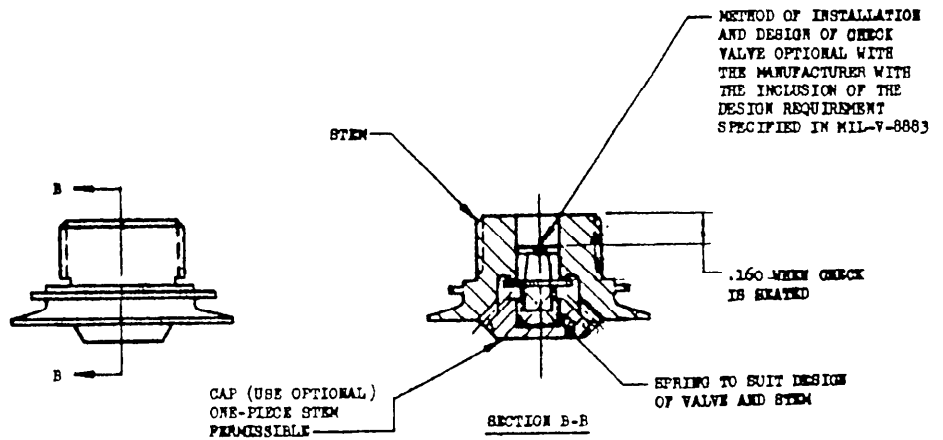


PERMANENTLY MARK THIS AREA WITH CURE DATE OF ELASTOMERIC MATERIAL (MONTH AND YEAR) AND MANUFACTURER'S NAME OR TRADEMARK

INLET CHECK VALVE ASSY



CAP (USE OPTIONAL) ONE-PIECE STEM FRANGIBLE

SECTION B-B

STEM ASSEMBLY

NOTES:

1. MATERIAL: SEE PROCUREMENT SPECIFICATION.
2. FINISH: UNLESS OTHERWISE SPECIFIED, MAXIMUM SURFACE ROUGHNESS SHALL BE 125/.
3. WEIGHT: 2.8 OUNCES MAXIMUM
4. DIMENSIONS IN INCHES. UNLESS OTHERWISE SPECIFIED, TOLERANCES: DECIMALS ±.005 ANGLES ±0° 30'.

FOR DESIGN FEATURE PURPOSES, THIS STANDARD TAKES PRECEDENCE OVER PROCUREMENT DOCUMENTS REFERENCED HEREIN. REFERENCED DOCUMENTS SHALL BE OF THE ISSUE IN EFFECT ON DATE OF INVITATIONS FOR BID.

Review activities:
Navy - WP
Army - MC
USAF - LI, 8L

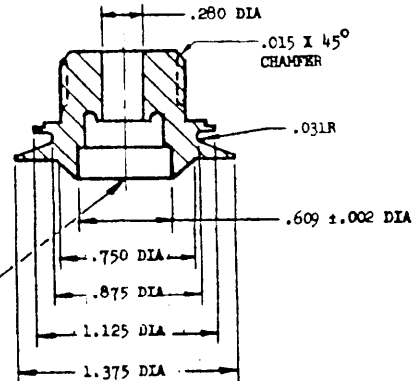
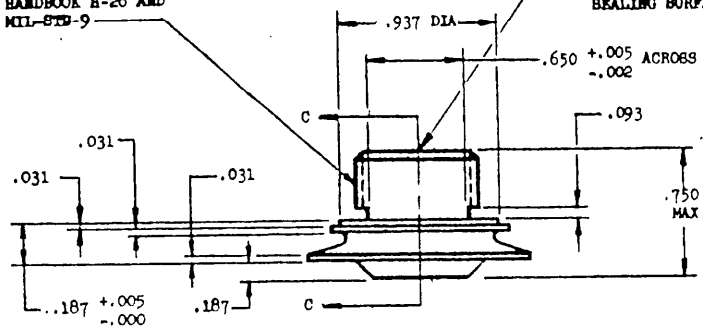
This military standard is approved by the Department of Defense and is mandatory on all activities. Selection for all new engineering and design applications and for repetitive use shall be made from this document.

P.A. Navy - WP Other Cost Army - MD USAF - LI	TITLE	MILITARY STANDARD
	VALVE, CHECK, ISART, ONE-PAN LIFE RAFT, TYPE I	MS29599
PROCUREMENT SPECIFICATION MIL-V-8883	SUPERSEDES:	SHEET 1 OF 2

FED. SUP CLASS
4220

3/4-27UNS-2A .265 MIN
PERFECT THREAD IN
ACCORDANCE WITH
HANDBOOK H-26 AND
MIL-STD-9

FINISH END OF STEM TO 32/ MAXIMUM
ROUGHNESS. SURFACE MUST BE PROTECTED
DURING HANDLING AND SHIPPING TO PREVENT
SCRATCHING AND BURRING. THIS IS A
SEALING SURFACE.

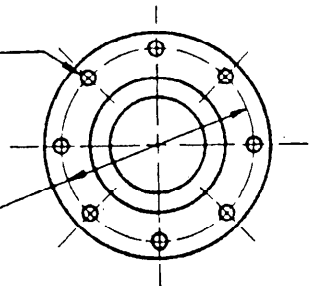


MACHINING FOR
CAP OPTIONAL
(SEE STEM ASSY)

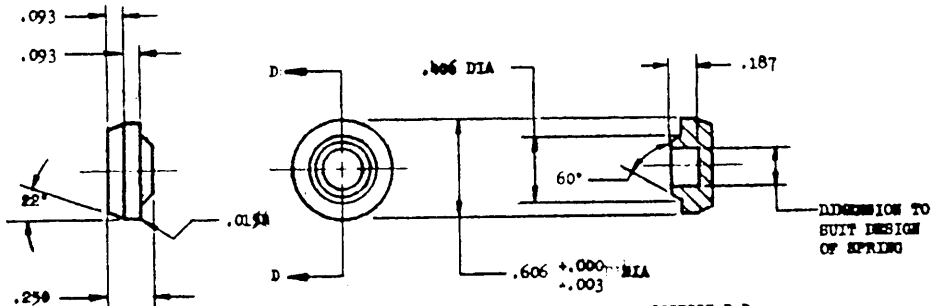
SECTION C-C

.093 DIA THRU
8 HOLES
EQUALLY SPACED

1.125 DIA



STEM



SECTION D-D

CAP (OPTIONAL)

Review activities: Navy - WP
Army - MO
USAF - 11, 81

This military standard is approved by the Department of Defense and is
mandatory on all activities. Selection for all new engineering and design
applications and for repetitive use shall be made from this document.

APPROVED 10 Jun 65 REVISED

P.A. Navy - WP Other Cost Army - MO USAF - 11	TITLE	MILITARY STANDARD
	VALVE, CHECK, INLET, ONE-MAN LIFE RAFT, TYPE Y	MS29599
PROCUREMENT SPECIFICATION MIL-Y-8883	SUPERSEDES:	SHEET 2 OF

DD FORM 672-1 (Coordinate)

PREVIOUS EDITIONS OF THIS FORM ARE OBSOLETE.

PLATE NO. 14638