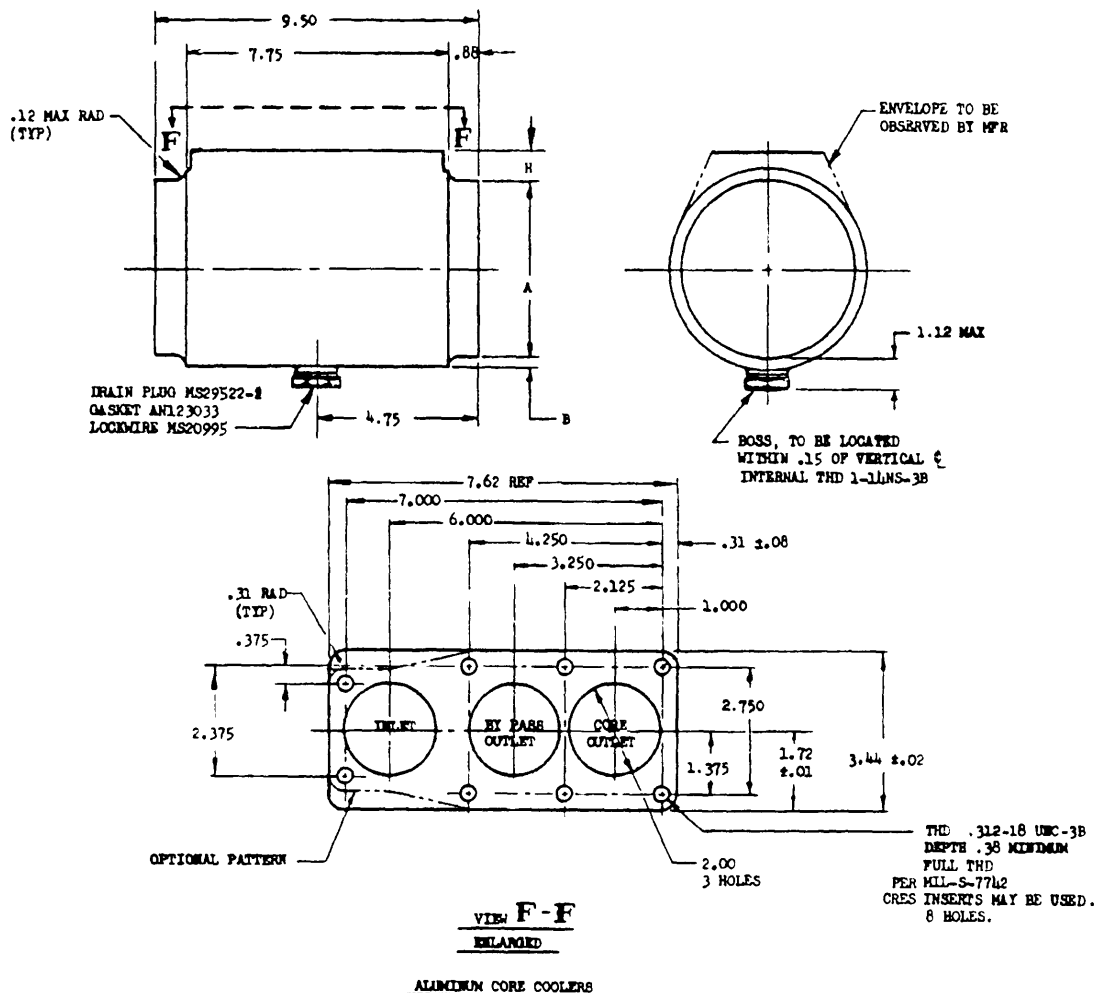


FED. SUP CLASS  
2935

| MS PART NO. | WT MAX LB | FRONTAL CORE AREA | A DIA | B   | H    | MS PART NO. | WT MAX LB | FRONTAL CORE AREA | A DIA | B   | H    |
|-------------|-----------|-------------------|-------|-----|------|-------------|-----------|-------------------|-------|-----|------|
| MS29590 -5  | 9.0       | 19.6              | 5.00  | .38 | .75  | MS29590 -15 | 31.5      | 176.7             | 15.00 | .63 | 1.00 |
| MS29590 -6  | 10.0      | 28.3              | 6.00  | .38 | .75  | MS29590 -16 | 35.0      | 201.1             | 16.00 | .63 | 1.00 |
| MS29590 -7  | 11.0      | 38.5              | 7.00  | .38 | .75  | MS29590 -17 | 38.5      | 227.0             | 17.00 | .63 | 1.00 |
| MS29590 -8  | 13.0      | 50.3              | 8.00  | .38 | .75  | MS29590 -18 | 43.0      | 254.5             | 18.00 | .63 | 1.00 |
| MS29590 -9  | 15.0      | 63.6              | 9.00  | .38 | .75  | MS29590 -19 | 47.5      | 283.5             | 19.00 | .75 | 1.25 |
| MS29590 -10 | 17.0      | 78.5              | 10.00 | .38 | .75  | MS29590 -20 | 52.0      | 314.2             | 20.00 | .75 | 1.25 |
| MS29590 -11 | 19.0      | 95.0              | 11.00 | .38 | .75  | MS29590 -21 | 56.5      | 346.4             | 21.00 | .75 | 1.25 |
| MS29590 -12 | 22.0      | 113.1             | 12.00 | .38 | .75  | MS29590 -22 | 61.0      | 380.1             | 22.00 | .75 | 1.25 |
| MS29590 -13 | 25.0      | 132.7             | 13.00 | .38 | .75  |             |           |                   |       |     |      |
| MS29590 -14 | 28.0      | 153.9             | 14.00 | .63 | 1.00 |             |           |                   |       |     |      |

INTERCHANGEABILITY RELATIONSHIP - MS29590 PARTS AND AN125 PARTS OF THE SAME DASH NUMBER ARE UNIVERSALLY INTERCHANGEABLE. THE CANCELED AN125 PARTS SHOULD BE USED UNTIL EXISTING STOCK IS EXHAUSTED.

DIMENSIONS IN INCHES. UNLESS OTHERWISE SPECIFIED, TOLERANCES: TWO PLACE DECIMALS  $\pm .06$ , THREE PLACE DECIMALS  $\pm .005$ .

FOR DESIGN FEATURE PURPOSES, THIS STANDARD TAKES PRECEDENCE OVER PROCUREMENT DOCUMENTS REFERENCED HEREIN.

REFERENCES DOCUMENTS SHALL BE OF THE ISSUE IN EFFECT ON DATE OF INVITATIONS FOR BID.

|   |  |                                   |
|---|--|-----------------------------------|
| P.A. AIRFORCE - 71 (A)                  | TITLE  | MILITARY STANDARD<br>MS29590 (71) |
| Other Cust<br>USAF - 99                 | COOLER - LUBRICATING OIL, AIRCRAFT ENGINE,<br>PETROLEUM BASE, TUBULAR, ROUND |                                   |
| PROCUREMENT SPECIFICATION<br>MIL-C-5637 | SUPERSEDES. AN125  | SHEET 1 OF 1                      |

DD FORM 672-1 (Coordinated)

PREVIOUS EDITIONS OF THIS FORM ARE OBSOLETE.

2935 - F024

APPROVED 16 DEC 64 REVISED (A) 1 October 1988

DISTRIBUTION STATEMENT A. Approved for public release; distribution is unlimited.  
AMSC N/A  
THIS MILITARY STANDARD IS APPROVED FOR USE WITHIN THE DEPARTMENT OF THE AIR FORCE  
AND IS AVAILABLE FOR USE BY ALL DEPARTMENTS AND AGENCIES OF THE DEPARTMENT OF  
DEFENSE

NOTES TO PRINTER: REDUCE BORDER TO 6-27/32=9-3/4" PRINT LEFT  
BORDER-LINE ONE INCH FROM LEFT EDGE OF 8-10-1/2" SHEET  
PRINT BOTTOM BORDER LINE 3/8 INCH FROM BOTTOM EDGE OF 8-10-1/2"  
SIGNATURE FORM NOT TO BE INCLUDED ON 8-10-1/2" SHEET.

DRAWN BY TECH STDS OFFICE  
TYPED BY GEORGE A. BOWEN AND STANLEY  
CHECKED BY

630  
DATE 0916

23 MAY 60