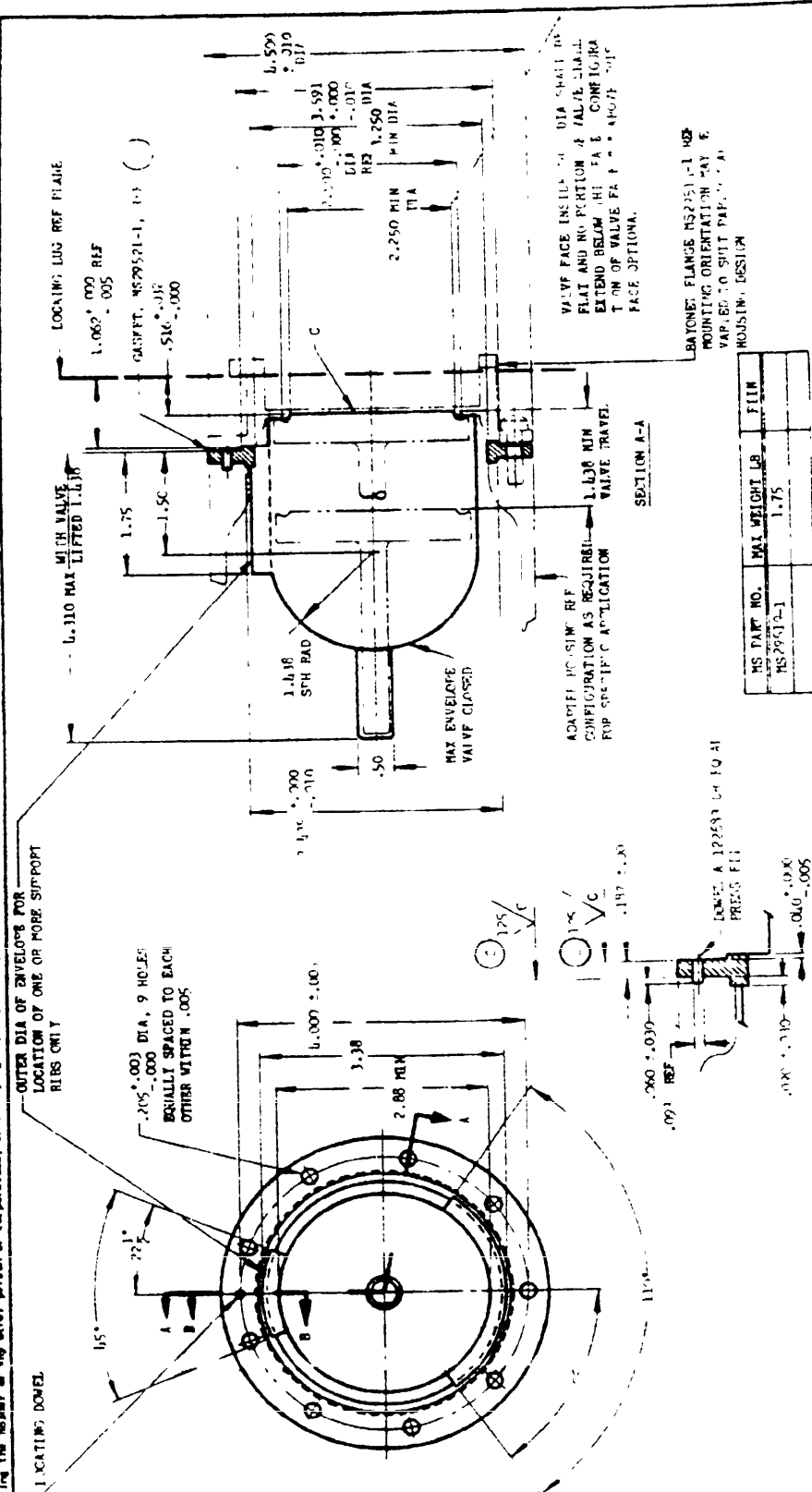


When Government drawings, specifications, or other data are used for any purpose other than in connection with a definitely related Government procurement operation, the United States Government thereby incurs no responsibility, nor any obligation whatsoever; and the fact that the Government may have furnished, or in any way supplied the said drawings, specifications, or other data is not to be regarded by implication as authorizing, or approving, or endorsing, or warranting, or certifying, or assuming liability for, in any way, the use thereof for any purpose other than in connection with a definitely related Government procurement operation.



MS PART NO.	MAX WEIGHT LB	FILM
MS29612-1	1.75	

THE VALVE SHALL BE SPRING LOADED, LOADING AT A TRAVEL OF 1.138 SHALL NOT EXCEED .50 IP.

REMOVE ALL BURRS AND BREAK SHARP EDGES .016 MAX RAD.

THE CURVE REPRESENTS THE MAXIMUM ENVELOPE OF THE ADAPTED ASSEMBLY, UNLESS OTHERWISE SPECIFIED.

THIS QUANTITY REPRESENTS THE MAXIMUM INCREASE OF THE ADJUST ASSURES, DUE TO THE INCREASING OF THE DISTANCE IN INCHES. INCREASES SPECIFIED. DECIMALS ± 0.10 , ANGLES $\pm 2^\circ$.

FOR SURFACE ROUGHNESS, SEE STANDARD MIL-11-10.

THIS STANDARD TAKES PRECEDENCE OVER DOCUMENTS REFERENCED HEREIN
RELEVANT DOCUMENTS SHALL BE OF THE ISSUE IN EFFECT ON DATE OF

THIS DOCUMENT HAS BEEN PROMULGATED BY THE DEPARTMENT OF DEFENSE AS THE MILITARY STANDARD TO LIMIT THE SELECTION OF THE ITEM, PRODUCT, OR DESIGN COVERED BY A U.S. REFERENCE DOCUMENTS SHALL BE OF THE KIND IN EFFECT ON DATE OF PUBLICATION OF THE STANDARD. THIS STANDARD SHALL BECOME EFFECTIVE NOT LATER THAN 90 DAYS AFTER THE LATEST DATE OF APPROVAL. NOON.

APPROVED 2: MAY 52 REVISED A 26 JUN 54 A 28 FEB 56 C 12 JUN 56