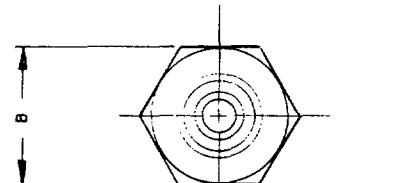
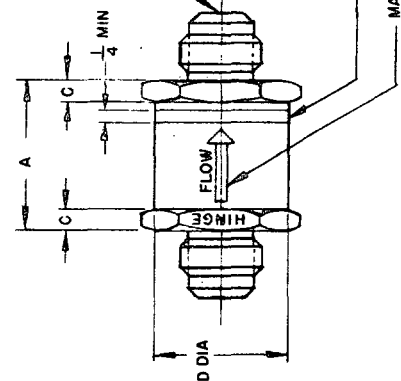
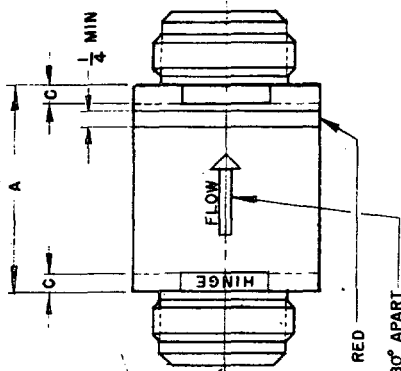
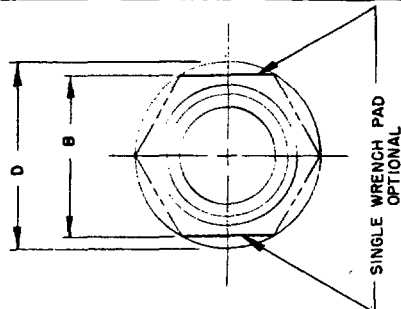


Activities: Army - AV, ME, MI  
Navy - AS  
USAF - 99

military standard is approved for use by all Departments and Agencies  
the Department of Defense. Selection for all new engineering and design  
applications and for repetitive use shall be made from this document.

BOTH ENDS IN ACCORDANCE WITH MS33656, STYLE E  
FOR APPLICABLE TUBE SIZE, EXCEPT HEX



COLOR IDENTIFICATION, RED

MARK TWO PLACES APPROX 180° APART

DASH NO.	TUBING O.D.	(E) RATED FLOW CAPACITY GPM	A ±.031	(a) B	C MIN	D MAX DIA
-4	.250	25	1.563	1.063	.125	1.066
-6	.375	37.5	1.674	1.187	.125	1.190
-8	.500	50	1.782	1.500	.250	1.253
-10	.625	62.5	2.063	1.812	.250	1.503
-12	.750	75	2.375	2.500	.312	1.820
-16	1.000	100	2.688	3.125	.375	2.508
-20	1.250	125	3.063	3.125	.375	2.758
-24	1.500	150	3.813	3.125	.312	3.500
-32	2.000	200	3.813	3.125	.312	3.500

(a) "B" SHALL FIT STANDARD WRENCH OPENING.

MATERIAL: SEE PROCUREMENT SPECIFICATION.

FINISH: SEE PROCUREMENT SPECIFICATION.

REMOVE ALL BURRS AND BREAK SHARP EDGES .016 MAXIMUM.

DIMENSIONS IN INCHES. UNLESS OTHERWISE SPECIFIED, TOLERANCES: DECIMALS ±.010.

THE MARKING "HINGE" IS APPLICABLE ONLY TO SWING TYPE CHECK VALVES.

(E) PART NUMBER: PART NUMBER CONSISTS OF MS NUMBER PLUS THE CLASS LETTER "A", "B" OR "C" (SEE MIL-V-7899)  
PLUS THE DASH NUMBER.

EXAMPLES: MS28884A-32, MS28884B-32, MS28884C-32.

FOR DESIGN FEATURE PURPOSES, THIS STANDARD TAKES PRECEDENCE OVER PROCUREMENT DOCUMENTS REFERENCED HEREIN  
REFERENCED DOCUMENTS SHALL BE OF THE ISSUE IN EFFECT OF DATE OF INVITATIONS FOR BID.

APPROVED 11 Apr 52 REVISED (A) 8 Sep 53 (B) 27 Jun 57 (C) 28 May 71 (D) 12 Jun 74 (E) 10 Jan 77

P.A. Air Force - II

Other Cust

Navy - AS  
Army - AV

TITLE

VALVE, FUEL CHECK, LOW PRESSURE,  
FLARED TUBE CONNECTION

PROCUREMENT SPECIFICATION  
MIL-V-7899

SUPERSEDES:

MILITARY STANDARD

MS28884

SHEET 1 OF 1