

INCH-POUND
 MS28753D
 6 August 2010
 SUPERSEDING
 MS28753C
 2 November 1999

DETAIL SPECIFICATION SHEET

FITTING END, SELF-SEALING FUEL HOSE, SWIVEL, DETACHABLE, FLANGED, STRAIGHT

This specification is approved for use by all Departments and Agencies of the Department of Defense.

The requirements for acquiring the product described herein shall consist of this specification sheet.

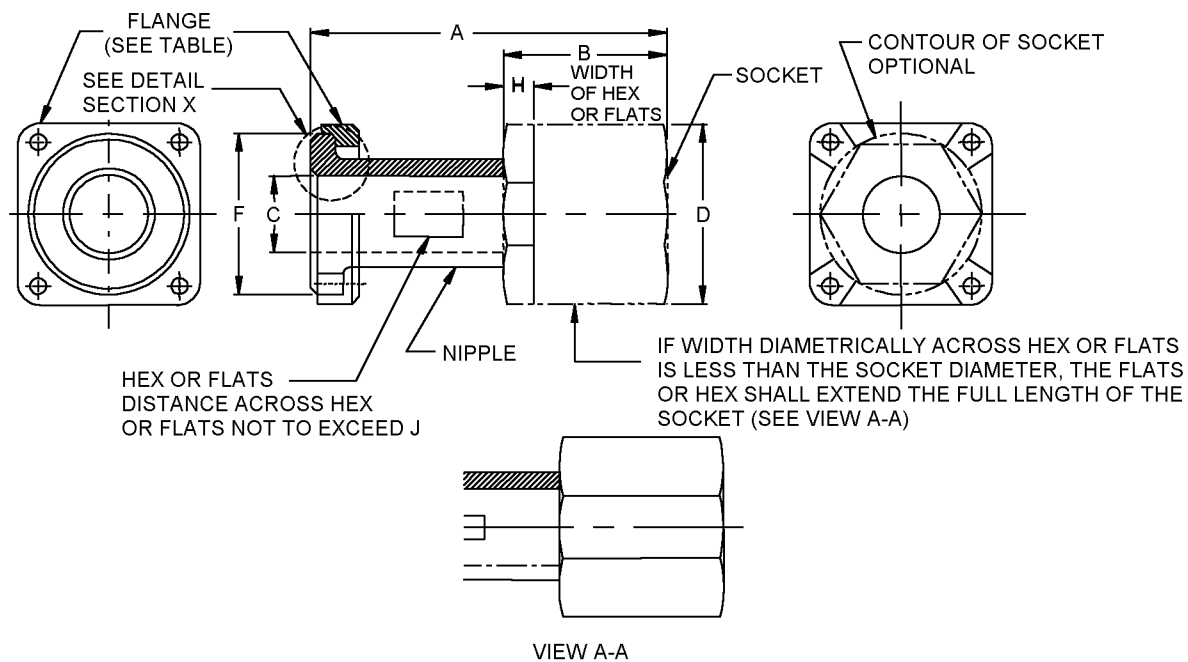
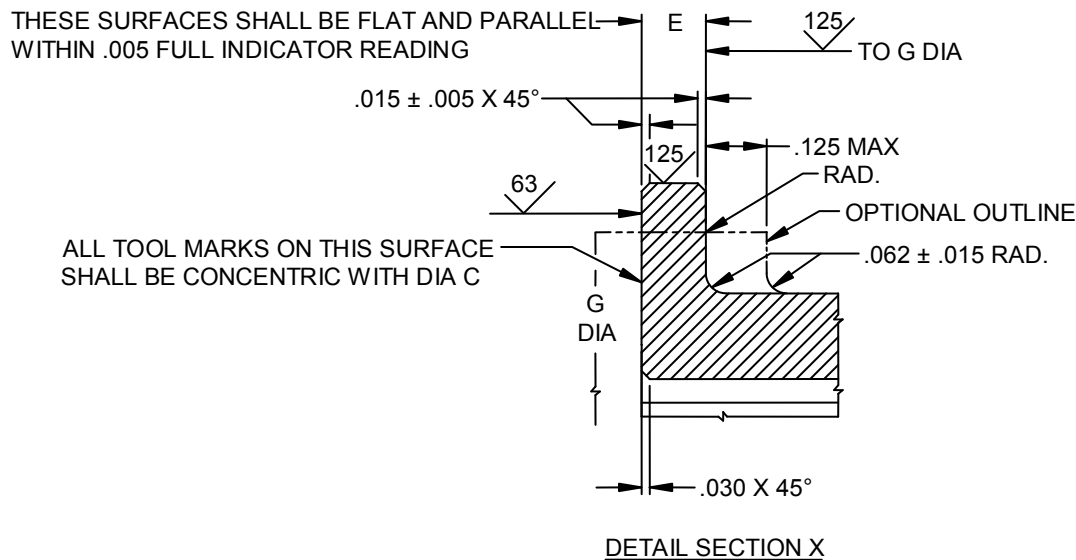


FIGURE 1. Straight fuel hose fitting.

MS28753D



PIN (see note 4)	Nominal tubing and hose size (REF)	Flange PIN	A Max	B Max	C Min	D Max	E + .000 - .005
MS28753D16	1 (1.000)	MS20756D16	3.141	2.000	.813	1.953	.156
MS28753D20	1 ¼ (1.250)	MS20756D20	3.141	2.000	1.047	2.313	.156
MS28753D24	1 ½ (1.500)	MS20756D24	3.078	2.000	1.281	2.563	.188
MS28753D32	2 (2.000)	MS20756D32	3.500	2.250	1.750	3.125	.188
MS28753D40	2 ½ (2.500)	MS20756D40	3.891	2.500	2.250	3.625	.188
MS28753D48	3 (3.000)	MS20756D48	3.891	2.500	2.875	4.438	.188

PIN	F + .000 - .005	G Max	H Min	J Min	Weight lb (Approx)
MS28753D16	1.500	1.188	.375	1.343	.261
MS28753D20	1.844	1.500	.500	1.656	.299
MS28753D24	2.125	1.750	.500	1.906	.305
MS28753D32	2.750	2.375	.625	2.531	.325
MS28753D40	3.281	2.875	1.000	3.051	.607
MS28753D48	3.781	3.375	1.250	3.250	.954

Inches	mm	Inches	mm	Inches	mm	Inches	mm	Inches	mm	Inches	mm
.156	3.962	1.047	26.594	1.750	44.450	2.313	58.750	3.000	76.200	3.375	85.725
.188	4.775	1.188	30.175	1.844	46.838	2.375	60.325	3.051	77.495	3.500	88.900
.375	9.525	1.250	31.750	1.906	48.412	2.500	63.500	3.078	78.181	3.625	92.075
.500	12.700	1.281	32.537	1.953	49.606	2.531	64.287	3.125	79.375	3.781	96.037
.625	15.875	1.343	34.112	2.000	50.800	2.563	65.100	3.141	79.781	3.891	98.831
.813	20.650	1.500	38.100	2.125	53.975	2.750	69.850	3.250	82.550	4.438	112.725
1.000	25.400	1.656	42.062	2.250	57.150	2.875	73.025	3.281	83.337		

FIGURE 1. Straight fuel hose fitting – Continued.

MS28753D

NOTES:

1. Dimensions are in Inches. Unless otherwise specified, tolerances: decimals $\pm .010$; angles $\pm .01^\circ$.
2. Metric equivalents are given for information only.
3. Hex flange, see MS20756.
4. Part or Identifying Number (PIN)

FIGURE 1. Straight fuel hose fitting – Continued.

REQUIREMENTS:

Material: Aluminum alloy, see SAE-AS4841.

Hex or flats shall fit standard wrench openings.

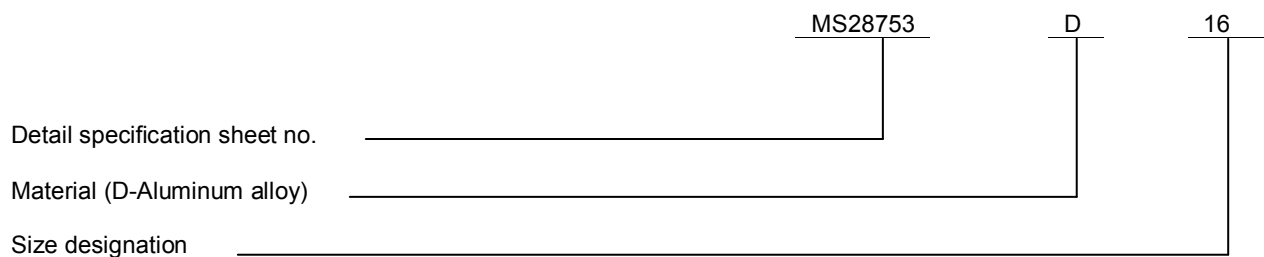
Dimensions C, F and G shall be concentric within .010 full indicator reading.

Surface roughness shall be in accordance with ASME-B46.1.

Fittings shall be permanently marked with the applicable MS PIN on an unfinished surface of the nipple.

Remove all burrs and sharp edges. The interior surface of the fitting shall be smooth and free from projections.

Example of PIN: MS28753D16



Changes from previous issue. Marginal notations are not used in this revision to identify changes with respect to the previous issue, due to the extent of the changes.

Referenced documents. This document references the following:

MS20756
ASME-B46.1
SAE-AS4841

MS28753D

CONCLUDING MATERIAL

Custodians:
Air Force – 99
DLA – CC

Preparing activity:
DLA – CC

(Project 4730-2010-065)

Review activity:
Air Force – 71

NOTE: The activities listed above were interested in this document as of the date of this document. Since organizations and responsibilities can change, you should verify the currency of the information above using the ASSIST Online database at <https://assist.daps.dla.mil>.