

INCH-POUND

MS28753C
2 November 1999
 SUPERSEDING
 MS28753 Rev B
 24 January 1986

DETAIL SPECIFICATION SHEET

FITTING END, SELF-SEALING FUEL HOSE, SWIVEL, DETACHABLE, FLANGED, STRAIGHT

This specification is approved for use by all Departments and
 Agencies of the Department of Defense.

TABLE I. Dimensions.

Fitting End Part No.	Tubing/ Hose Size NOM (REF)	Flange Part No.	A Max	B Max	C Min	D Max	E +.000 -.005
MS28753D16	1	MS20756D16	3.141	2.000	.813	1.953	.156
MS28753D20	1 1/4	MS20756D20	3.141	2.000	1.047	2.313	.156
MS28753D24	1 1/2	MS20756D24	3.078	2.000	1.281	2.563	.188
MS28753D32	2	MS20756D32	3.500	2.250	1.750	3.125	.188
MS28753D40	2 1/2	MS20756D40	3.891	2.500	2.250	3.625	.188
MS28753D48	3	MS20756D48	3.891	2.500	2.875	4.438	.188

TABLE I. Dimensions -continued.

Fitting End Part No.	F +.000 -.005	G Max	H Min	J Min	Weight Lb (Approx)
MS28753D16	1.500	1.188	.375	1.343	.261
MS28753D20	1.844	1.500	.500	1.656	.299
MS28753D24	2.125	1.750	.500	1.906	.305
MS28753D32	2.750	2.375	.625	2.531	.325
MS28753D40	3.281	2.875	1.000	3.031	.607
MS28753D48	3.781	3.375	1.250	3.250	.954

MS28753C

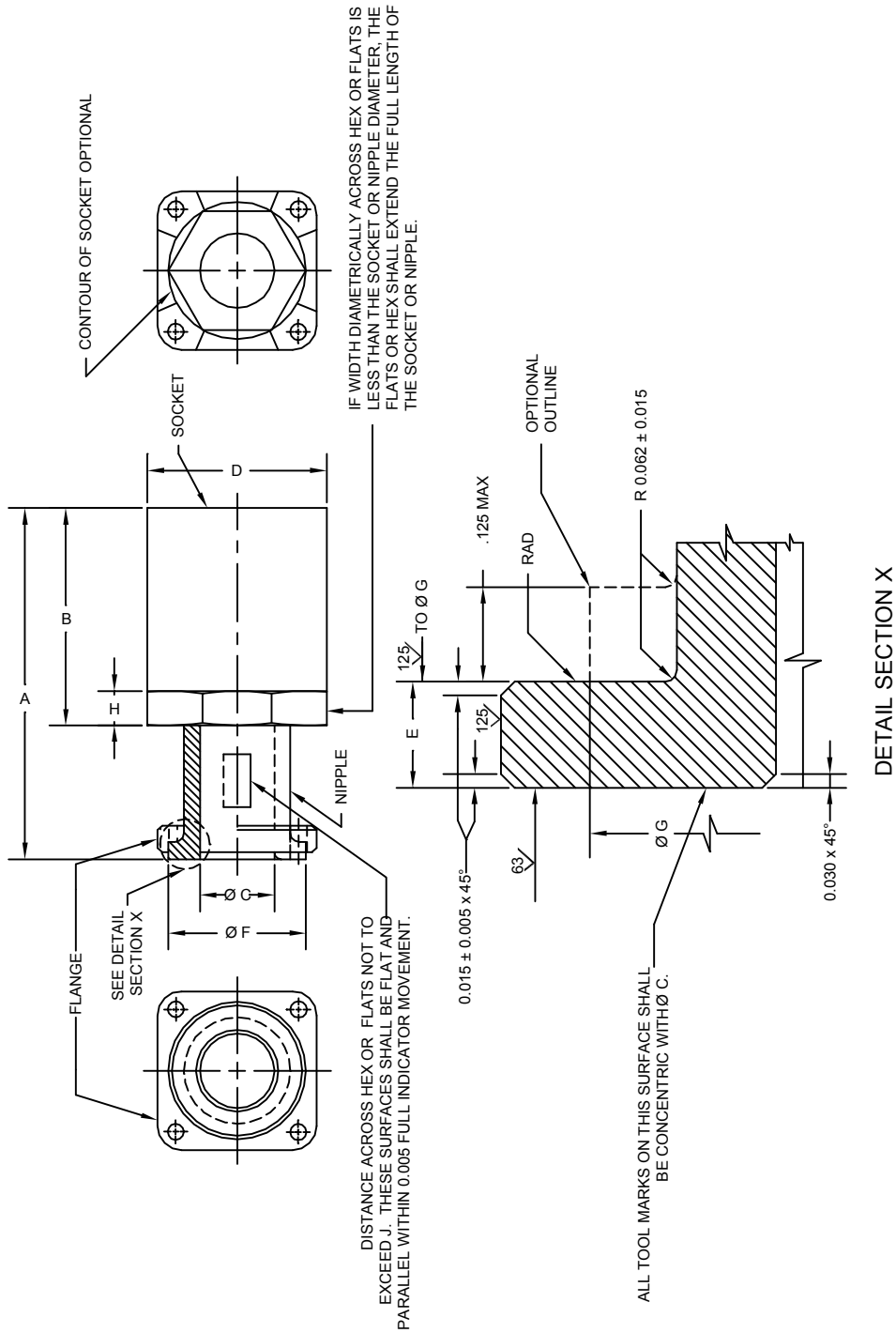


FIGURE 1.

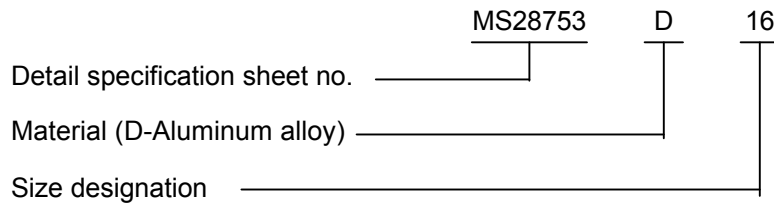
MS28753C

REQUIREMENTS:

1. Material: Aluminum alloy.
2. Hex or flats shall fit standard wrench openings.
3. C, F and G shall be concentric within .010 full indicator movement.
4. Surface roughness shall be in accordance with ASME B46.1.
5. Fittings shall be permanently marked with the applicable MS part number on an unfinished surface of the nipple.
6. Remove all burrs and sharp edges. The interior surface of the fitting shall be smooth and free from projections.

NOTES:

1. Dimensions are in inches. Unless otherwise specified, tolerances: decimals $\pm .010$; angles $\pm 1^\circ$.
2. Hex flange MS20756 not shown.
3. Part number: Example of military part number: MS28753D16



Custodian:
Air Force - 99

Preparing activity:
DLA - CC

(Project 4730-0905)

Review activity:
Air Force - 82