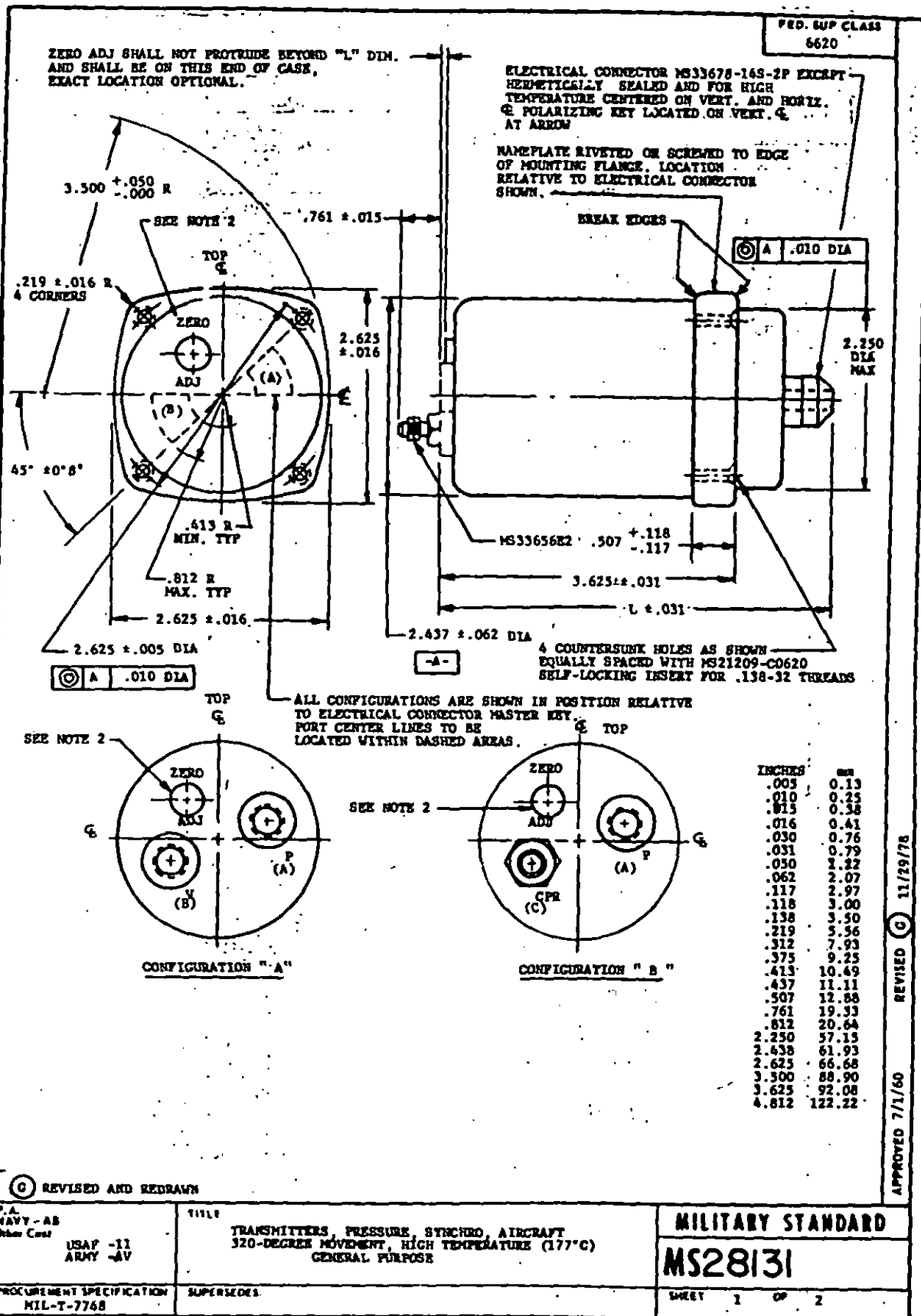


USER SYMBOLS:
NAVY - CG

REVISED SYMBOLS:
NAVY - AS
NAVY - 71
ARMY - AV

"Revision/issue information is current as of the date of this document. For future reworking of changes to this document, draft identification should be based on the information in the current document."

"This drawing is prepared as shown by all Departments and Agencies of the Department of Defense. Attention for all new and existing drawings and for reworking shall be made from this document."



USER SYMBOLS:
 NAVY - CC
 NAVY - CC

 REVIEWER SYMBOLS:
 NAVY - AS
 USAF - 71
 ARMY - AV

 "Review/issue information is current as of the date of this document.
 For future identification of changes to this document, draft attention
 should be based on the information in the current DODISS."

 This military standard is approved by the Department of Defense and is approved by the Department of Defense for use by all the
 engineering and design organizations in the Department of Defense and is approved by the Department of Defense for use by all the
 organizations in the Department of Defense.

FED. SUP CLASS 6620								
DASH NO.	NAME	L	MARKING IDENTIFICATION (NOTE 1) FOR AREAS:			BOSSES OR FITTING ENDS REQUIRED FOR AREAS:		
			A	B	C* (NOT SHOWN)	A	B	C*
-1T	0-10 PSI DIFFERENTIAL PRESS.	4.812	P ₁	P ₂	-	MS33649-4 **	MS33649-4 **	-
-2T	0-10 PSI GAGE PRESS.		P	V	-			-
-3T	0-25 PSI DIFFERENTIAL PRESS.		P ₁	P ₂	-			-
-4T	0-25 PSI GAGE PRESS.		P	V	-			-
-5T	0-50 PSI DIFFERENTIAL PRESS.		P ₁	P ₂	-			-
-6T	0-50 PSI GAGE PRESS.		P	V	-			-
-7T	0-100 PSI DIFFERENTIAL PRESS.		P ₁	P ₂	-			-
-8T	0-100 PSI GAGE PRESS.		P	V	-			-
-9T	0-250 PSI DIFFERENTIAL PRESS.		P ₁	P ₂	CPR			-
-10T	0-250 PSI GAGE PRESS.		P	V & CPR	-			-
-11T	0-300 PSI DIFFERENTIAL PRESS.		P ₁	P ₂	CPR			***
-12T	0-300 PSI GAGE PRESSURE		P	V & CPR	-			-
-13T	0-500 PSI DIFFERENTIAL PRESS.		P ₁	P ₂	CPR			***
-14T	0-500 PSI GAGE PRESS.		P	V & CPR	-			-
-15T	0-1000 PSI GAGE PRESSURE		P	V & CPR	-			-
-16T	0-1000 PSI APPROXIMATE GAGE PRESS.		P	-	CPR		-	***
-17T	0-2500 PSI APPROXIMATE GAGE PRESS.		P	-	CPR		-	***
-18T	0-5000 PSI APPROXIMATE GAGE PRESS.		P	-	CPR		-	***
-19T	0-150 PSI DIFFERENTIAL PRESS.		P ₁	P ₂	CPR		MS33649-4 **	***
-20T	0-150 PSI GAGE PRESS.		P	V & CPR	-			-
-21T	0-200 PSI DIFFERENTIAL PRESS.		P ₁	P ₂	CPR			***
-22T	0-200 PSI GAGE PRESS.		P	V & CPR	-			-

- * LOCATION OPTIONAL ON BACK PLATE.
 ** MS33649-4 EXCEPT THREADS SHALL BE .437-20UNF-3B AND "C" DIMENSION NEED NOT BE CONFORMED TO.
 *** MS33656E2 EXCEPT THREADS SHALL BE .312-24UNF-3A

NOTES

- MARKING SHALL BE RAISED .030 MINIMUM AND PAINTED TO CONTRAST. SUBSTITUTE THE PROPER IDENTIFICATION FOR (A) AND (B) AS LISTED IN THE TABLE OF SHEET 2. IF A "C" CONNECTION IS REQUIRED, IT SHALL BE IDENTIFIED BY "CPR".
- ZERO ADJUSTMENT PROTECTION SHALL BE INTEGRAL TO THE CASE AND ACCESS TO OR OPERATION OF THE ADJUSTMENT MECHANISM SHALL NOT REQUIRE DETACHMENT OF PARTS. LOCKWIRING IS PERMISSIBLE PROVIDED IT IS INTENDED PRIMARILY TO DISCOURAGE UNAUTHORIZED ADJUSTMENT AND IS NOT THE SOLE MEANS OF PREVENTING MOVEMENT DURING TRANSMITTER USAGE.
- DIMENSIONS ARE IN INCHES.
- METRIC EQUIVALENTS (TO THE NEAREST .01 mm) ARE GIVEN FOR GENERAL INFORMATION ONLY AND ARE BASED UPON 1 INCH = 25.4mm.
- REFERENCED DOCUMENTS SHALL BE OF THE ISSUE IN EFFECT ON DATE OF INVITATIONS FOR BIDS, OR REQUEST FOR PROPOSAL EXCEPT THAT REFERENCED ADOPTED INDUSTRY DOCUMENTS SHALL GIVE THE DATE OF THE ISSUE ADOPTED.
- FOR DESIGN FEATURE PURPOSES, THIS STANDARD TAKES PRECEDENCE OVER PROCUREMENT DOCUMENTS REFERENCED HEREIN.

P.A. NAVY - AS Other Cost	TITLE TRANSMITTERS, PRESSURE, SYNCHRO, AIRCRAFT 320-DEGREE MOVEMENT, HIGH TEMPERATURE (177°C), GENERAL PURPOSE	MILITARY STANDARD	
		MS28131	
PROCUREMENT SPECIFICATION MIL-T-7748	SUPERSEDES	SHEET 2 OF 2	

DD FORM 672-1 (Continued)

PREVIOUS EDITIONS OF THIS FORM ARE OBSOLETE.

PLATE NO. 2286

 APPROVED 7/1/60
 REVISED 7/1/60
 FOR CHANGE SIZE SHEET 1