

This standard has been approved by the Bureau of Aeronautics Department of the Navy and is mandatory for use by that activity. All other military activities are required to employ this standard where suitable.

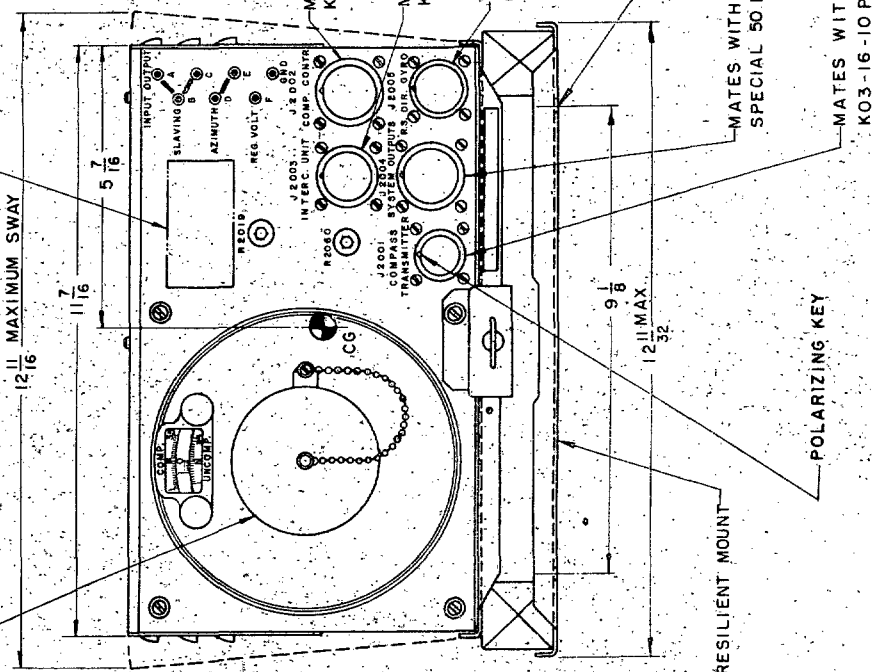
NOTICE.—When Government drawings, specifications, or other data are used for any purpose other than in connection with a definitely related Government procurement operation, the United States Government thereby incurs no responsibility, nor any obligation whatsoever; and the fact that the Government may have furnished, furnished, or in any way supplied the said drawings, specifications, or other data is not to be regarded by implication or otherwise as in any manner licensing the holder or any other person or corporation, or conveying any rights or permission to manufacture, use, or sell any patented invention that may in any way be related thereto.

TYPE NQMS PART NO. FIIN	
I	MS28100-1
II	MS28100-2

DIMENSIONS IN INCHES. TOLERANCE: $\pm \frac{.32}{16}$
 UNIT WEIGHT PLUS CONNECTORS & ONE FOOT OF CONNECTING CABLES MINUS RESILIENT MOUNT = 16.5 * APPROX.
 UNIT WEIGHT PLUS CONNECTORS & ONE FOOT OF CONNECTING CABLES PLUS RESILIENT MOUNT = 17.5 * APPROX.

SCREW CAP COVER FOR ACCESS TO 24 POINT CAM COMPENSATOR ADJUSTING SCREWS

APPROX. LOCATION OF NAMEPLATE DATA



FED. SUP CLASS
6605

P.A. NAVY - BUAEF Other Cust	TITLE AMPLIFIER, COMPASS SERVO; TYPE MF-1 COMPASS	MILITARY STANDARD
PROCUREMENT SPECIFICATION MIL-C-22165	SUPERSEDES:	MS28100 (AER)
		SHEET OF

DD FORM 672-1 (Limited coordination)
1 SEP 57

PREVIOUS EDITIONS OF THIS FORM ARE OBSOLETE.

APPROVED 10 JUNE 1959 REVISED 18 Aug 1959