

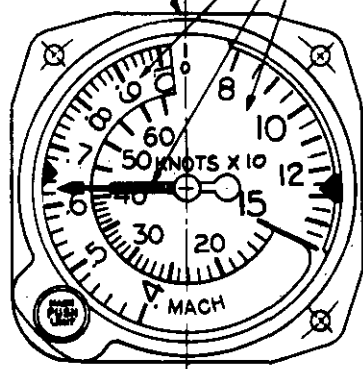
NOTICE—When Government drawings, specifications, or other data are used for any purpose other than in connection with a definitely related Government procurement operation, the United States Government thereby incurs no responsibility, nor any obligation whatsoever; and the fact that the Government may have furnished, furnished, or in any way supplied the said drawings, specifications, or other data is not to be regarded by implication or otherwise as in any manner licensing the holder or any other person or corporation, or carrying any right or permission to manufacture, use, or sell any patented invention that may in any way be related thereto.

This standard has been approved by the Bureau of Naval Weapons Department of the Navy and is mandatory for use by that activity. All other military activities are required to comply with this standard where suitable.

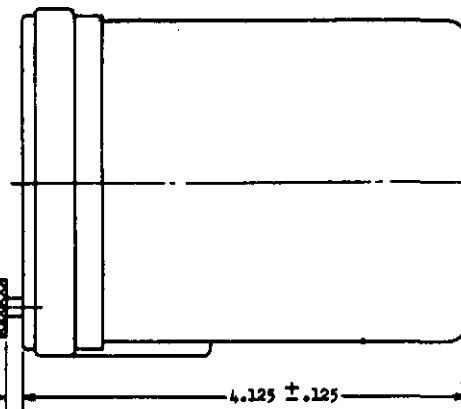
CASE IN ACCORDANCE WITH MS33549 EXCEPT AS SHOWN

DIALS AND POINTER SHOWN FOR REFERENCE ONLY. SEE PROCUREMENT SPECIFICATION FOR DETAIL REQUIREMENTS

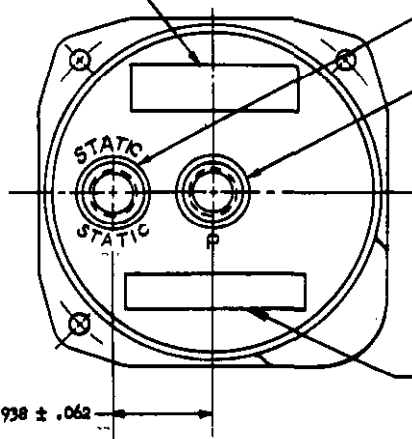
FED. SUP CLASS
6610



SEE MS33549
LONG KNOB TYPE
FOR DETAILS



NAME PLATE



STATIC INSERT
SEE BOSS COLUMN

PRESSURE INSERT
CENTERED WITHIN .062
SEE BOSS COLUMN

LABEL "USE STRAIGHT THREAD FITTINGS ONLY"
"CAUTION: DO NOT ELONG IN TUBES"

.938 ± .062

REAR VIEW

DIMENSIONS IN INCHES.

MS PART NO.	TUBING - O. D.	BOSS	GASKET
MS28090-1	PITOT 1/4 STATIC 1/4	AND10090-4 AND10050-4	MS28778-4 MS28778-4
MS28090-2	PITOT 1/4 STATIC 3/8	AND10090-4 AND10050-6	MS28778-4 MS28778-6

© INACTIVE FOR NEW DESIGN, FOR FUTURE PROCUREMENT USE MS28089-1.

① CANCELLED 2 APRIL 1984 USE MS28089

THIS STANDARD TAKES PRECEDENCE OVER DOCUMENTS REFERENCED HEREIN.
REFERENCED DOCUMENTS SHALL BE OF THE ISSUE IN EFFECT ON DATE OF INVITATIONS FOR BID.

P.A. Other Cust	TITLE INDICATOR, AIRSPEED AND MACH NUMBER, PITOT-STATIC, 80 TO 650 KNOTS	MILITARY STANDARD MS28090 (wep)
PROCUREMENT SPECIFICATION MIL-I-7833 (Wep)	SUPERSEDES	1 OF 1

DD FORM 672-1 (Limited coordination)

PREVIOUS EDITIONS OF THIS FORM ARE OBSOLETE.

APPROVED 27 MAR 1956 REVISED ④ 29 JAN 1969 ⑤ 19 MAY 1968 ⑥ 12 DEC 1966 ⑦ 2 APR 84