

FED. SUP CLASS  
6610

USER SYMBOLS:

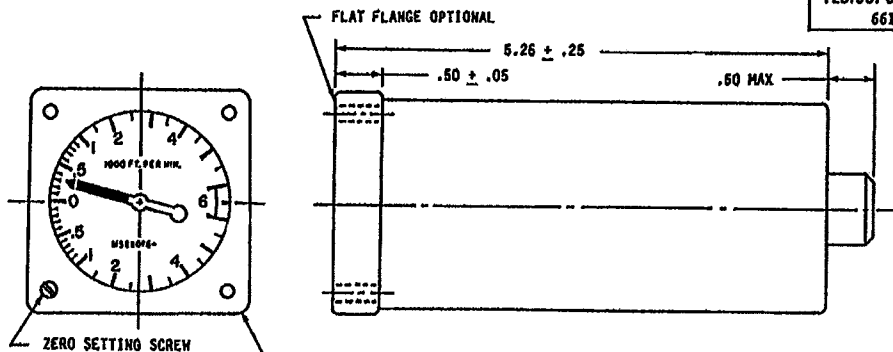
REVIEWER SYMBOLS:

"Review/revise information is current as of the date of this document. For future continuation of changes to this document, direct circulation should be based on the information in the current DODDS."

DISTRIBUTION STATEMENT: APPROVED FOR PUBLIC RELEASE. DISTRIBUTION IS UNLIMITED.

This military standard is approved for use by all Departments & Agencies of the Department of Defense. Selection for all new engineering and design applications and for replacing use shall be based on this document.

AMSC N/A



ZERO SETTING SCREW

DIAL FOR MS28075-1  
MS28075-2  
MS28075-3  
MS28075-4  
MS28075-5

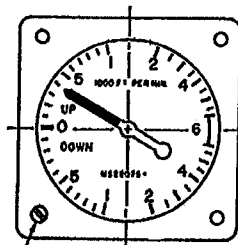
SEE NOTE 3

2-INCH CASE IN ACCORDANCE WITH  
MS33630, EXCEPT AS SHOWN

LOCATION OF MASTER KEYWAY

SEE NOTE 2

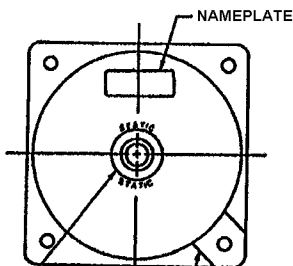
NAMEPLATE



ZERO SETTING SCREW

DIAL FOR MS28075-1 (B)  
MS28075-2 (B)

SEE NOTE 3

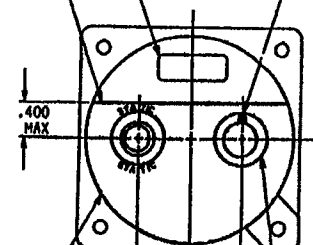


WELL OPTIONAL

STATIC PRESSURE INSERT  
CENTERED WITHIN .250  
(SEE BOSS COLUMN)

REAR VIEW

MS28075-1  
MS28075-1 (B)

.400  
MAX

.750 MIN

STATIC PRESSURE INSERT  
(SEE BOSS COLUMN)

CONNECTOR TO MATE  
WITH MS3116-8-3S (EXCEPT FOR -3)

REAR VIEW

MS28075-2  
MS28075-2 (B)  
MS28075-3 (SEE NOTE 4)  
MS28075-4 (SEE NOTE 5)  
MS28075-5 (SEE NOTE 6)

DASH NO.	BOSS	GASKET	DESCRIPTION	ELECTRICAL CONNECTOR
-1 -1(B)	AND10050-4	MS28778-4	UNLIGHTED	NONE
-2 -2(B)	AND10050-4	MS28778-4	LIGHTED (5 VOLTS AC OR DC, 3 WATT)	A 5V COMMON B 5V AC OR DC (BLU-WHT) C 5V AC OR DC (RED)
-3	AND10050-4	MS28778-4	LIGHTED (5 VOLTS AC OR DC, 3 WATT)	A 5V AC OR DC (RED) B OPEN (NOTE 4) C 5V COMMON
-4	AND10050-4	MS28778-4	LIGHTED (5 VOLTS AC OR DC, 3 WATT)	A 5V COMMON B 5V AC OR DC (IPL-WHT) C 5V AC OR DC (RED)
-5	AND10050-4	MS28778-4	LIGHTED (5 VOLTS AC OR DC, 3 WATT)	A 5V COMMON B 5V AC OR DC (NYIS CLASS B GRN A) C OPEN

(C) REVISED AND REDRAWN

REVISED (C) 9 NOV 1987

APPROVED 24 OCT 86

P.A.  
NAVY - AS  
Other Cust  
ARMY - AV  
AIR FORCE - 11  
NAVY - AS

TITLE

INDICATOR, VERTICAL SPEED, 0-6000 FPM 2-INCH

MILITARY STANDARD

MS 28075

PROCUREMENT SPECIFICATION  
MIL-1-18804

SUPERSEDES:

BUAER DRAWING NO. 55A94AI

SHEET 1 OF 2

DD FORM 1 MAR 72 672-1 (Coordinated)

PREVIOUS EDITIONS OF THIS FORM ARE OBSOLETE.

SYSTEMS ENGINEERING  
AND STANDARDIZATION  
DEPARTMENT, NAVAL AIR  
ENGINEERING CENTER  
LAKELAND, NEW JERSEY 07033

DATE

DRAWN BY

TYPED BY

CHECKED BY

NOTES TO PRINTER: REDUCE BORDER TO 6-27/32-9-3/4. PRINT LEFT  
BORDER LINE ONE INCH FROM LEFT EDGE OF 8x10-1/8 SHEET.  
PRINT BOTTOM BORDER LINE 3/8 INCH FROM BOTTOM EDGE OF 8x10-1/8  
SHEET. SIGNATURE FORM NOT TO BE INCLUDED ON 8x10-1/8 SHEET.

891994

## NOTES:

1. DIMENSIONS IN INCHES.
2. LOCATION OF FITTINGS OPTIONAL IN SHADED AREA EXCEPT A MINIMUM SPACING OF .750 INCH IS REQUIRED.
3. DIAL AND POINTER SHOWN FOR REFERENCE ONLY. SEE PROCUREMENT SPECIFICATION FOR DETAIL REQUIREMENTS.
4. -3 SAME AS GRUMMAN SPECIFICATION CONTROL DWG. 128SCAV-108-1 CONNECTOR MATES WITH AMPHENOL 67-06P12-60S.
5. -4 SAME AS MCDONNELL SPECIFICATION CONTROL DWG. 74J0809056; BACK OF THE MOUNTING FLANGE AND ONE INCH OF THE CASE ARE TIN PLATED.
6. -5 SAME AS -4 EXCEPT FOR LIGHTING.

IN THE EVENT OF A CONFLICT BETWEEN THE TEXT OF THIS STANDARD AND THE REFERENCES CITED HEREIN, THE TEXT OF THIS STANDARD SHALL TAKE PRECEDENCE.

REFERENCED GOVERNMENT (OR NON-GOVERNMENT) DOCUMENTS OF THE ISSUE LISTED IN THAT ISSUE OF THE DEPARTMENT OF DEFENSE INDEX OF SPECIFICATIONS AND STANDARDS (DODISS) SPECIFIED IN THE SOLICITATION FORM A PART OF THIS STANDARD TO THE EXTENT SPECIFIED HEREIN.

<b>P.A.</b> <b>NAVY - AS</b> <b>Other Cust</b> ARMY - AV AIR FORCE - 11 NAVY - AS	<b>TITLE</b>  INDICATOR, VERTICAL SPEED, 0-6000 FPM 2-INCH	<b>MILITARY STANDARD</b>  <b>MS28075</b>
<b>PROCUREMENT SPECIFICATION</b> MIL-I-18804	<b>SUPERSEDES:</b>	<b>SHEET</b> 2 <b>OF</b> 2

DD FORM 1 MAR 72 672-1 (Coordinated)

PREVIOUS EDITIONS OF THIS FORM ARE OBSOLETE.

 SYSTEMS ENGINEERING  
 AND STANDARDIZATION  
 DEPARTMENT, NAVAL AIR  
 ENGINEERING CENTER  
 LAKEHURST, NEW JERSEY 08733

DATE

DRAWN BY

TYPED BY

CHECKED BY

NOTES TO PRINTER REDUCE BORDER TO 6-27/32±9-3/4. PRINT LEFT  
 BORDER-LINE ONE INCH FROM LEFT EDGE OF 8x10-1/2 SHEET.  
 PRINT BOTTOM BORDER LINE 3/8 INCH FROM BOTTOM EDGE OF 8x10-1/2  
 SHEET. SIGNATURE FORM NOT TO BE INCLUDED ON 8x10-1/2 SHEET.

551004

USE SYMBOLS:

REVIEWED SYMBOLS:

"Review" use information is current as of the date of this document.  
 For future coordination of changes to this document, draft circulation  
 should be based on the information in the current DODISS

DISTRIBUTION STATEMENT A: APPROVED FOR PUBLIC RELEASE. DISTRIBUTION IS UNLIMITED.  
 This document is approved for release by the Department of Defense and the  
 Department of Defense. It is the property of the Department of Defense and is  
 loaned to your organization. It and its contents are not to be distributed outside  
 your organization without the express written approval of the Department of Defense.  
 Engineering and design applications and for regulatory use shall be  
 made from this document.

AMSC N/A

 APPROVED 24 OCT 56  
 REVISED (C) FOR CHANGES SEE SHEET 1 AND 2