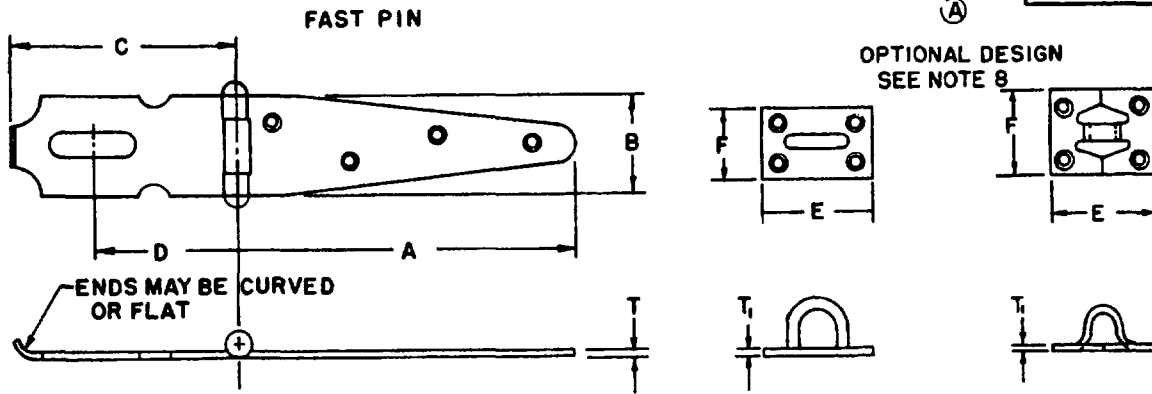


FED SUP CLASS
5340



A	LENGTH CLOSED	3.00	4.50	6.00	8.00	10.00
B	WIDTH AT JOINT	1.12	1.12	1.56	1.87	2.06
C	LENGTH, SLOTTED PART	3.00	3.25	4.00	4.31	5.44
D	CENTER OF PIN TO CENTER OF SLOT	1.72	2.00	2.56	2.81	3.50
T	THICKNESS OF HASP MIN	.062	.074	.084	.096	.104
E	LENGTH OF STAPLE PLATE	1.50	1.50	2.00	2.00	2.75
F	WIDTH OF STAPLE PLATE	1.12	1.12	1.25	1.50	2.00
T ₁	THICKNESS OF STAPLE PLATE MIN	.086	.086	.101	.120	.150
	NUMBER OF HOLES IN HASP	3	4	4	4	4
	NUMBER OF HOLES IN PLATE	4	4	4	4	4
	* SIZE OF SCREWS (REF)	#6 x 3/4	#6 x 3/4	#9 x 7/8	#10 x 1	#10 x 1-1/4
	TYPE	DASH NUMBER	DASH NUMBER	DASH NUMBER	DASH NUMBER	DASH NUMBER
	HASP WITH STAPLE	2	4	6	8	10

NOTES-

1. **MATERIAL** Body and Staple Plate Steel, in accordance with FED. STD. No. 66. Low Carbon. Hot or Cold Rolled.
Pin Brass, in accordance with QQ-B-626, Composition 11, Hard or Corrosion Resisting Steel, in accordance with FED. STD. No. 66, Number 410, 416, 430.
Staple Steel, in accordance with QQ-W-405 Low Carbon.
2. **PROTECTIVE COATING** Zinc Plated in accordance with ASTM-A153, QQ-Z-325, Type II, Class 2; or MIL-C-81562, Type II, Class 2.
3. ***SCREWS** Hasps and staples are furnished with wood screws. The sizes specified are those normally furnished by the manufacturer.
4. **SCREW HOLES** Screw holes shall be countersunk.
5. **TOLERANCE** Slight variation in dimensions to conform to manufacturer's patterns is permissible.
6. **DIMENSIONS** All dimensions are in inches unless otherwise specified.
7. **PART NUMBER** The MS part number consists of the MS number, plus the dash number.
Example MS27969-2.
8. Formed one piece staples may be substituted for two piece wire and plate staples, provided same meets size and minimum metal thickness as specified above.
9. Referenced documents shall be of the issue in effect on date of invitations for bid.
10. For design feature purposes, this standard takes precedence over procurement documents referenced herein.

applications and for repetitive use shall be made from this document.

APPROVED 24 FEB 1961 REVISED 30 OCT 1975

P. A. WC Other Cust YD 82	TITLE HASP, HINGED, OPEN WITH FIXED STAPLE, STEEL	MILITARY STANDARD
		MS27969
PROCUREMENT SPECIFICATION FF-H-111	SUPERSEDES SHAX1, SHBX1, MQL35A	SHEET 1 OF 1