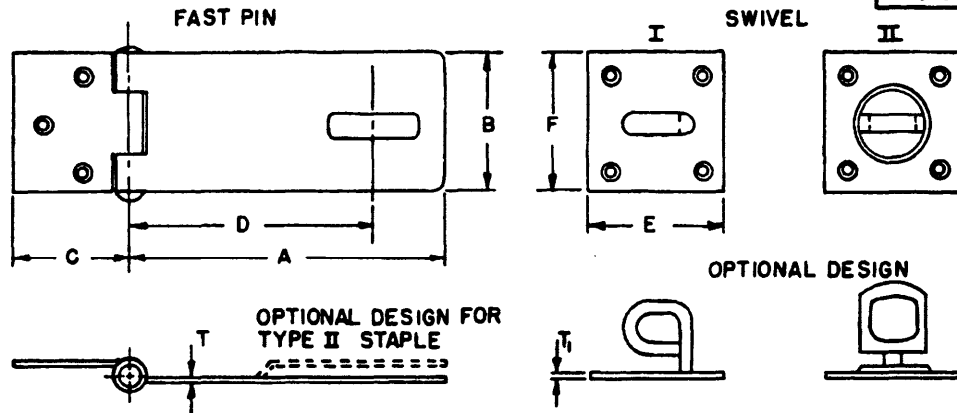


FED. SUP CLASS
5340

REVIEWER: EA, GJS, M, SH,
USER: LAJ, MC, ME, PA, JW



A LENGTH CLOSED	3.50	4.50	6.00
B WIDTH AT JOINT	1.50	1.50	1.87
C LENGTH OF HINGE PART	1.25	2.00	2.75
D CENTER OF PIN TO CENTER OF SLOT	2.37	3.34	4.81
T THICKNESS OF HASP MIN	.074	.086	.104
E LENGTH OF STAPLE PLATE	1.50	1.50	2.00
F WIDTH OF STAPLE PLATE	1.50	1.50	1.50
T ₁ THICKNESS OF STAPLE PLATE MIN	.062	.062	.068
NUMBER OF HOLES IN HASP	3	3	5
NUMBER OF HOLES IN PLATE	4	4	4
*SIZE OF SCREWS (REF)	#7 x 3/4	#7 x 7/8	#9 x 1
TYPE	DASH NUMBER	DASH NUMBER	DASH NUMBER
HASP WITH SWIVEL STAPLE	14	16	18

- NOTES:**
1. **MATERIAL:** Body and Staple Plate: Steel, in accordance with Fed. Std. No. 66, Low Carbon, Hot or Cold Rolled,
Pin: Brass, in accordance with QQ-B-626, Composition 11, Hard, or Steel, Corrosion Resisting, in accordance with Fed. Std. No. 66, Numbers 410, 416, 430.
Staple: Steel, in accordance with QQ-W-405, Low Carbon.
 2. **PROTECTIVE COATING:** Zinc Plated in accordance with ASTM A153; QQ-Z-325, Type II, Class 2; or MIL-C-81562, Type II, Class 2.
 3. ***SCREWS:** Hasps and Staples are furnished with wood screws. The sizes specified are those normally furnished by the manufacturer.
 4. **SCREW HOLES:** Screw Holes shall be countersunk.
 5. **TOLERANCE:** Slight variation in dimensions to conform to manufacturer's patterns is permissible.
 6. **DIMENSIONS:** All dimensions are in inches unless otherwise specified.
 7. **PART NUMBER:** The MS part number consists of the MS number, plus the dash number.
Example: MS27965-14.
 8. Referenced documents shall be of the issue in effect on date of invitations for bid.
 9. For design feature purposes. This standard takes precedence over procurement documents referenced herein.

This military standard is approved for use by all Departments and Agencies of the Department of Defense. Selection for all new engineering and design applications and for repetitive use shall be made from this document.

APPROVED 24 FEB 1961 REVISED 30 OCT 1975

P.A. WC Other Cust YD 82	TITLE HASP, HINGED, SAFETY, WITH SWIVEL STAPLE STEEL	MILITARY STANDARD
		MS27965
PROCUREMENT SPECIFICATION FF-H-111	SUPERSEDES: SHAX3	SHEET 1 OF 1