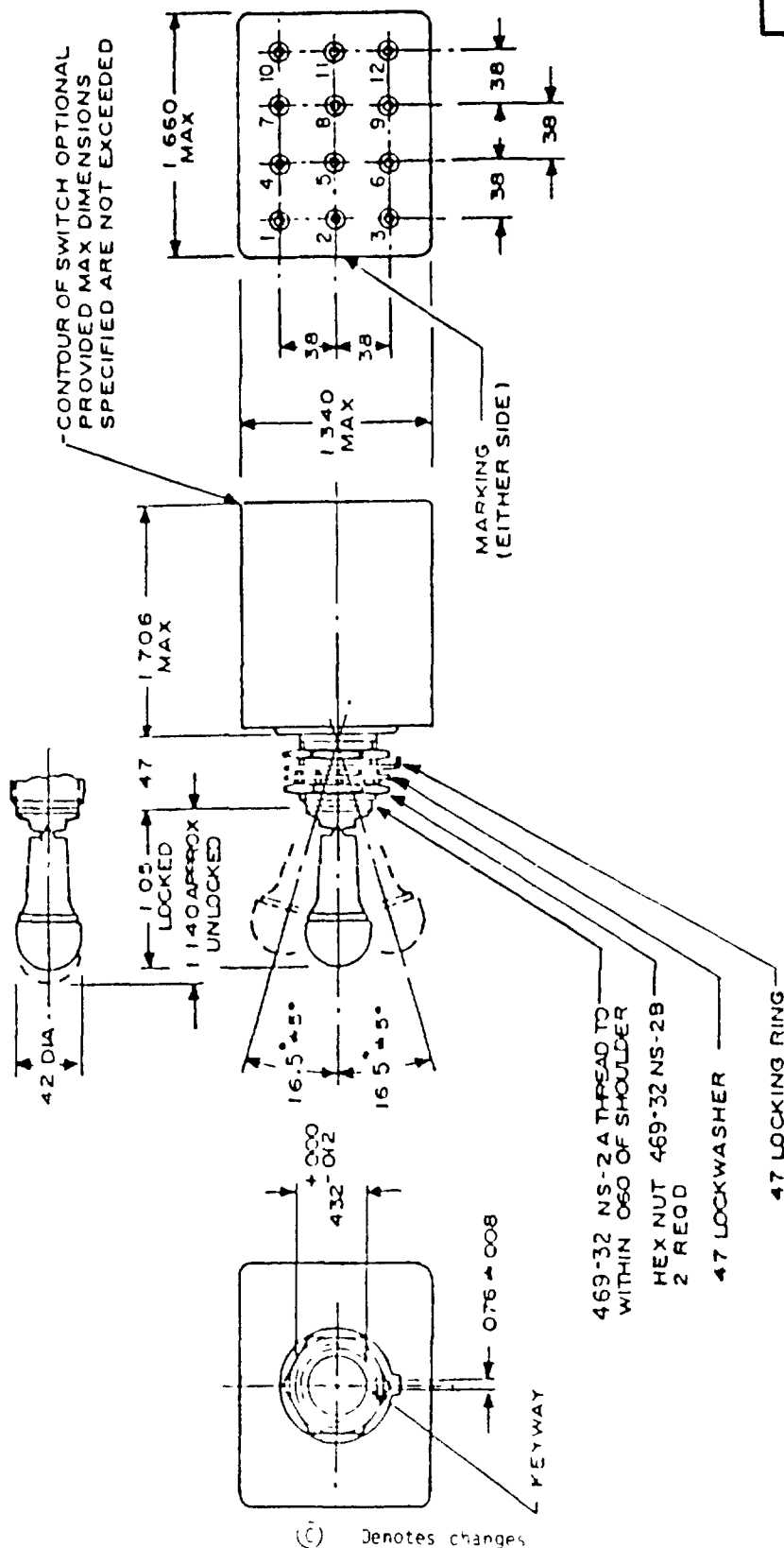


This military standard is approved for use by all Departments and Agencies of the Department of Defense. Section for all new engineering and design applications and for repetitive use shall be made from this document when applicable.



FED SUP CLASS
5930

APPROVED 15 May 1972 REVISED (A) 14 May 1974 (B) 25 Apr 1975 (C) 28 Sep 1987

P.A. Air Force - AF Other Cust Army - DA Navy - NS	International Address	TITLE SWITCH, TOGGLE, FOUR POLE, ENVIRONMENTALLY SEALED, LEVER-LOCK, INTEGRATED WIRE TERMINALS	MILITARY STANDARD MS27789
Functional Specification MIL-S-3950		SUPERSEDES	PAGE 1 OF 4

DD FORM 672

(Coordinated) PREVIOUS EDITIONS OF THIS FORM ARE OBSOLETE

5930-1358-28

DISTRIBUTION STATEMENT A

Approved for public release, distribution is unlimited

FED SUP CLASS
5930

Inches	mm	Inches	mm
.005	0.13	.432	10.97
.008	0.20	.469	11.91
.012	0.30	.47	11.9
.020	0.51	1.05	26.7
.060	1.52	1.140	28.96
.076	1.93	1.340	34.04
.38	9.7	1.660	42.16
.42	10.7	1.706	43.33

NOTES

1. Dimensions are inches.
2. Metric equivalents are given for general information only.
3. Unless otherwise specified, tolerance is $\pm .020$ (0.51 mm) for two place decimals and $\pm .005$ (0.13 mm) for three place decimals.
4. For hardware detail specifications see appendix of MIL-S-3950.
5. Contact installing/removal tool in accordance with M81969/14-02.
6. Grommet sealing plug in accordance with MS27488A20.
7. Sealing grommet shall seal on a smooth wire insulation of .040 (1.02 mm) to .083 (2.11 mm).
8. Terminal shall adequately accept a wire contact within dimensional limits of M39029/1-101.
9. The terminal end of switch shall be color coded red to indicate contact size.
10. Direction of internal mechanism movement is opposite to the direction of the toggle movement.
11. Sealing plugs may be used in nonfunctional grommet holes.
12. Maximum weight is .227 pound.
13. Locking arrangement Positive locking shall be accomplished and shall prevent motion of the toggle lever until the locking mechanism is manually released.
14. The force required to release the locking mechanism shall be 3 to 5 pounds.
15. The locking means at the top of the toggle bushing shall be capable of withstanding a torque of 20 inch-pounds applied in both directions immediately following the humidity test.
16. Part number example MS27789-21A (locking combination 'A').
17. In the event of a conflict between the text of this standard and the reference cited herein, the text of this standard shall take precedence.
18. Referenced Government documents of the issue listed in that issue of the Department of Defense Index of Specifications and Standards (DODISS) specified in the solicitation form a part of this standard to the extent specified herein

P A Air Force - 85 Other Cust Army - ER Navy - AS	International Interest	TITLE SWITCH, TOGGLE, FOUR POLE, ENVIRONMENTALLY SEALED, LEVER-LOCK, INTEGRATED WIRE TERMINALS	MILITARY STANDARD
Procurement Specification MIL-S-3950		SUPERSEDES	MS27789
			PAGE 2 OF 4

Review act vities Army - AV
Navy - EC
Air Force - 99
DLA - ES

User activity Air Force - 11

This military standard is approved for use by all Departments and Agencies of the Department of Defense. See MIL-STD-1316 for all new engineering and design applications and for repetitive use when applicable.

For changes see page 2

REVISED

15 May 1972

APPROVED

User activity Air Force - 11

Review activities
Army - AV
Navy - ER
Air Force - 99
JLA - ES

This military standard is approved for use by all Departments and Agencies of the Department of Defense. Selection for all new engineering and design applications and for repetitive use shall be made from this document when applicable.

Locking combinations

A	LOCKED IN THREE POSITIONS	B	LOCKED IN CENTER AND DOWN POSITIONS (KEYING SIDE)	D	LOCKED OUT OF CENTER POSITION	E	LOCKED IN CENTER POSITION	F	LOCKED IN UP POSITION (OPPOSITE KEYING)	G	LOCKED IN DOWN POSITION (KEYING SIDE)	H	LOCKED OUT OF CENTER AND DOWN POSITION (KEYING SIDE)
J	LOCKED OUT OF CENTER AND UP POSITION (OPPOSITE KEYING)	K	LOCKED IN CENTER (AND UP POSITION (OPPOSITE KEYING))	L	LOCKED OUT OF DOWN POSITION (KEYING SIDE)	M	LOCKED OUT OF AND INTO UP POSITION (OPPOSITE KEYING)	N	LOCKED OUT OF UP POSITION (OPPOSITE KEYING)	P	LOCKED OUT OF AND INTO DOWN POSITION (KEYING SIDE)	FIGURES A THROUGH P DO NOT REPRESENT DETAILS OF CONSTRUCTION. THEY SCHEMATICALLY ILLUSTRATE LOCKING CONFIGURATIONS AND MOMENTARY POSITIONS	

FED SUP CLASS
5930

P A Air Force - 85 Other Cust Army - ER Navy - AS	International interest	TITLE SWITCH, TOGGLE, FOUR POLE, ENVIRONMENTALLY SEALED, LEVER-LOCK, INTEGRATED WIRE TERMINALS	MILITARY STANDARD
Procurement Specification MIL-S-3950		SUPERSEDES	MS27789 PAGE 3 OF 4

This military standard is approved for use by all Departments and Agencies of the Department of Defense. Selection for all new engineering and design applications and for repetitive use shall be made from this document when applicable.

Army - AV
Navy - RC
Air Force - 99
DLA - ES

Review activities

User activity Air Force - 11

Detail requirements		Circuit with toggle lever in		Current capacity (amperes)		Current capacity (amperes)	
MS part number	Available locking combinations	Keying side	Center	Opposite keying side	28 volts dc	115 volts, 60 and 400 hertz ac	
MS27789-1	A11	1-2	4-5	2-3	5-6		
		7-8 On 10-11	7-8 On 11-12	2-3 On 11-12	5-6 On 11-12		
MS27789-2	E, F, K, L, M, N	1-2 Mom.	4-5	2-3	5-6		
		7-8 On 10-11	7-8 On 11-12	2-3 On 11-12	5-6 On 11-12		
MS27789-3	E, L, N	1-2 Mom.	4-5	2-3 Mom.	5-6		
		7-8 On 10-11	7-8 On 11-12	2-3 On 11-12	5-6 On 11-12		
MS27789-21	A11	1-2	4-5	2-3	5-6		
		7-8 On 10-11	7-8 On 11-12	2-3 On 11-12	5-6 On 11-12		
MS27789-22	D, F, G	Off	None	5-6 On 11-12	8-9		
		7-8 On 10-11	7-8 On 11-12	2-3 On 11-12	5-6 On 11-12		
MS27789-23	D, F, G	4-5 On 10-11	None	5-6 On 11-12	8-9		
		7-8 On 10-11	7-8 On 11-12	2-3 On 11-12	5-6 On 11-12		
MS27789-24	E, F, K, M	None	Off	5-6 On 11-12	8-9		
		7-8 On 10-11	7-8 On 11-12	2-3 On 11-12	5-6 On 11-12		
MS27789-25	F	None	Mom. off	5-6 On 11-12	8-9		
		7-8 On 10-11	7-8 On 11-12	2-3 On 11-12	5-6 On 11-12		
MS27789-26	F	4-5 On 10-11	None	5-6 On 11-12	8-9		
		7-8 On 10-11	7-8 On 11-12	2-3 On 11-12	5-6 On 11-12		
MS27789-27	E, L, N	4-5 On 10-11	Off	5-6 On 11-12	8-9		
		7-8 On 10-11	7-8 On 11-12	2-3 On 11-12	5-6 On 11-12		
MS27789-28	E	4-5 On 10-11	Off	None	8-9		
		7-8 On 10-11	7-8 On 11-12	2-3 On 11-12	5-6 On 11-12		
MS27789-29	F	Mom. off	None	5-6 On 11-12	8-9		
		7-8 On 10-11	7-8 On 11-12	2-3 On 11-12	5-6 On 11-12		
MS27789-30	F	4-5 On 10-11	None	Off	8-9		
		7-8 On 10-11	7-8 On 11-12	2-3 On 11-12	5-6 On 11-12		
MS27789-31	E, F, K, L, M, N	1-2 Mom.	4-5	2-3	5-6		
		7-8 On 10-11	7-8 On 11-12	2-3 On 11-12	5-6 On 11-12		
MS27789-32	E	11-2	14-5 On 10-11	5-6 On 11-12	8-9		
		7-8 On 10-11	7-8 On 11-12	2-3 On 11-12	5-6 On 11-12		
MS27789-33	E, F, K, M	11-2	14-5 On 10-11	5-6 On 11-12	8-9		
		7-8 On 10-11	7-8 On 11-12	2-3 On 11-12	5-6 On 11-12		

Test requirements

Test shall be performed in accordance with MIL-S-3950 except

a. During all tests, switches shall be fully wired with appropriate wire and terminal contacts

b. Contact voltage drop - the contact voltage drop with two terminals and the switch contact in series shall not exceed 8 millivolts measured from one wire contact through the contacts to the other wire contacts.

FED SUP CLASS
5930

APPROVED 15 May 1972 REVISED (C) For changes see page 2

MILITARY STANDARD

MS27789

PAGE 4 OF 4