

INCH-POUND

MS27753G

w/Amendment 1

20 May 2010

SUPERSEDING

MS27753G

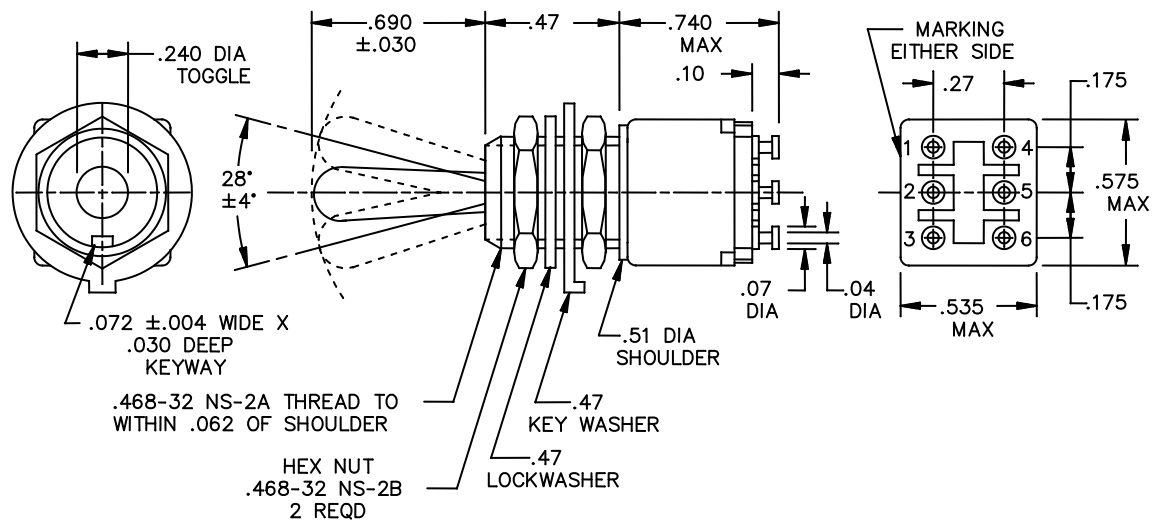
15 March 2010

## DETAIL SPECIFICATION SHEET

## SWITCH, TOGGLE, MINIATURE, DOUBLE POLE, TOGGLE SEAL

This specification is approved for use by all Departments and Agencies of the Department of Defense.

The complete requirements for acquiring the switch described herein shall consist of this specification and the latest issue of MIL-DTL-83731.

FIGURE 1. Dimensions and configurations

MS27753G  
w/Amendment 1

Inches	mm	Inches	mm	Inches	mm
.004	0.10	.090	2.29	.47	11.94
.030	0.76	.10	2.54	.51	12.95
.04	1.02	.175	4.45	.535	13.59
.062	1.57	.27	6.86	.575	14.61
.07	1.78	.428	10.87	.740	18.80
.072	1.83	.469	11.91	1.160	29.46

NOTES:

1. Dimensions are in inches.
2. Metric equivalents are given for general information only.
3. Unless otherwise specified, tolerance is  $\pm .020$  (0.51 mm) for two place decimals and  $\pm .005$  (0.13 mm) for three place decimals.
4. For hardware detail specification, see appendix of MIL-DTL-83731.
5. Configuration of switch case is optional provided maximum dimensions specified are not exceeded.

FIGURE 1. Dimensions and configurations

MS27753G  
w/Amendment 1

REQUIREMENTS:

Test voltage for dielectric withstanding voltage at reduced barometric pressure, shall be 400 V rms minimum.

All switches on this standard are designed so that the movement of the switch mechanism is opposite to that of the toggle lever.

Electric endurance shall be preformed for 30,000 cycles.

Mechanism endurance shall be performed 50,000 cycles at -65° C and then 50,000 cycles at 85°C.

Intermediate current shall be performed for 30,000 cycles.

Terminals shall be molded into the switch case and shall accommodate no. 18 awg wire.

Electrical rating for 28 volts direct current and 115 volts alternating current shall be at 400 Hertz.

Lamp load = 1 ampere, Resistive load = 5 amperes, Inductive load = 2 amperes.

Maximum weight shall be .025 lb.

In the event of a conflict between the text of this standard and the reference cited herein, the text of this standard shall take precedence

Table II Detail Requirements

Canceled MS Part Number <u>1/</u>	Substitute MS part Number <u>1/</u>	Circuits Made with toggle lever In			
		Keying Side 1-2                      4-5	Center Position		Opposite Keying Side 2-3                      5-6
MS27753-1	MS27753-34	On	2-3	On	4-5                      On
MS27753-2	MS27753 -35	Mom-On	2-3	On	4-5                      On
MS27753-3	MS27753-36	Mom-On	2-3	On	4-5                      Mom-On
MS27753-4	MS27753-38	On	1-2	On	5-6                      On
MS27753-5	MS27753-39	Mom-On	1-2	On	5-6                      On
MS27753-6	MS27753-40	Mom-On	1-2	On	5-6                      Mom-On

1/ The canceled part number are no longer procurable; the substitute part numbers have a low dielectric withstanding voltage at reduced barometric pressure

MS27753G  
w/Amendment 1

Referenced documents  
MIL-DTL-83731

The margins of this specification are marked with vertical lines to indicate where modifications from this amendment were made. This was done as a convenience only and the Government assumes no liability whatsoever for any inaccuracies in these notations. Bidders and contractors are cautioned to evaluate the requirements of this document based on the entire content irrespective of the marginal notations.

Custodians  
Army – CR  
Navy – AS  
Air Force – 85  
DLA – CC

Preparing activity:  
DLA – CC

Project (5930-2010-035)

Review activities:  
Army – AV, EA  
Navy – EC  
Air Force – 99

NOTE: The activities listed above were interested in this document as of the date of this document. Since organizations and responsibilities can change, you should verify the currency of the information above using the ASSIST Online database at <https://assist.daps.dla.mil/>.