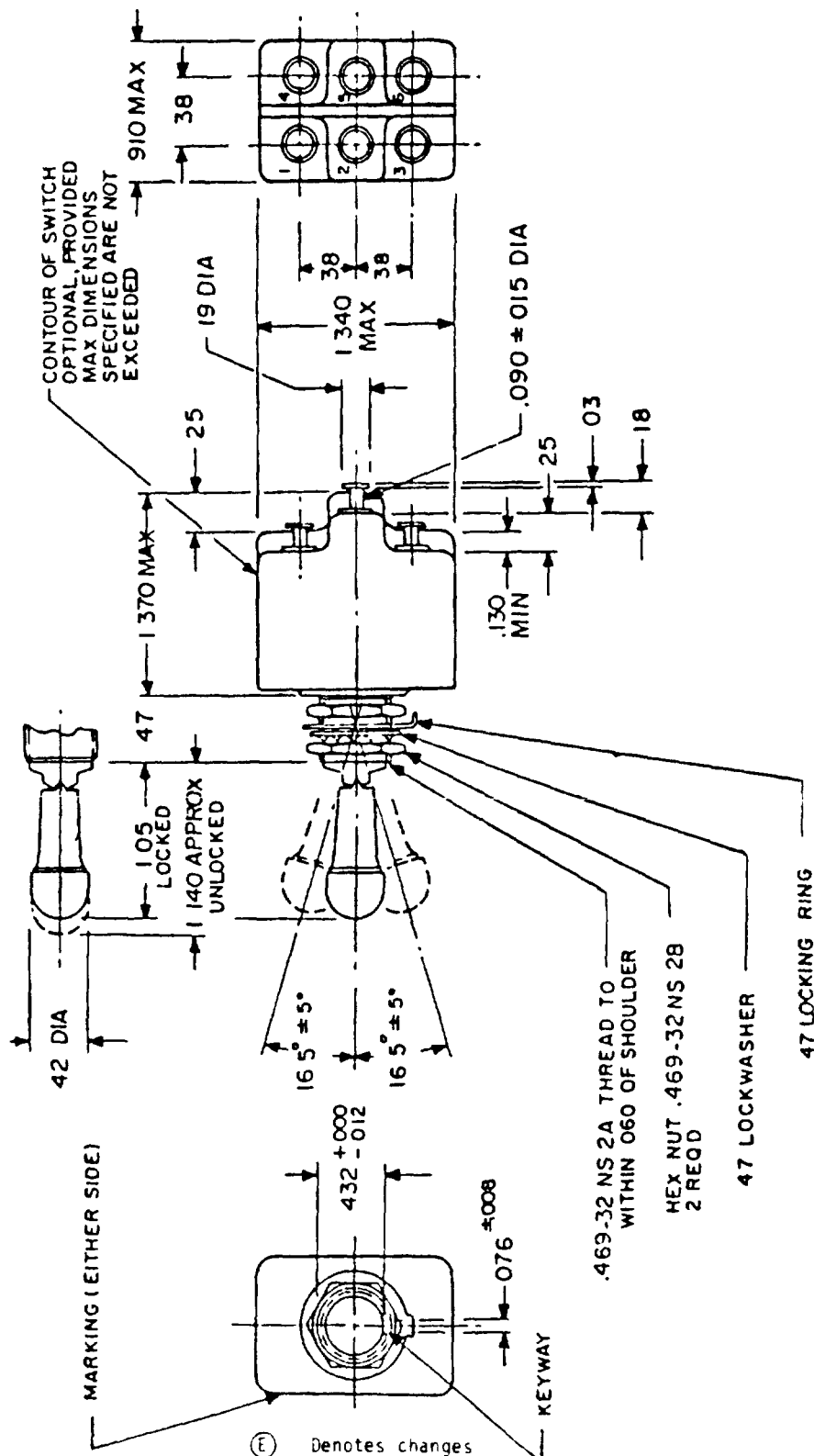


This military standard is approved for use by all Departments and Agencies of the Department of Defense. Selection for all new engineering and design applications and for repetitive use shall be made from this document when applicable.

Review activities
Army - AV
Navy - EC
Air Force - 99
DLA - FS

User activity Air Force - 11



P n Air Force - 85 Other Cust Army - EP Navy - AS	International interest	TITLE SWITCH, TOGGLE, TWO POLE, ENVIRONMENTALLY SEALED, LEVER-LOCK, SOLDER TERMINAL	MILITARY STANDARD
P n MIL-S-3950	SUPERSEDES	MS27738	
P n MIL-S-3950		PAGE 1 OF 4	

DD FORM 1 MAY 73 672
AMSC N/A

(Coordinated) PREVIOUS EDITIONS OF THIS FORM ARE OBSOLETE

DISTRIBUTION STATEMENT A

Approved for public release, distribution is unlimited

5930-1358-18

FED SUP CLASS
5930

APPROVED 15 Sep 1970 REVISED 22 Apr 1971 27 Jun 1972 14 May 1974 25 Apr 1975 28 Sep 1987

FED SUP CLASS
5930

User activity Air Force - 11

Army - AV
Navy - EC
Air Force - 99
CLA - ES

Review activities

This military standard is approved for use by all Departments and Agencies of the Department of Defense. Selection for all new engineering and design applications and for repetitive use shall be made from this document when applicable.

Inches	mm	Inches	mm
.005	0.13	.25	6.4
.008	0.20	.38	9.7
.012	0.30	.42	10.7
.015	0.38	.432	10.97
.020	0.51	.469	11.91
.03	0.8	.47	11.9
.060	1.52	.910	23.11
.076	1.93	1.05	26.67
.090	2.29	1.140	28.96
.130	3.30	1.340	34.04
.18	4.6	1.370	34.80
.19	4.8		

NOTES

1. Dimensions are inches.
2. Metric equivalents are given for general information only.
3. Unless otherwise specified, tolerance is $\pm .020$ (0.51 mm) for two place decimals and $\pm .005$ (0.13 mm) for three place decimals.
4. For hardware detail specifications, see appendix of MIL-S-3950.
5. All switches on this standard are designed so that the movement of the switch mechanism is opposite to that of the toggle lever.
6. Maximum weight is 0.17 pound.
7. Locking arrangement: Positive locking shall be accomplished and shall prevent motion of the toggle lever until the locking mechanism is manually released.
8. The force required to release the locking mechanism shall be 3 to 5 pounds.
9. The locking means at the top of the toggle bushing shall be capable of withstanding a torque of 20 inch-pounds applied in both directions immediately following the humidity test.
10. Part number example, MS27738-21A (locking combination 'A').
11. In the event of a conflict between the text of this standard and the reference cited herein, the text of this standard shall take precedence.
12. Referenced Government documents of the issue listed in that issue of the Department of Defense Index of Specifications and Standards (DODISS) specified in the solicitation form a part of this standard to the extent specified herein.

APPROVED 15 Sep 1979 REVISED 15 Sep 1979 For changes see page 2

P A Air Force - 85	International interest	TITLE SWITCH, TOGGLE, TWO POLE, ENVIRONMENTALLY SEALED, LEVER-LOCK, SOLDER TERMINAL	MILITARY STANDARD
Other Cust Army - ER Navy - AS			MS27738
Procurement Specification MIL-S-3950	SUPERSEDES		PAGE 2 OF 4

User activity Air Force - 11

Review activities Army - AV

This military standard is approved for use by all Departments and Agencies of the Department of Defense. Selection for all new engineering and design applications and for repetitive use shall be made from this document when applicable.

FED SUP CLASS
5930

Locking combinations

A	LOCKED IN THREE POSITIONS (KEYING SIDE)	B	LOCKED IN CENTER AND DOWN POSITIONS (KEYING SIDE)	D	LOCKED OUT OF CENTER POSITION	E	LOCKED IN CENTER POSITION	F	LOCKED IN UP POSITION (OPPOSITE KEYING)	G	LOCKED IN DOWN POSITION (KEYING SIDE)	H	LOCKED OUT OF CENTER AND DOWN POSITION (KEYING SIDE)
J	LOCKED OUT OF CENTER AND UP POSITION (OPPOSITE KEYING)	K	LOCKED IN CENTER AND UP POSITION (OPPOSITE KEYING)	L	LOCKED OUT OF DOWN POSITION (KEYING SIDE)	M	LOCKED OUT OF AND INTO UP POSITION (OPPOSITE KEYING)	N	LOCKED OUT OF UP POSITION (OPPOSITE KEYING)	P	LOCKED OUT OF AND INTO DOWN POSITION (KEYING SIDE)	FIGURES A THROUGH P DO NOT REPRESENT DETAILS OF CONSTRUCTION THEY SCHEMATICALLY ILLUSTRATE LOCKING CONFIGURATIONS AND MOMENTARY POSITIONS	

P A
Air Force - 85
Other Cust
Army - ER
Navy - AS

International
interest

TITLE

SWITCH, TOGGLE, TWO POLE,
ENVIRONMENTALLY SEALED,
LEVER-LOCK, SOLDER TERMINAL

MILITARY STANDARD

MS27738

Procurement Specification
MIL-S-3950

SUPERSEDES

PAGE 3 OF 4

DD FORM 672
1 MAY 73

(Coordinated) PREVIOUS EDITIONS OF THIS FORM ARE OBSOLETE

APPROVED 15 Sep 1970 REVISED (E) for change see page 2

Review activities
 Army - AV
 Navy - FC
 Air Force - 99
 ULA - ES

This military standard is approved for use by all Departments and Agencies of the Department of Defense. Selection for all new engineering and design applications and for repetitive use shall be made from this document when applicable.

User activity Air Force - 11

P A		International interest	TITLE	MILITARY STANDARD		
Air Force - 85 Other Cust Army - ER Navy - AS				MS27738		
Procurement Specification MIL-S-3950			SUPERSEDES	PAGE 4 OF 4		
<div style="text-align: right;">FED SUP CLASS 5930</div>						
Detail requirements						
MS part number	Available locking combinations	Circuit with toggle lever 1r		Current capacity (amperes) 28 volts dc	Current capacity (amperes) 115 volts, 60 and 400 hertz ac	
		Keying side	Center	Lamp-load Resistive circuit	Lamp-load Resistive/Inductive circuit	
MS27738-1	A11	1-2 On 4-5	1-2 On 5-6	2-3 On 5-6	7	15
MS27738-2	E, F, K, L, M, N	Mom.	1-2 On 4-5	1-2 On 5-6	2-3 On 5-6	
MS27738-3	E, L, N	Mom.	1-2 On 4-5	1-2 On 5-6	2-3 On 5-6	8
MS27738-21	A11	1-2 On 4-5	Off	1-2 On 5-6		
MS27738-22	D, F, G	Off	None	1-2 On 5-6	7	15
MS27738-23	D, F, G	1-2 On 4-5	None	2-3 On 5-6		
MS27738-24	E, F, K, M	None	Off	1-2 On 5-6		
MS27738-25	F	None	Mom. off	1-2 On 5-6		
MS27738-26	F	1-2 On 4-5	None	2-3 On 5-6		
MS27738-27	E, L, N	1-2 On 4-5	Off	2-3 On 5-6		
MS27738-28	E	1-2 On 4-5	Off	None	5	11
MS27738-29	F	Mom. off	None	2-3 On 5-6		
MS27738-30	F	1-2 On 4-5	None	Off		
MS27738-31	E, F, K, L, M, N	1-2 On 4-5	Off	2-3 On 5-6		
MS27738-32	E	None	1-2 On 4-5	2-3 On 5-6		
MS27738-33	E, F, K, M	None	1-2 On 4-5	2-3 On 5-6	7	15

APPROVED 15 Sep 1970

REVISED (E)

For changes see page 2