

INCH-POUND

MS27718G

w/Amendment 1

20 May 2010

SUPERSEDING

MS27718G

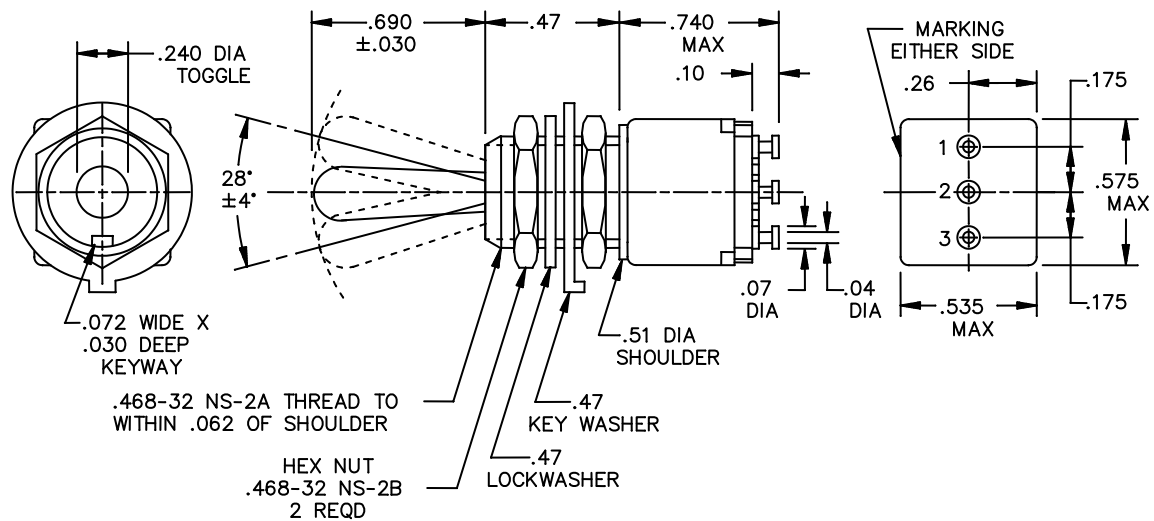
15 March 2010

DETAIL SPECIFICATION SHEET

SWITCH, TOGGLE, MINIATURE SINGLE POLE, TOGGLE SEAL

This specification is approved for use by all Departments and Agencies of the Department of Defense.

The complete requirements for acquiring the switch described herein shall consist of this specification and the latest issue of MIL-DTL-83731.

FIGURE 1. Dimensions and configurations

MS27718G
w/Amendment 1

Inches	mm	Inches	mm
.030	0.76	.26	6.6
.04	1.02	.468	11.89
.062	1.57	.47	11.9
.07	1.78	.51	13.0
.072	1.83	.535	13.59
.10	2.5	.575	14.61
.175	4.45	.690	16.26
.240	6.10	.740	18.80

FIGURE 1. Dimensions and configurations

NOTES:

1. Dimensions are in inches.
2. Metric equivalents are given for general information only.
3. Unless otherwise specified, tolerance is $\pm .020$ (0.51 mm) on two place decimals and $\pm .005$ (0.13 mm) on three place decimals.
4. For hardware detail specification, see supplement of MIL-DTL-83731.
5. Configuration of switch case is optional provided maximum dimensions specified are not exceeded.

FIGURE 1. Dimensions and configurations

MS27718G
w/Amendment 1

REQUIREMENTS:

All switches on this standard are designed so that the movement of the switch mechanism is opposite to that of the toggle lever.

Test voltage for dielectric withstanding voltage at reduced barometric pressure, shall be 400 V rms minimum.

Electrical Endurance shall be performed for 30,000 Cycles.

Mechanical Endurance shall be performed 50,000 cycles at -65°C and then 50,000 cycles at 85°C.

Intermediate current shall be performed for 30,000 cycles.

Terminals shall be molded into the switch case and shall accommodate no. 18 awg wire.

Maximum weight shall be .025 pound.

Electric rating for 28 volts dc and 115 volts ac at 400Hz.

Lamp Load is 1 Ampere.

Resistive load is 5 Amperes.

Inductive Load is 2 Amperes.

In the event of a conflict between the text of this standard and the reference cited herein, the text of this standard and the reference cited herein, the text of this standard shall take precedence.

Table I Detail Requirement

Canceled MS Part NO. <u>1/</u>	Substitute MS Part NO <u>1/</u>	Circuit made with toggle lever in		
		Keying Side 1-2	Center Position	Opposite keying side 2-3
MS27718-21	MS27718-21-1	On	Off	On
MS27718-22	MS27718-22-1	Off	None	On
MS27718-23	MS27718-23-1	On	None	On
MS27718-26	MS27718-26-1	Mom-On	None	On
MS27718-27	MS27718-27-1	Mom-On	Off	Mom-On
MS27718-31	MS27718-31-1	Mom-On	Off	On

1/ The canceled part numbers are no longer procurable; the substitute part numbers have a lower dielectric withstanding voltage at reduced barometric pressure.

MS27718G
w/Amendment 1

Referenced documents
MIL-DTL-83731

The margins of this specification are marked with vertical lines to indicate where modifications from this amendment were made. This was done as a convenience only and the Government assumes no liability whatsoever for any inaccuracies in these notations. Bidders and contractors are cautioned to evaluate the requirements of this document based on the entire content irrespective of the marginal notations.

Custodians:
Army – CR
Navy – EC
Air Force – 85
DLA – CC

Preparing activity:
DLA – CC

Project (5930-2010-034)

Review activities:
Army – AV
Air Force – 99

NOTE: The activities listed above were interested in this document as of the date of this document. Since organizations and responsibilities can change, you should verify the currency of the information above using the ASSIST Online database at <https://assist.daps.dla.mil/>.