

INCH-POUND

NS27708H

27 March 1995

SUPERSEDING

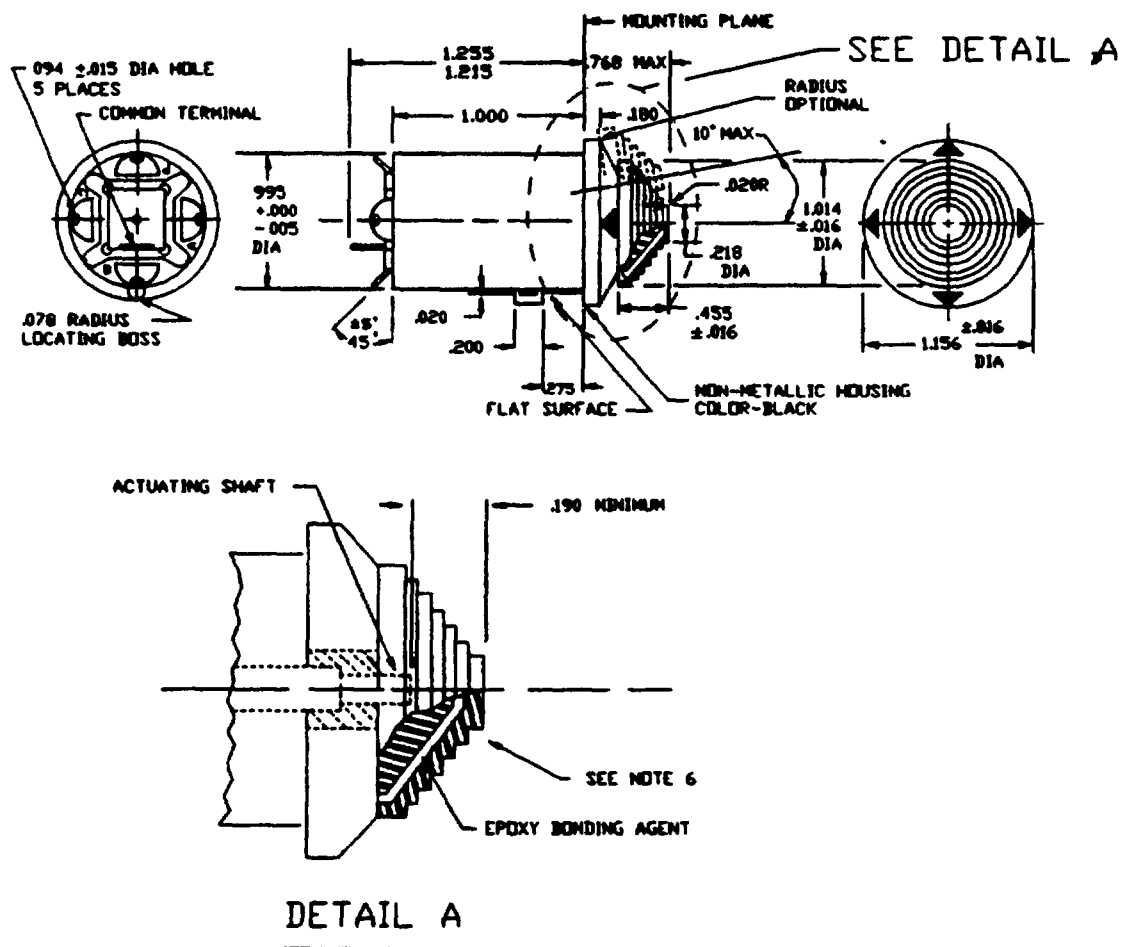
NS27708G

30 December 1988

MILITARY SPECIFICATION SHEET  
SWITCH, TOGGLE, FOUR POSITION ON, CENTER OFF

This specification is approved for use by all Departments  
and Agencies of the Department of Defense.

The requirements for acquiring the product described herein shall consist of  
this specification sheet and the issue of the following specification  
listed in that issue of the Department of Defense Index of Specifications  
and Standards (DODISS) specified in the solicitation: MIL-S-9419.



(H) FIGURE 1. Dimensions and configurations.

(H) denotes changes

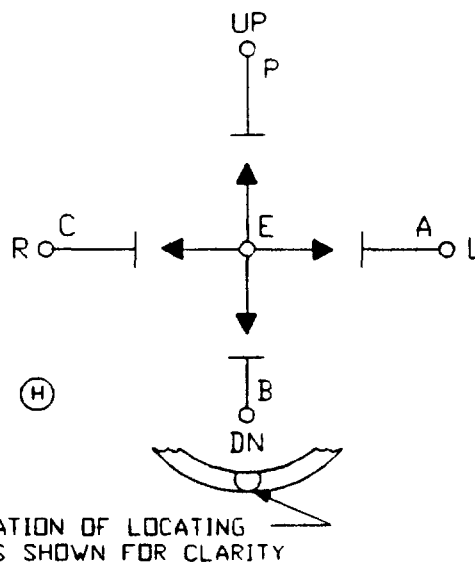
AMSC N/A

1 of 3

FSC 5930

DISTRIBUTION STATEMENT A. Approved for public release; distribution is unlimited.

## MS27708M

Circuit diagram

Arrows indicate contact in the direction of lever travel as viewed from the rear of the switch.

Inches	mm	Inches	mm	Inches	mm
.005	0.13	.180	4.57	.937	23.80
.015	0.38	.200	5.08	.995	25.27
.016	0.41	.218	5.54	1.156	29.36
.020	0.51	.275	6.99	1.215	30.86
.078	1.98	.455	11.56	1.255	31.88
.094	2.39	.688	17.48		

## NOTES:

1. Dimensions are in inches.
2. Metric equivalents are given for general information only.
3. Unless otherwise specified, tolerance is  $\pm 0.010$  (0.25 mm).
4. Terminal end of switch shall have no external moving parts and shall have barriers between terminals.
5. Terminal length optional but must not extend beyond common terminal or diameter of switch.
6. The design of the button & shaft on MS27708-4 shall provide for absolute protection from electrical shock from live shaft and attaching screw. A button shield of insulating material may be utilized for this purpose, as shown in figure 1. Other button and shaft designs may be used to assure this protection, however, all such designs must have prior approval from the qualifying activity. The use of epoxy adhesive alone as an electrical insulation material is not permitted.

FIGURE 1. Dimensions and configurations - Continued.

MS27708H

REQUIREMENTS:

Design and configuration: See figure 1.

Material:

Actuating caps: Actuating caps shall be polycarbonate in accordance with ASTM D3935, color-black.

Marking:

Terminal identification letters shall be molded or engraved adjacent to designated terminal and must be permanent, legible, and clearly visible.

Arrows on top surface of housing shall indicate the direction of travel. They shall be depressed and white filled.

(H) Electrical endurance:

Inductive loads:

MS27708-4:

115 V ac, 400 Hz:

5 amperes, 250,000 cycles.

28 V dc:

20 amperes, 150,000 cycles.

5 amperes, 250,000 cycles.

(H) Part or Identifying Number (PIN): MS27708-4

Supersession data: MS27708-1, MS27708-2 and MS27708-3 are canceled and superseded by MS27708-4.

CONCLUDING MATERIAL

Custodian:

Army - AV

Navy - AS

Air Force - 85

Preparing activity:

DLA - ES

(Project 5930-1593)

Review activity:

Air Force - 99