



MS27653B  
w/Amendment 1

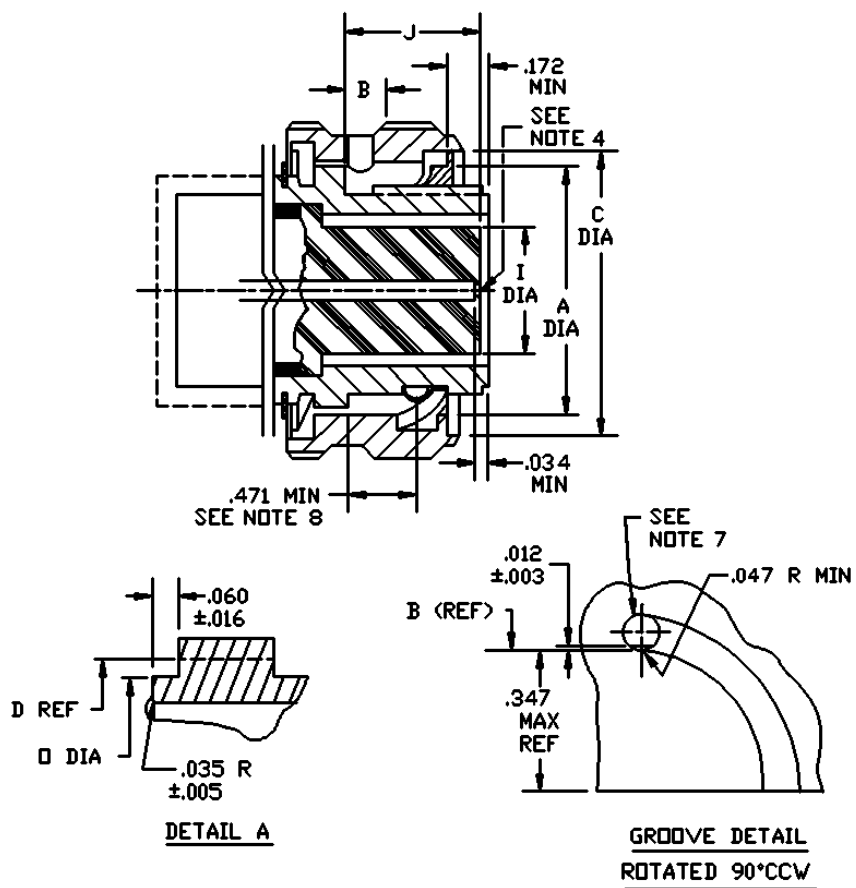


FIGURE 1. Plug, classes E and T – Continued.

MS27653B  
w/Amendment 1

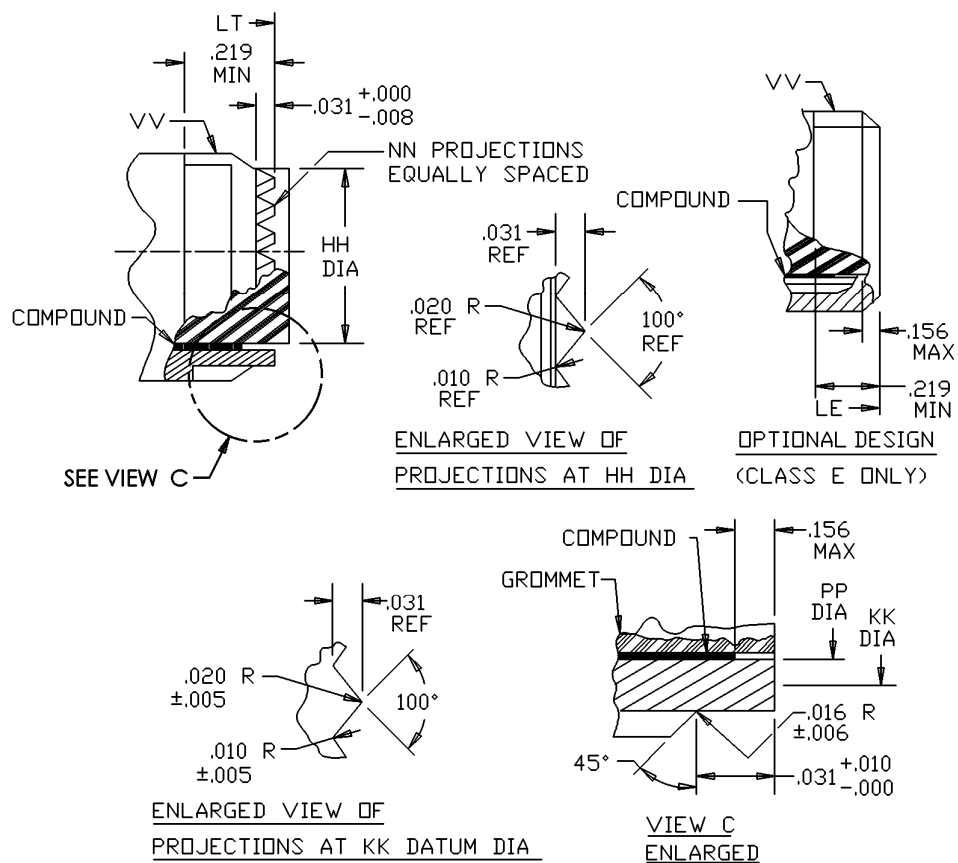


FIGURE 1. Plug, classes E and T – Continued.

MS27653B  
w/Amendment 1

Shell size	A dia +.005 -.001	B $\pm .020$	C dia +.005 -.001	D dia +.001 -.005	D <sup>1</sup> dia min	E dia $\pm .003$	F dia min	I dia max	J +.007 -.003 socket insert	J <sup>1</sup> +.012 -.003 pin insert
9	.580	.113	.684	.437	.417	.315	.447	.290	.575	.019
11	.712		.832	.565	.545	.433	.575	.418		
13	.861		.981	.677	.657	.547	.692	.532		
15	.985		1.106	.802	.782	.672	.817	.657		
17	1.110		1.230	.927	.907	.797	.942	.782		
19	1.217		1.347	1.032	1.012	.886	1.047	.871		
21	1.342		1.462	1.157	1.137	1.011	1.172	.996		
23	1.467		1.587	1.282	1.262	1.136	1.297	1.121		
25	1.592	.152	1.712	1.407	1.387	1.260	1.442	1.246		

Shell size	N dia +.005 -.006	Q dia max	S dia +.001 -.010	W +.011 -.006	X +.016 -.001	AA +.005 -.006	For insert arrangement see MIL-STD-1560
9	.674	.859	.482	.693	.090	.068	
11	.822	.984	.610	.682			
13	.972	1.156	.759	.693			
15	1.097	1.281	.884				
17	1.222	1.406	1.009				
19	1.329	1.516	1.114				
21	1.454	1.641	1.239				
23	1.579	1.766	1.364				
25	1.704	1.891	1.489	.794	.137	.047	

FIGURE 1. Plug, classes E and T – Continued.

MS27653B  
w/Amendment 1

Shell size	HH dia +.000 -.005	KK DATUM dia	NN	PP dia ± .003	LE max overall length	LT max overall length	VV Thread class 2A (plated)
9	.387	.366	12	.344	1.234	1.234	7/16-28
11	.515	.487	16	.472			9/16-24
13	.628	.609	20	.586			11/16-24
15	.754	.731	24	.711			13/16-20
17	.879	.853	28	.836			15/16-20
19	.985	.974	32	.942			1 1/16-18
21	1.110	1.097	36	1.067			1 3/16-18
23	1.235	1.218	40	1.192			1 5/16-18
25	1.360	1.340	44	1.317			1 7/16-18

Inches	mm	Inches	mm	Inches	mm	Inches	mm
.001	.025	.010	.254	.035	.889	.204	5.182
.002	.508	.012	.305	.047	1.194	.219	5.563
.003	.077	.016	.406	.052	1.321	.347	8.814
.004	.102	.020	.508	.060	1.524	.391	9.931
.005	.013	.024	.609	.100	2.540	.471	11.963
.006	.152	.031	.787	.156	3.962	.594	15.088
.008	.203	.034	.864	.172	4.369		

NOTES:

1. Dimensions are in inches.
2. Metric equivalents are given for information only.
3. Normal keyway position. For other keyway positions, MIL-DTL-38999.
4. Insert front surface shall be flat within .005 Total Indicator Reading (TIR).
5. Diameters A and N shall be concentric within .008 TIR.
6. Diameters D and I shall be concentric within .015 TIR at Maximum Material Condition (MMC).
7. 3 holes (design optional) equally spaced within .010 shall be provided for visual inspection of lock when mated with receptacle.
8. The point at which the gage pin, having the same basic diameter as the mating contact and a square face, touches socket contact spring.

FIGURE 1. Plug, classes E and T – Continued.

MS27653B  
w/Amendment 1

REQUIREMENTS:

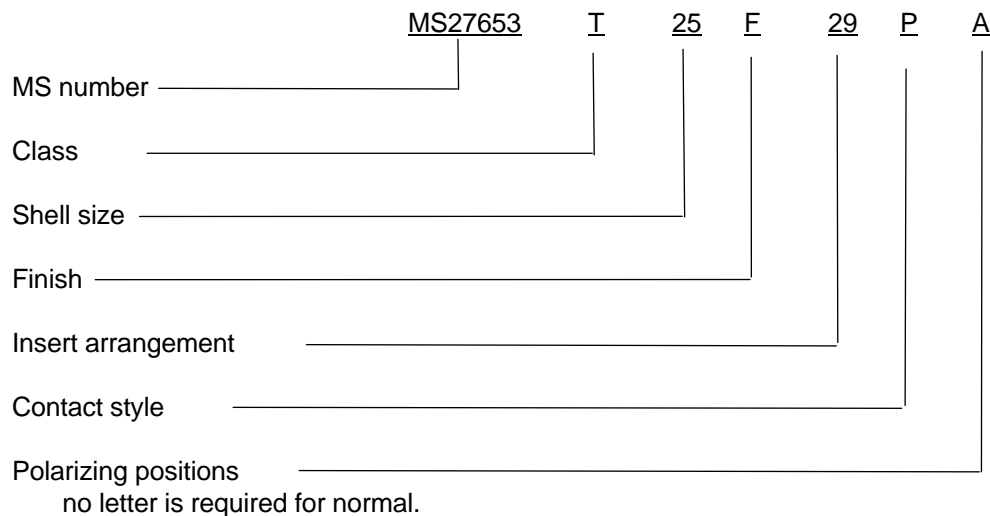
Dimensions and configuration: See figure 1.

Interface dimensions shall conform to MIL-DTL-38999.

Mating connectors: MS27466, MS27468, MS27469, MS27470, MS27471, MS27496, MS27505, MS27515, MS27652, MS27654, MS27656 and MS27662.

Insert arrangements: See MIL-STD-1560.

Part or Identifying Number (PIN) example:



Amendment notations. Marginal notations are not used in this revision to identify changes with respect to the previous issue due to the extent of the changes.

Referenced documents. In addition to MIL-DTL-38999, this document references the following:

MS27466  
MS27467  
MS27468  
MS27469  
MS27470  
MS27471  
MS27496  
MS27505  
MS27515  
MS27652  
MS27654  
MS27656  
MS27662  
MIL-STD-1560

MS27653B  
w/Amendment 1

CONCLUDING MATERIAL

Custodians:

Army - CR  
Navy - AS  
Air Force - 11  
DLA - CC

Preparing activity:

DLA - CC

(Project 5935-2007-169)

Review activities:

Army - AR, MI  
Navy - EC, MC, OS  
Air Force - 19, 99

NOTE: The activities listed above were interested in this document as of this document. Since organizations and responsibilities can change, you should verify the currency of the information above using the ASSIST Online database at <http://assist.daps.dla.mil>.