

INCH-POUND

MS27652B
 W/AMENDMENT 1
 8 February 2008
 SUPERSEDING
 MS27652B
 12 July 2002

DETAIL SPECIFICATION SHEET

CONNECTORS, RECEPTACLE, ELECTRICAL, WALL MOUNTING
 FLANGE, CRIMP TYPE, BAYONET COUPLING, SERIES I

Inactive for new design after 13 August 1974. For new design,
 use MS27466.

This specification is approved for use by all Departments
 and Agencies of the Department of Defense.

The requirements for acquiring the product described herein
 shall consist of this specification sheet and MIL-DTL-38999.

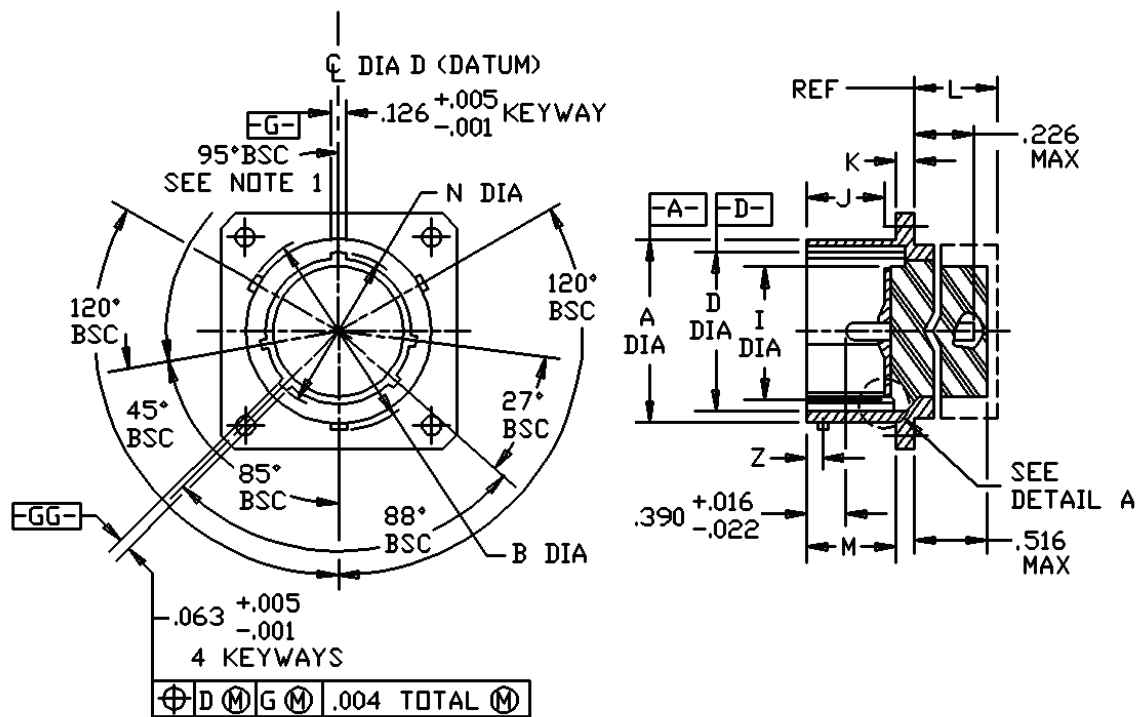


FIGURE 1. Receptacle, classes E and T.

MS27652B
w/Amendment 1

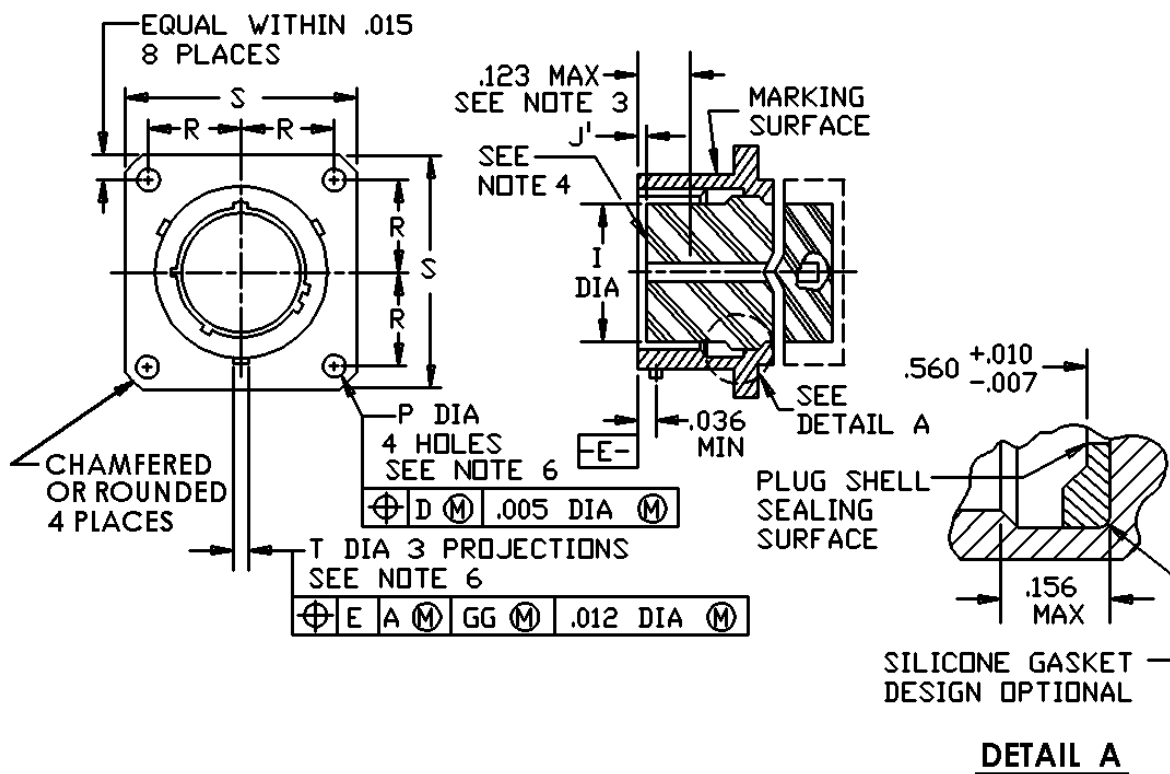


FIGURE 1. Receptacle, classes E and T – Continued.

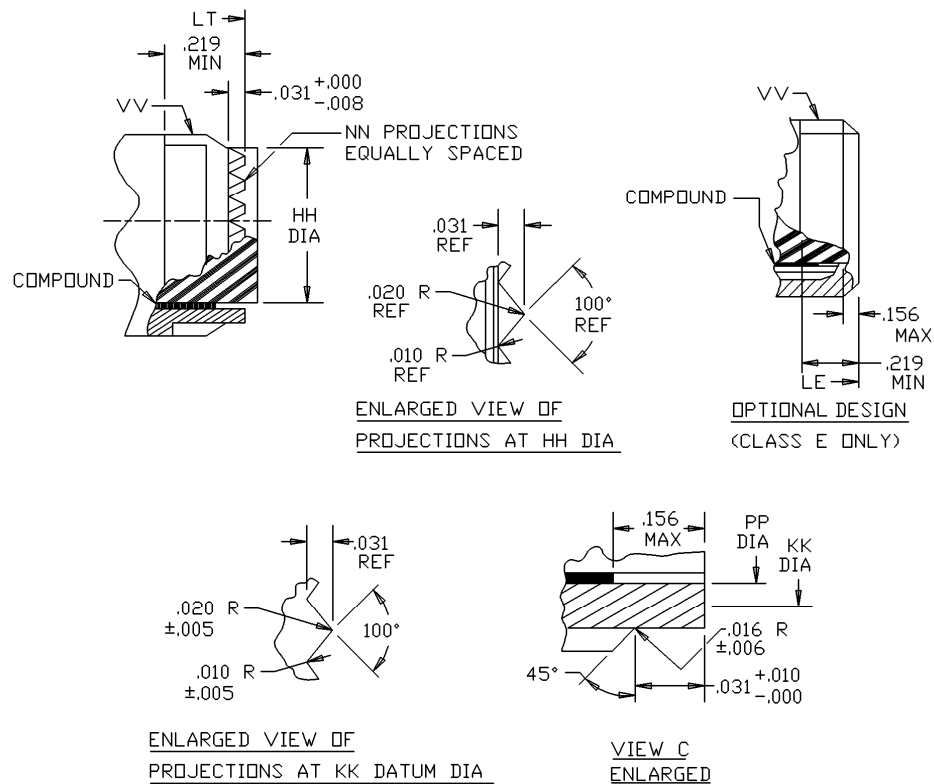
MS27652B
w/Amendment 1

Shell size	A dia +.001 -.005	B dia +.000 -.016	D dia +.005 -.001	I dia max	J +.003 -.010 pin insert	J ¹ +.003 -.010 socket insert	K +.015 -.000	M +.000 -.005
9	.572	.662	.442	.290	.576	.020	.085	.632
11	.700	.810	.570	.418				
13	.850	.960	.687	.532				
15	.975	1.085	.812	.657				
17	1.100	1.210	.937	.782				
19	1.207	1.317	1.042	.871				
21	1.332	1.442	1.167	.996			.115	.602
23	1.457	1.567	1.292	1.121				
25	1.582	1.692	1.417	1.246				

Shell size	N dia +.005 -.006	P dia +.010 -.005	R BSC	S ± .020	T dia +.010 -.005	Z BSC	For insert arrangement see MIL-STD-1560
9	.492	.128	.3595	.938	.078	.100	
11	.620		.406	1.031			
13	.769		.453	1.125			
15	.894		.4845	1.219			
17	1.019		.531	1.312			
19	1.124		.578	1.438			
21	1.249		.625	1.562			
23	1.374	.147	.6875	1.688	.125	.109	
25	1.499		.750	1.812			

FIGURE 1. Receptacle, classes E and T – Continued.

MS27652B
w/Amendment 1



Inches	mm	Inches	mm	Inches	mm	Inches	mm
.001	.025	.010	.254	.031	.787	.219	5.562
.004	.102	.012	.305	.036	.914	.266	6.756
.005	.127	.015	.381	.063	1.600	.390	9.906
.006	.152	.016	.406	.123	3.124	.516	13.106
.007	.178	.020	.508	.126	3.200	.560	14.224
.008	.203	.022	.559	.156	3.962		

FIGURE 1. Receptacle, classes E and T - Continued.

MS27652B
w/Amendment 1

Shell size	HH dia +.001 -.005	KK DATUM dia	NN	PP dia ± .003	LE max length	LT max length	VV Thread class 2A UNEF (plated)
9	.387	.366	12	.344	.531	.531	7/16-28
11	.515	.487	16	.472			9/16-24
13	.628	.609	20	.586			11/16-24
15	.754	.731	24	.711			13/16-20
17	.879	.853	28	.836			15/16-20
19	.985	.974	32	.942			1 1/16-18
21	1.110	1.097	36	1.067			1 3/16-18
23	1.235	1.218	40	1.192			1 5/16-18
25	1.360	1.340	44	1.317			1 7/16-18

NOTES:

1. Dimensions are in inches.
2. Metric equivalents are given for information only.
3. Normal keyway position. For other keyway positions, see MIL-DTL-38999.
4. Insert front surface shall be flat within .005 Total Indicator Reading (TIR).
5. Diameters A and D shall be concentric within .015 TIR.
6. Diameters D and I shall be concentric within .015 TIR at Maximum Material Condition (MMC).
7. Diameter A with respect to diameter B, and diameter D with respect to diameter N shall be concentric at MMC.
8. The gage features for GG shall be .010 smaller than the MMC size at basic location.
9. The point at which the gage pin, having the same basic diameter as the mating contact and a square face, touches socket contact spring.

FIGURE 1. Receptacle, classes E and T - Continued.

MS27652B
w/Amendment 1

REQUIREMENTS:

Dimensions and configuration: See figure 1.
Interface dimensions shall conform to MIL-DTL-38999.
Mating connectors: MS27467, MS27653 and MS27661.
Insert arrangements: See MIL-STD-1560.

Part or Identifying Number (PIN) example:

	<u>MS27652</u>	<u>I</u>	<u>15</u>	<u>F</u>	<u>18</u>	<u>P</u>	<u>A</u>
MS number	_____	_____	_____	_____	_____	_____	_____
Class	_____	_____	_____	_____	_____	_____	_____
Shell size	_____	_____	_____	_____	_____	_____	_____
Finish	_____	_____	_____	_____	_____	_____	_____
Insert arrangement	_____	_____	_____	_____	_____	_____	_____
Contact style	_____	_____	_____	_____	_____	_____	_____
Polarizing positions	_____	_____	_____	_____	_____	_____	_____
no letter is required for normal.							

Amendment notations. Marginal notations are not used in this revision to identify changes with respect to the previous issue due to the extent of the changes.

Referenced documents. In addition to MIL-DTL-38999, this document references the following:

MIL-STD-1560
MS27466
MS27467
MS27653
MS27661

MS27652B
w/Amendment 1

CONCLUDING MATERIAL

Custodians:

Army - CR
Navy - AS
Air Force - 11
DLA - CC

Preparing activity:

DLA - CC

(Project 5935-2007-168)

Review activities:

Army - AR, MI
Navy - EC, MC, OS
Air Force - 19, 99

NOTE: The activities listed above were interested in this document as of this document. Since organizations and responsibilities can change, you should verify the currency of the information above using the ASSIST Online database at <http://assist.daps.dla.mil>.